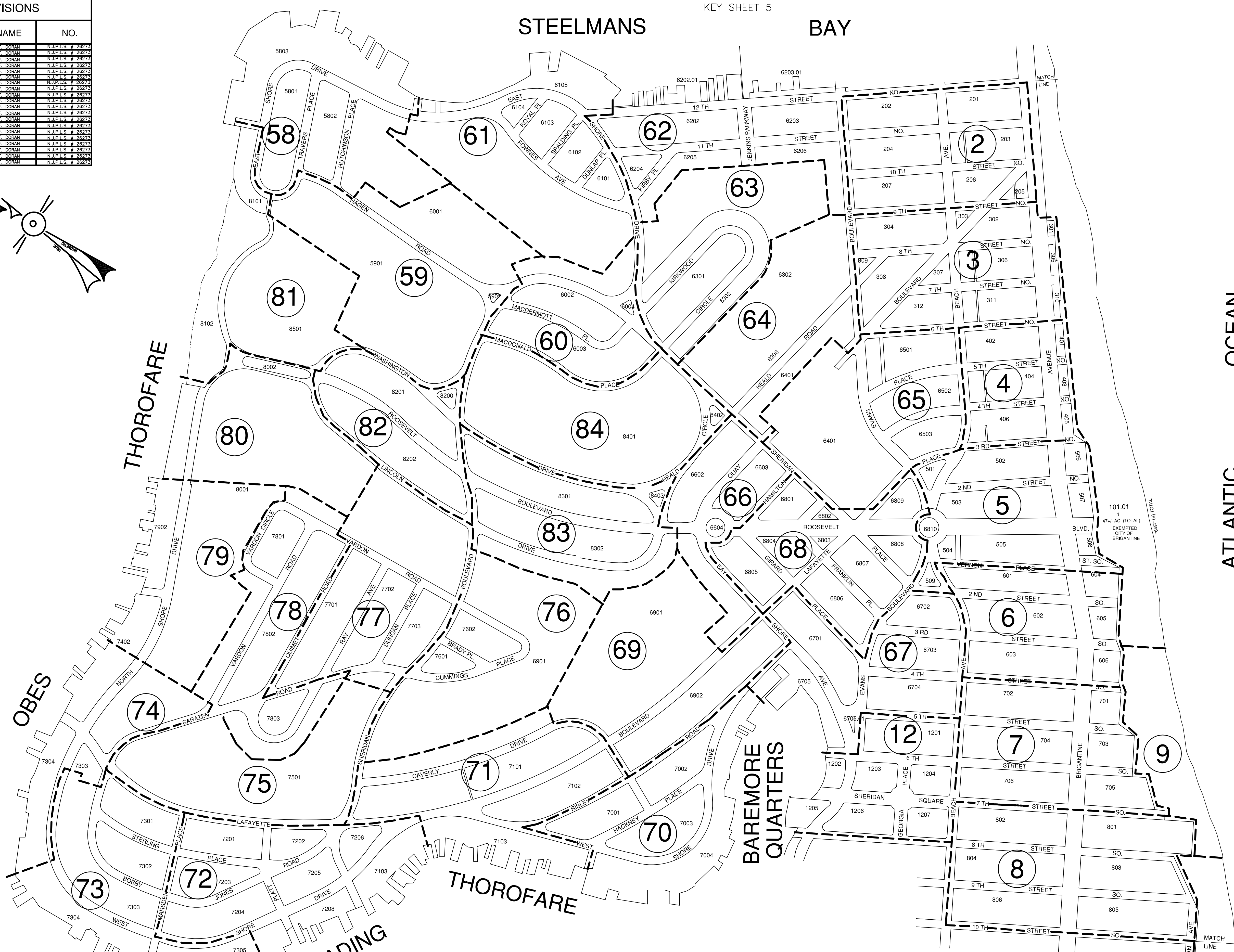
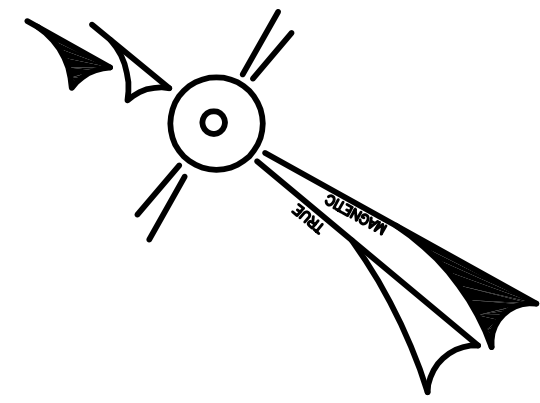


REVISIONS		
DATE	NAME	NO.
JAN 16, 1990	MATTHEW F. DORAN	N.J.P.L.S. # 26273
APR 13, 1991	MATTHEW F. DORAN	N.J.P.L.S. # 26273
SEPT 23, 1993	MATTHEW F. DORAN	N.J.P.L.S. # 26273
MAY 8, 1995	MATTHEW F. DORAN	N.J.P.L.S. # 26273
JUNE 22, 1995	MATTHEW F. DORAN	N.J.P.L.S. # 26273
MAY 27, 1995	MATTHEW F. DORAN	N.J.P.L.S. # 26273
MAY 30, 1997	MATTHEW F. DORAN	N.J.P.L.S. # 26273
DEC 14, 1998	MATTHEW F. DORAN	N.J.P.L.S. # 26273
MAY 3, 1999	MATTHEW F. DORAN	N.J.P.L.S. # 26273
MAY 17, 2000	MATTHEW F. DORAN	N.J.P.L.S. # 26273
OCT 16, 2001	MATTHEW F. DORAN	N.J.P.L.S. # 26273
OCT 04, 2004	MATTHEW F. DORAN	N.J.P.L.S. # 26273
MAY 14, 2005	MATTHEW F. DORAN	N.J.P.L.S. # 26273
MAY 10, 2007	MATTHEW F. DORAN	N.J.P.L.S. # 26273
JUNE 7, 2007	MATTHEW F. DORAN	N.J.P.L.S. # 26273
MAY 4, 2008	MATTHEW F. DORAN	N.J.P.L.S. # 26273
MAR 9, 2009	MATTHEW F. DORAN	N.J.P.L.S. # 26273
JAN 1, 2011	MATTHEW F. DORAN	N.J.P.L.S. # 26273
JAN 1, 2012	MATTHEW F. DORAN	N.J.P.L.S. # 26273
JAN 1, 2018	MATTHEW F. DORAN	N.J.P.L.S. # 26273



THIS SHEET HAS BEEN REDRAWN USING COMPUTER AIDED DRAFTING/DESIGN (CAD/D) BASED ON THE MAP PREPARED BY WILLIAM C. KISSANE, N.J. L.S. NO 17427. THIS SHEET WAS STAMPED ON APRIL 21, 1986 BY THE OFFICIAL NEW JERSEY DIVISION OF TAXATION AND ASSIGNED SERIAL NUMBER 656 SIGNED IVAN HATKOWYCZ. THE ORIGINAL APPROVED MAP IS ON FILE IN THE OFFICE OF DORAN ENGINEERING, MATTHEW F. DORAN P.E., P.L.S. N.J. L.S. NO 26273.

TAX MAP
CITY OF BRIGANTINE
 ATLANTIC COUNTY, NEW JERSEY
 SCALE: 1" = 50' JANUARY 1986
MATTHEW F. DORAN P.E., P.L.S.
 PROFESSIONAL ENGINEER & LAND SURVEYOR
 NEW JERSEY LICENSE NO. 26273
 840 NORTH MAIN STREET
 PLEASANTVILLE NEW JERSEY, 08232
 TO SHOW CONDITIONS AS OF JAN. 1, 2018