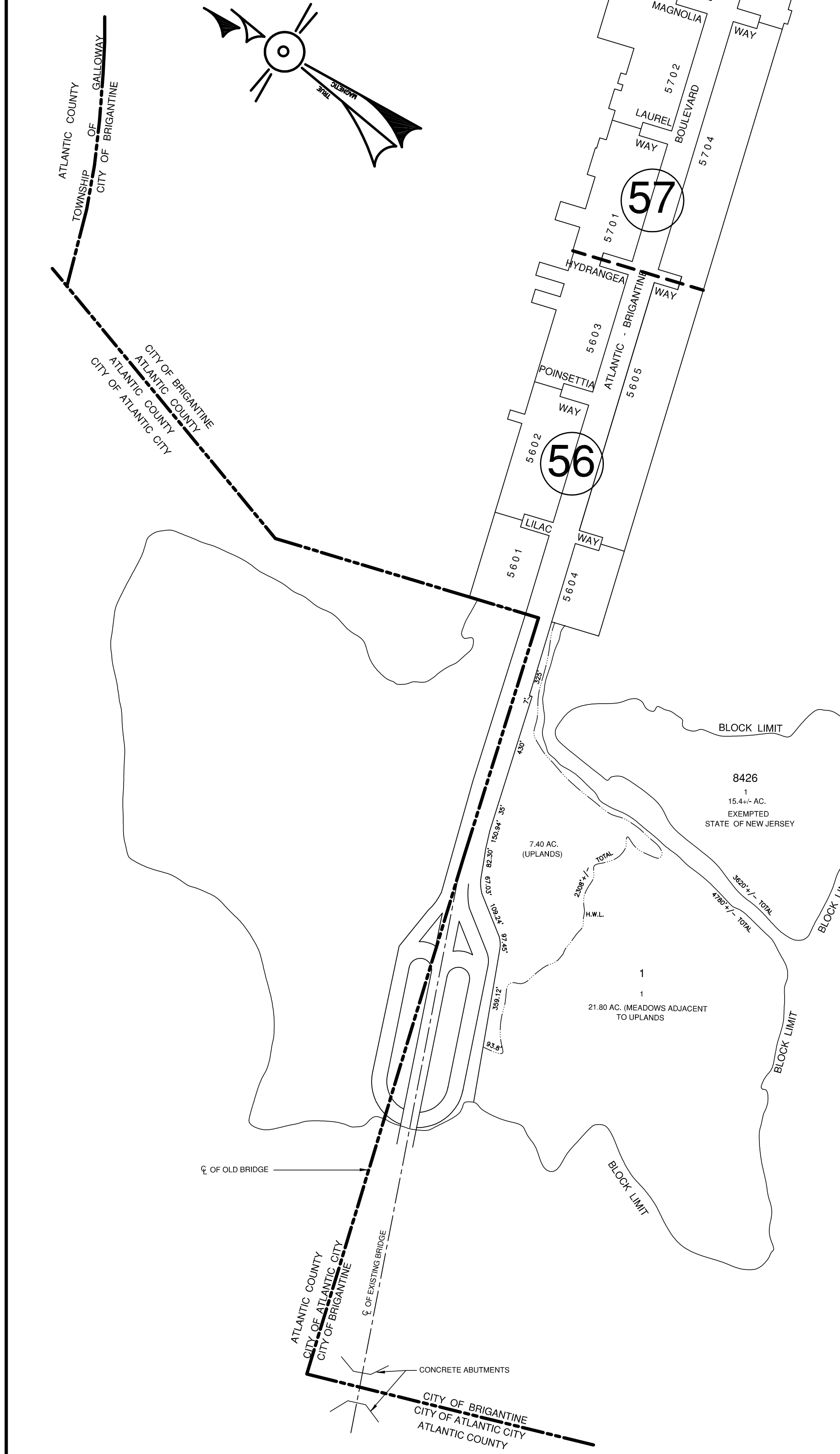
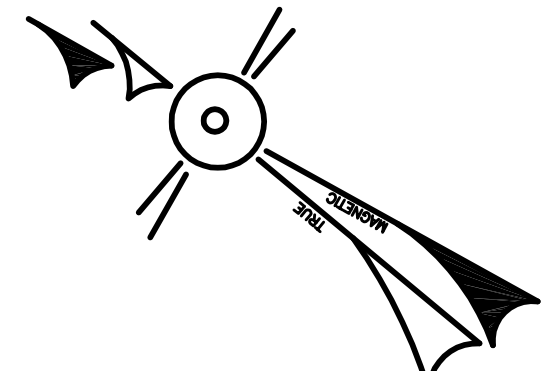
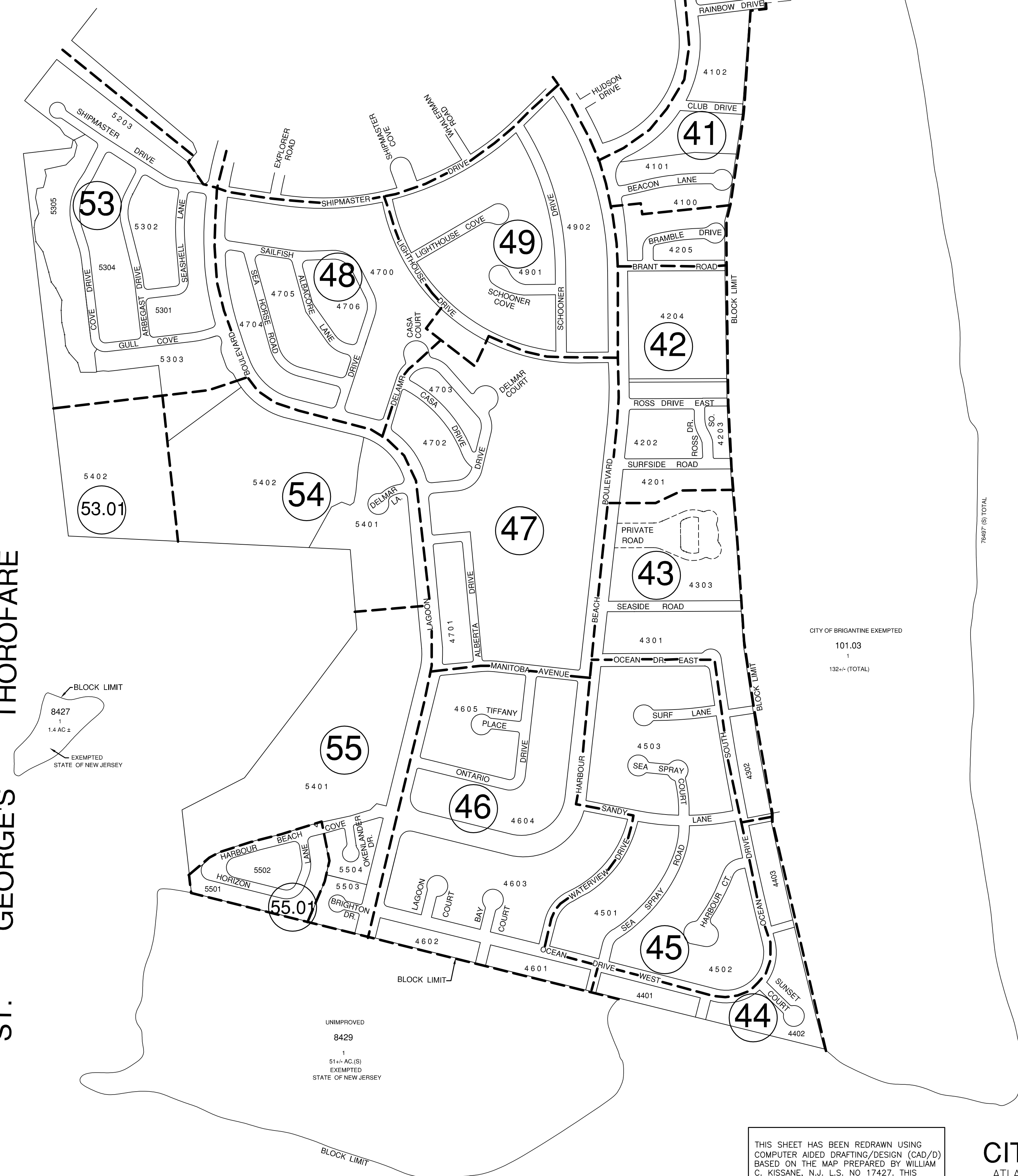


REVISIONS

DATE	NAME	NO.
JAN 16 1990	MATTHEW F. DORAN	N.J.P.L.S. # 26273
APR 13 1991	MATTHEW F. DORAN	N.J.P.L.S. # 26273
SEPT 23 1993	MATTHEW F. DORAN	N.J.P.L.S. # 26273
MAR 8 1995	MATTHEW F. DORAN	N.J.P.L.S. # 26273
JUNE 27 1996	MATTHEW F. DORAN	N.J.P.L.S. # 26273
MAR 27 1998	MATTHEW F. DORAN	N.J.P.L.S. # 26273
SEP 30 1999	MATTHEW F. DORAN	N.J.P.L.S. # 26273
DEC 1 1998	MATTHEW F. DORAN	N.J.P.L.S. # 26273
MAY 3 1999	MATTHEW F. DORAN	N.J.P.L.S. # 26273
SEP 14 2000	MATTHEW F. DORAN	N.J.P.L.S. # 26273
OCT 18 2001	MATTHEW F. DORAN	N.J.P.L.S. # 26273
OCT 04 2004	MATTHEW F. DORAN	N.J.P.L.S. # 26273
FEB 04 2005	MATTHEW F. DORAN	N.J.P.L.S. # 26273
MAY 10 2007	MATTHEW F. DORAN	N.J.P.L.S. # 26273
JUNE 7 2007	MATTHEW F. DORAN	N.J.P.L.S. # 26273
MAY 9 2008	MATTHEW F. DORAN	N.J.P.L.S. # 26273
MAR 9 2009	MATTHEW F. DORAN	N.J.P.L.S. # 26273
JAN 1 2011	MATTHEW F. DORAN	N.J.P.L.S. # 26273
JAN 1 2012	MATTHEW F. DORAN	N.J.P.L.S. # 26273
JAN 1 2018	MATTHEW F. DORAN	N.J.P.L.S. # 26273



ST. GEORGE'S THOROFARE



OCEAN ATLANTIC

CITY OF BRIGANTINE EXEMPTED  
101.03  
1  
192.44 (TOTAL)

UNIMPROVED  
8429  
1  
51.44 AC.(S)  
EXEMPTED  
STATE OF NEW JERSEY

THIS SHEET HAS BEEN REDRAWN USING COMPUTER AIDED DRAFTING/DESIGN (CAD/D) BASED ON THE MAP PREPARED BY WILLIAM C. KISSANE, N.J. L.S. NO 17427. THIS SHEET WAS STAMPED ON APRIL 21, 1986 BY THE OFFICIAL NEW JERSEY DIVISION OF TAXATION AND ASSIGNED SERIAL NUMBER 656 SIGNED IVAN HAFTKOWYCZ. THE ORIGINAL APPROVED MAP IS ON FILE IN THE OFFICE OF DORAN ENGINEERING, MATTHEW F. DORAN P.E., P.L.S. N.J. L.S. NO 26273.

**TAX MAP**  
**CITY OF BRIGANTINE**  
ATLANTIC COUNTY, NEW JERSEY  
SCALE: 1" = 50'  
JANUARY 1986  
**MATTHEW F. DORAN P.E., P.L.S.**  
PROFESSIONAL ENGINEER & LAND SURVEYOR  
NEW JERSEY LICENSE NO. 26273  
840 NORTH MAIN STREET  
PLEASANTVILLE NEW JERSEY, 08232