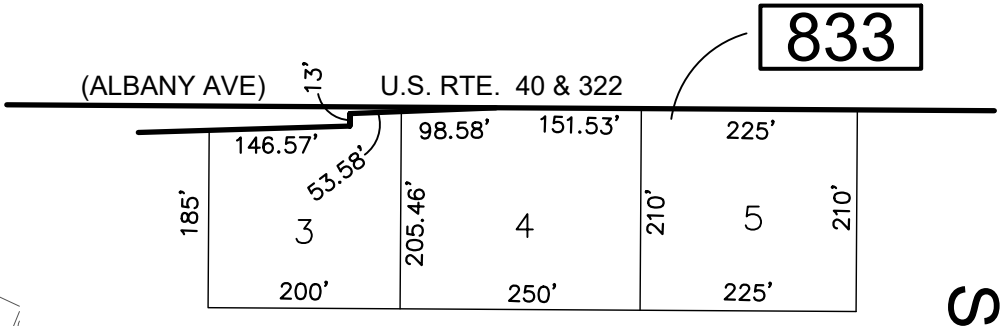
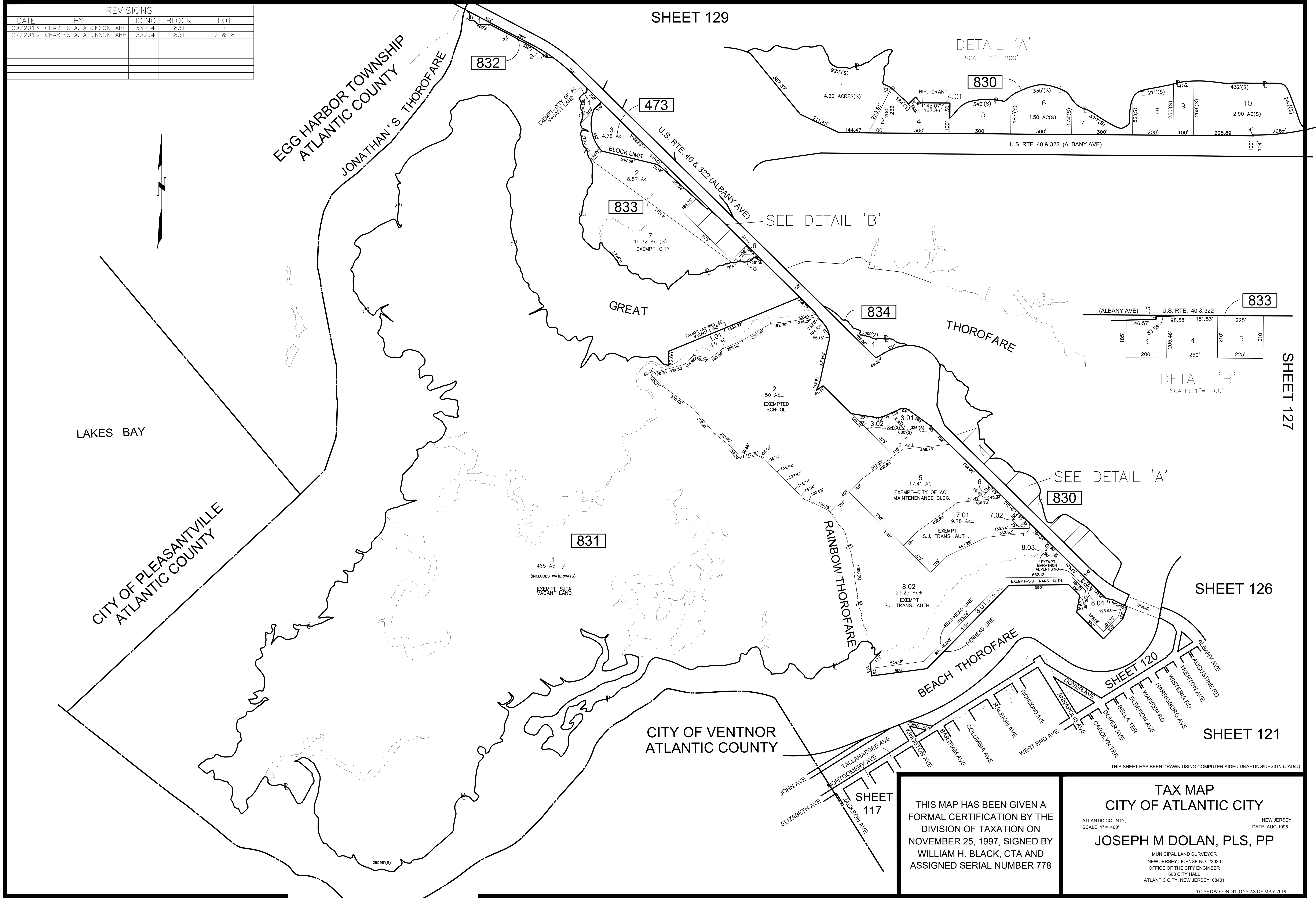


REVISIONS				
DATE	BY	LIC. NO.	BLOCK	LOT
09/2013	CHARLES A. ATKINSON-ARH	33994	831	7
07/2015	CHARLES A. ATKINSON-ARH	33994	831	7 & 8

SHEET 129

DETAIL 'A'
SCALE: 1" = 200'



DETAIL 'B'
SCALE: 1" = 200'

SHEET 126

SHEET 121

THIS MAP HAS BEEN GIVEN A FORMAL CERTIFICATION BY THE DIVISION OF TAXATION ON NOVEMBER 25, 1997, SIGNED BY WILLIAM H. BLACK, CTA AND ASSIGNED SERIAL NUMBER 778

TAX MAP
CITY OF ATLANTIC CITY
 ATLANTIC COUNTY, NEW JERSEY
 SCALE: 1" = 400' DATE: AUG 1995
JOSEPH M DOLAN, PLS, PP
 MUNICIPAL LAND SURVEYOR
 NEW JERSEY LICENSE NO. 23930
 OFFICE OF THE CITY ENGINEER
 603 CITY HALL
 ATLANTIC CITY, NEW JERSEY 08401

THIS SHEET HAS BEEN DRAWN USING COMPUTER AIDED DRAFTING/DESIGN (CADD)

TO SHOW CONDITIONS AS OF MAY 2019

COA# 24GA27973300