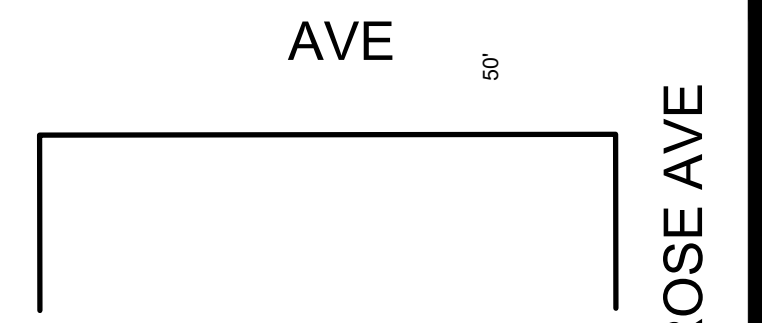
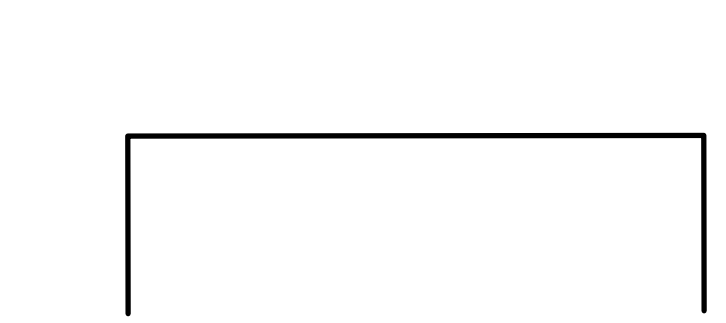
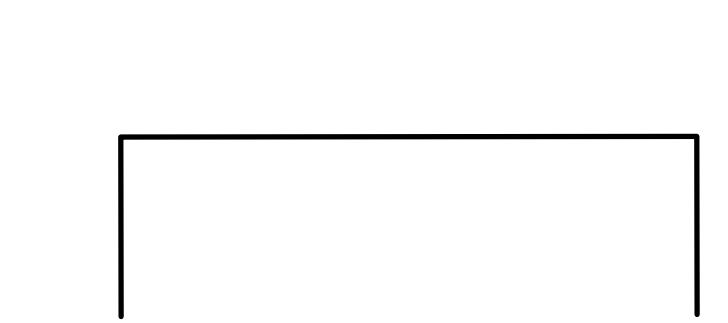
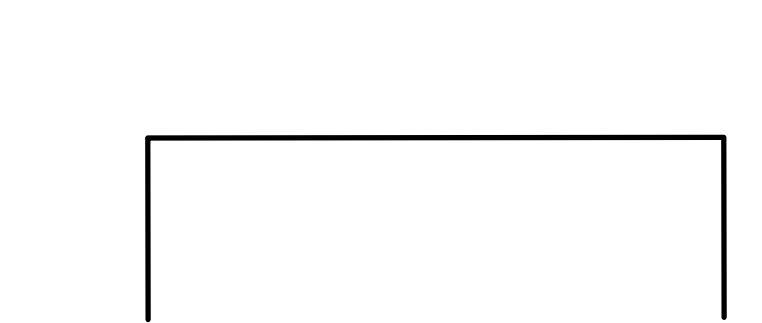
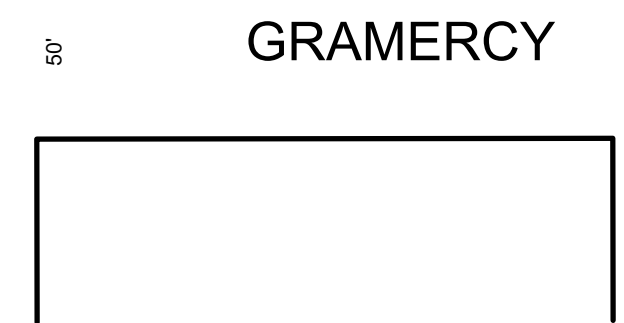
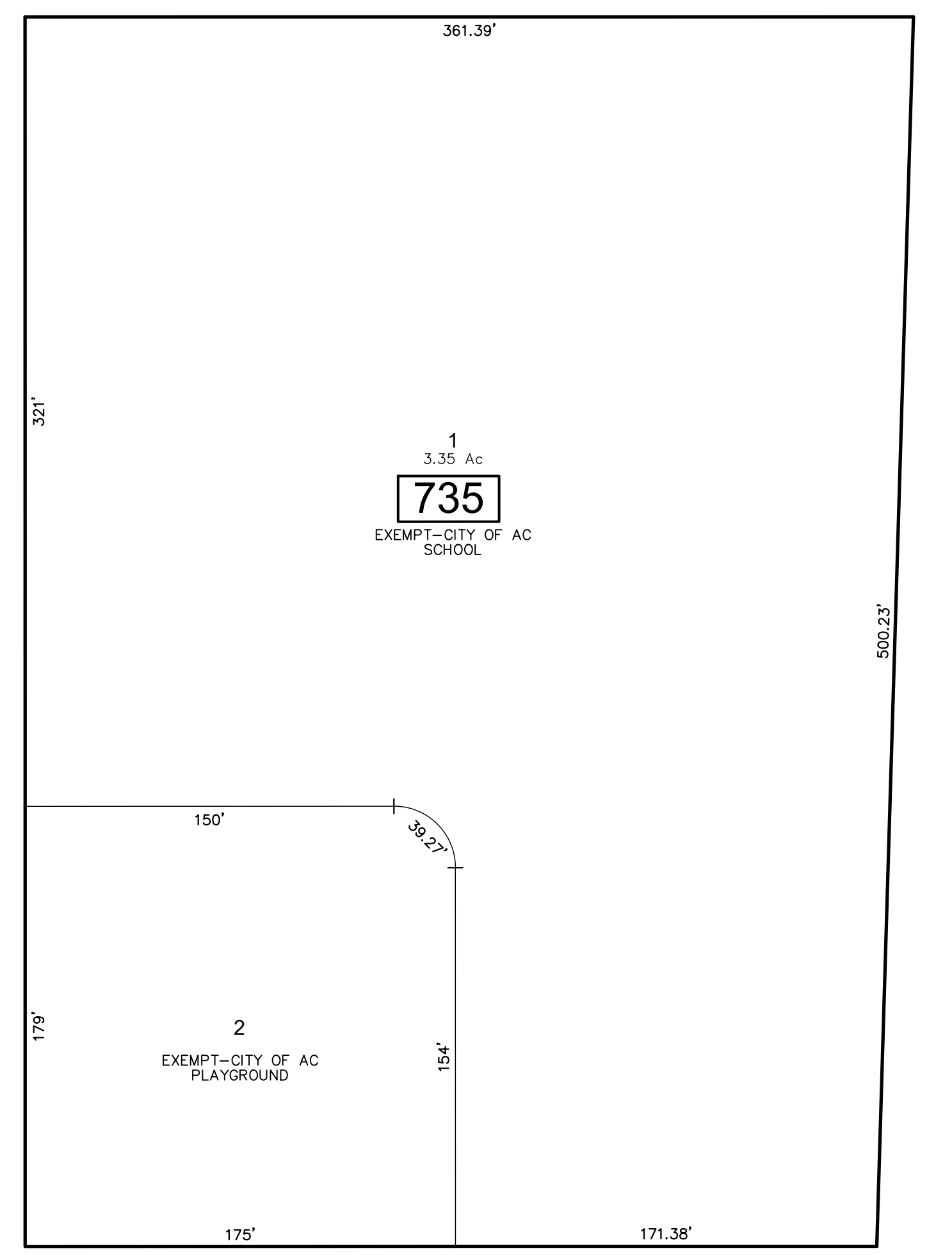
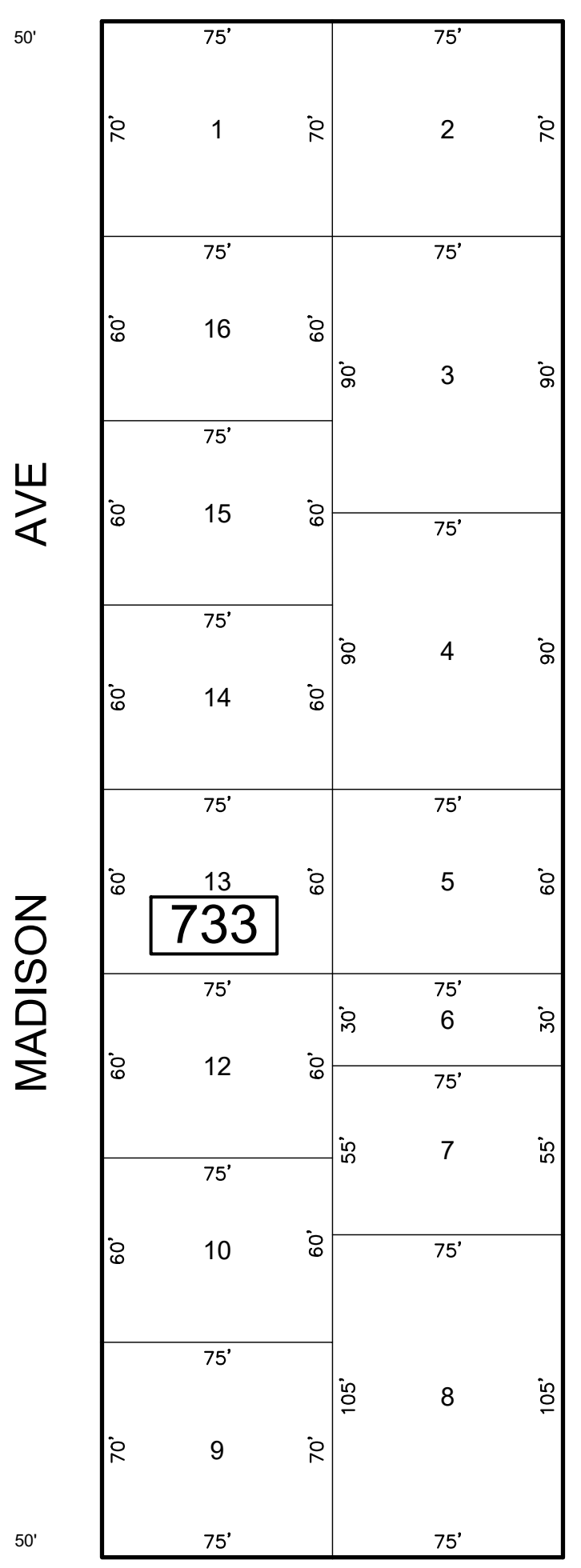
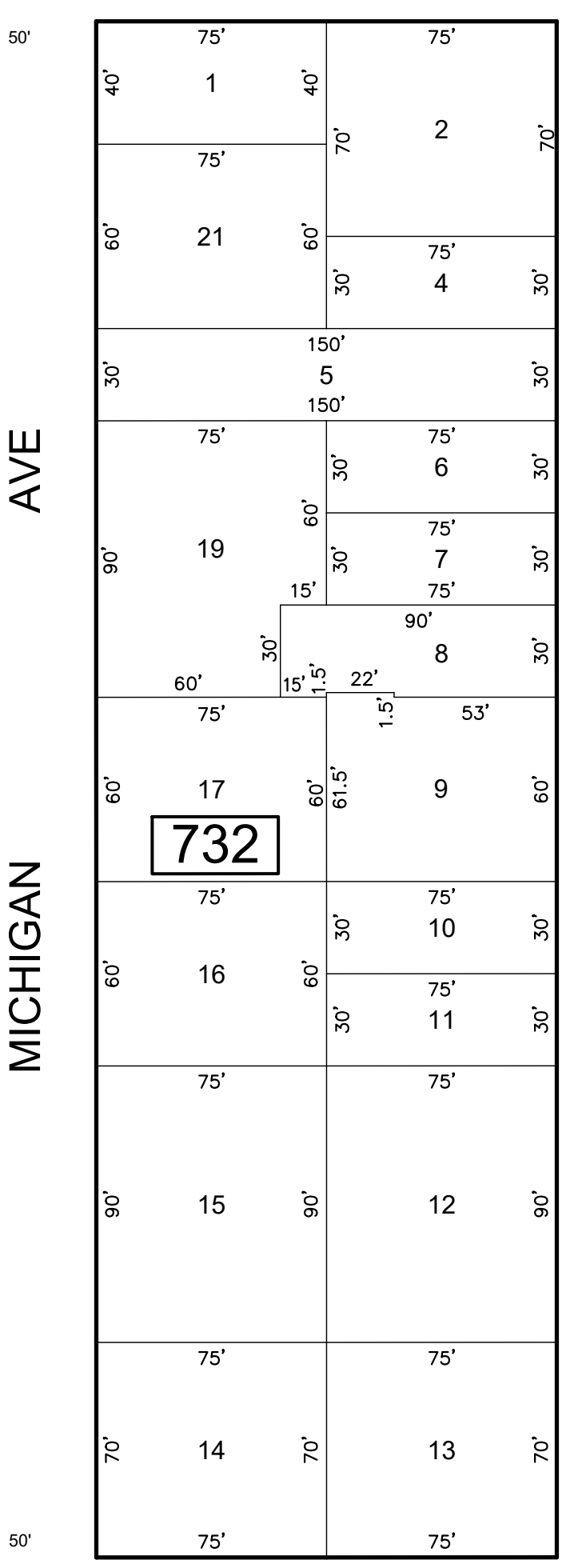
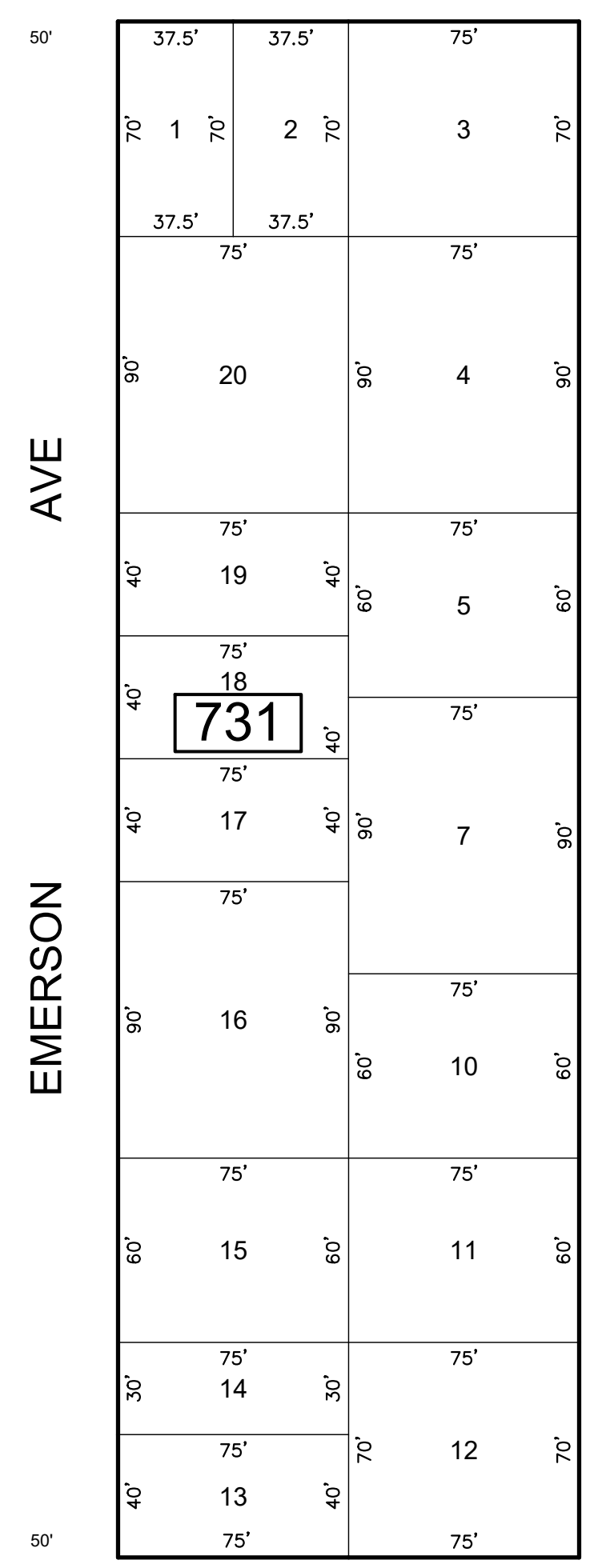
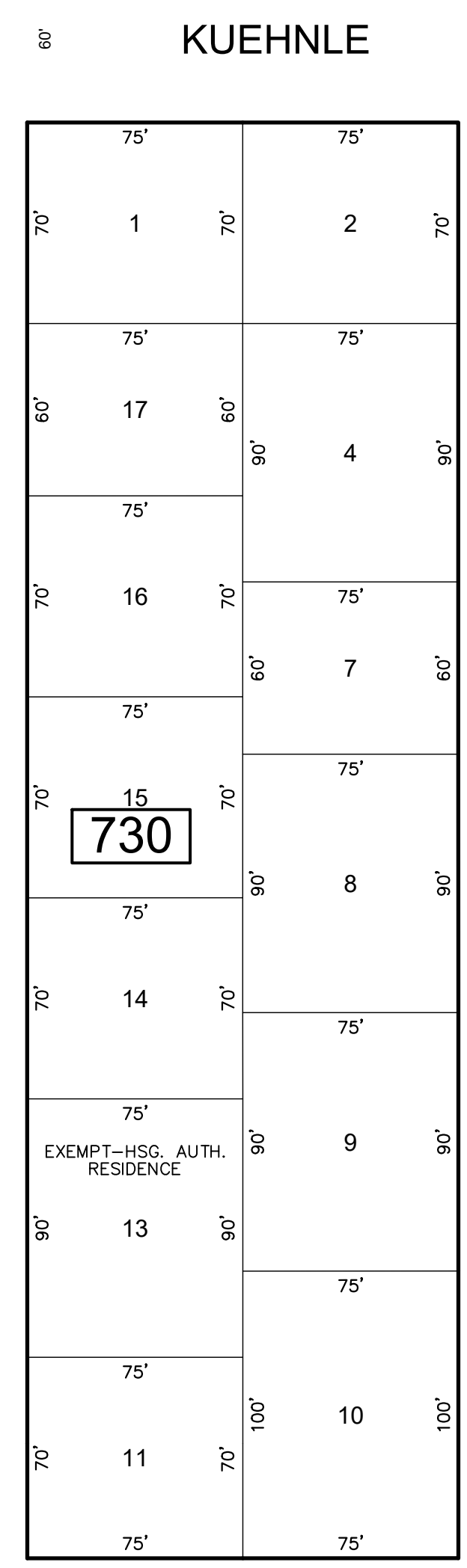
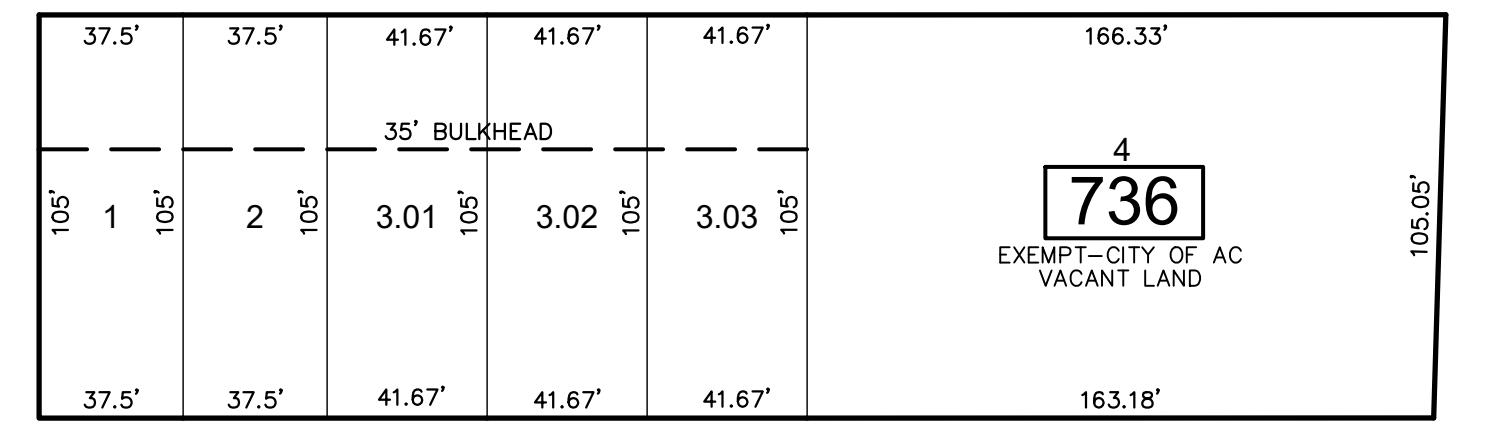
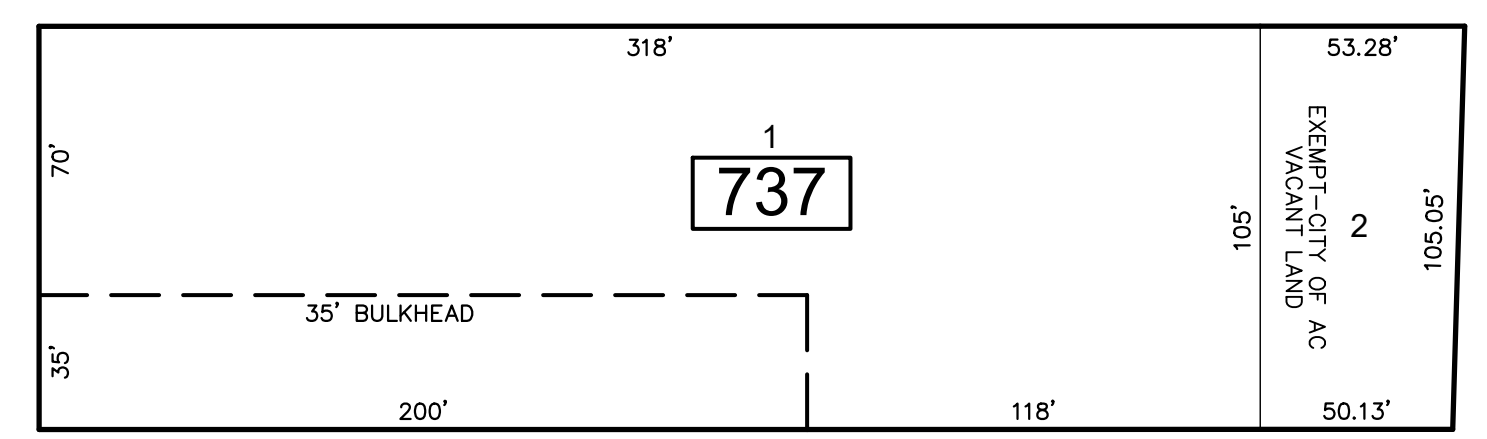
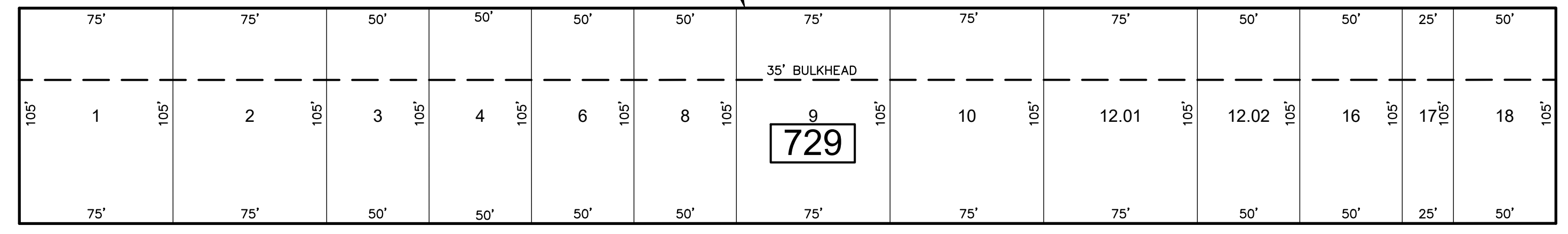
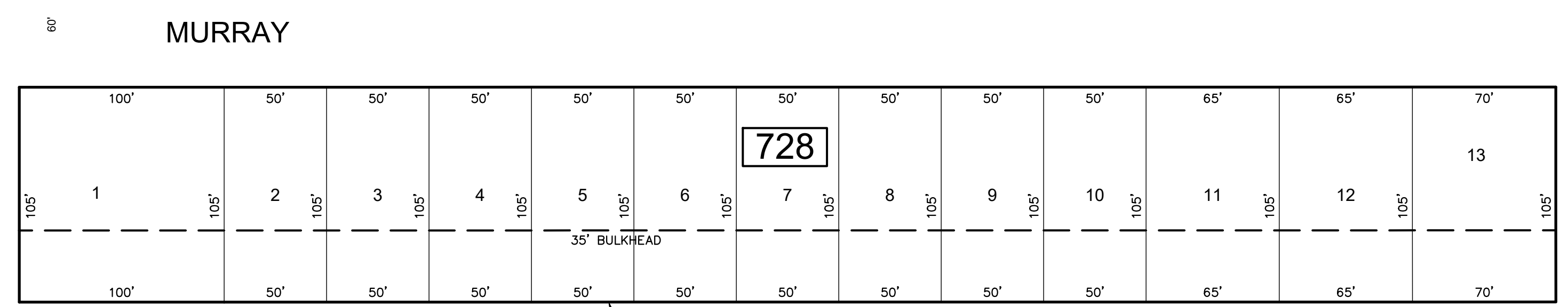


SHEET 113

REVISIONS				
DATE	BY	LIC. NO	BLOCK	LOT
09/2013	CHARLES A. ATKINSON-ARH	33994	729	7
09/2013	CHARLES A. ATKINSON-ARH	33994	729	12
07/2015	CHARLES A. ATKINSON-ARH	33994	729	6
05/2017	ED CLAY - ARH	34842	732	19-20



SHEET 110

ARKANSAS

AVE

KUEHNLE

MURRAY

EMERSON

AVE

MICHIGAN

AVE

MADISON

AVE

OHIO

AVE

AVE

AVE

BLVD

ABSECON

SHEET 115

SHEET 108

SHEET 107

THIS MAP HAS BEEN GIVEN A FORMAL CERTIFICATION BY THE DIVISION OF TAXATION ON NOVEMBER 25, 1997, SIGNED BY WILLIAM H. BLACK, CTA AND ASSIGNED SERIAL NUMBER 778

**TAX MAP**  
**CITY OF ATLANTIC CITY**  
 ATLANTIC COUNTY, NEW JERSEY  
 SCALE: 1" = 50'  
**JOSEPH M DOLAN, PLS, PP**  
 MUNICIPAL LAND SURVEYOR  
 NEW JERSEY LICENSE NO. 23930  
 OFFICE OF THE CITY ENGINEER  
 603 CITY HALL  
 ATLANTIC CITY, NEW JERSEY 08401  
 TO SHOW CONDITIONS AS OF MAY 2019  
 COA# 24GA27973300