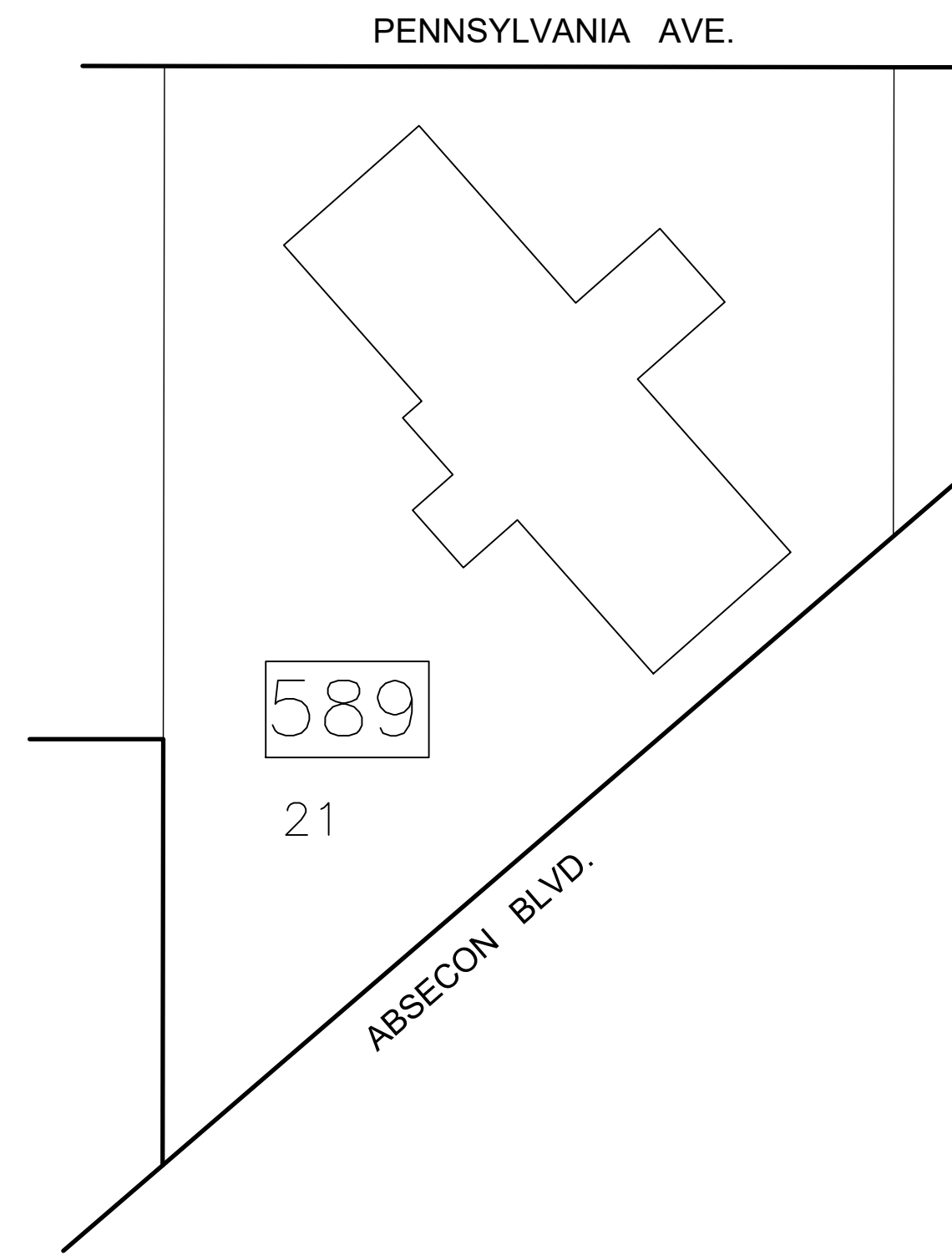


"HIGHGATE"
CONDOMINIUMS
BLOCK 589 LOT 21

1ST FLOOR - RETAIL AREA SPACE			
QUAL	UNIT TYPE	FLOOR	SQ. FT.
C0101		1	1386
C0102		1	608
C0103		1	896
C0104		1	823
C0105		1	1162
C0106		1	1026

TYPICAL FLOORS 2 THROUGH 12, 14 & 15			
QUAL	UNIT TYPE	FLOOR	SQ. FT.
C0201		2	762
C0202		2	840
C0203		2	570
C0204		2	805
C0205		2	805
C0206		2	570
C0207		2	840
C0208		2	570
C0209		2	570
C0210		2	570
C0211		2	840
C0212		2	570
C0213		2	667
C0214		2	805
C0215		2	570
C0216		2	481
C0217		2	570

3RD FL = C0301 THROUGH C0317
 4TH FL = C0401 THROUGH C0417
 5TH FL = C0501 THROUGH C0517
 6TH FL = C0601 THROUGH C0617
 7TH FL = C0701 THROUGH C0717
 8TH FL = C0801 THROUGH C0817
 9TH FL = C0901 THROUGH C0917
 10TH FL = C1001 THROUGH C1017
 11TH FL = C1101 THROUGH C1117
 12TH FL = C1201 THROUGH C1217
 14TH FL = C1401 THROUGH C1417
 15TH FL = C1501 THROUGH C1517



REVISIONS				
DATE	BY	LIC. NO.	BLOCK	LOT

THIS MAP HAS BEEN GIVEN A FORMAL CERTIFICATION BY THE DIVISION OF TAXATION ON NOVEMBER 25, 1997, SIGNED BY WILLIAM H. BLACK, CTA AND ASSIGNED SERIAL NUMBER 778

TAX MAP
CITY OF ATLANTIC CITY
 ATLANTIC COUNTY, NEW JERSEY
 NOT TO SCALE DATE: AUG 1995
JOSEPH M DOLAN, PLS, PP
 MUNICIPAL LAND SURVEYOR
 NEW JERSEY LICENSE NO. 23930
 OFFICE OF THE CITY ENGINEER
 603 CITY HALL
 ATLANTIC CITY, NEW JERSEY 08401