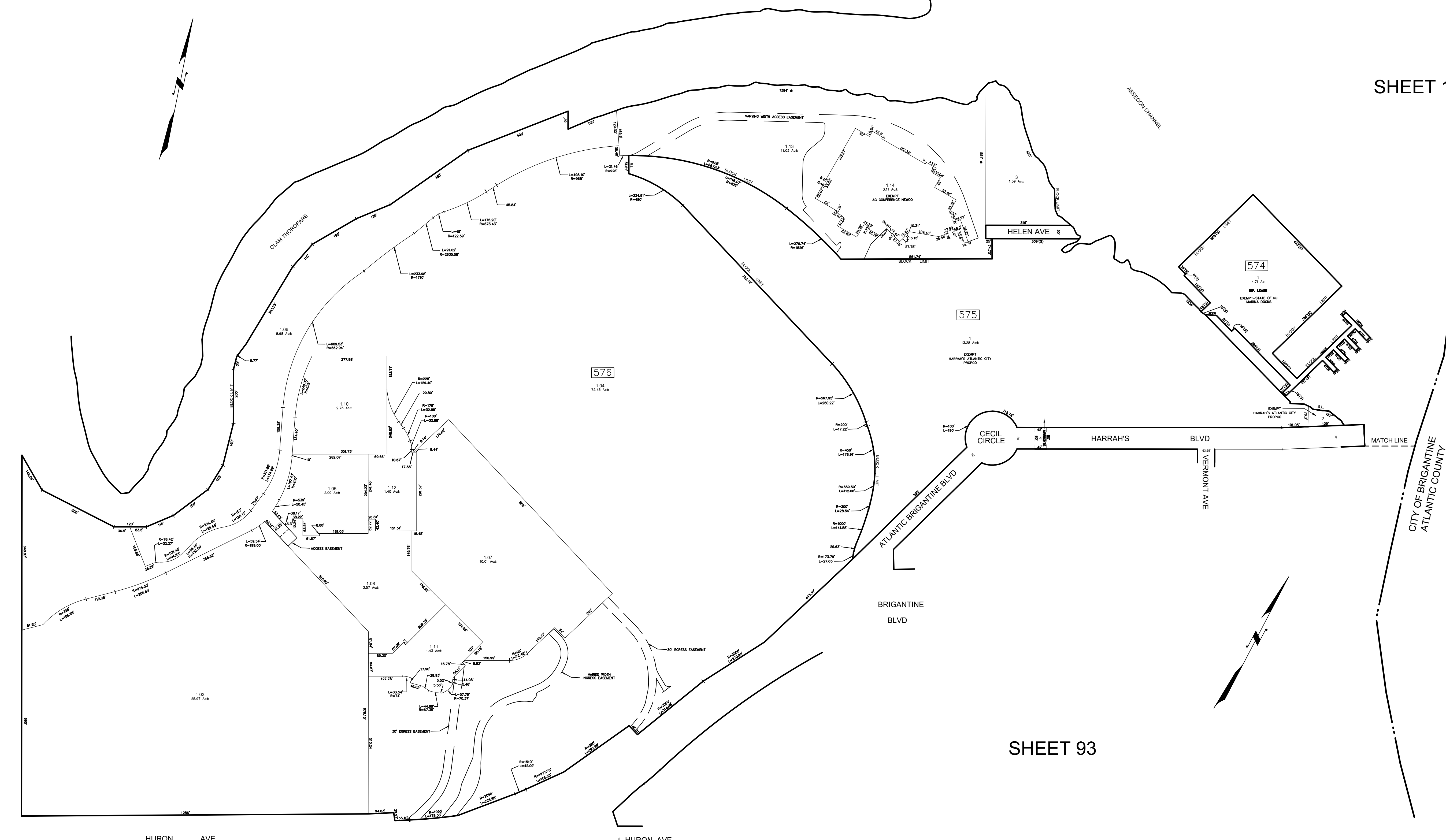


SHEET 131

REVISIONS				
DATE	BY	LIC. NO	BLOCK	LOT
11/2015	CHARLES A. ATKINSON-ARR	33994	576	1.13 & 1.14

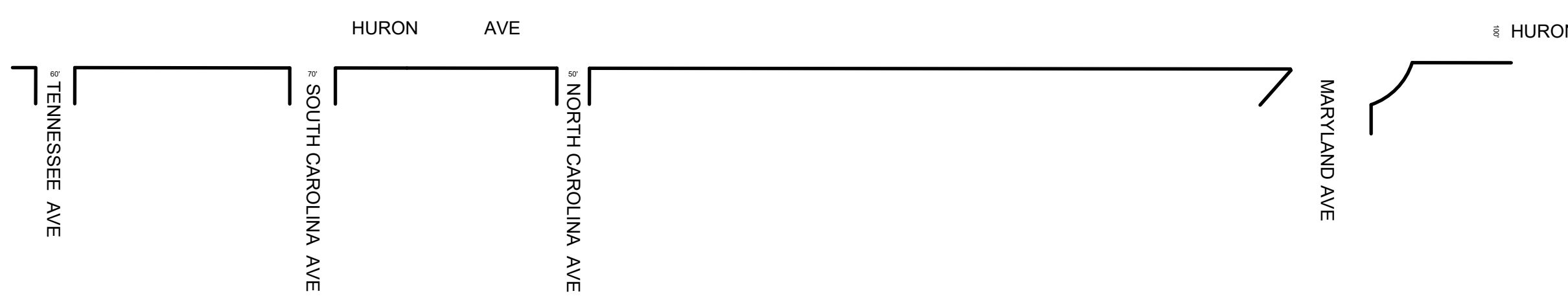
SHEET 131

SHEET 95



SHEET 93

THIS SHEET HAS BEEN DRAWN USING COMPUTER AIDED DRAFTING/DESIGN (CAD/D)



SHEET 96

SHEET 97

SHEET 92

THIS MAP HAS BEEN GIVEN A FORMAL CERTIFICATION BY THE DIVISION OF TAXATION ON NOVEMBER 25, 1997, SIGNED BY WILLIAM H. BLACK, CTA AND ASSIGNED SERIAL NUMBER 778

**TAX MAP**  
**CITY OF ATLANTIC CITY**  
 ATLANTIC COUNTY, NEW JERSEY  
 SCALE: 1" = 200'  
**JOSEPH M DOLAN, PLS, PP**  
 MUNICIPAL LAND SURVEYOR  
 NEW JERSEY LICENSE NO. 23930  
 OFFICE OF THE CITY ENGINEER  
 603 CITY HALL  
 ATLANTIC CITY, NEW JERSEY 08401

TO SHOW CONDITIONS AS OF MAY 2019  
COA# 24GA27973300