

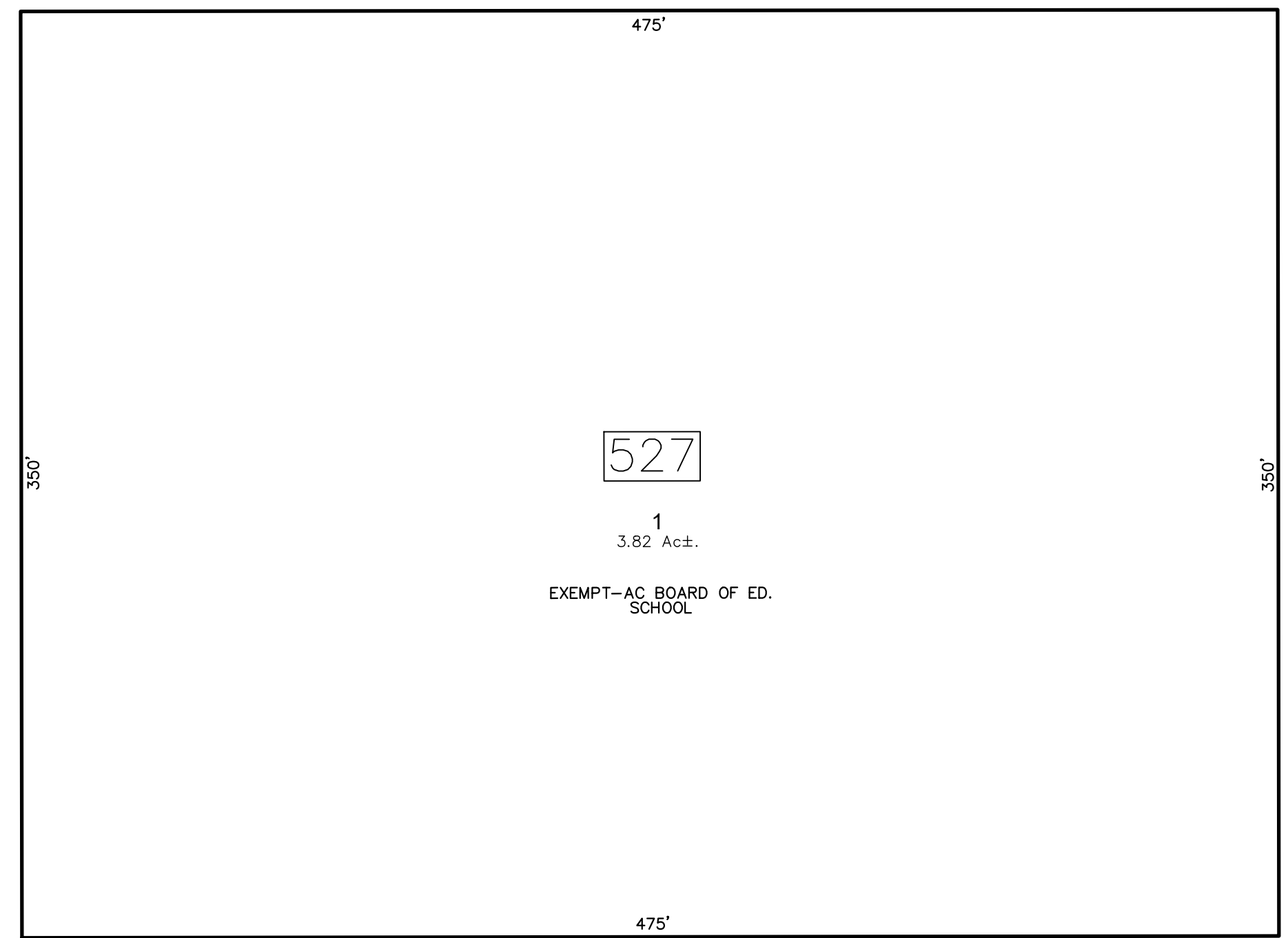
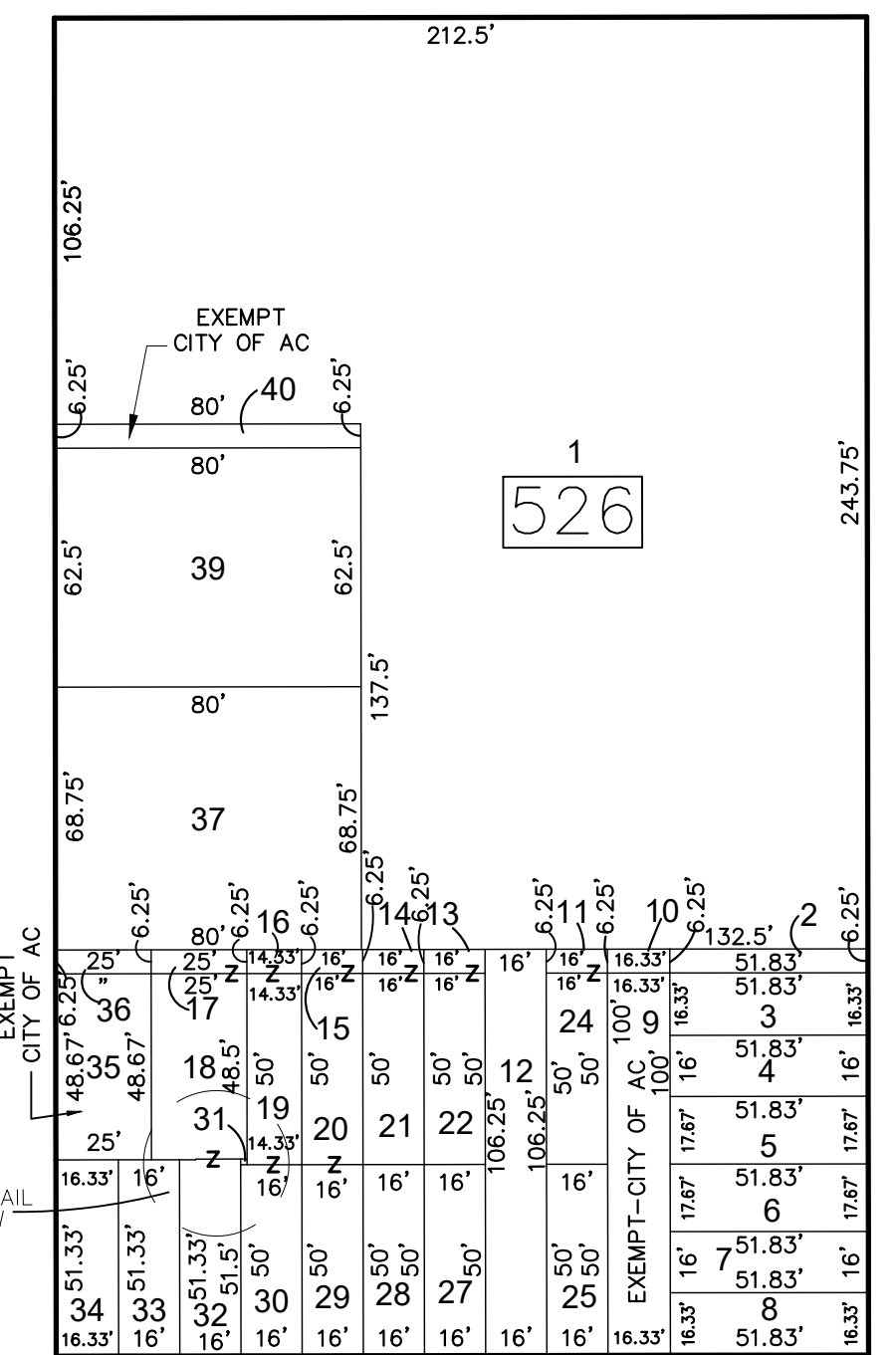
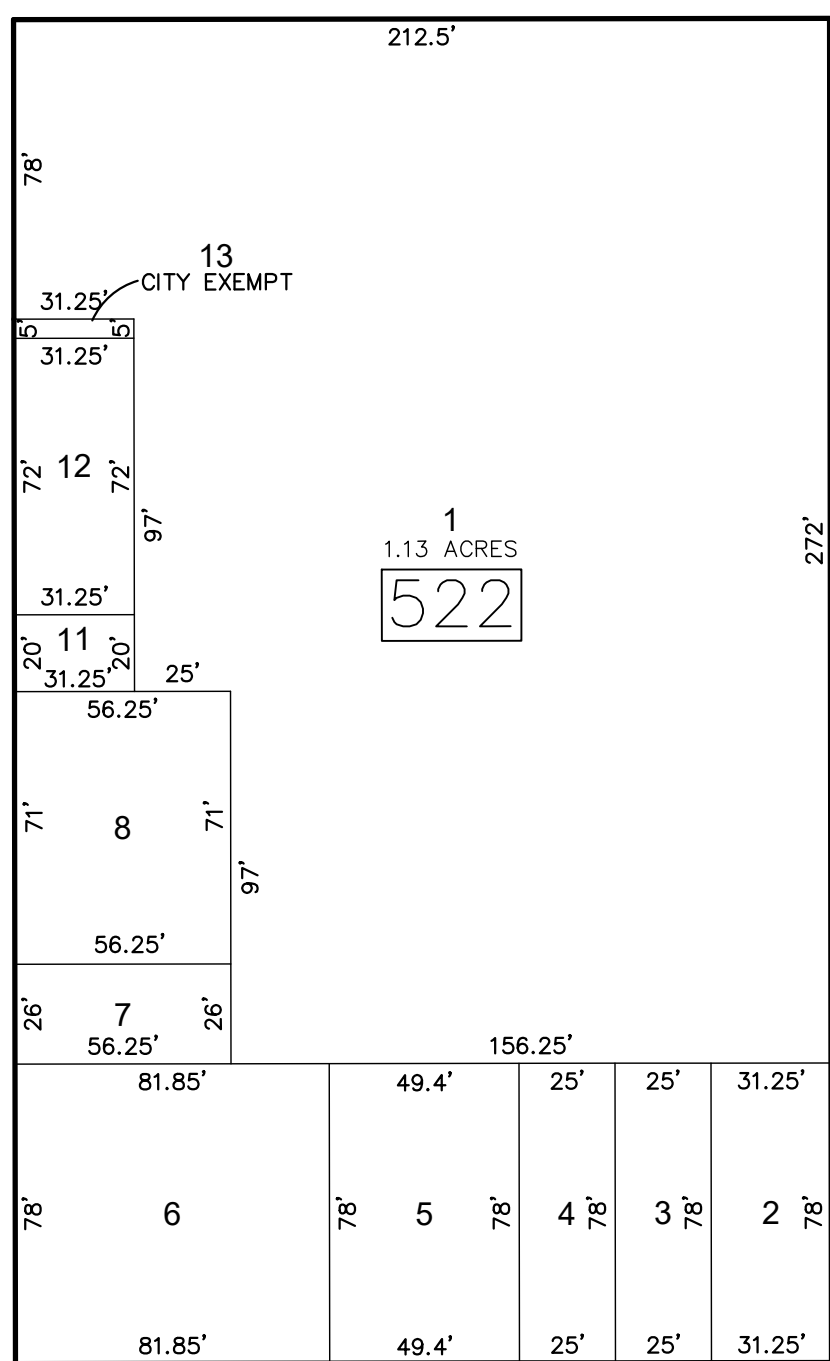
SHEET 99

SHEET 86

TENNESSEE AVE

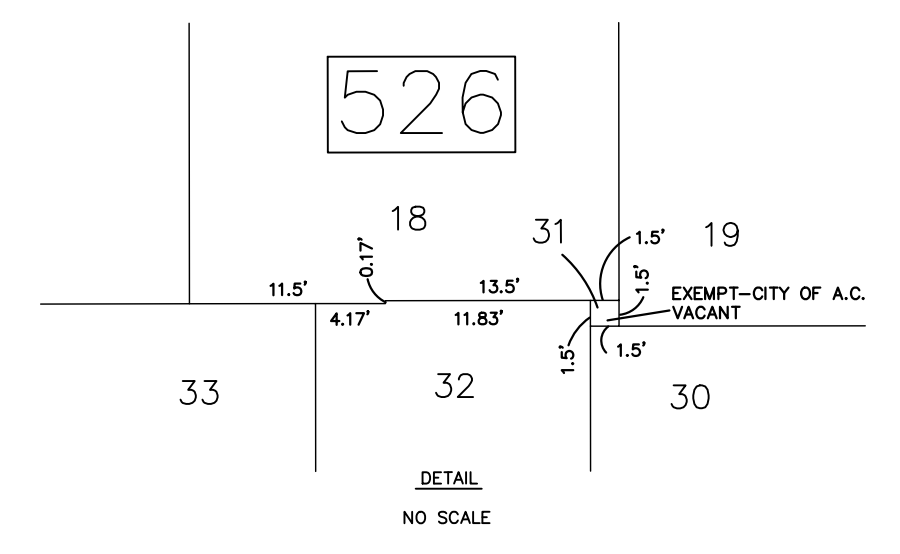
AVE

JAMES ST



CENTER ST

BAY ST



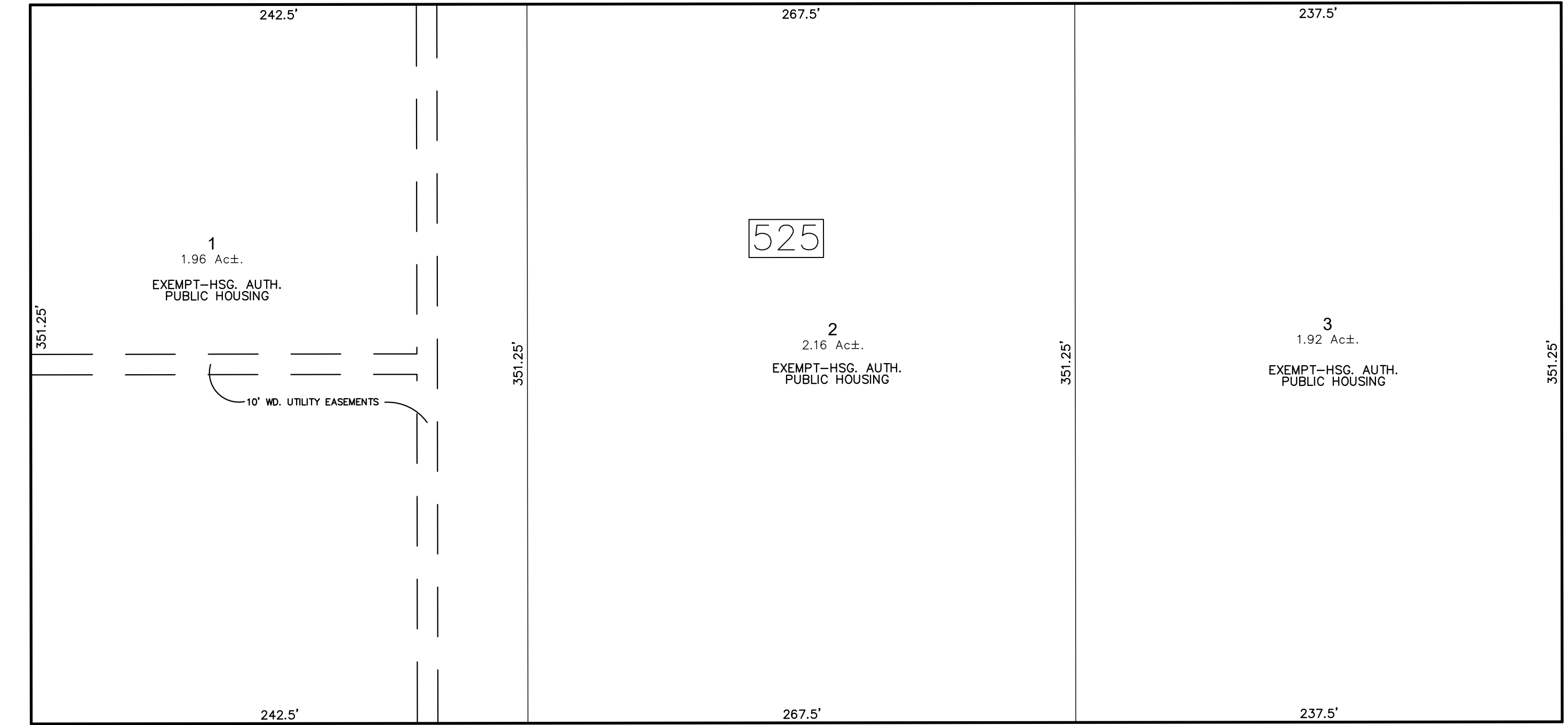
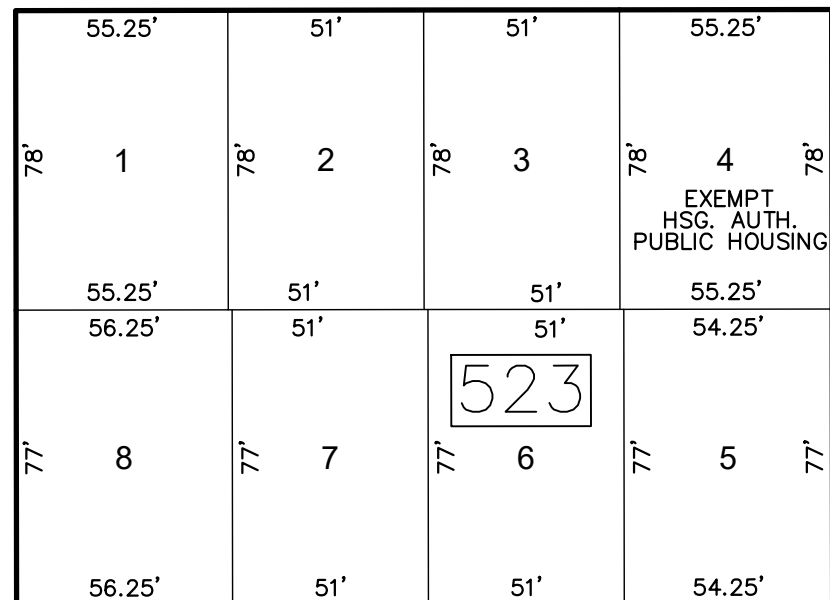
SHEET 100

AVE

AVE

NEW YORK AVE

AVE

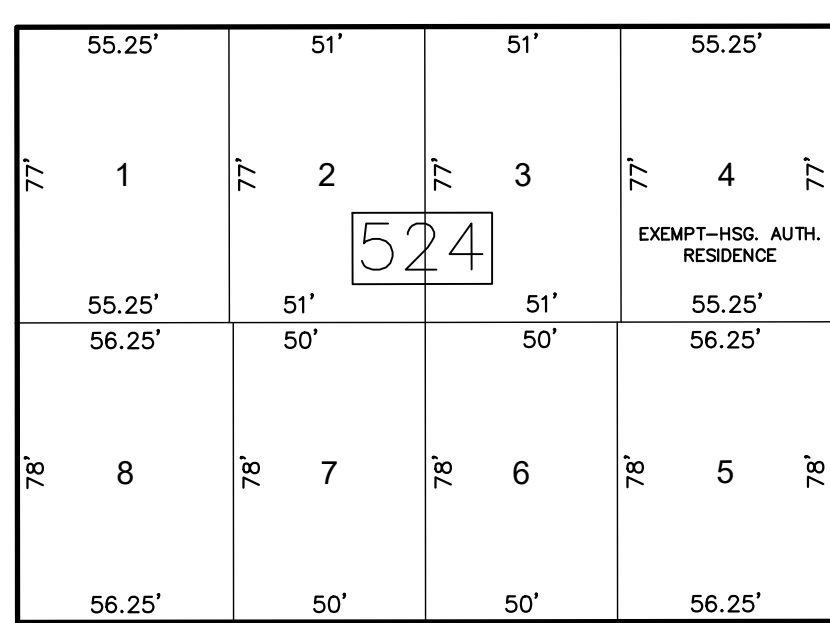


AVE

MAGELLAN AVE

SEWELL AVE

HOWARD ST



KENTUCKY AVE

AVE

ADRIATIC AVE

SHEET 79

THIS MAP HAS BEEN GIVEN A FORMAL CERTIFICATION BY THE DIVISION OF TAXATION ON NOVEMBER 25, 1997, SIGNED BY WILLIAM H. BLACK, CTA AND ASSIGNED SERIAL NUMBER 778

THIS SHEET HAS BEEN DRAWN USING COMPUTER AIDED DRAFTING/DESIGN (CAD/D)

REVISIONS				
DATE	BY	LIC. NO.	BLOCK	LOT

SHEET 84

SHEET 80

TAX MAP CITY OF ATLANTIC CITY

ATLANTIC COUNTY, NEW JERSEY SCALE: 1" = 50' DATE: AUG 1995

JOSEPH M DOLAN, PLS, PP

MUNICIPAL LAND SURVEYOR NEW JERSEY LICENSE NO. 23930 OFFICE OF THE CITY ENGINEER 603 CITY HALL ATLANTIC CITY, NEW JERSEY 08401

TO SHOW CONDITIONS AS OF MAY 2019

COA# 24GA27973300