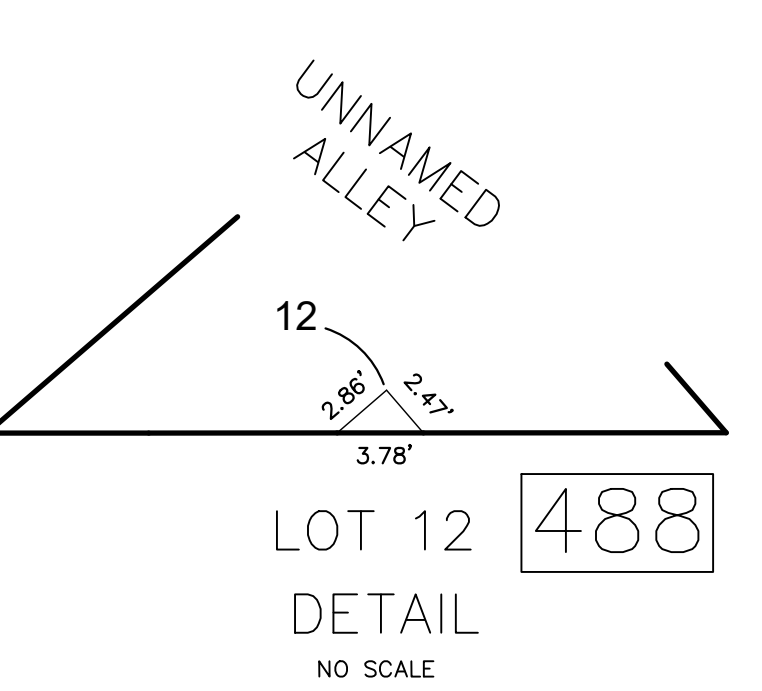


SHEET 84

SHEET 80



SHEET 102

SHEET 81

REVISIONS

DATE	BY	LIC. NO.	BLOCK	LOT
09/2013	CHARLES A. ATKINSON-ARH	33994	495	3
03/2014	CHARLES A. ATKINSON-ARH	33994	489	7
07/2015	CHARLES A. ATKINSON-ARH	33994	495	4
01/2016	ED CLAY - ARH	34842	487	2
05/2017	ED CLAY - ARH	34842	485	4-5

THIS SHEET HAS BEEN DRAWN USING COMPUTER AIDED DRAFTING/DESIGN (CADD)

THIS MAP HAS BEEN GIVEN A FORMAL CERTIFICATION BY THE DIVISION OF TAXATION ON NOVEMBER 25, 1997, SIGNED BY WILLIAM H. BLACK, CTA AND ASSIGNED SERIAL NUMBER 778

**TAX MAP**  
CITY OF ATLANTIC CITY  
ATLANTIC COUNTY, NEW JERSEY  
SCALE: 1" = 50'  
**JOSEPH M DOLAN, PLS, PP**  
MUNICIPAL LAND SURVEYOR  
NEW JERSEY LICENSE NO. 23930  
OFFICE OF THE CITY ENGINEER  
603 CITY HALL  
ATLANTIC CITY, NEW JERSEY 08401  
TO SHOW CONDITIONS AS OF MAY 2019  
COA# 24GA27973300