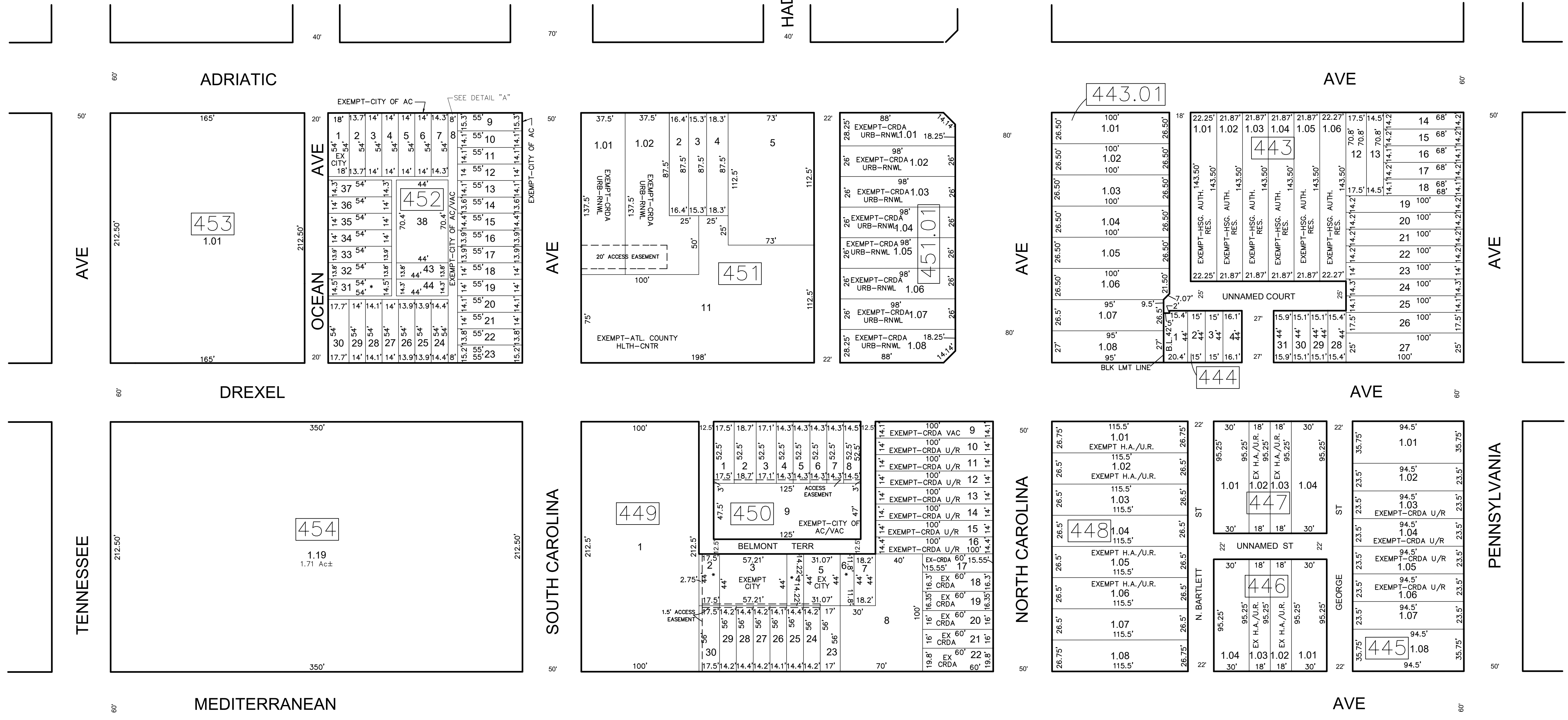
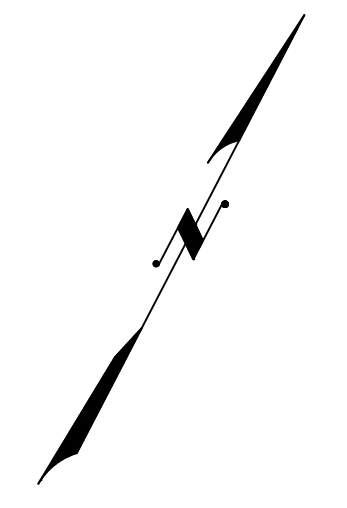


SHEET 86

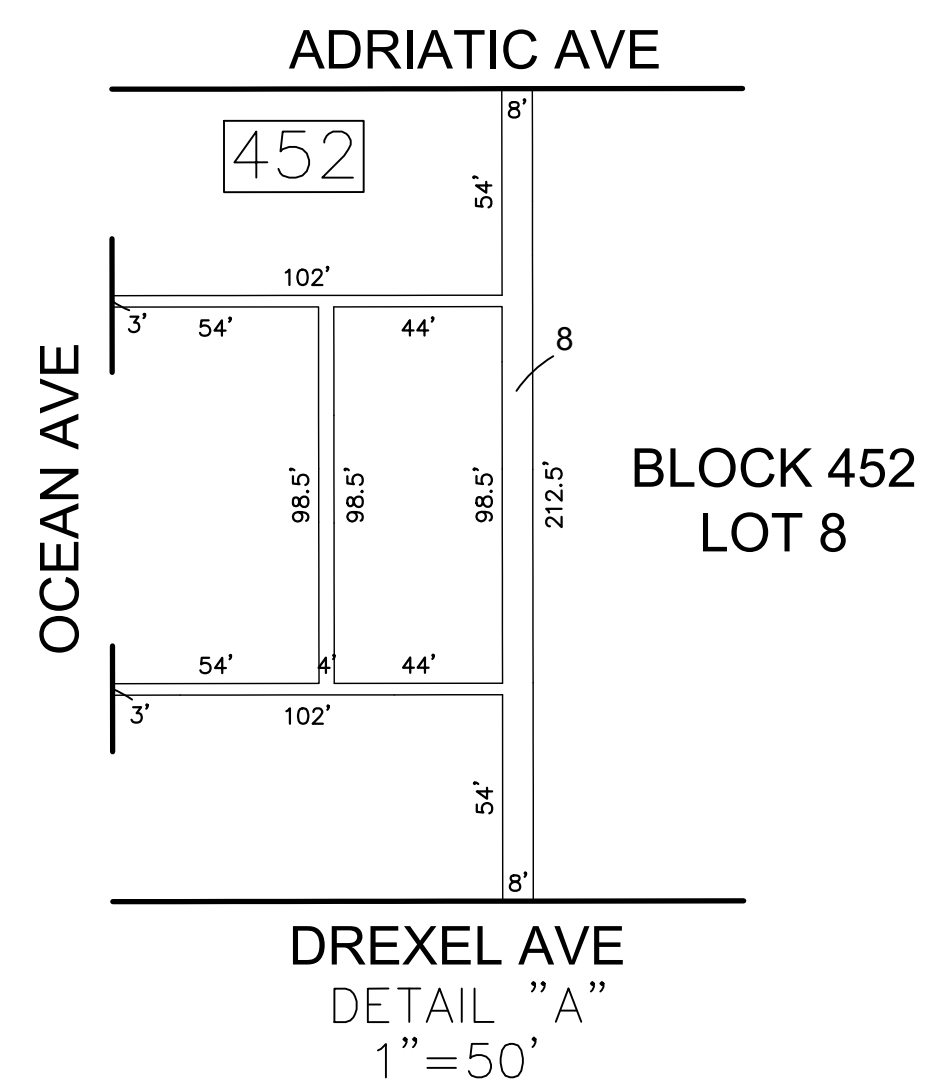
| REVISIONS |               |         |       |           |
|-----------|---------------|---------|-------|-----------|
| DATE      | BY            | LIC. NO | BLOCK | LOT       |
| 01/2016   | ED CLAY - ARH | 34842   | 454   | 1,19      |
| 05/2017   | ED CLAY - ARH | 34842   | 453   | 1.01-1.24 |
|           |               |         |       |           |
|           |               |         |       |           |
|           |               |         |       |           |

THIS SHEET HAS BEEN DRAWN USING COMPUTER AIDED DRAFTING/DESIGN (CADD)



SHEET 79

SHEET 77



LEGEND: TAX EXEMPT PROPERTIES

- \* CITY OF ATLANTIC CITY
- U/R URBAN RENEWAL (URBN-RNWL)

SHEET 73

THIS MAP HAS BEEN GIVEN A FORMAL CERTIFICATION BY THE DIVISION OF TAXATION ON NOVEMBER 25, 1997, SIGNED BY WILLIAM H. BLACK, CTA AND ASSIGNED SERIAL NUMBER 778

**TAX MAP**  
**CITY OF ATLANTIC CITY**  
 ATLANTIC COUNTY, NEW JERSEY  
 SCALE: 1" = 50'  
**JOSEPH M DOLAN, PLS, PP**  
 MUNICIPAL LAND SURVEYOR  
 NEW JERSEY LICENSE NO. 23930  
 OFFICE OF THE CITY ENGINEER  
 603 CITY HALL  
 ATLANTIC CITY, NEW JERSEY 08401

TO SHOW CONDITIONS AS OF MAY 2019

COA# 24GA27973300