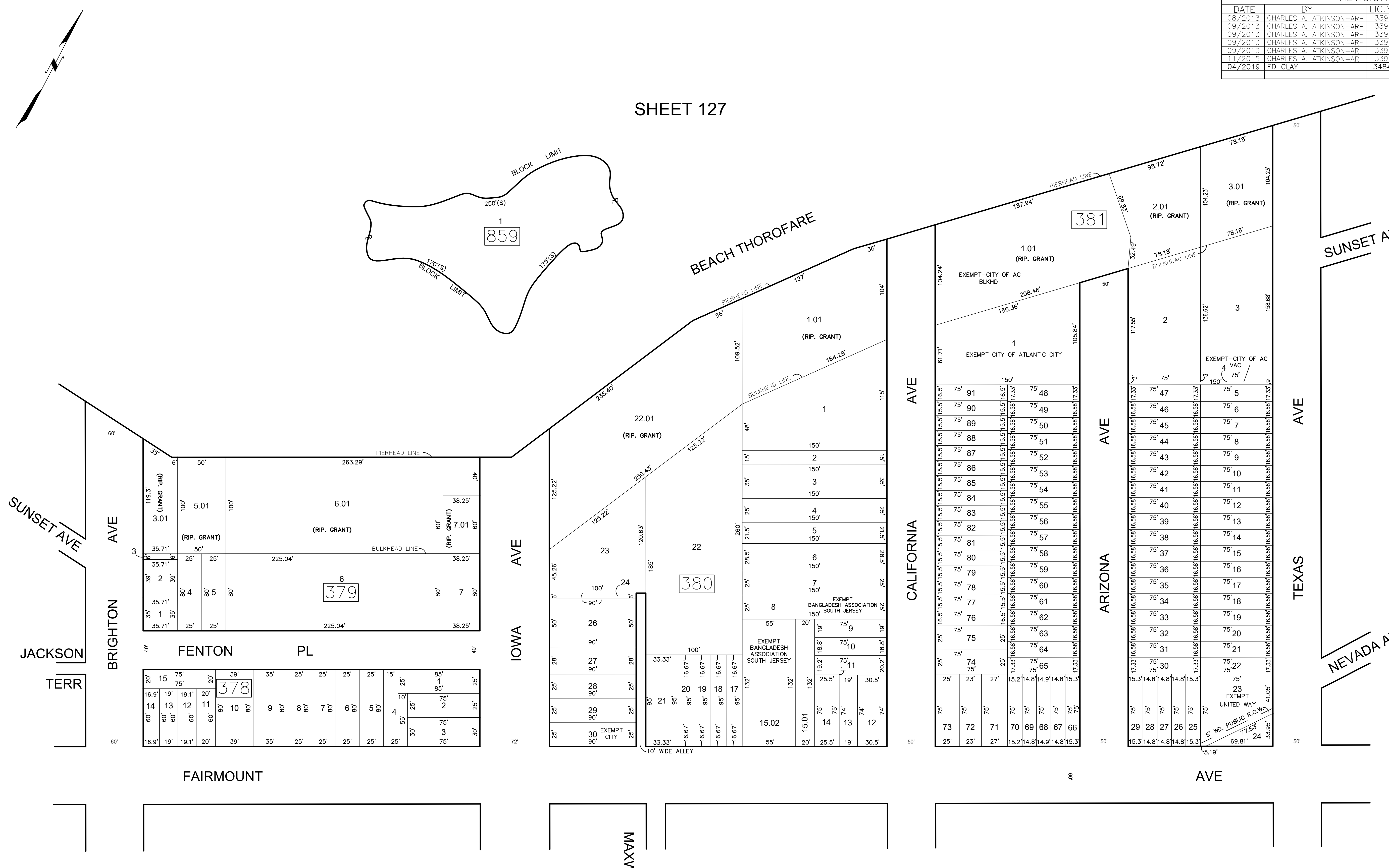


REVISIONS				
DATE	BY	LIC. NO	BLOCK	LOT
08/2013	CHARLES A. ATKINSON-ARH	33994	380	21
09/2013	CHARLES A. ATKINSON-ARH	33994	380	15
09/2013	CHARLES A. ATKINSON-ARH	33994	381	1
09/2013	CHARLES A. ATKINSON-ARH	33994	381	2
09/2013	CHARLES A. ATKINSON-ARH	33994	381	3,01
11/2015	CHARLES A. ATKINSON-ARH	33994	380	15,16
04/2019	ED CLAY	34842	380	25

SHEET 127



SHEET 67

SHEET 69

THIS SHEET HAS BEEN DRAWN USING COMPUTER AIDED DRAFTING/DESIGN (CAD/D)

THIS MAP HAS BEEN GIVEN A FORMAL CERTIFICATION BY THE DIVISION OF TAXATION ON NOVEMBER 25, 1997, SIGNED BY WILLIAM H. BLACK, CTA AND ASSIGNED SERIAL NUMBER 778

TAX MAP
CITY OF ATLANTIC CITY
 ATLANTIC COUNTY, NEW JERSEY
 SCALE: 1" = 50'
JOSEPH M DOLAN, PLS, PP
 MUNICIPAL LAND SURVEYOR
 NEW JERSEY LICENSE NO. 23930
 OFFICE OF THE CITY ENGINEER
 603 CITY HALL
 ATLANTIC CITY, NEW JERSEY 08401

SHEET 60

TO SHOW CONDITIONS AS OF MAY 2019

COA# 24GA27973300