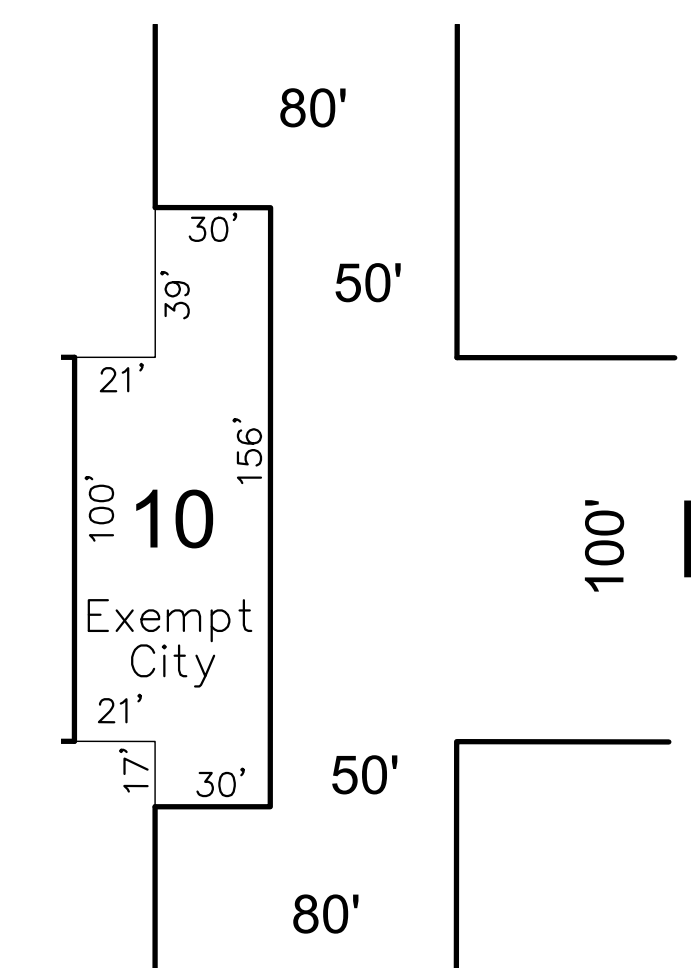
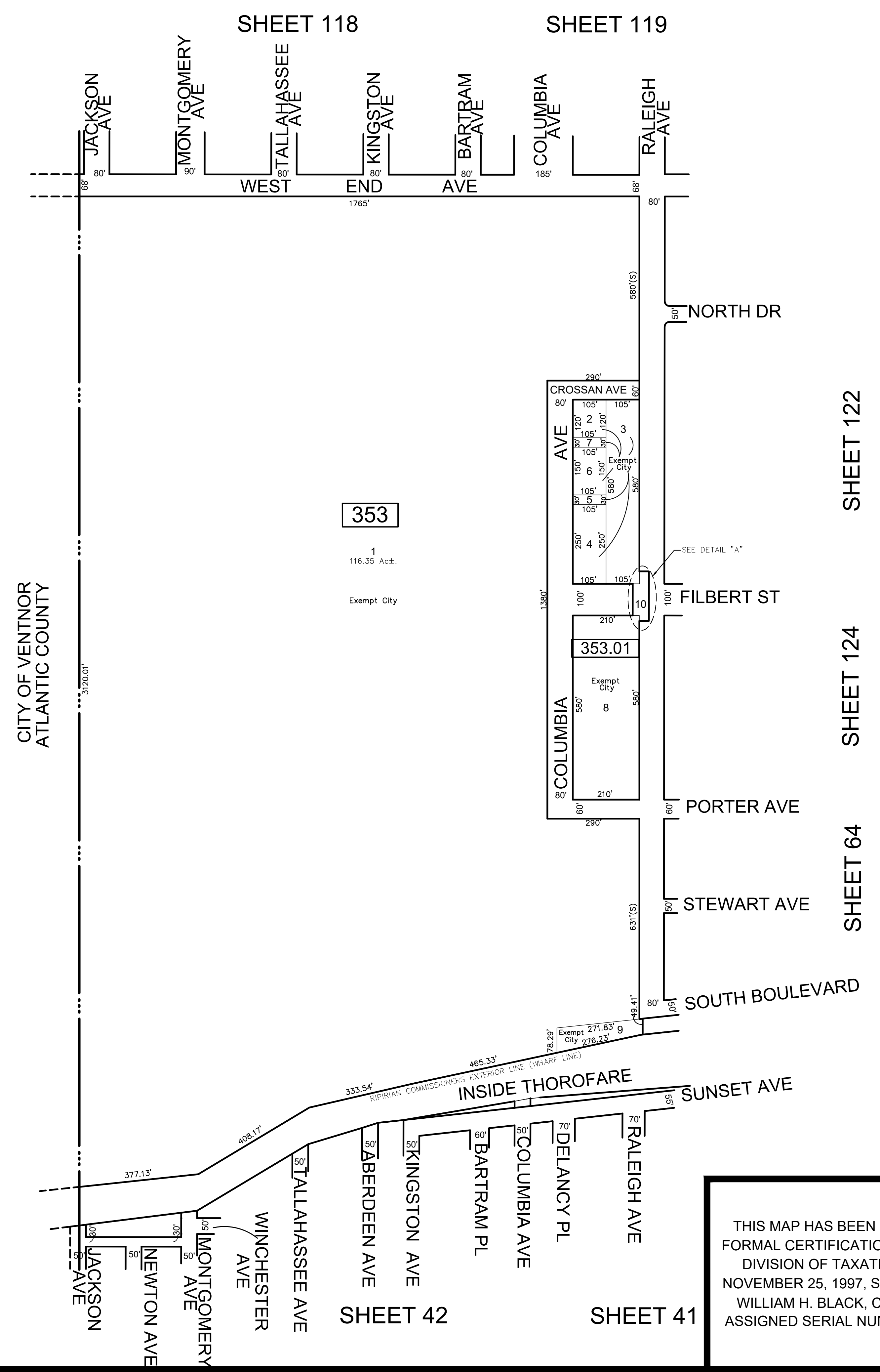


REVISIONS				
DATE	BY	LIC. NO	BLOCK	LOT

**353.01**



SEE DETAIL "A"  
SCALE 1"=50'



CITY OF VENTNOR  
ATLANTIC COUNTY

**353**

1  
116.35 Ac±.  
Exempt City

AVE  
CROSSAN AVE  
AVE  
COLUMBIA  
AVE  
FILBERT ST  
PORTER AVE  
STEWART AVE  
SOUTH BOULEVARD

SHEET 118  
SHEET 119  
SHEET 122  
SHEET 124  
SHEET 64

SHEET 42

SHEET 41

THIS MAP HAS BEEN GIVEN A FORMAL CERTIFICATION BY THE DIVISION OF TAXATION ON NOVEMBER 25, 1997, SIGNED BY WILLIAM H. BLACK, CTA AND ASSIGNED SERIAL NUMBER 778

**TAX MAP**  
**CITY OF ATLANTIC CITY**  
ATLANTIC COUNTY, NEW JERSEY  
SCALE: 1" = 200'  
**JOSEPH M DOLAN, PLS, PP**  
MUNICIPAL LAND SURVEYOR  
NEW JERSEY LICENSE NO. 23930  
OFFICE OF THE CITY ENGINEER  
603 CITY HALL  
ATLANTIC CITY, NEW JERSEY 08401

THIS SHEET HAS BEEN DRAWN USING COMPUTER AIDED DRAFTING/DESIGN (CAD/D)

TO SHOW CONDITIONS AS OF MAY 2019

COA# 24GA27973300