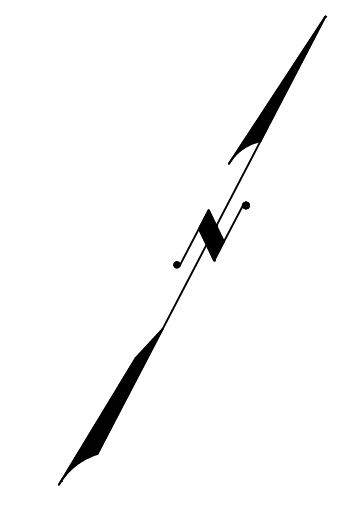


REVISIONS				
DATE	BY	LIC. NO	BLOCK	LOT
11/2014	CHARLES A. ATKINSON	33994	274	16-17
05/2017	ED CLAY - ARH	34842	273	38

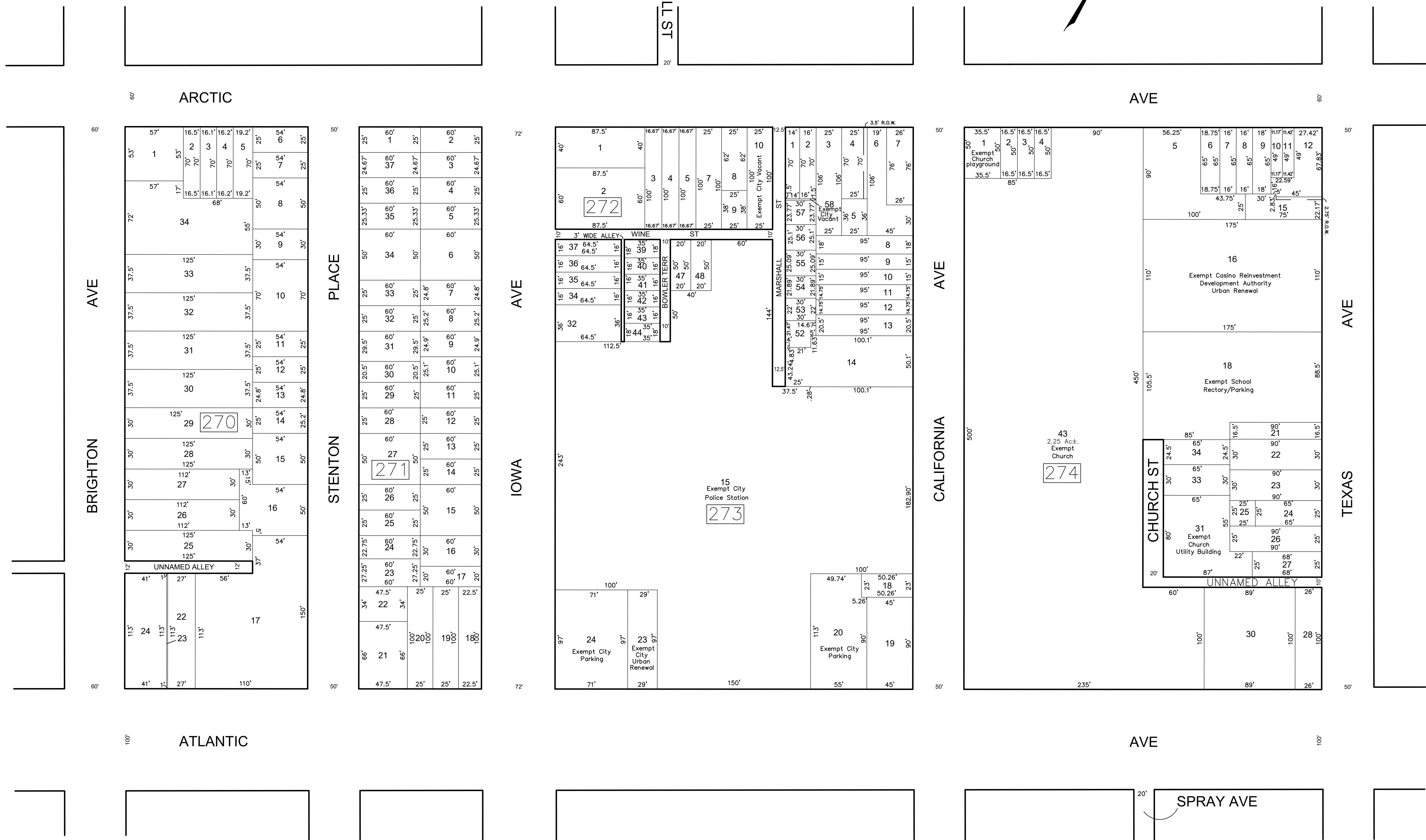
SHEET 60



SHEET 44

SHEET 46

SHEET 32



THIS SHEET HAS BEEN DRAWN USING COMPUTER AIDED DRAFTING/DESIGN (CAD/D)

THIS MAP HAS BEEN GIVEN A FORMAL CERTIFICATION BY THE DIVISION OF TAXATION ON NOVEMBER 25, 1997, SIGNED BY WILLIAM H. BLACK, CTA AND ASSIGNED SERIAL NUMBER 778

**TAX MAP**  
**CITY OF ATLANTIC CITY**  
 ATLANTIC COUNTY, NEW JERSEY  
 SCALE: 1" = 50'  
**JOSEPH M DOLAN, PLS, PP**  
 MUNICIPAL LAND SURVEYOR  
 NEW JERSEY LICENSE NO. 23930  
 OFFICE OF THE CITY ENGINEER  
 603 CITY HALL  
 ATLANTIC CITY, NEW JERSEY 08401