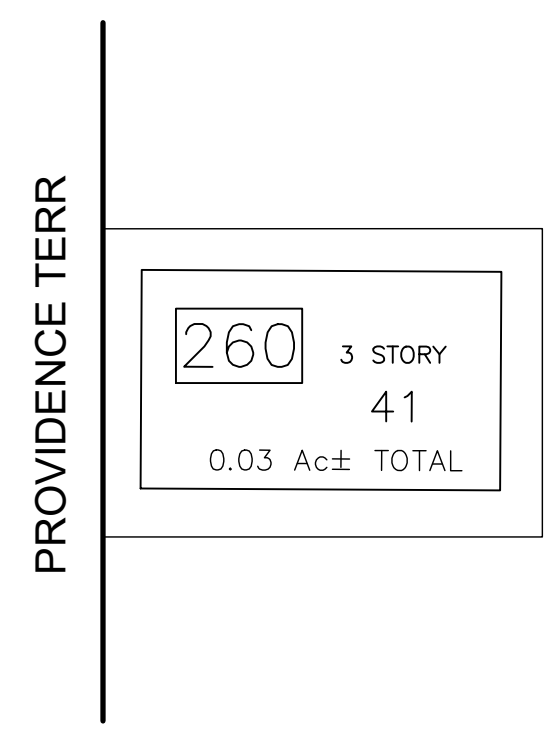


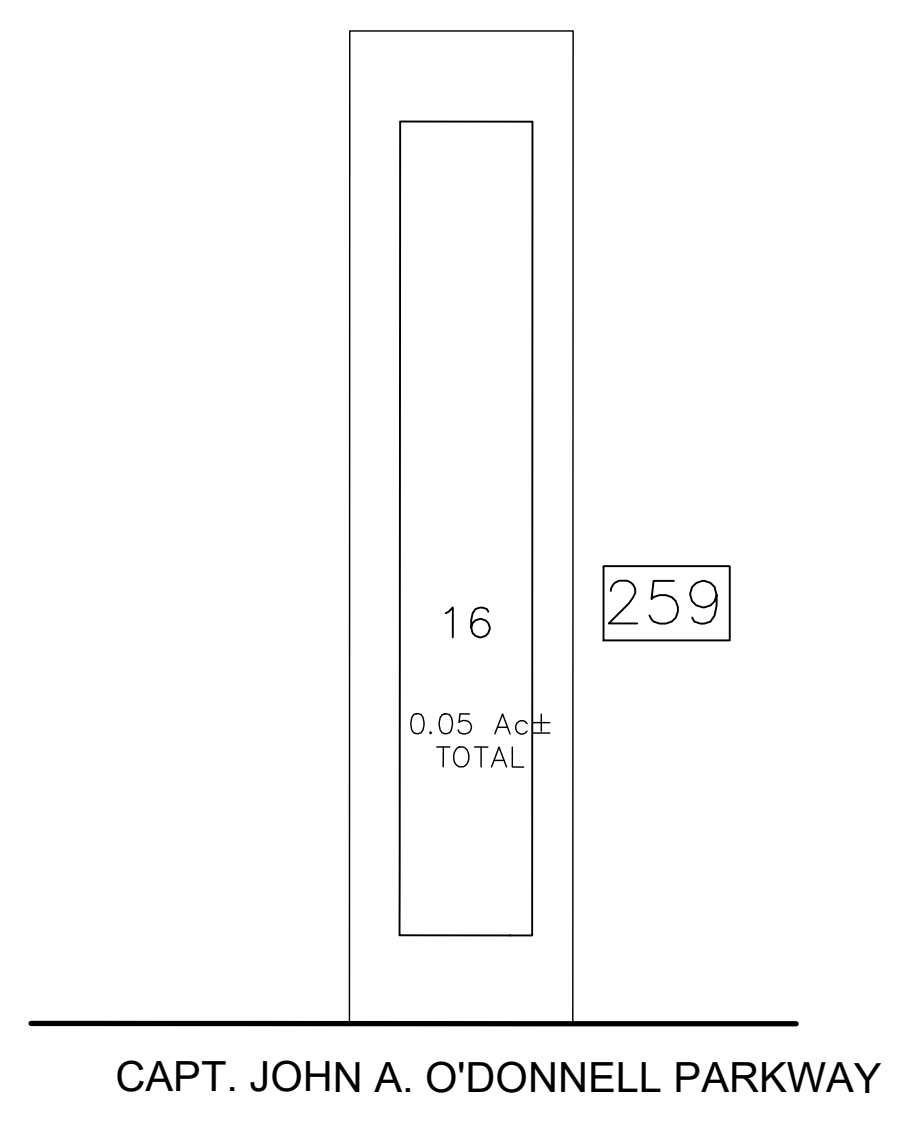
"LANDMARK PROVIDENCE"  
CONDOMINIUMS  
BLOCK 259 LOT 9

QUAL	UNIT TYPE	FLOOR	SQ FT
C0101		1	708
C0102		1	600
C0103		1	720
C0104		1	708
C0201		2	708
C0202		2	540
C0203		2	691
C0204		2	708
C0301		3	708
C0302		3	540
C0303		3	691
C0304		3	708



"PROVIDENCE AVENUE"  
CONDOMINIUMS  
BLOCK 260 LOT 41

LOT NO	UNIT TYPE	FLOOR	SQ FT
4101		1	1697
4102		2	1697
4103		3	1697



"3509 VENTNOR AVE."  
CONDOMINIUMS  
BLOCK 259 LOT 16

QUAL	UNIT TYPE	FLOOR	SQ FT
C0101		1	1206
C0201		2	1206

REVISIONS				
DATE	BY	LIC. NO	BLOCK	LOT

THIS MAP HAS BEEN GIVEN A FORMAL CERTIFICATION BY THE DIVISION OF TAXATION ON NOVEMBER 25, 1997, SIGNED BY WILLIAM H. BLACK, CTA AND ASSIGNED SERIAL NUMBER 778

**TAX MAP**  
**CITY OF ATLANTIC CITY**  
ATLANTIC COUNTY, NEW JERSEY  
NOT TO SCALE DATE: AUG 1995  
**JOSEPH M DOLAN, PLS, PP**  
MUNICIPAL LAND SURVEYOR  
NEW JERSEY LICENSE NO. 23930  
OFFICE OF THE CITY ENGINEER  
603 CITY HALL  
ATLANTIC CITY, NEW JERSEY 08401  
TO SHOW CONDITIONS AS OF MAY 2019  
COA# 24GA27973300