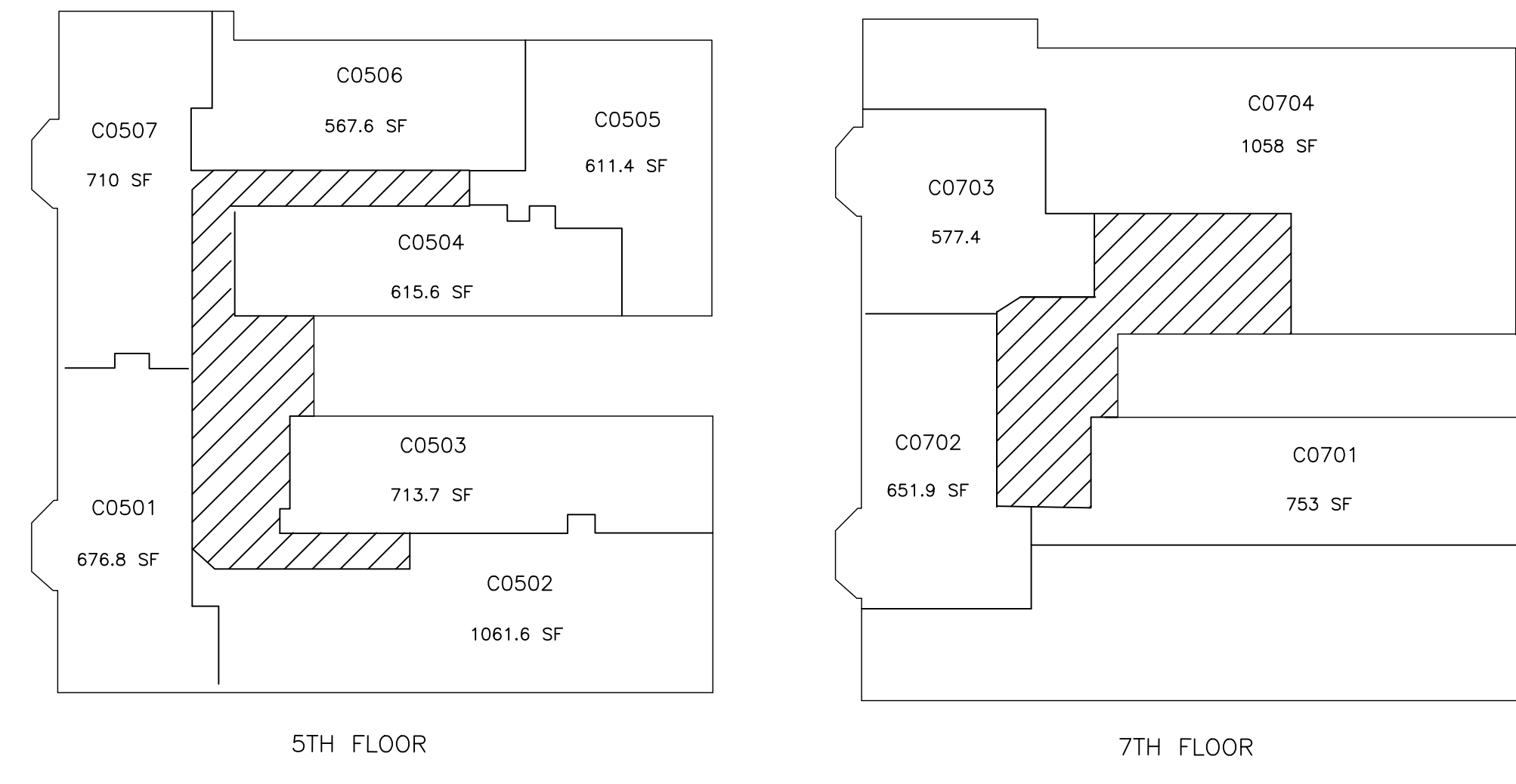
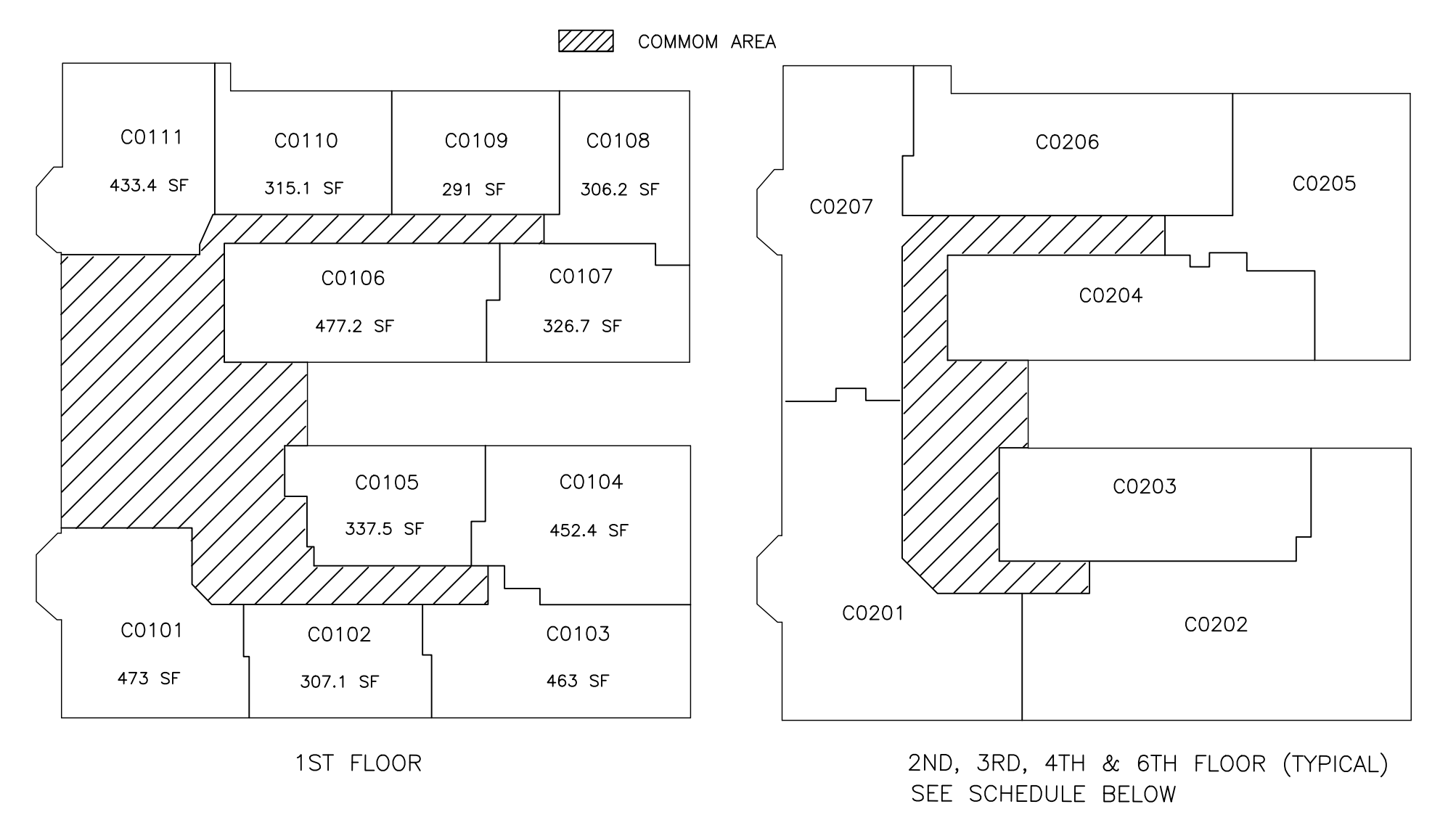
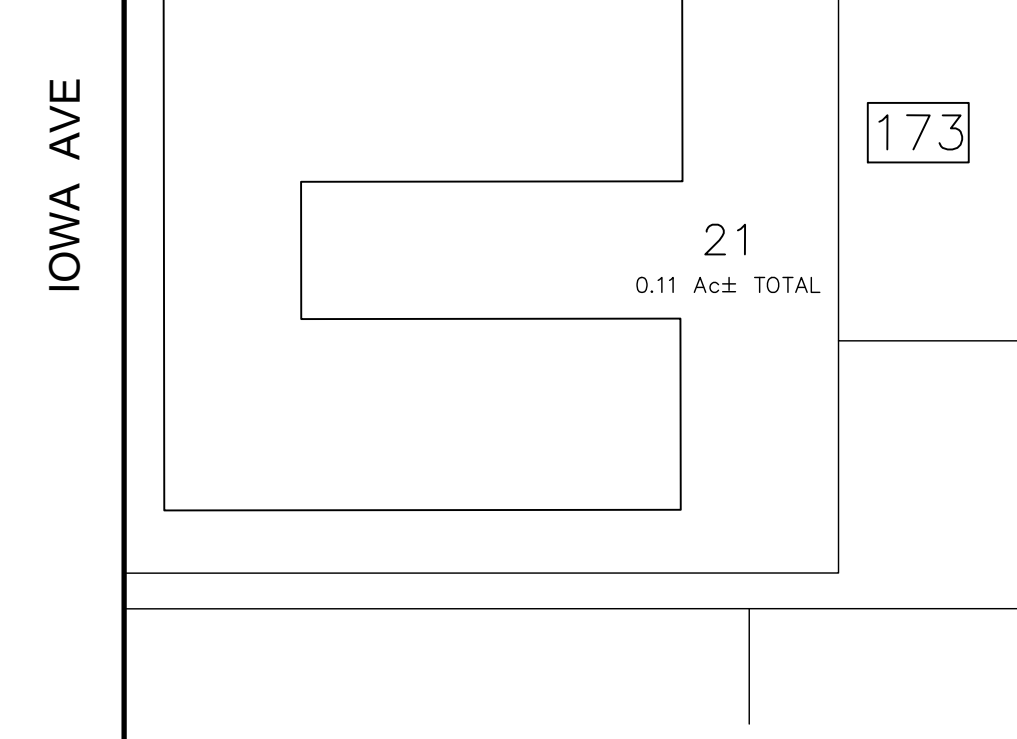
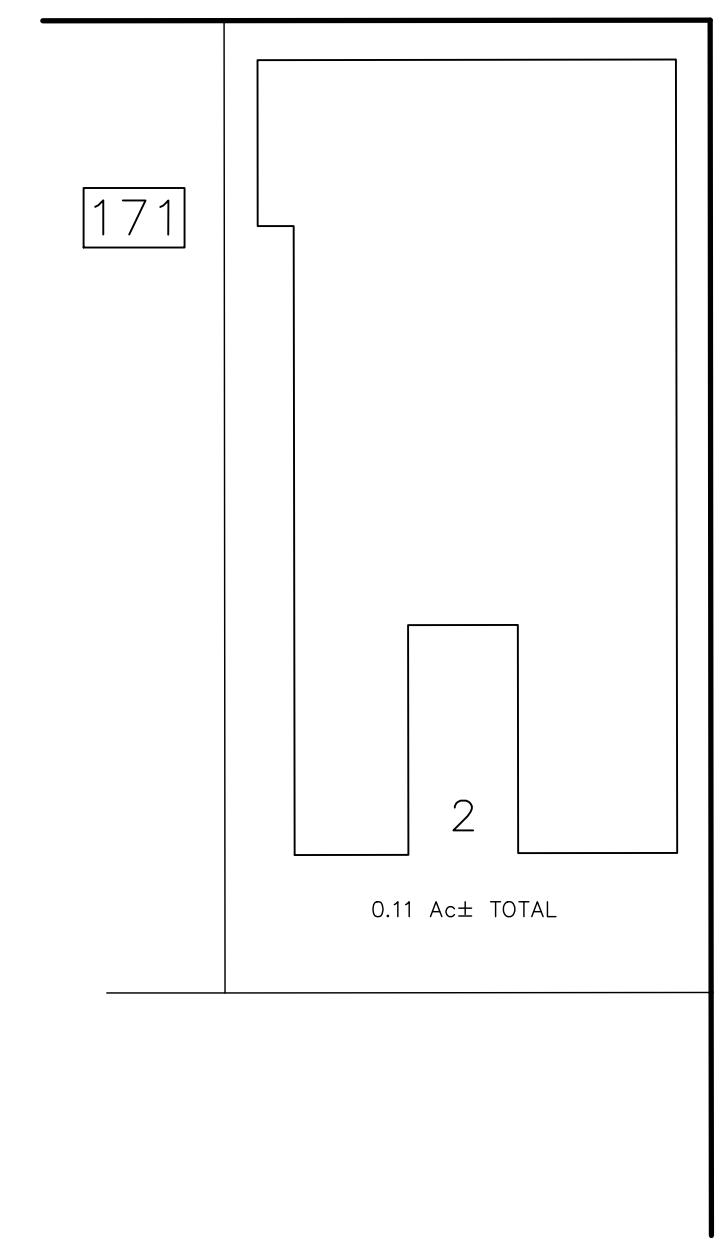


"BIARRITZ"
CONDOMINIUMS
BLOCK 173 LOT 21

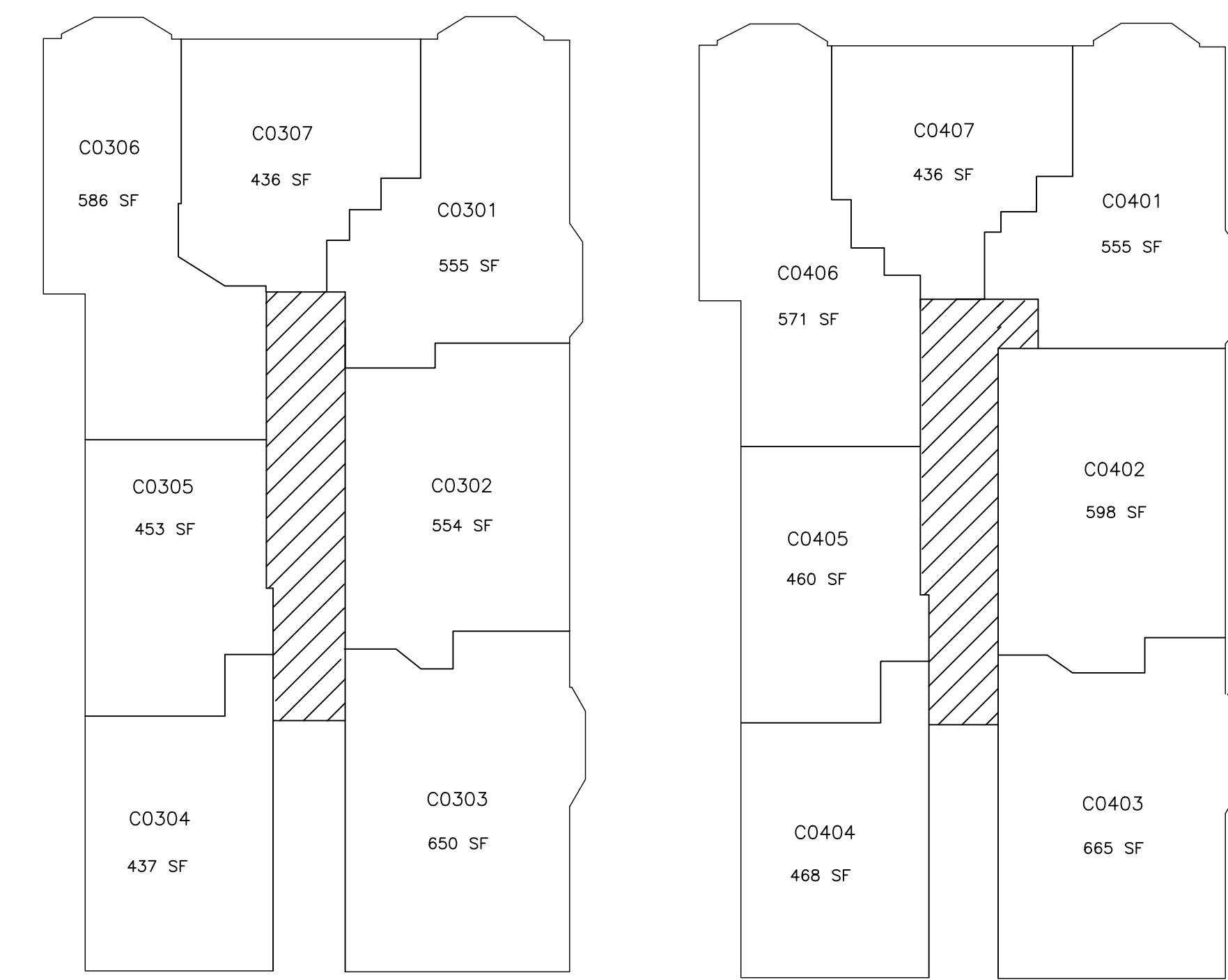
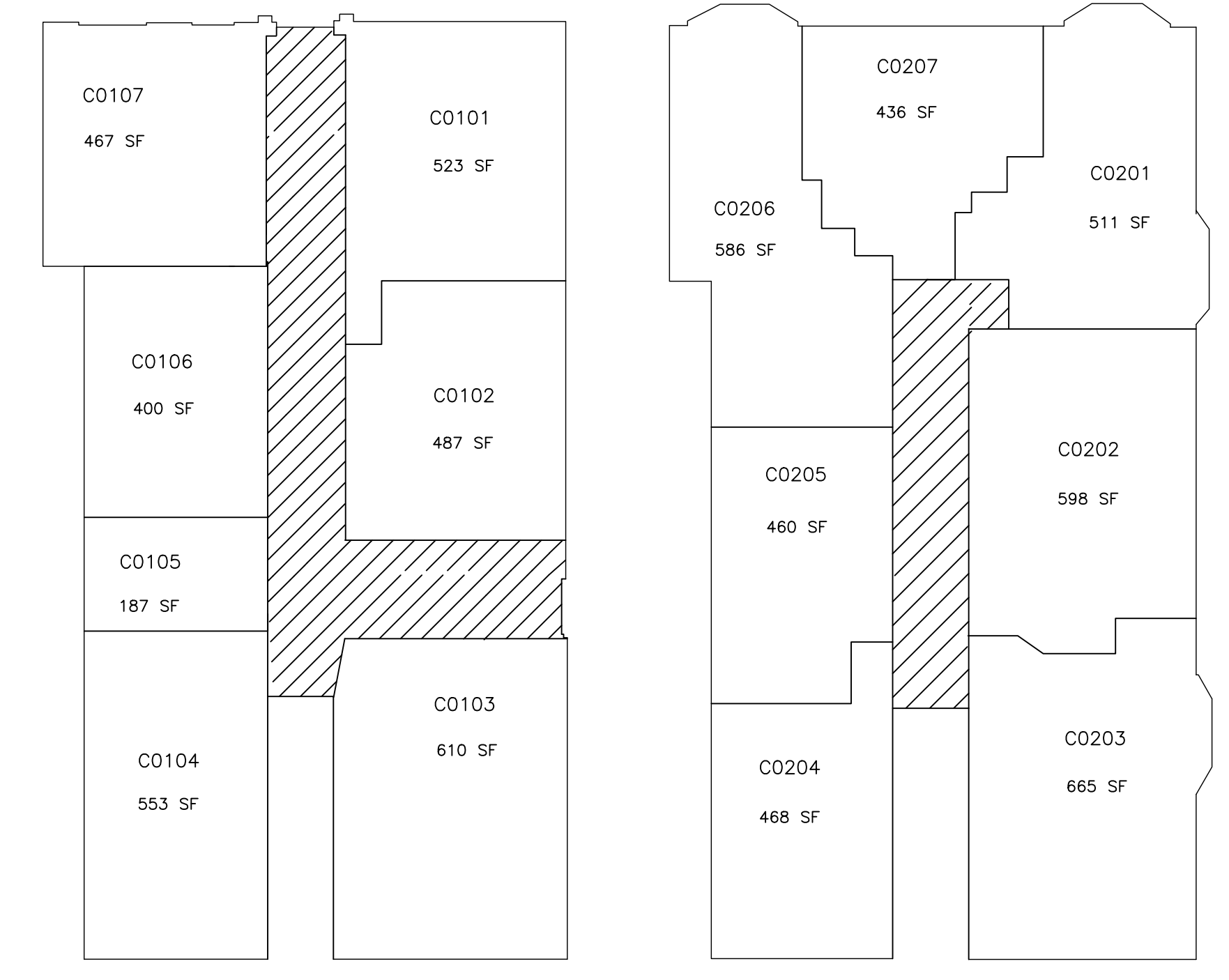


QUAL	UNIT TYPE	FLOOR	SQ FT	QUAL	UNIT TYPE	FLOOR	SQ FT	QUAL	UNIT TYPE	FLOOR	SQ FT	QUAL	UNIT TYPE	FLOOR	SQ FT
C0201		2	850	C0301		3	860	C0401		4	845	C0601		6	677
C0202		2	1023	C0302		3	1029	C0402		4	1027	C0602		6	1183
C0203		2	540	C0303		3	542	C0403		4	541	C0603		6	539
C0204		2	621	C0304		3	602	C0404		4	598	C0604		6	616
C0205		2	612	C0305		3	610	C0405		4	607	C0605		6	611
C0206		2	573	C0306		3	571	C0406		4	573	C0606		6	571
C0207		2	694	C0307		3	709	C0407		4	709	C0607		6	705

ATLANTIC AVE



"ATLANTIS"
CONDOMINIUMS
BLOCK 171 LOT 2



THIS MAP HAS BEEN GIVEN A FORMAL CERTIFICATION BY THE DIVISION OF TAXATION ON NOVEMBER 25, 1997, SIGNED BY WILLIAM H. BLACK, CTA AND ASSIGNED SERIAL NUMBER 778

TAX MAP
CITY OF ATLANTIC CITY
ATLANTIC COUNTY, NEW JERSEY
NOT TO SCALE
JOSEPH M DOLAN, PLS, PP
MUNICIPAL LAND SURVEYOR
NEW JERSEY LICENSE NO. 23930
OFFICE OF THE CITY ENGINEER
603 CITY HALL
ATLANTIC CITY, NEW JERSEY 08401

REVISIONS				
DATE	BY	LIC. NO.	BLOCK	LOT