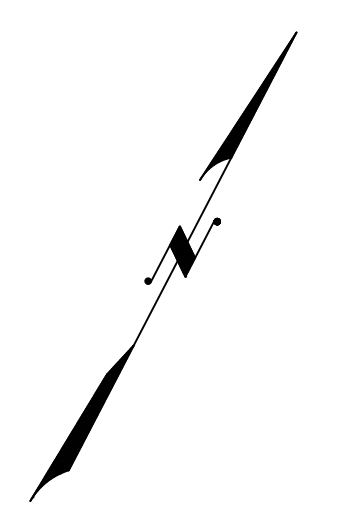


SHEET 47

S.J.T.A.
CORRIDOR
R.O.W.

S.J.T.A.
CORRIDOR
R.O.W.



ATLANTIC

AVE

SHEET 31

MISSISSIPPI AVE

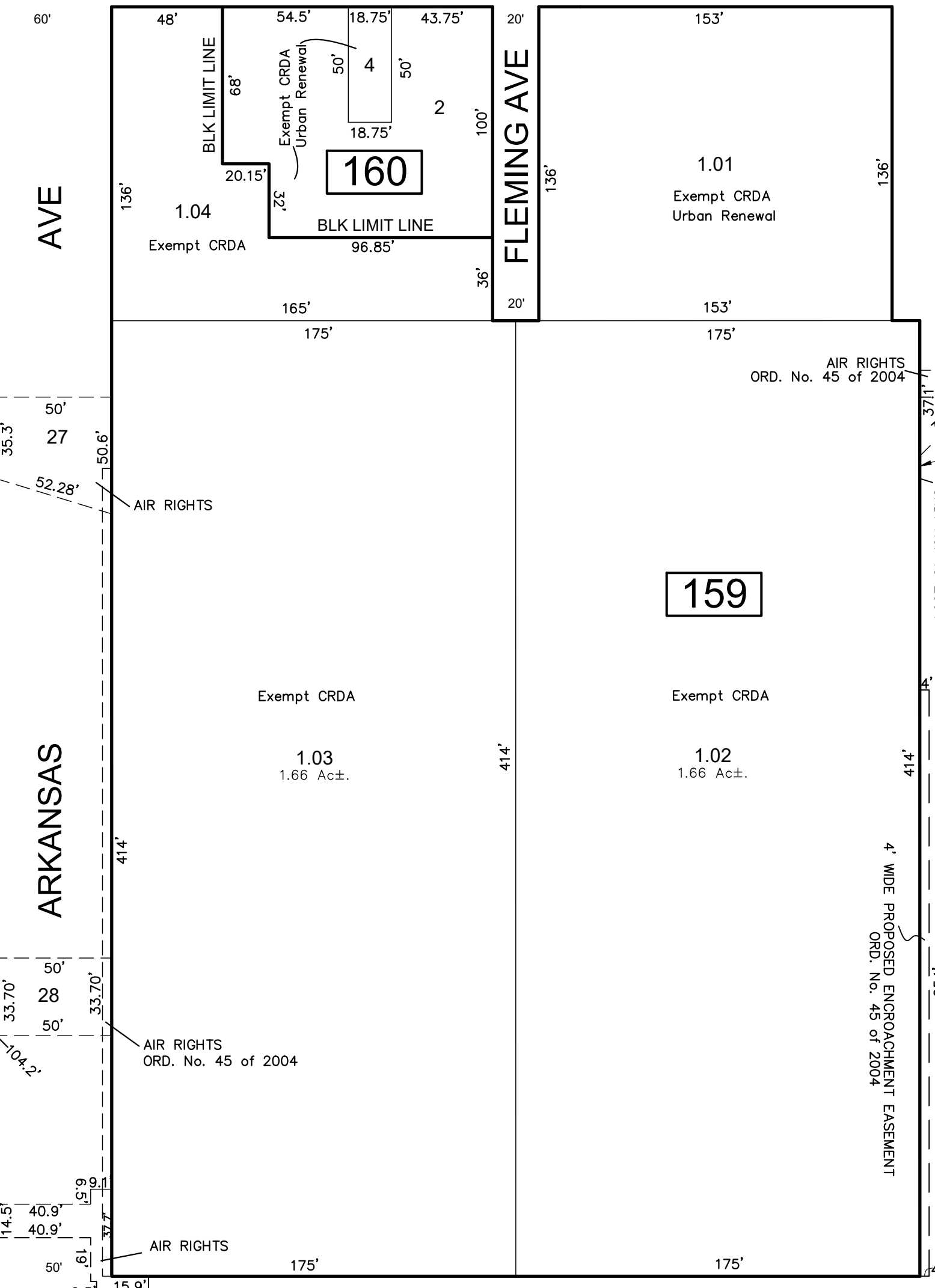
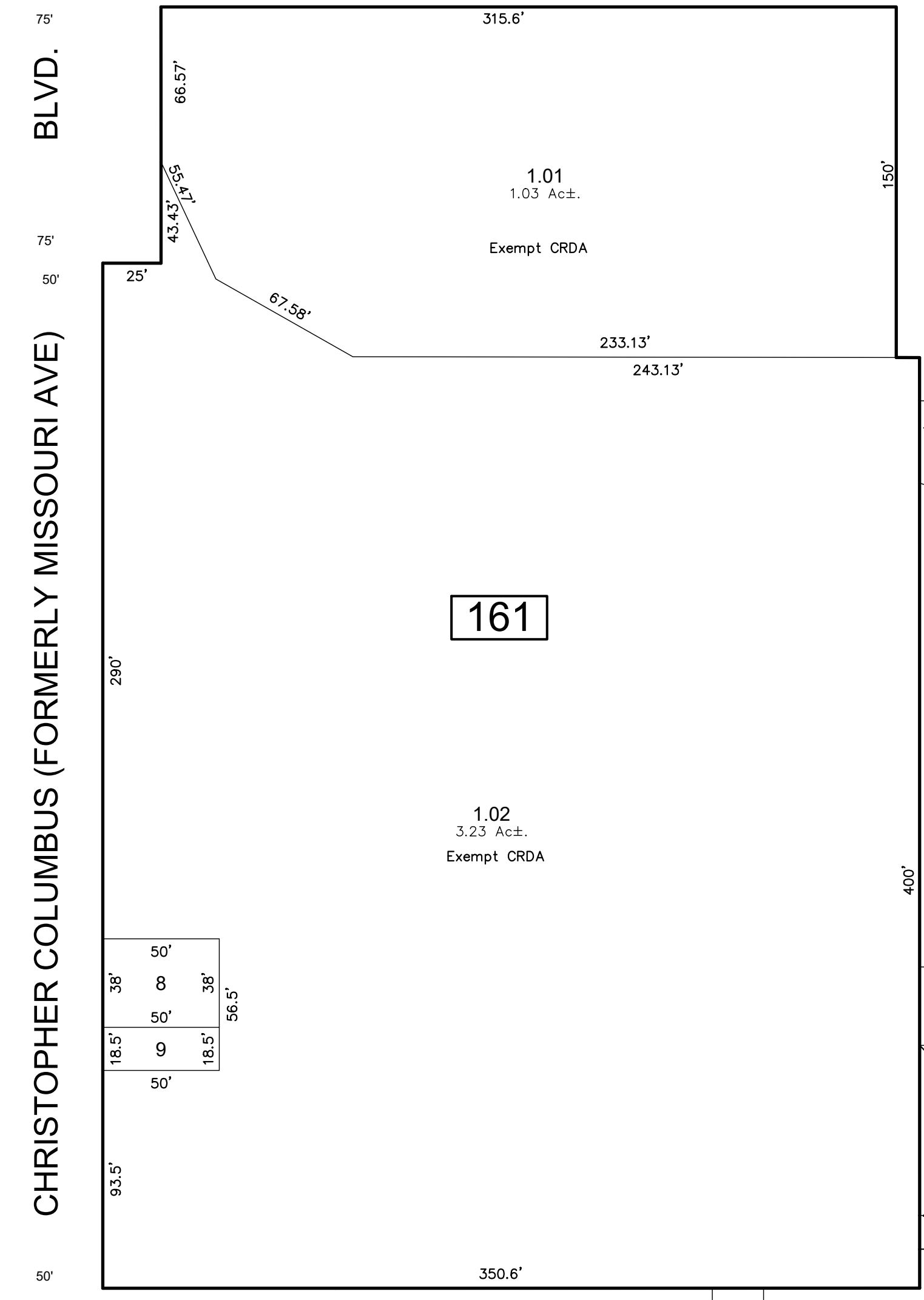
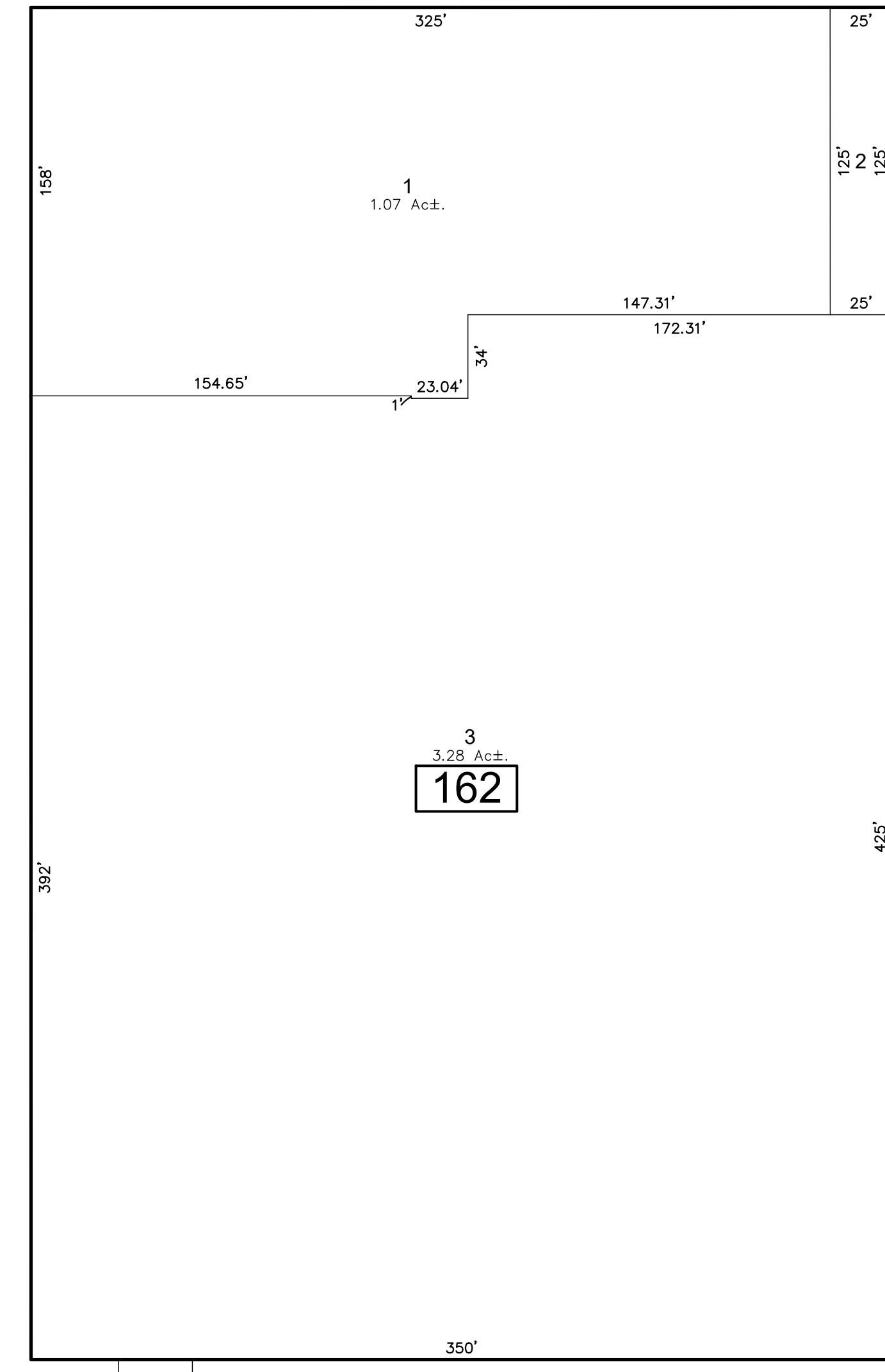
BLVD.
CHRISTOPHER COLUMBUS (FORMERLY MISSOURI AVE)

AVE
ARKANSAS

FLEMING AVE

MICHIGAN AVE

SHEET 29



*-Air Rights on Pacific Ave are defined on Sheet 7.

REVISIONS				
DATE	BY	LIC.NO	BLOCK	LOT

SHEET 7

SHEET 8

THIS SHEET HAS BEEN DRAWN USING COMPUTER AIDED DRAFTING/DESIGN (CADD)

THIS MAP HAS BEEN GIVEN A FORMAL CERTIFICATION BY THE DIVISION OF TAXATION ON NOVEMBER 25, 1997, SIGNED BY WILLIAM H. BLACK, CTA AND ASSIGNED SERIAL NUMBER 778

TAX MAP
CITY OF ATLANTIC CITY
 SCALE: 1" = 50'
 NEW JERSEY
JOSEPH M DOLAN, PLS, PP
 MUNICIPAL LAND SURVEYOR
 NEW JERSEY LICENSE NO. 23930
 OFFICE OF THE CITY ENGINEER
 603 CITY HALL
 ATLANTIC CITY, NEW JERSEY 08401

TO SHOW CONDITIONS AS OF MAY 2019
COA# 24GA27973300