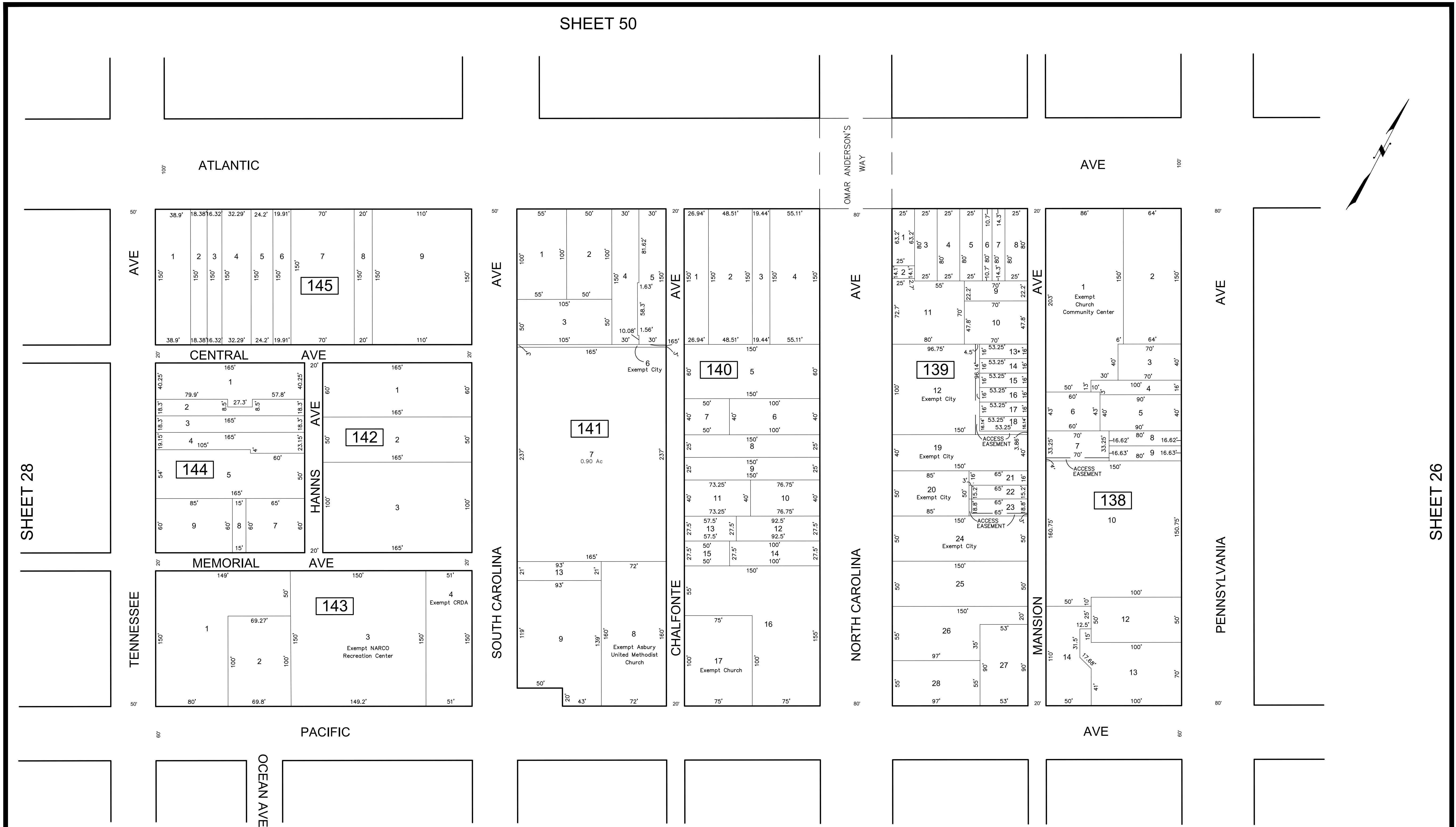


SHEET 50



THIS SHEET HAS BEEN DRAWN USING COMPUTER AIDED DRAFTING/DESIGN (CAD/D)

REVISIONS				
DATE	BY	LIC. NO.	BLOCK	LOT
03/2014	CHARLES A. ATKINSON-ARH	33994	138	10

**LEGEND:**

- \* - Exempt City Foreclosure Condo; Blk 143 Lots:  
101-105,202-205,207-210,212,213,301,302,305-310,313,  
402-410,412,413,501,502,507-510,512,604-613,706-709,  
805,807-809,901,904,908-910,912
- Blk 139; Lot 13 - Exempt City Foreclosure
- Blk 143; Lots 704, 905 - Exempt City Foreclosure
- Blk 143; Lot 311 - Exempt City Vacant

THIS MAP HAS BEEN GIVEN A FORMAL CERTIFICATION BY THE DIVISION OF TAXATION ON NOVEMBER 25, 1997, SIGNED BY WILLIAM H. BLACK, CTA AND ASSIGNED SERIAL NUMBER 778

**TAX MAP**  
**CITY OF ATLANTIC CITY**  
 ATLANTIC COUNTY, NEW JERSEY  
 SCALE: 1" = 50'  
**JOSEPH M DOLAN, PLS, PP**  
 MUNICIPAL LAND SURVEYOR  
 NEW JERSEY LICENSE NO. 23930  
 OFFICE OF THE CITY ENGINEER  
 603 CITY HALL  
 ATLANTIC CITY, NEW JERSEY 08401  
 TO SHOW CONDITIONS AS OF MAY 2019  
 COA# 24GA27973300