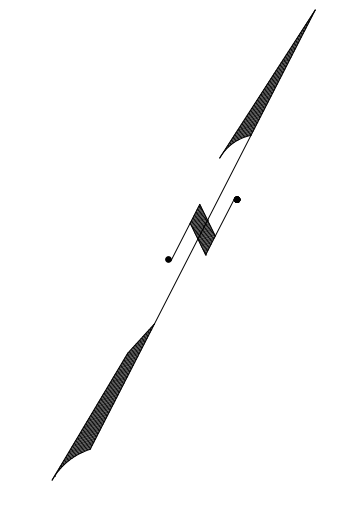
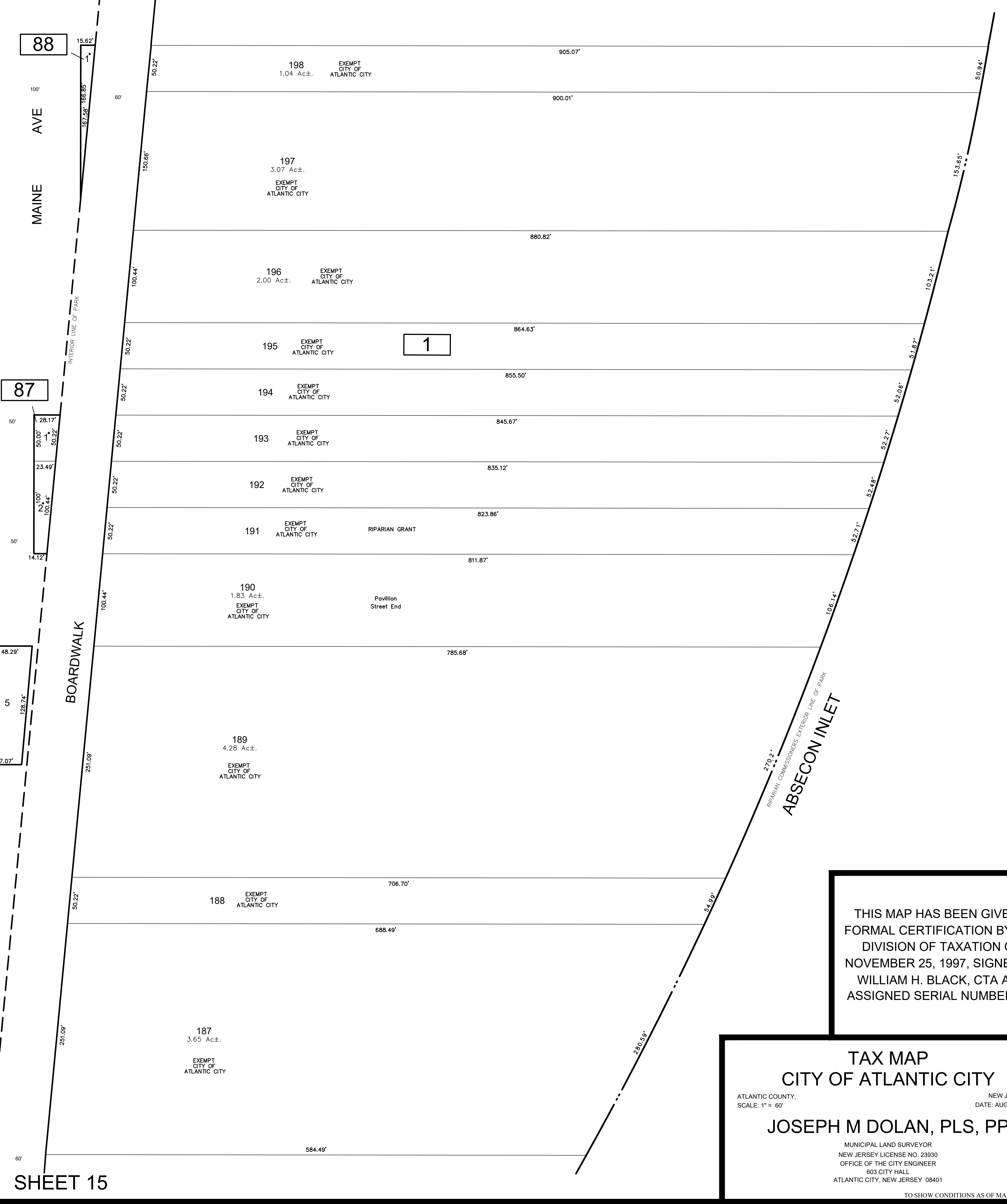
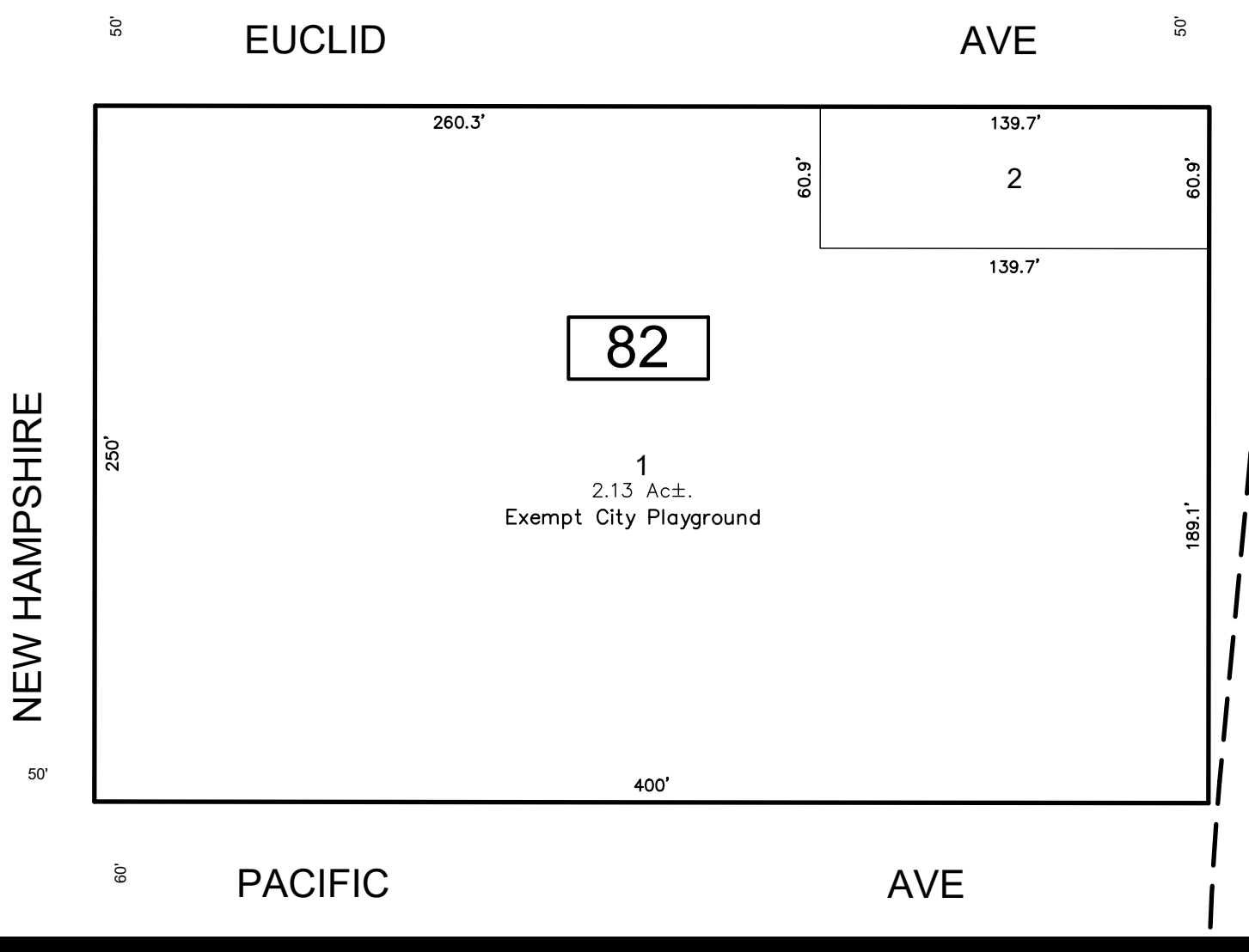
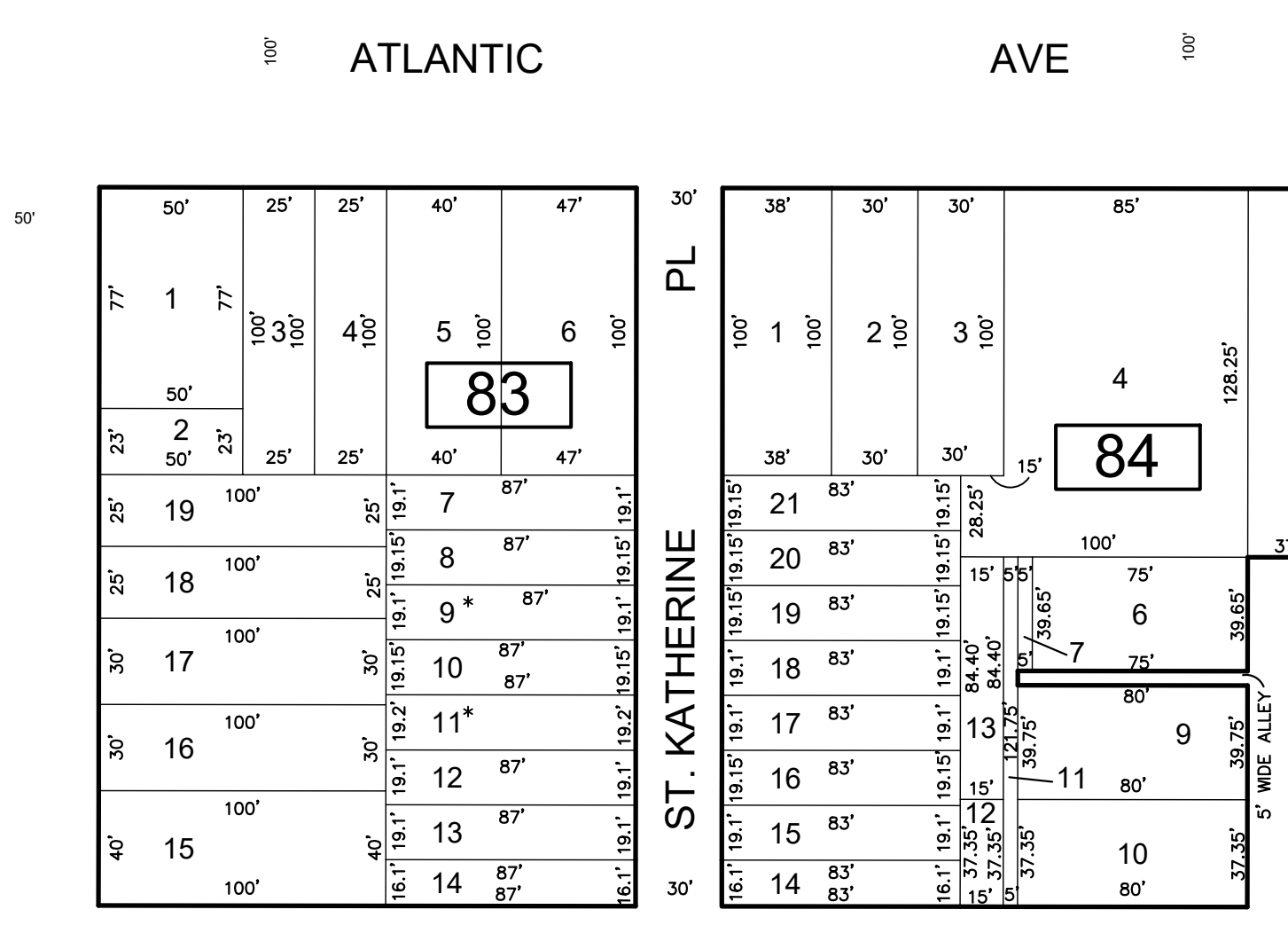
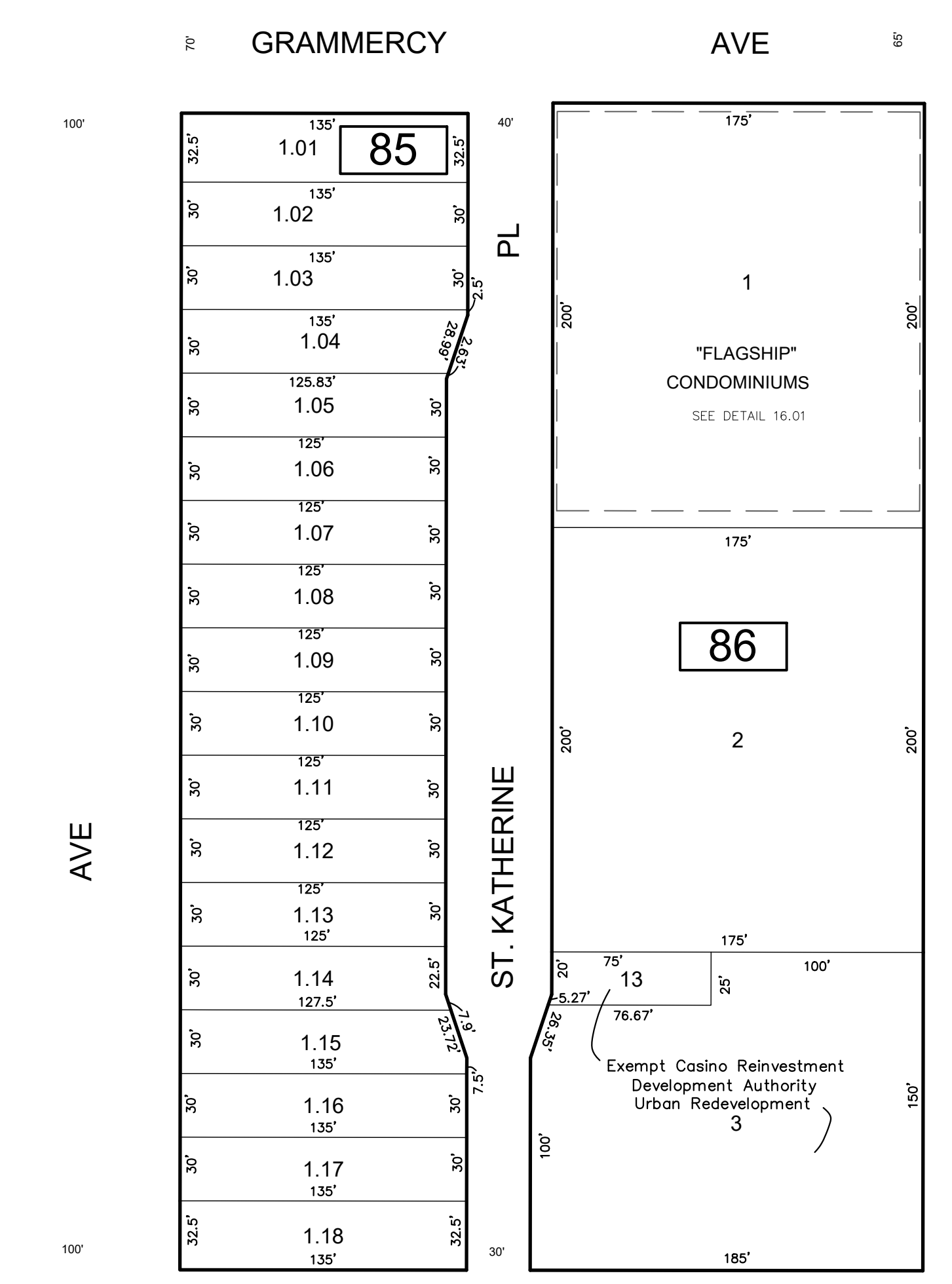


LEGEND:
 * - BLK 87; LOTS: 1,2 & BLK 88; LOT: 1 = Exempt City Vacant
 * - BLK 83; LOTS: 9,11 = Exempt City Foreclosure

SHEET 23



SHEET 24



THIS SHEET HAS BEEN DRAWN USING COMPUTER AIDED DRAFTING/DESIGN (CAD/D)

REVISIONS				
DATE	BY	LIC. NO.	BLOCK	LOT
09/2014	CHARLES A. ATKINSON	33994	82	1, 3-7
04/2109	ED CLAY	34842	84	8

THIS MAP HAS BEEN GIVEN A FORMAL CERTIFICATION BY THE DIVISION OF TAXATION ON NOVEMBER 25, 1997, SIGNED BY WILLIAM H. BLACK, CTA AND ASSIGNED SERIAL NUMBER 778

TAX MAP
CITY OF ATLANTIC CITY
 ATLANTIC COUNTY, NEW JERSEY
 SCALE: 1" = 60'
JOSEPH M DOLAN, PLS, PP
 MUNICIPAL LAND SURVEYOR
 NEW JERSEY LICENSE NO. 23930
 OFFICE OF THE CITY ENGINEER
 603 CITY HALL
 ATLANTIC CITY, NEW JERSEY 08401
 TO SHOW CONDITIONS AS OF MAY 2019
 COA# 24GA27973300