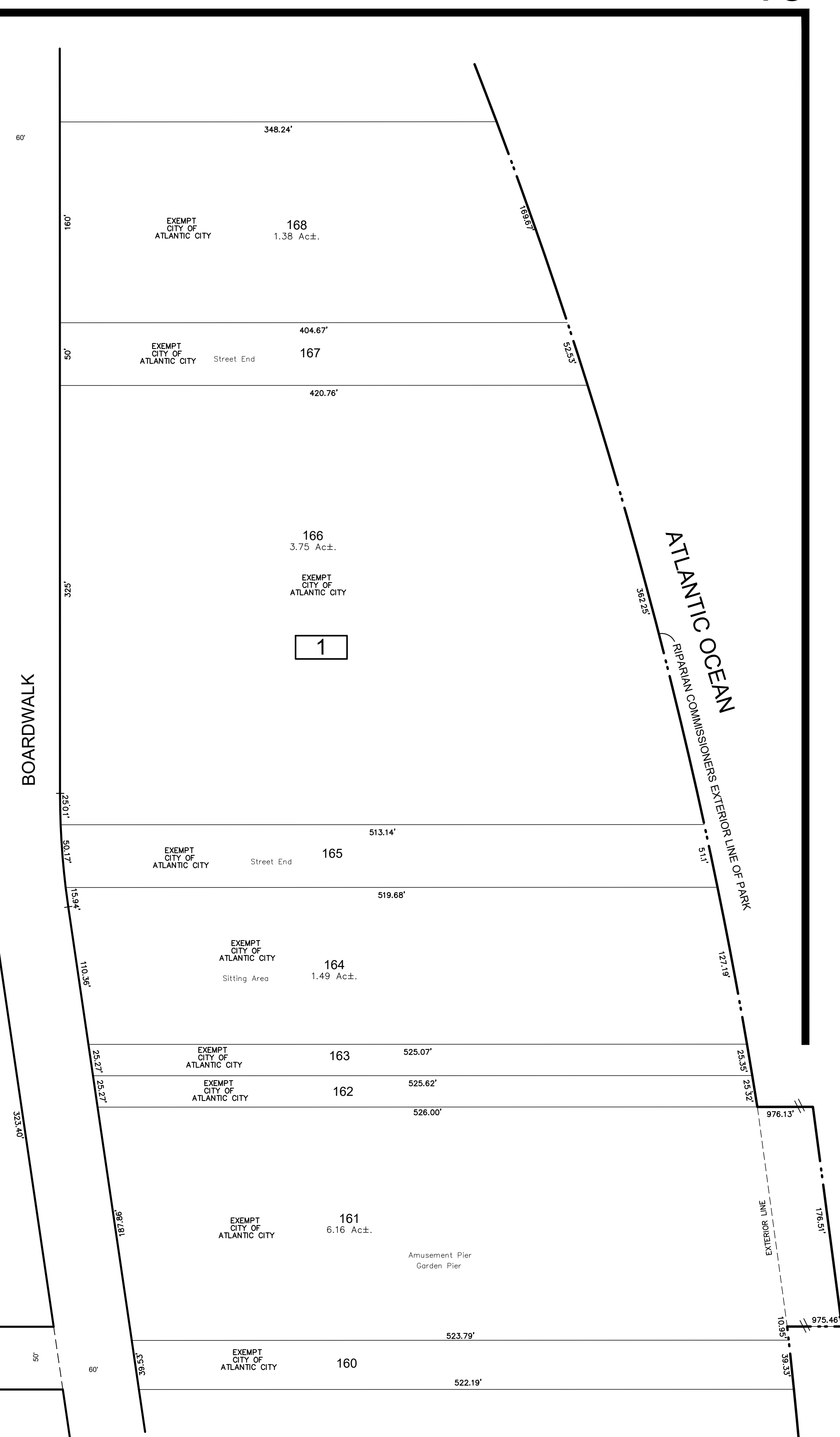
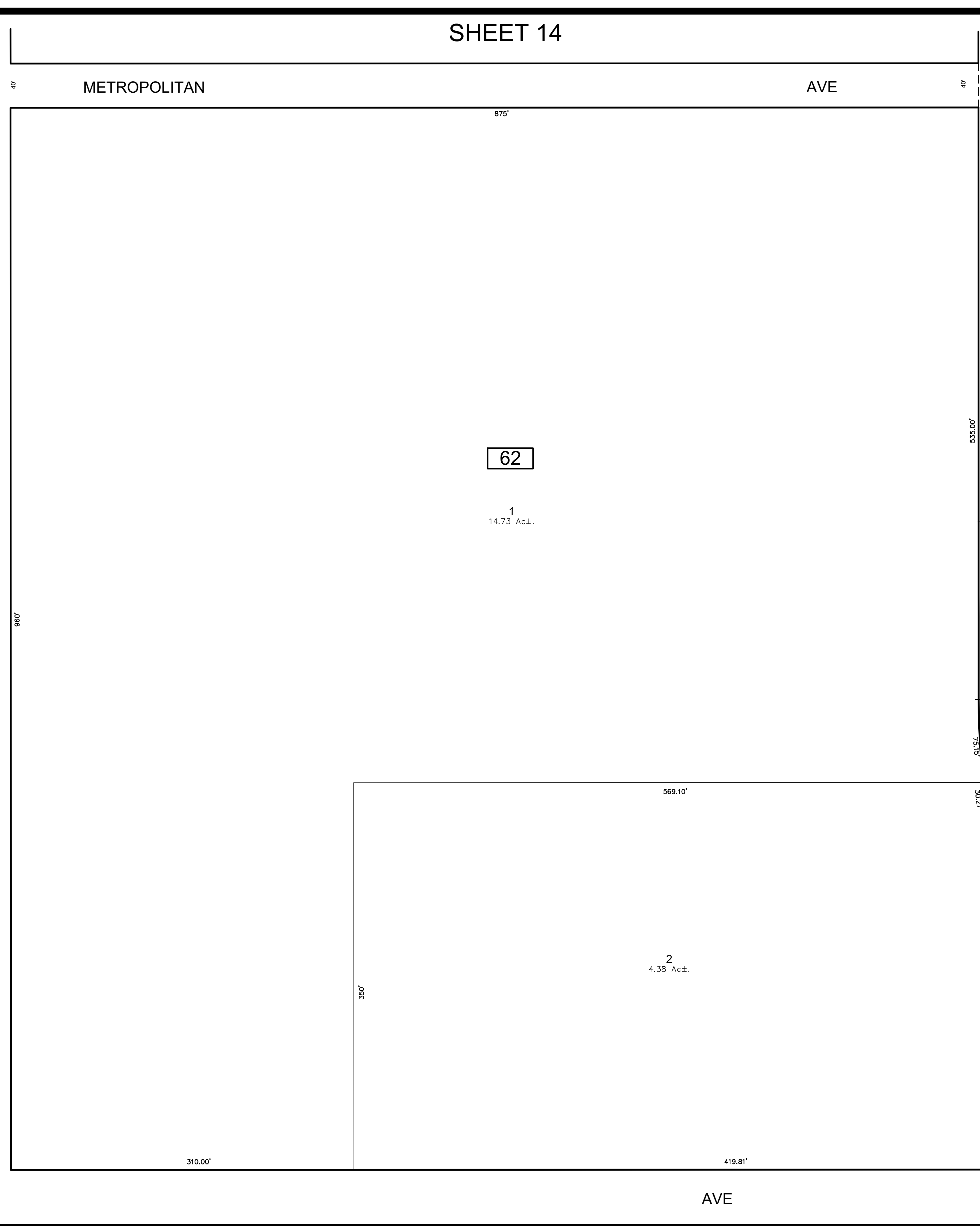
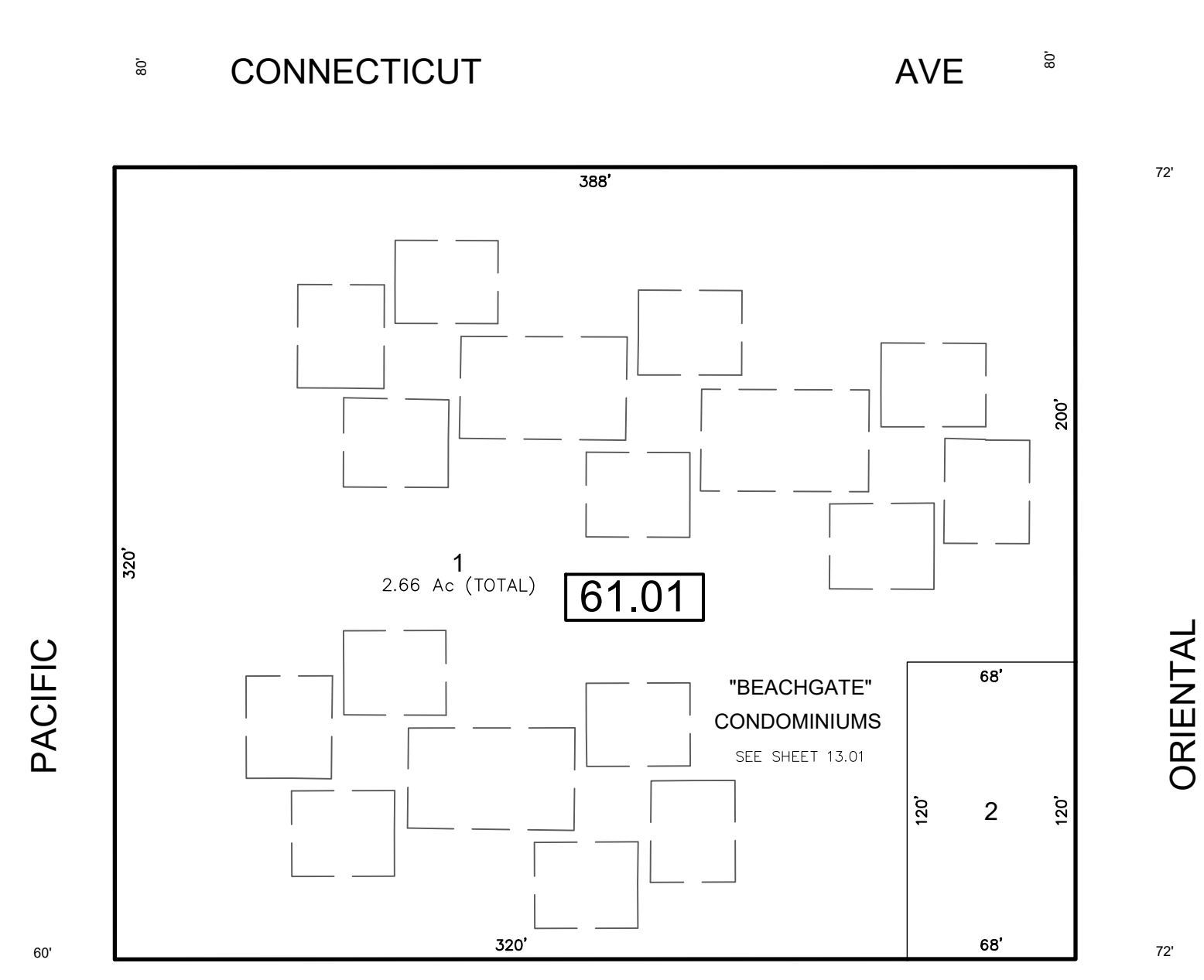
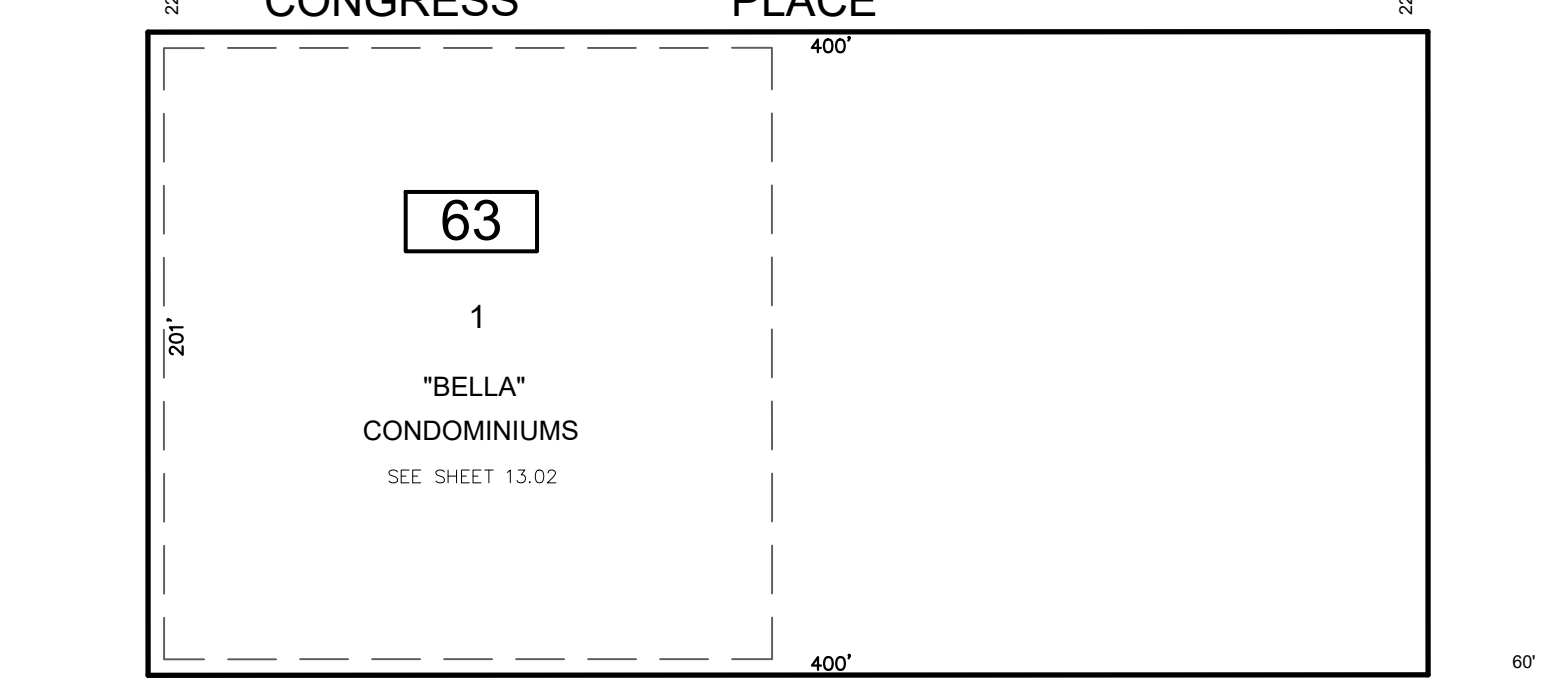
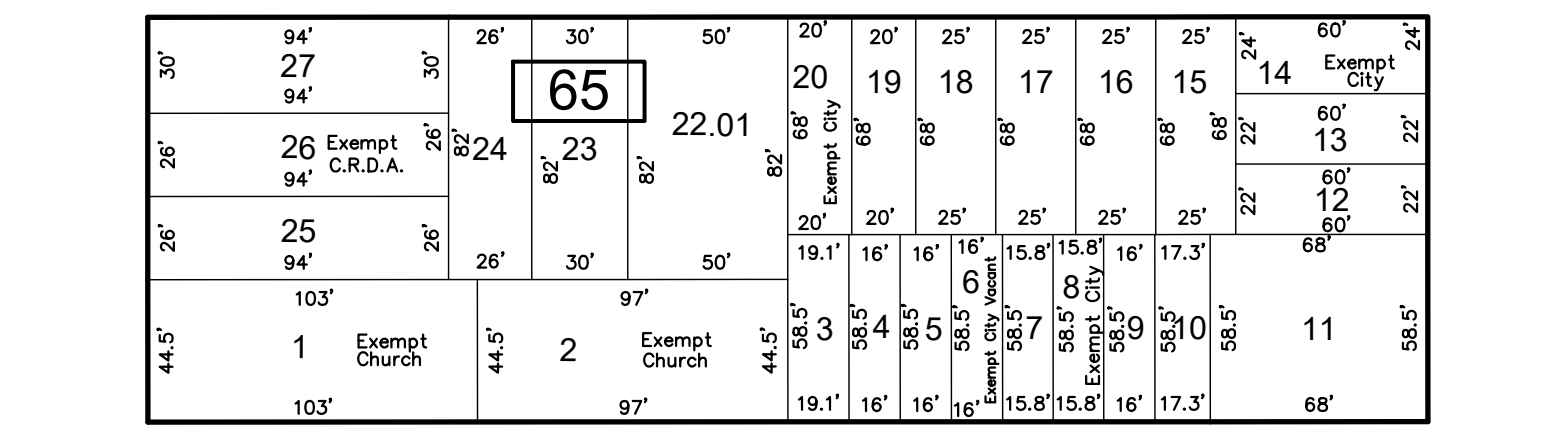
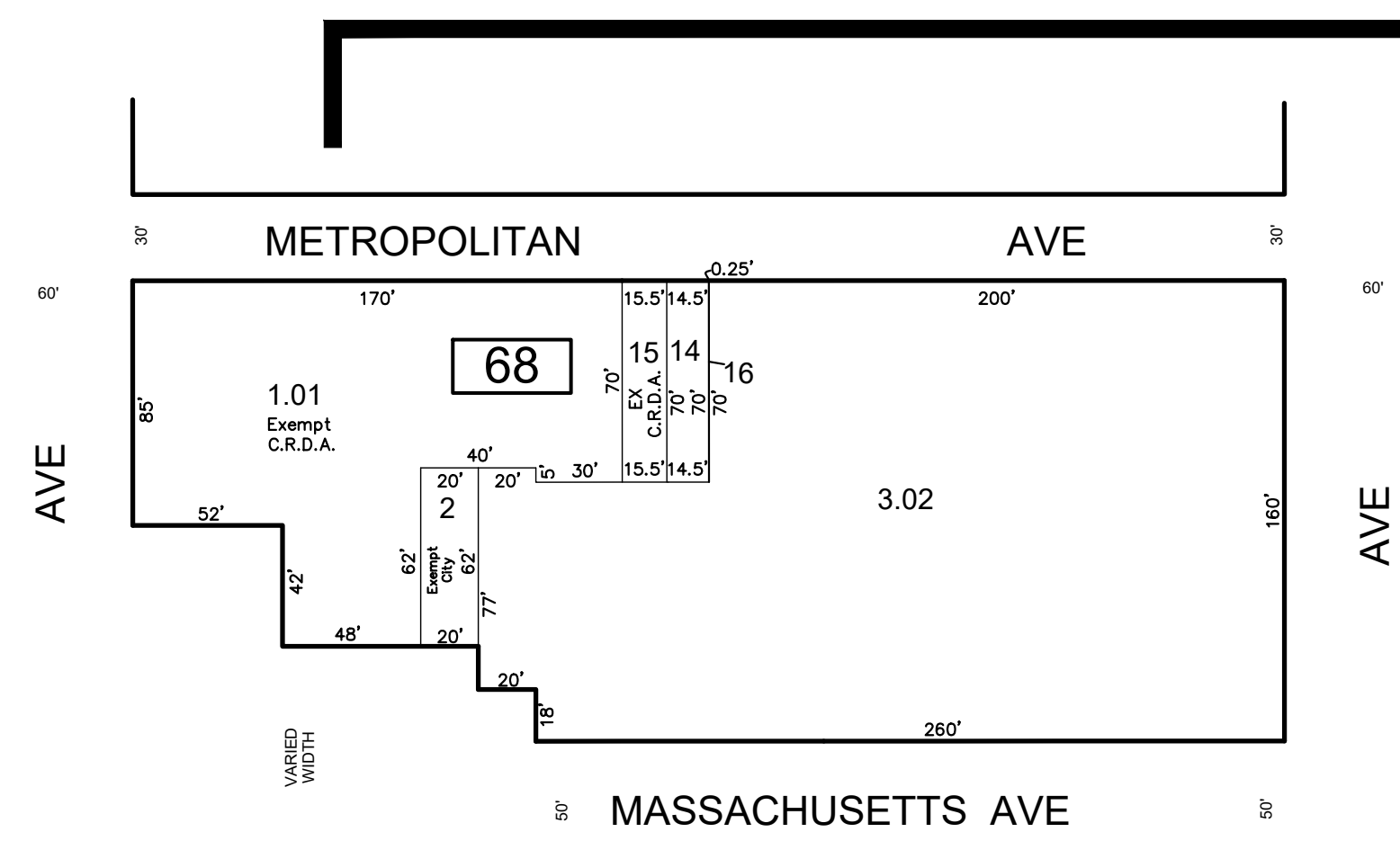


SHEET 14

SHEET24

SHEET25



REVISIONS				
DATE	BY	LIC NO	BLOCK	LOT
09/2014	CHARLES A. ATKINSON	33994	68	1
09/2014	CHARLES A. ATKINSON	33994	68	3-13
01/2016	ED CLAY - ARH	34842	65	21-22
03/2018	ED CLAY - ARH	34842	68	1.02,2,3,01
03/2019	ED CLAY - ARH	34842	1	160 & 161
04/2019	ED CLAY - ARH	34842	63	1-12

SHEET 12

THIS SHEET HAS BEEN DRAWN USING COMPUTER AIDED DRAFTING/DESIGN (CAD/D)

THIS MAP HAS BEEN GIVEN A FORMAL CERTIFICATION BY THE DIVISION OF TAXATION ON NOVEMBER 25, 1997, SIGNED BY WILLIAM H. BLACK, CTA AND ASSIGNED SERIAL NUMBER 778

TAX MAP
CITY OF ATLANTIC CITY
 ATLANTIC COUNTY, NEW JERSEY
 SCALE: 1" = 60'
JOSEPH M DOLAN, PLS, PP
 MUNICIPAL LAND SURVEYOR
 NEW JERSEY LICENSE NO. 23930
 OFFICE OF THE CITY ENGINEER
 603 CITY HALL
 ATLANTIC CITY, NEW JERSEY 08401
 TO SHOW CONDITIONS AS OF MAY 2019
 COA# 24GA27973300