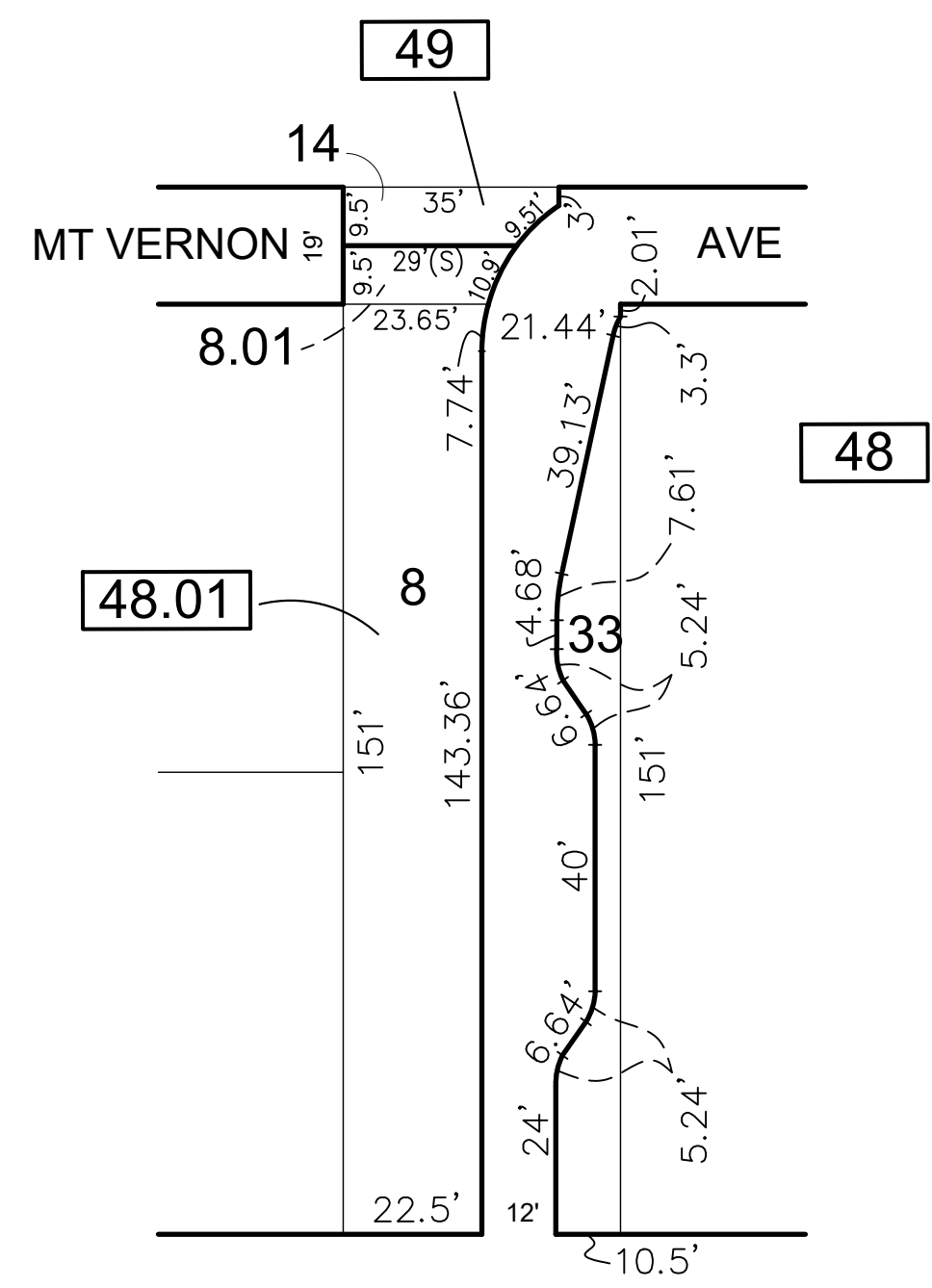
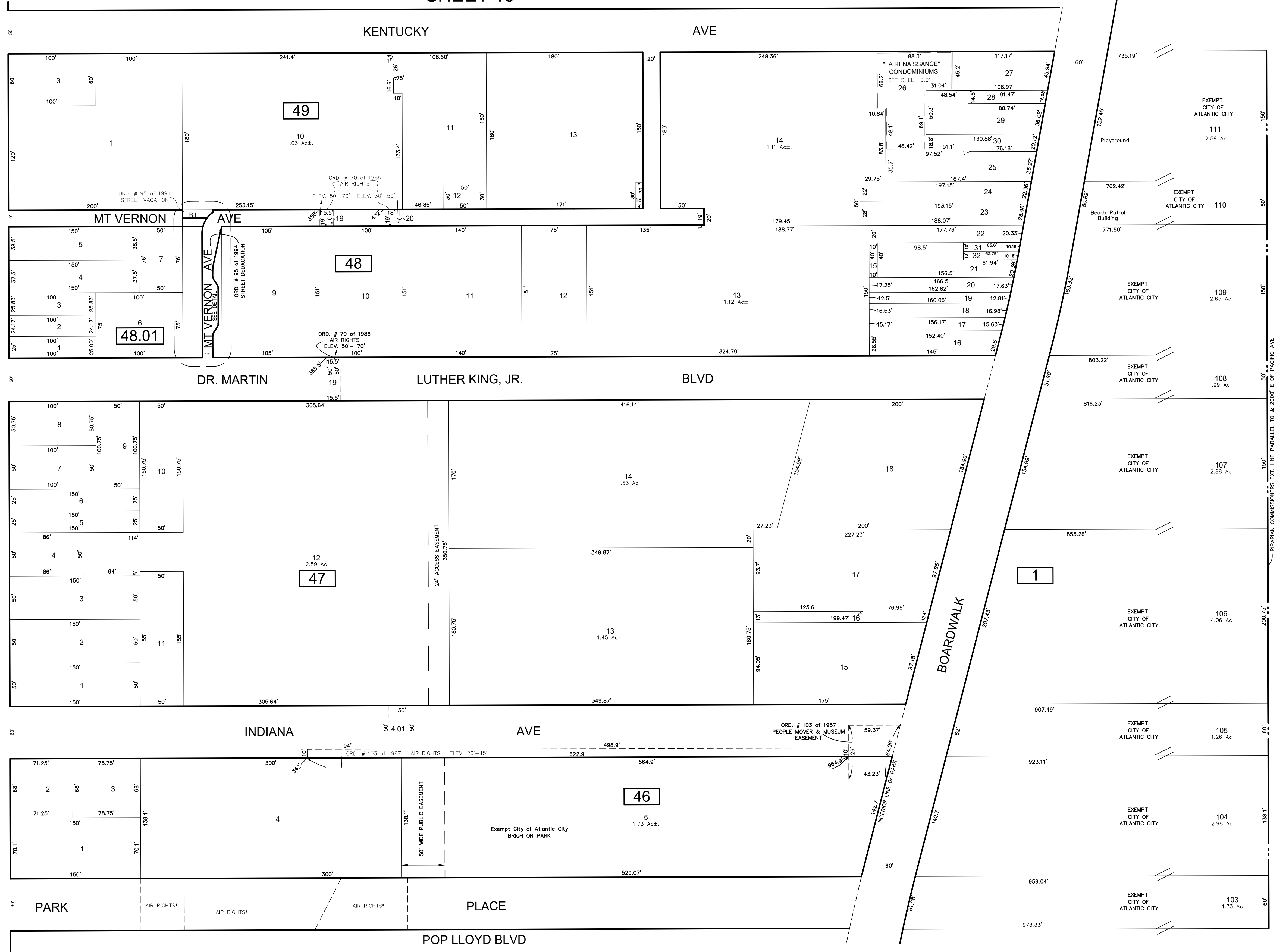


SHEET 10



LABEL INSET (SCALE: 1"=30')

SHEET 6



*-Air Rights on Park Pl are defined on Sheet 8.

THIS SHEET HAS BEEN DRAWN USING COMPUTER AIDED DRAFTING/DESIGN (CAD/D)

| REVISIONS | | | | |
|-----------|----|--------|-------|-----|
| DATE | BY | LIC.NO | BLOCK | LOT |
| | | | | |
| | | | | |
| | | | | |
| | | | | |
| | | | | |
| | | | | |
| | | | | |
| | | | | |
| | | | | |
| | | | | |

THIS MAP HAS BEEN GIVEN A FORMAL CERTIFICATION BY THE DIVISION OF TAXATION ON NOVEMBER 25, 1997, SIGNED BY WILLIAM H. BLACK, CTA AND ASSIGNED SERIAL NUMBER 778

TAX MAP
CITY OF ATLANTIC CITY
 ATLANTIC COUNTY, NEW JERSEY
 SCALE: 1" = 60'
JOSEPH M DOLAN, PLS, PP
 MUNICIPAL LAND SURVEYOR
 NEW JERSEY LICENSE NO. 23930
 OFFICE OF THE CITY ENGINEER
 603 CITY HALL
 ATLANTIC CITY, NEW JERSEY 08401
 TO SHOW CONDITIONS AS OF MAY 2019
 COA# 24GA27973300

SHEET 8