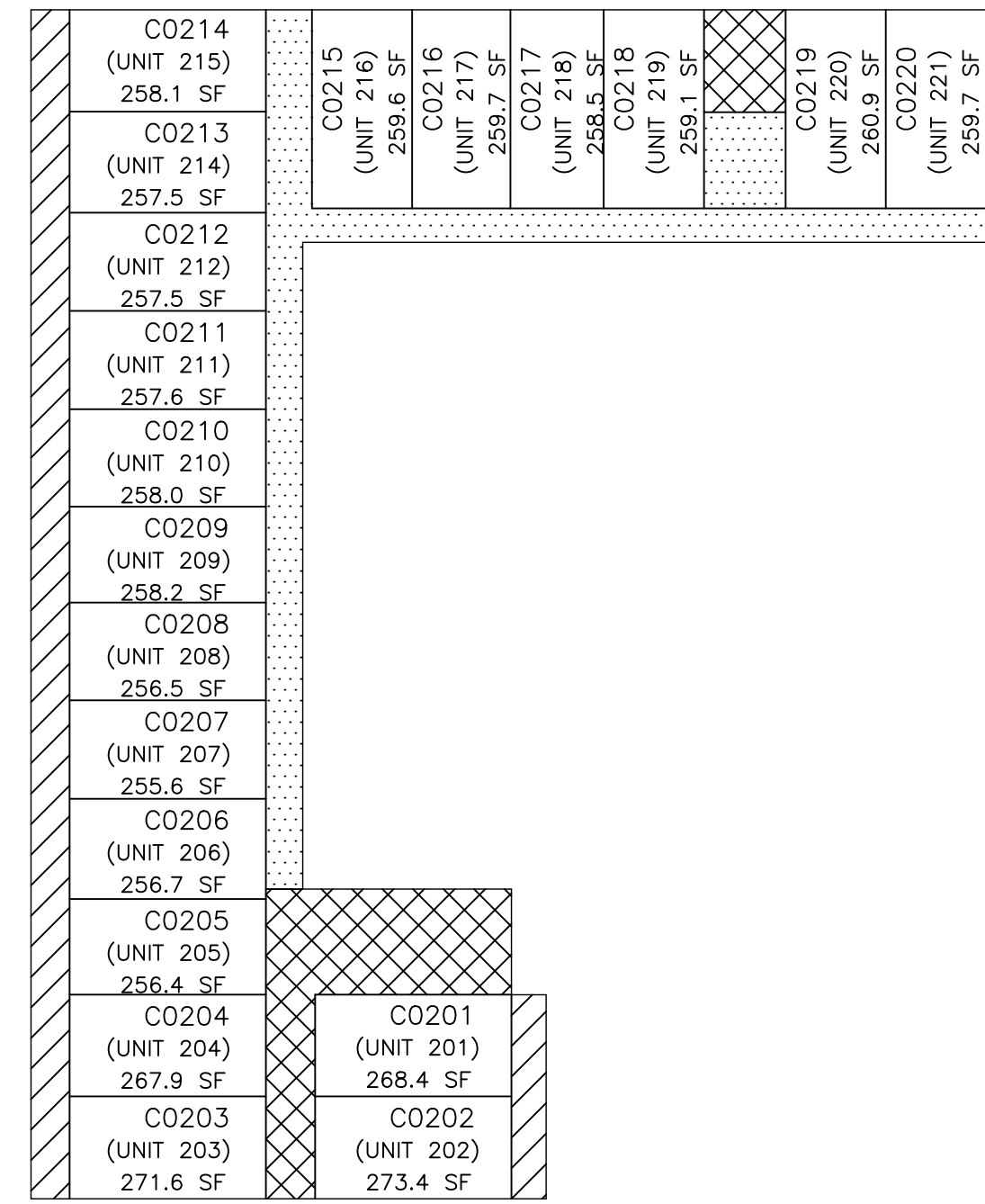
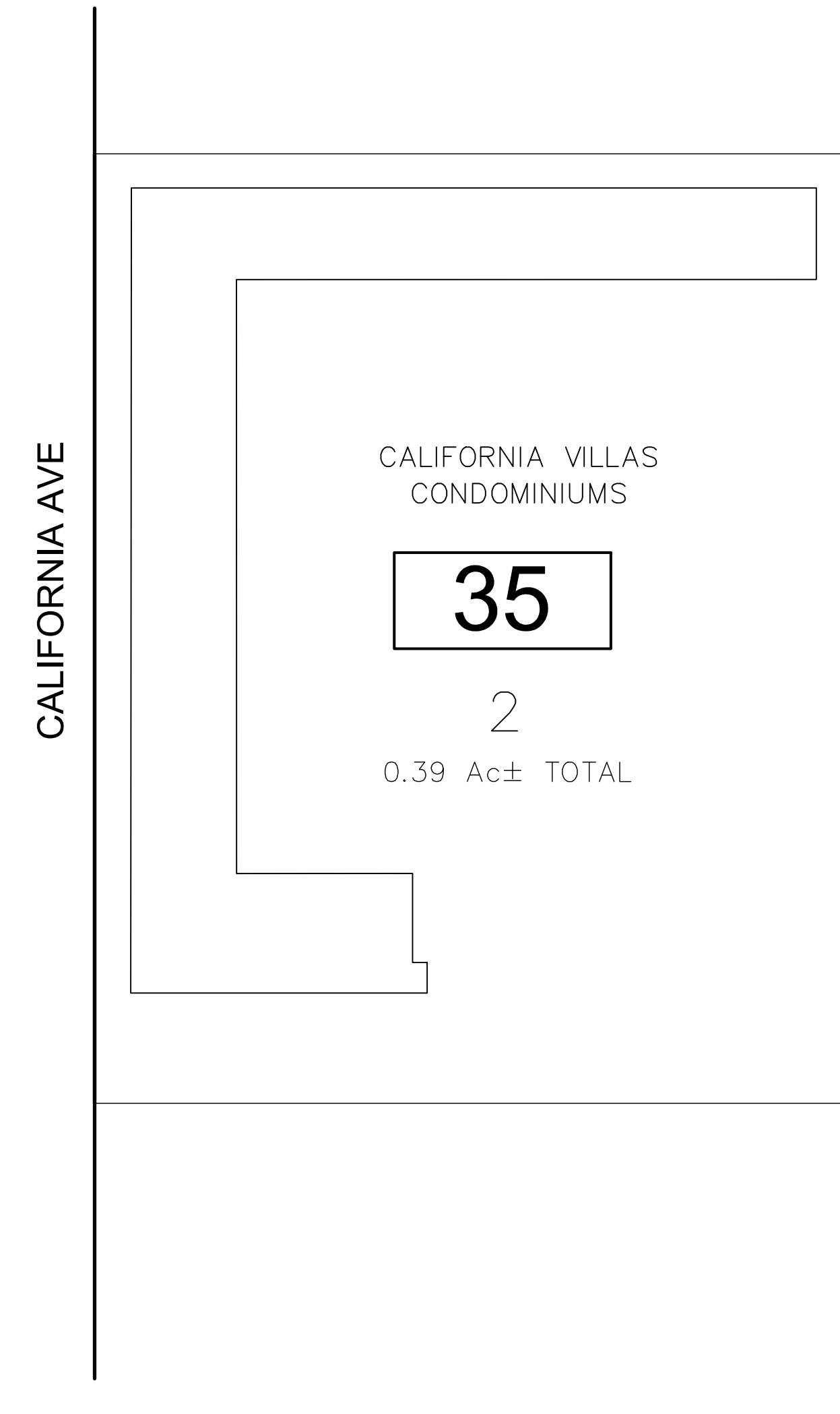
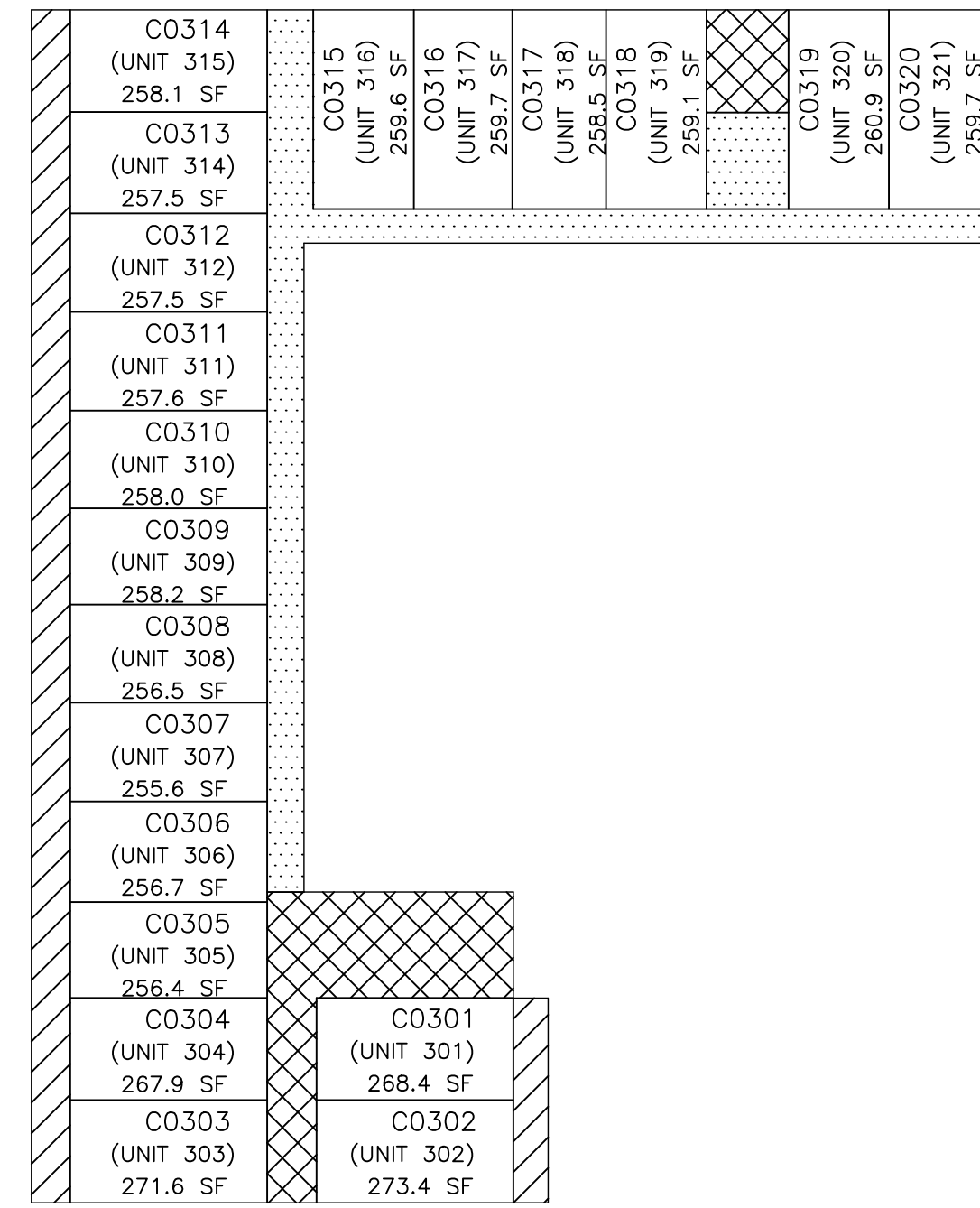


"CALIFORNIA VILLAS"  
CONDOMINIUM  
BLOCK 35 LOT 2

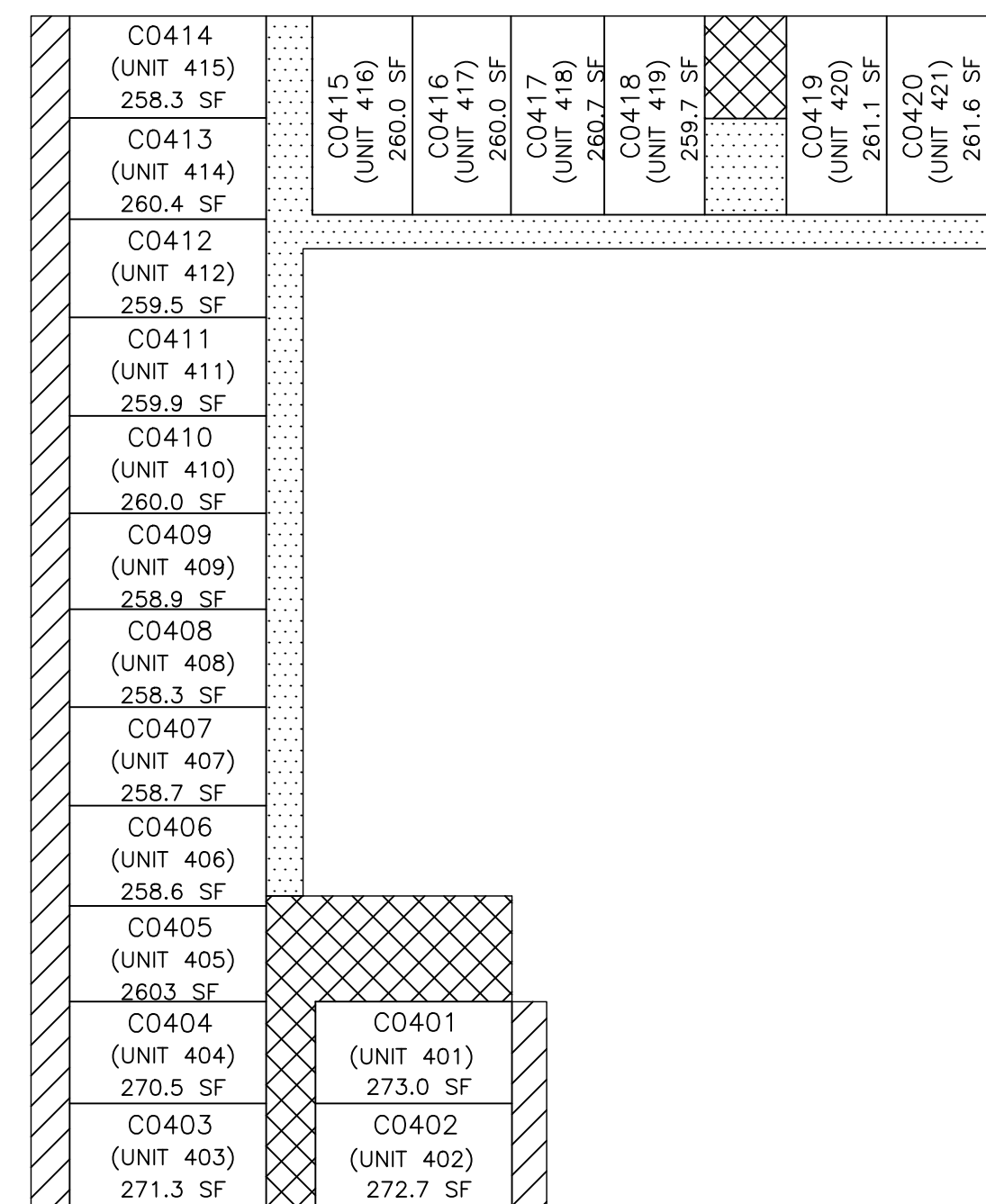
1st FLOOR = MECHANICAL/STORAGE/LOBBY



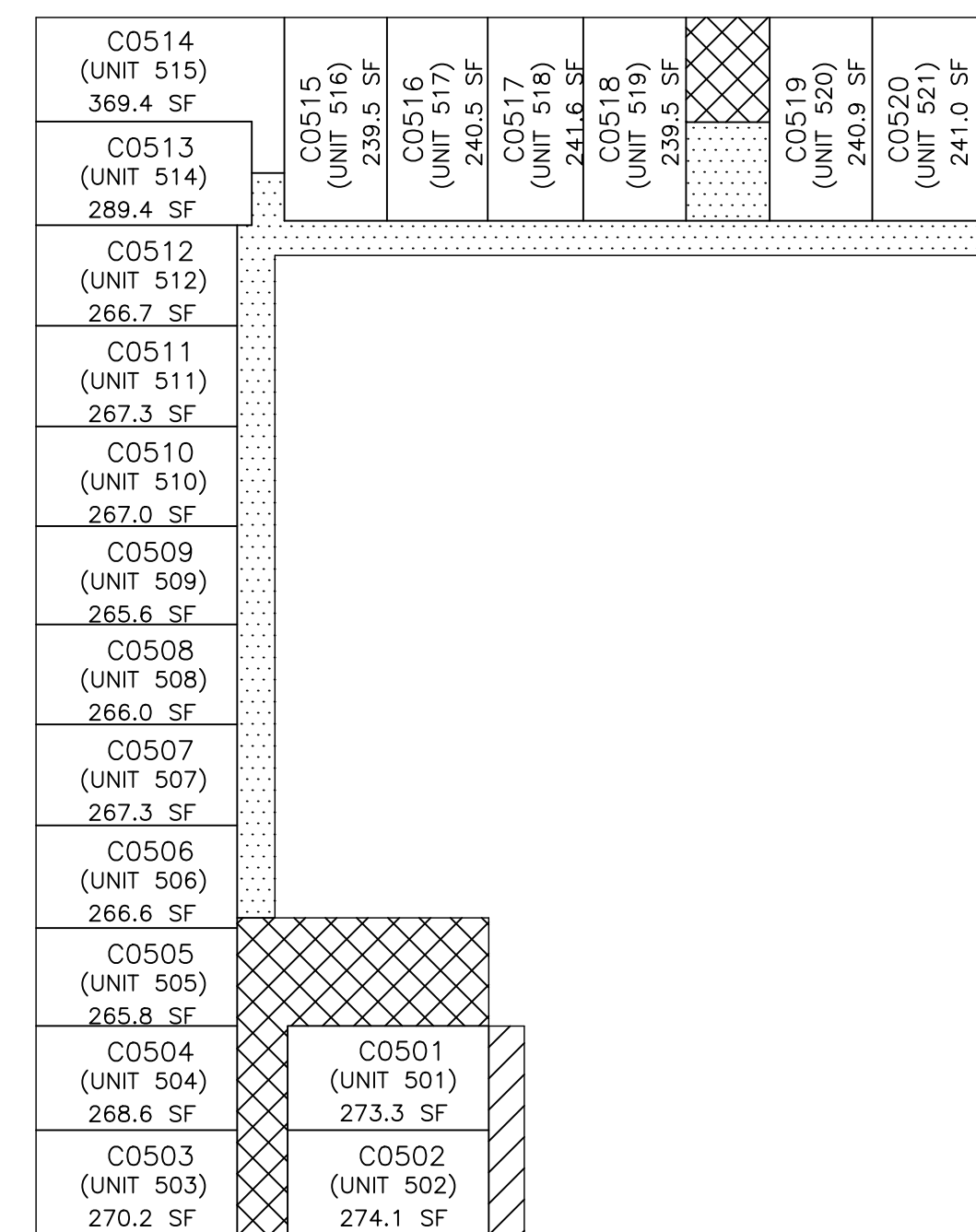
2ND FLOOR



3RD FLOOR



4TH FLOOR



5TH FLOOR

- ENCLOSED COMMON ELEMENT
- LIMITED COMMON ELEMENT
- COMMON ELEMENT

NOTE: All units are exempt and city owned with the exception of Units... C0208, C0209, C0302, C0318, C0319, C0414, & C0415

REVISIONS				
DATE	BY	LIC. NO.	BLOCK	LOT

THIS MAP HAS BEEN GIVEN A FORMAL CERTIFICATION BY THE DIVISION OF TAXATION ON NOVEMBER 25, 1997, SIGNED BY WILLIAM H. BLACK, CTA AND ASSIGNED SERIAL NUMBER 778

**TAX MAP**  
**CITY OF ATLANTIC CITY**  
ATLANTIC COUNTY, NEW JERSEY  
NOT TO SCALE  
**JOSEPH M DOLAN, PLS, PP**  
MUNICIPAL LAND SURVEYOR  
NEW JERSEY LICENSE NO. 23930  
OFFICE OF THE CITY ENGINEER  
603 CITY HALL  
ATLANTIC CITY, NEW JERSEY 08401