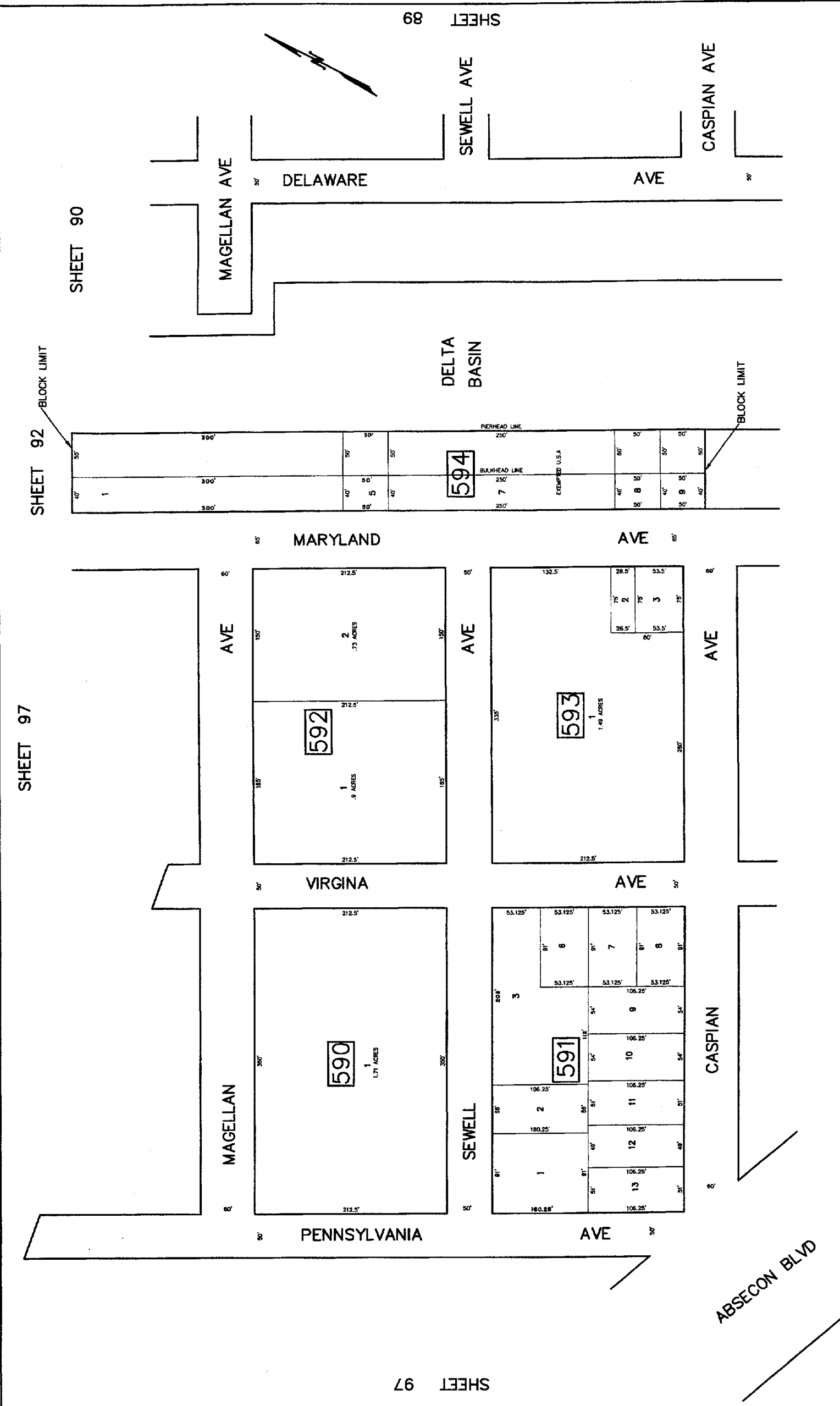


**TAX MAP**  
 CITY OF ATLANTIC CITY  
 ATLANTIC COUNTY, NEW JERSEY  
 SCALE: 1" = 50'  
 DATE: AUG 1995  
**ROBERT BADGER**  
 JUNIOR, LAND SURVEYOR  
 NEW JERSEY LICENSE NO. 10848  
 OFFICE OF THE CITY ENGINEER  
 ATLANTIC CITY, NEW JERSEY 08401

NEW JERSEY DEPARTMENT OF THE TREASURY  
 DIVISION OF TAXATION  
 PROPERTY ADMINISTRATION  
 APPROVED AS TO THE TECHNICAL ASPECTS OF THE MAP  
 FOR THE DIRECTOR, DIVISION OF TAXATION  
 [Signature]  
 DATE: NOV 25 1997 SERIAL NO. 778



SHEET 97

SHEET 90

SHEET 97

SHEET 89

SHEET 87

REVISIONS		
DATE	REVISIONS	BY
5/5/1998	BLK 594, CORNSL 5,501 & 6,601 INTO 5,501	CMH
7/26/1998	BLK 591, CORNSL 1 & 14 INTO 1	CMH
7/25/1998	BLK 591, CORNSL 3,4 & 5 INTO 3	CMH
3/23/1999	BLK 594, DELETED RIP LOT No.5	CMH
9/26/2002	BLK 594, CORNSL 1-4 INTO 1	CMH

ABSECON BLVD