

REVISIONS

DATE	REVISIONS	BY
7/26/1998	BLK 530, CONSOL 4 & 5 INTO 4	DWP

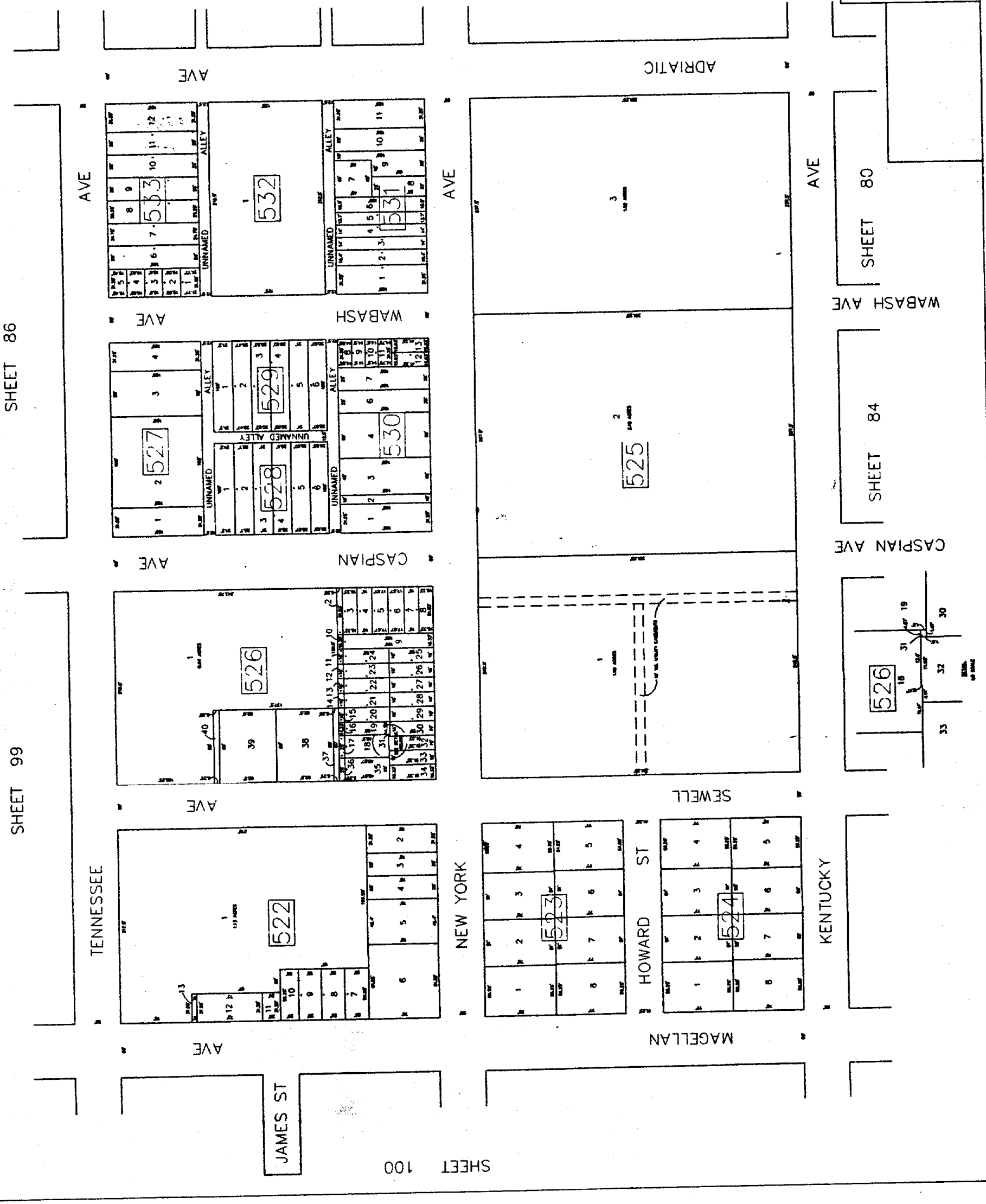
SHEET 79



SHEET 86

SHEET 99

SHEET 100



TAX MAP
 CITY OF ATLANTIC CITY
 ATLANTIC COUNTY, NEW JERSEY
 SCALE: 1" = 50'
 DATE: AUG 1995
 ROBERT BADGER
 PLANNING AND ENGINEERING
 100 JERSEY AVENUE, 10TH FLOOR
 OFFICE OF THE CITY ENGINEER
 ATLANTIC CITY, NEW JERSEY 08401

SHEET 80

SHEET 84

