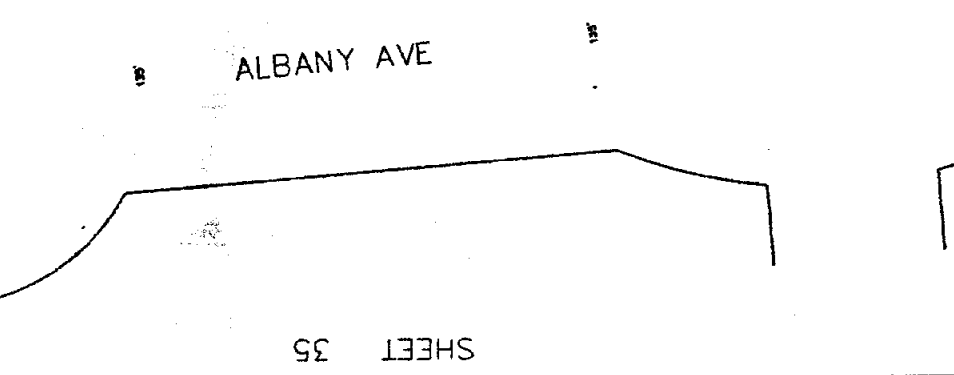
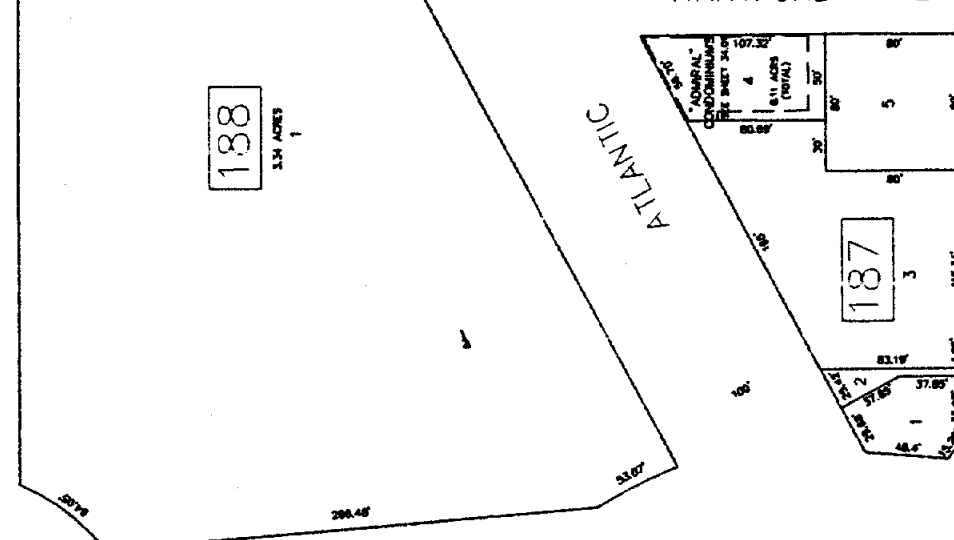
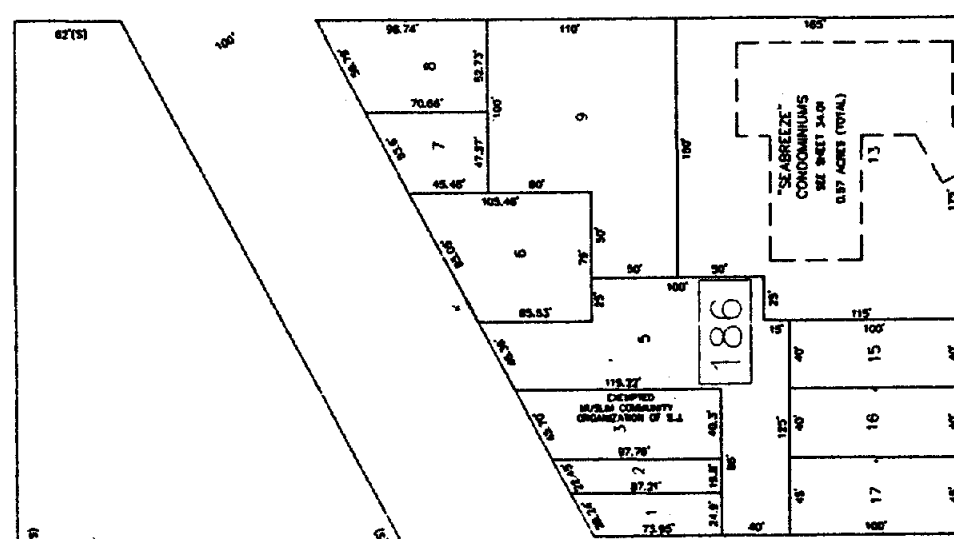
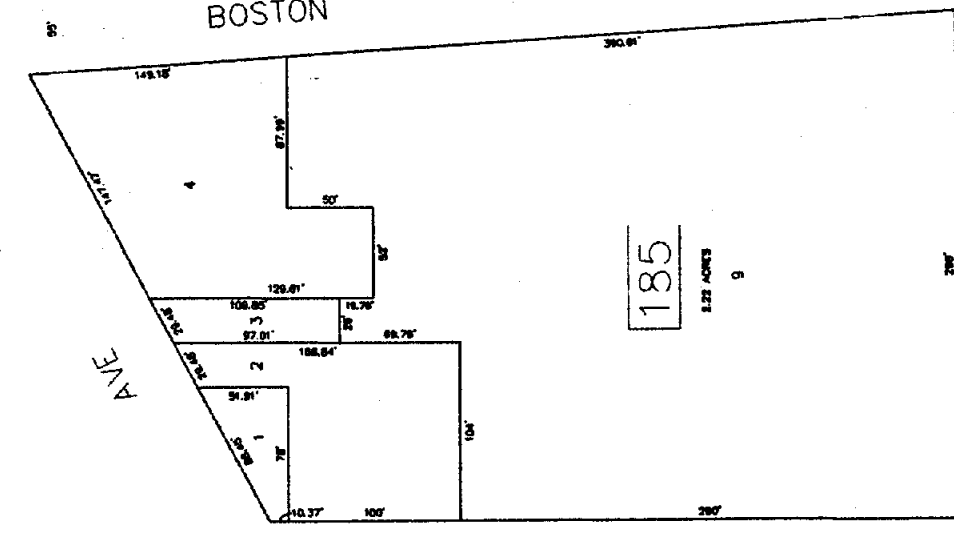
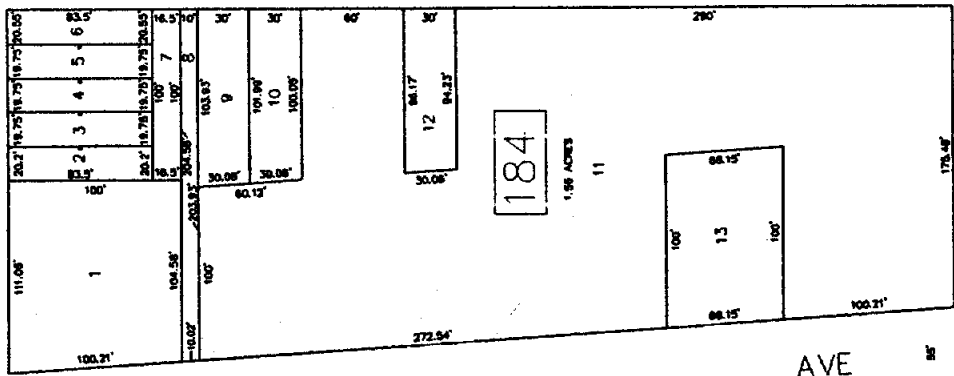


SHEET 43

CAPTAIN JOHN A. O'DONNELL PARKWAY

SHEET 35

SHEET 33



TAX MAP
 CITY OF ATLANTIC CITY
 ATLANTIC COUNTY, NEW JERSEY
 DATE: AUG 1995
 SCALE: 1" = 50'
 ROBERT BADGER
 PLANNING AND SURVEYING
 1000 JERSEY AVENUE, SUITE 1000
 ATLANTIC CITY, NJ 08401

REVISIONS	
DATE	BY
4/1/1998	DWP
7/9/1998	DWP
7/9/1998	DWP
1/19/1999	DWP
1/19/1999	DWP

SHEET 3 SHEET 4