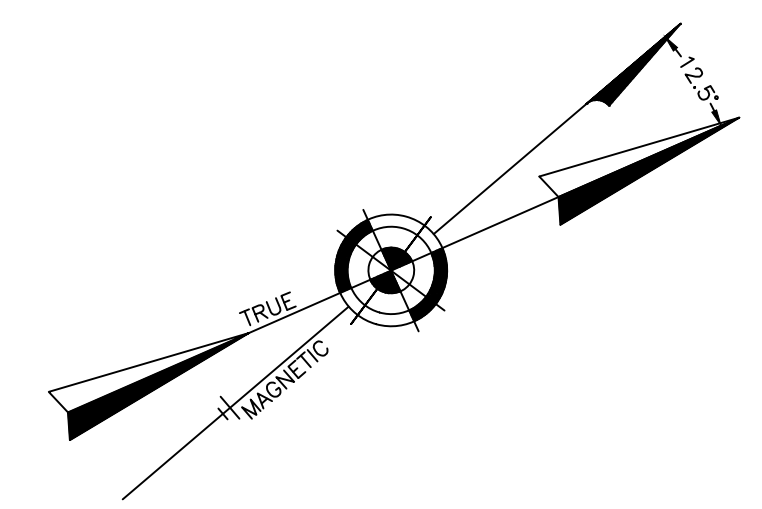


REVISIONS		
11-27-2012	CRAIG F. REMINGTON	23924
7-25-2014	CRAIG F. REMINGTON	23924
7-25-2019	CHARLES E. ADAMSON	42627

NOTE:
 THIS SHEET HAS BEEN REDRAWN USING COMPUTER AIDED DRAFTING/DESIGN (CADD) BASED ON THE MAP PREPARED BY: RONALD J. PRICE, N.J. LICENSE NO. 13901, NORTHFIELD, NEW JERSEY.



SHEET 29

BUILDING NO. 1 TWO STORY UNITS																					
23'	24'	24'	24'	24'	24'	24'	24'	24'	24'	24'	24'	23'	24'	24'	24'	24'	24'	24'	24'	24'	24'
C1A	C1B	C1C	C1D	C1E	C1F	C1G	C1H	C1I	C1J	C1K	C1L	C1M	C1N	C1O	C1P	C1Q	C1R	C1S	C1T	C1U	C1V
1104 S.F.	1104 S.F.	1104 S.F.	1104 S.F.	1104 S.F.	1104 S.F.	1104 S.F.	1104 S.F.	1104 S.F.	1104 S.F.	1104 S.F.	1104 S.F.	1104 S.F.	1104 S.F.	1104 S.F.	1104 S.F.	1104 S.F.	1104 S.F.	1104 S.F.	1104 S.F.	1104 S.F.	1104 S.F.

BUILDING NO. 2 TWO STORY UNITS																					
23'	24'	24'	24'	24'	24'	24'	24'	24'	24'	24'	24'	23'	24'	24'	24'	24'	24'	24'	24'	24'	24'
C2K	C2L	C2M	C2N	C2O	C2P	C2Q	C2R	C2S	C2T	C2U	C2V	C2W	C2X	C2Y	C2Z	C2A	C2B	C2C	C2D	C2E	C2F
1104 S.F.	1104 S.F.	1104 S.F.	1104 S.F.	1104 S.F.	1104 S.F.	1104 S.F.	1104 S.F.	1104 S.F.	1104 S.F.	1104 S.F.	1104 S.F.	1104 S.F.	1104 S.F.	1104 S.F.	1104 S.F.	1104 S.F.	1104 S.F.	1104 S.F.	1104 S.F.	1104 S.F.	1104 S.F.

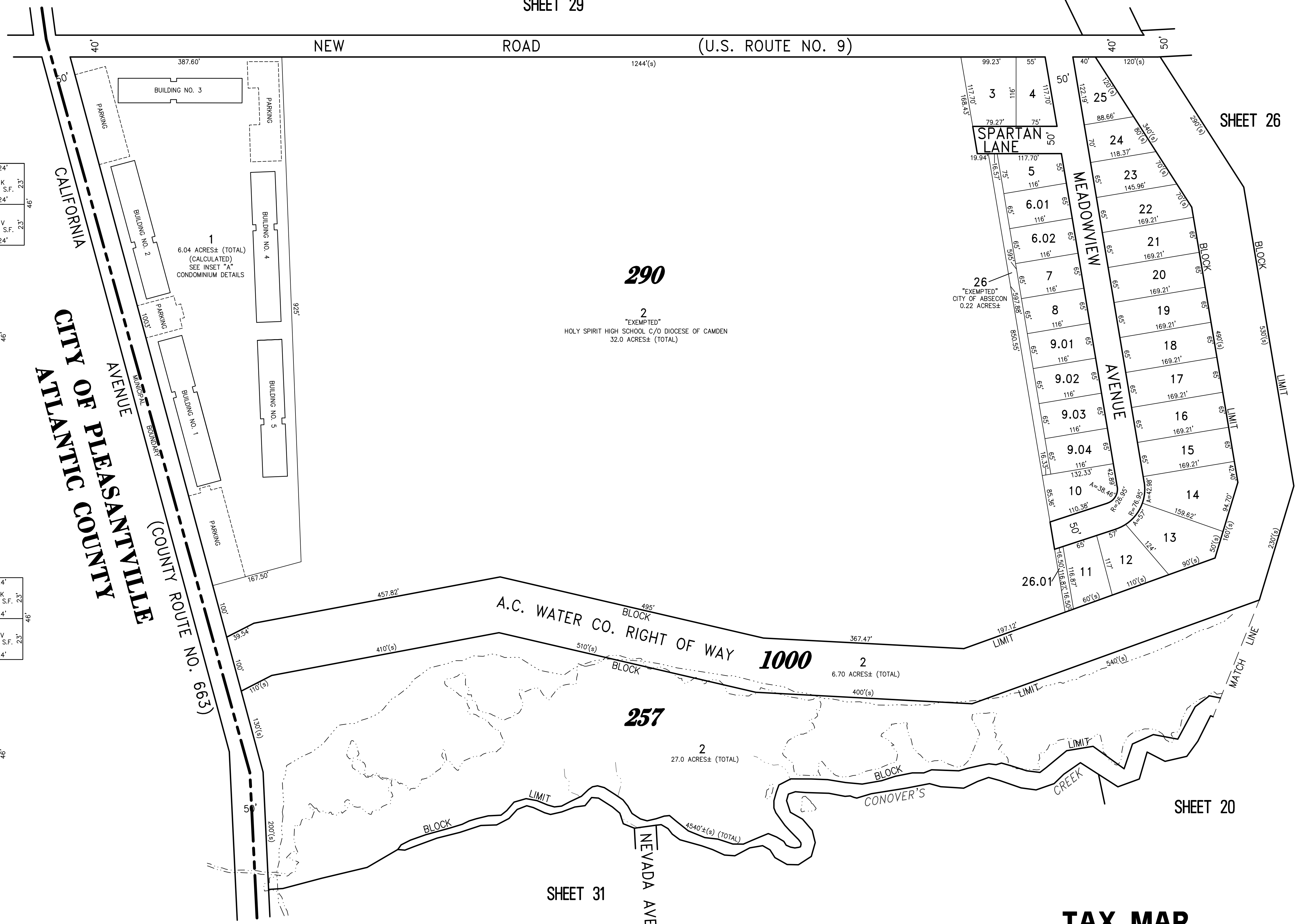
BUILDING NO. 3 TWO STORY UNITS																					
23'	24'	24'	24'	24'	24'	24'	24'	24'	24'	24'	24'	23'	24'	24'	24'	24'	24'	24'	24'	24'	24'
C3A	C3B	C3C	C3D	C3E	C3F	C3G	C3H	C3I	C3J	C3K	C3L	C3M	C3N	C3O	C3P	C3Q	C3R	C3S	C3T	C3U	C3V
1104 S.F.	1104 S.F.	1104 S.F.	1104 S.F.	1104 S.F.	1104 S.F.	1104 S.F.	1104 S.F.	1104 S.F.	1104 S.F.	1104 S.F.	1104 S.F.	1104 S.F.	1104 S.F.	1104 S.F.	1104 S.F.	1104 S.F.	1104 S.F.	1104 S.F.	1104 S.F.	1104 S.F.	1104 S.F.

BUILDING NO. 4 TWO STORY UNITS																					
23'	24'	24'	24'	24'	24'	24'	24'	24'	24'	24'	24'	23'	24'	24'	24'	24'	24'	24'	24'	24'	24'
C4A	C4B	C4C	C4D	C4E	C4F	C4G	C4H	C4I	C4J	C4K	C4L	C4M	C4N	C4O	C4P	C4Q	C4R	C4S	C4T	C4U	C4V
1104 S.F.	1104 S.F.	1104 S.F.	1104 S.F.	1104 S.F.	1104 S.F.	1104 S.F.	1104 S.F.	1104 S.F.	1104 S.F.	1104 S.F.	1104 S.F.	1104 S.F.	1104 S.F.	1104 S.F.	1104 S.F.	1104 S.F.	1104 S.F.	1104 S.F.	1104 S.F.	1104 S.F.	1104 S.F.

BUILDING NO. 5 TWO STORY UNITS																					
23'	24'	24'	24'	24'	24'	24'	24'	24'	24'	24'	24'	23'	24'	24'	24'	24'	24'	24'	24'	24'	24'
C5A	C5B	C5C	C5D	C5E	C5F	C5G	C5H	C5I	C5J	C5K	C5L	C5M	C5N	C5O	C5P	C5Q	C5R	C5S	C5T	C5U	C5V
1104 S.F.	1104 S.F.	1104 S.F.	1104 S.F.	1104 S.F.	1104 S.F.	1104 S.F.	1104 S.F.	1104 S.F.	1104 S.F.	1104 S.F.	1104 S.F.	1104 S.F.	1104 S.F.	1104 S.F.	1104 S.F.	1104 S.F.	1104 S.F.	1104 S.F.	1104 S.F.	1104 S.F.	1104 S.F.

DETAILS
SCALE: 1"=30'

BLOCK 290, LOT 1
ABSECON TOWNEHOUSE CONDOMINIUM
AT CALIFORNIA HILL
INSET "A"



THIS TAX MAP PLATE HAS BEEN DIGITALLY DRAWN USING COMPUTER-AIDED DRAFTING/DESIGN (CADD) & COORDINATE GEOMETRY (COGO). IT IS BASED ON THE ORIGINAL DIGITALLY DRAWN TAX MAP PLATE BEARING THE OFFICIAL NEW JERSEY DIVISION TAXATION APPROVAL STAMP WITH APPROVAL DATE 01-09-2009 SERIAL NUMBER 929 AND SIGNATURES OF SIGNERS' THOMAS J. REILLY, CHIEF, LOCAL PROPERTY, FIELD ASSISTANCE, SANTO C. DIDONATO, SUPERVISING FIELD REPRESENTATIVE. THIS TAX MAP PLATE HAS BEEN DIGITALLY UPDATED TO REFLECT CURRENT CONDITIONS. THE ORIGINAL DIGITALLY DRAWN TAX MAP PLATE WITH THE OFFICIAL APPROVAL STAMP IS ON FILE WITH REMINGTON & VERNICK ENGINEERS.



TAX MAP CITY OF ABSECON

ATLANTIC COUNTY NEW JERSEY

SCALE: 1" = 100' DATE: 11-10-2005

CRAIG F. REMINGTON LAND SURVEYOR LIC. NO. 23924

REMINGTON, VERNICK & WALBERG ENGINEERS
 845 N. MAIN STREET, PLEASANTVILLE, NJ 08232
 (609) 645-7100 FAX (609) 645-7076
 WEB SITE ADDRESS: WWW.RVE.COM