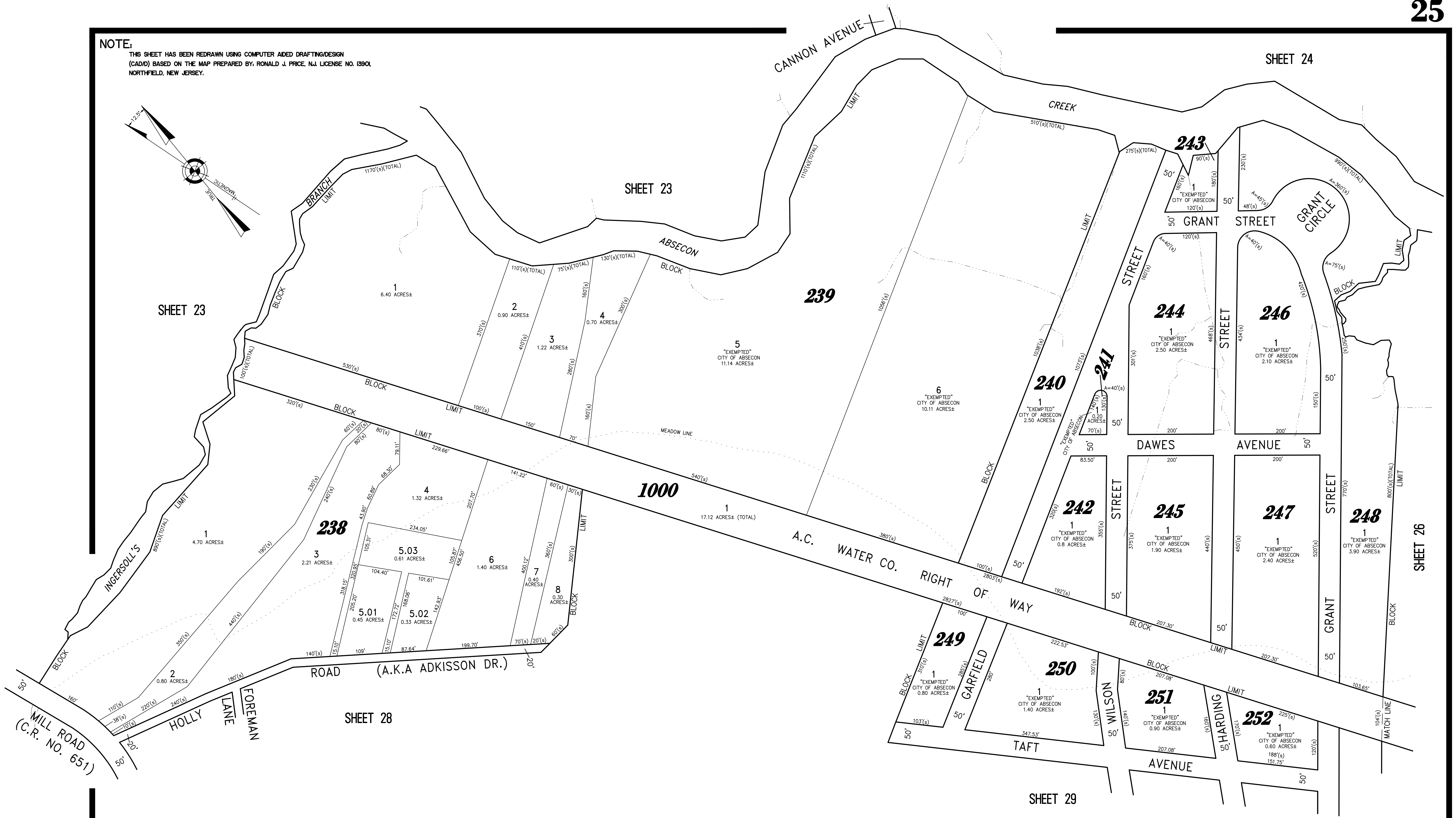
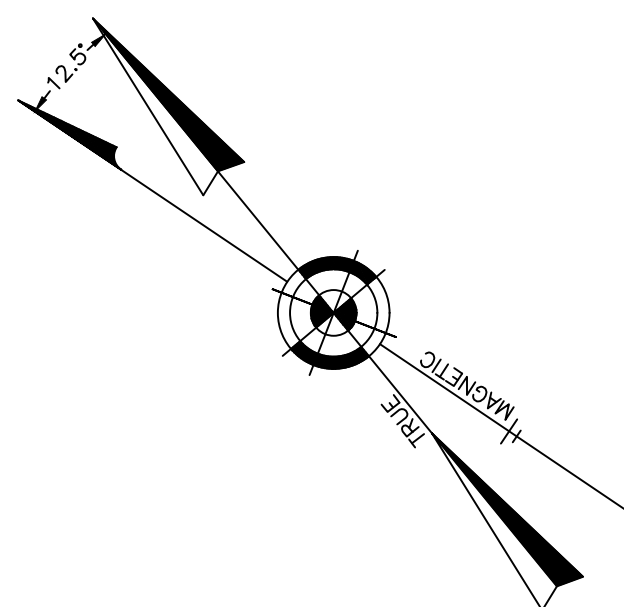


NOTE:

THIS SHEET HAS BEEN REDRAWN USING COMPUTER AIDED DRAFTING/DESIGN (CADD) BASED ON THE MAP PREPARED BY RONALD J. PRICE, N.J. LICENSE NO. 13901, NORTHFIELD, NEW JERSEY.



| REVISIONS | | |
|-----------|--------------------|-------|
| 10-3-2017 | CHARLES E. ADAMSON | 42627 |
| | | |
| | | |
| | | |
| | | |
| | | |
| | | |
| | | |
| | | |

"THIS TAX MAP PLATE HAS BEEN DIGITALLY DRAWN USING COMPUTER-AIDED DRAFTING/DESIGN (CADD) & COORDINATE GEOMETRY (COGO). IT IS BASED ON THE ORIGINAL DIGITALLY DRAWN TAX MAP PLATE BEARING THE OFFICIAL NEW JERSEY DIVISION TAXATION APPROVAL STAMP WITH APPROVAL DATE 01-09-2009 SERIAL NUMBER 929 AND SIGNATURES OF SIGNERS' THOMAS J. REILLY, CHIEF, LOCAL PROPERTY, FIELD ASSISTANCE, SANTO C. DIDONATO, SUPERVISING FIELD REPRESENTATIVE. THIS TAX MAP PLATE HAS BEEN DIGITALLY UPDATED TO REFLECT CURRENT CONDITIONS. THE ORIGINAL DIGITALLY DRAWN TAX MAP PLATE WITH THE OFFICIAL APPROVAL STAMP IS ON FILE WITH REMINGTON & VERNICK ENGINEERS."



TAX MAP CITY OF ABSECON

ATLANTIC COUNTY NEW JERSEY SCALE: 1" = 100' DATE: 11-10-2005

CRAIG F. REMINGTON LAND SURVEYOR LIC. NO. 23924

REMINGTON, VERNICK & WALBERG ENGINEERS 845 N. MAIN STREET, PLEASANTVILLE, N.J. 08232 (609) 645-700, FAX (609) 645-7076 WEB SITE ADDRESS: WWW.RVW.COM