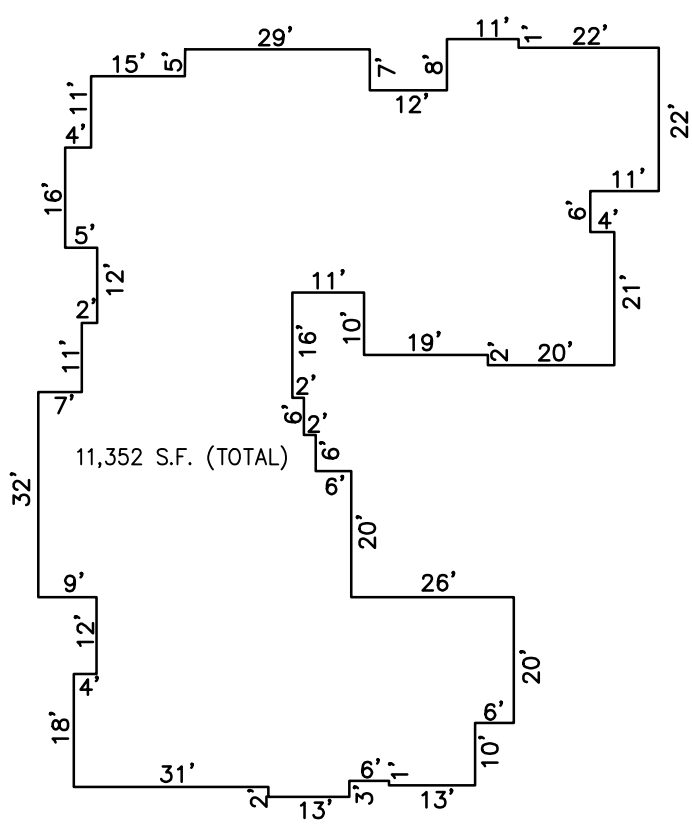
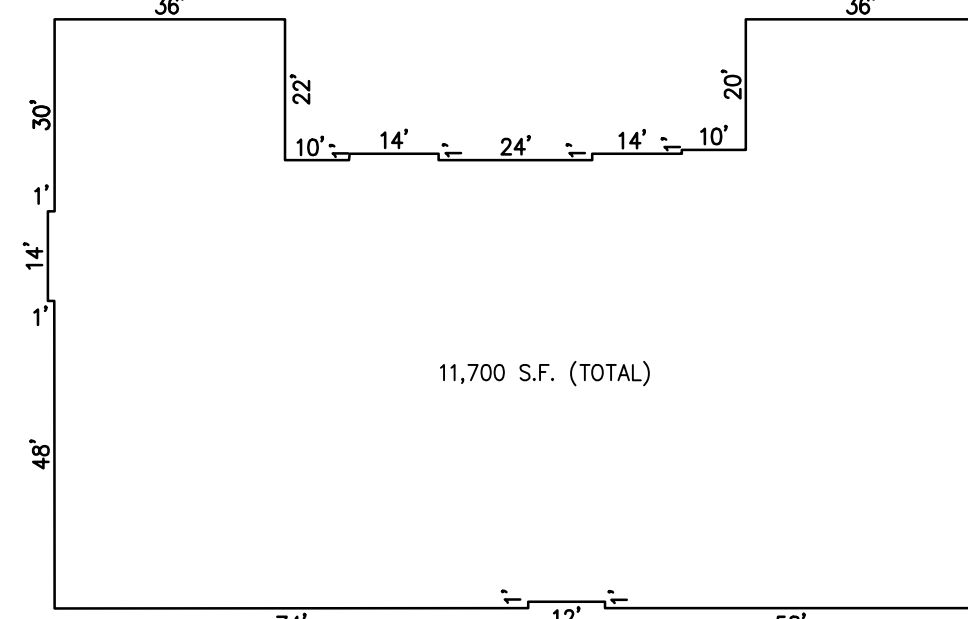


REVISIONS		
11-22-2013	CRAIG F. REMINGTON	23924
12-10-2015	CHARLES E. ADAMSON	42627

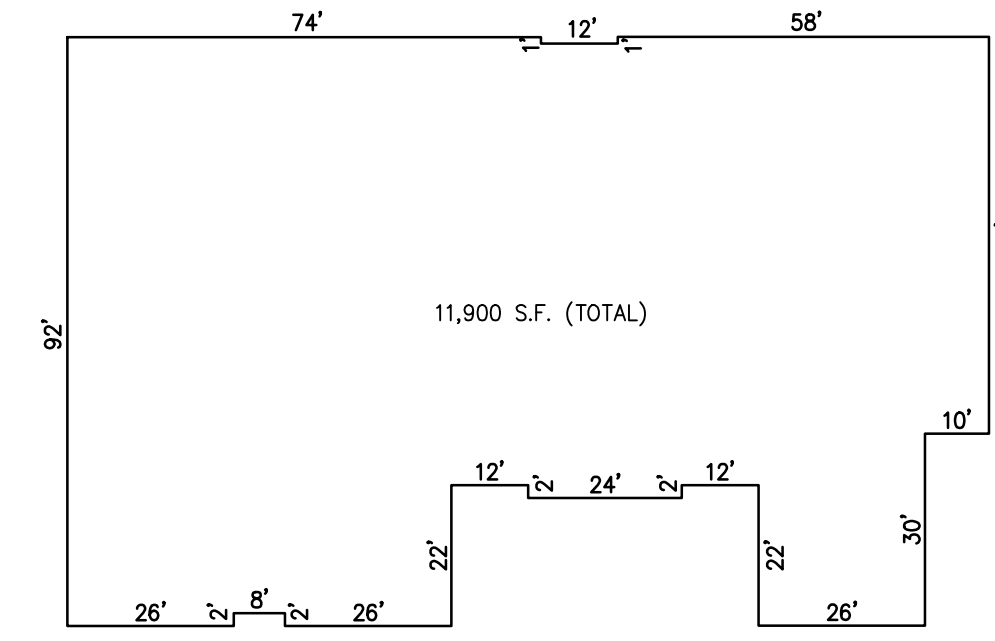
NOTE:
THIS SHEET HAS BEEN DRAWN USING COMPUTER AIDED DRAFTING/DESIGN (CAD/D)



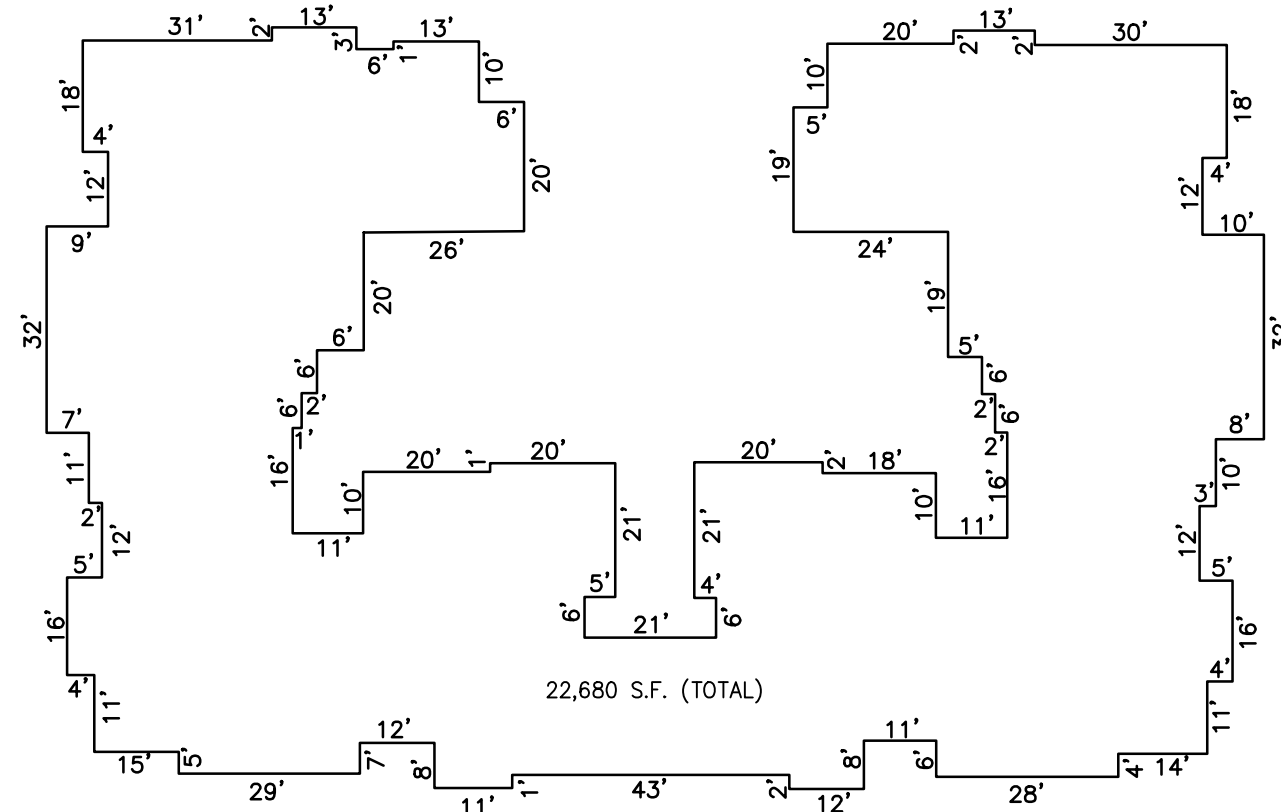
FIRST AND SECOND FLOOR
BUILDING "C"
C000C



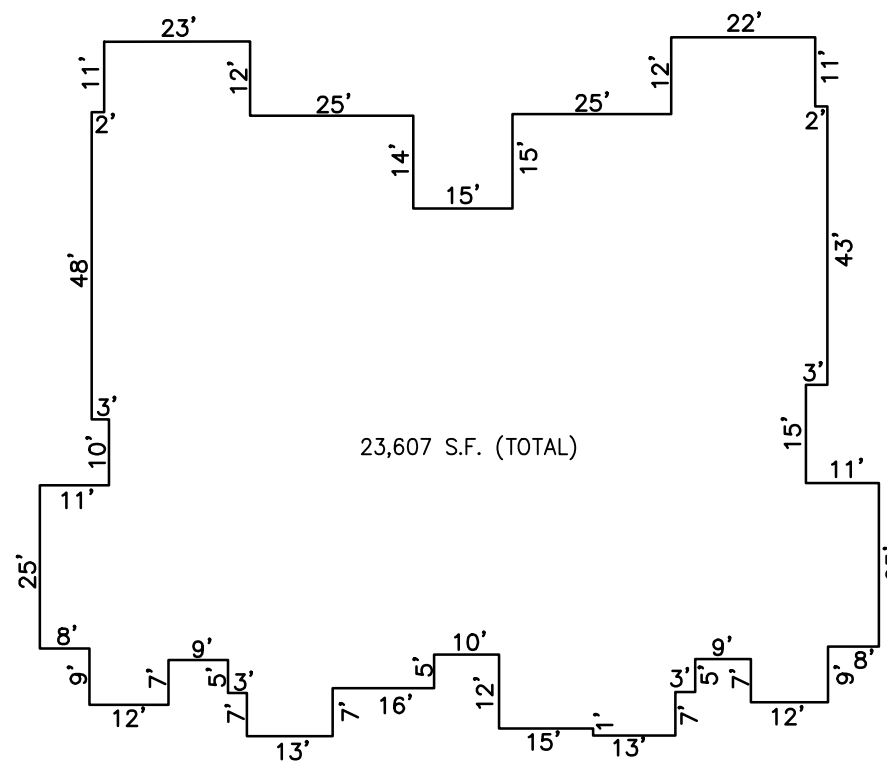
FIRST AND SECOND FLOOR
(32) SENIOR APARTMENTS
BUILDING "1"
C0001



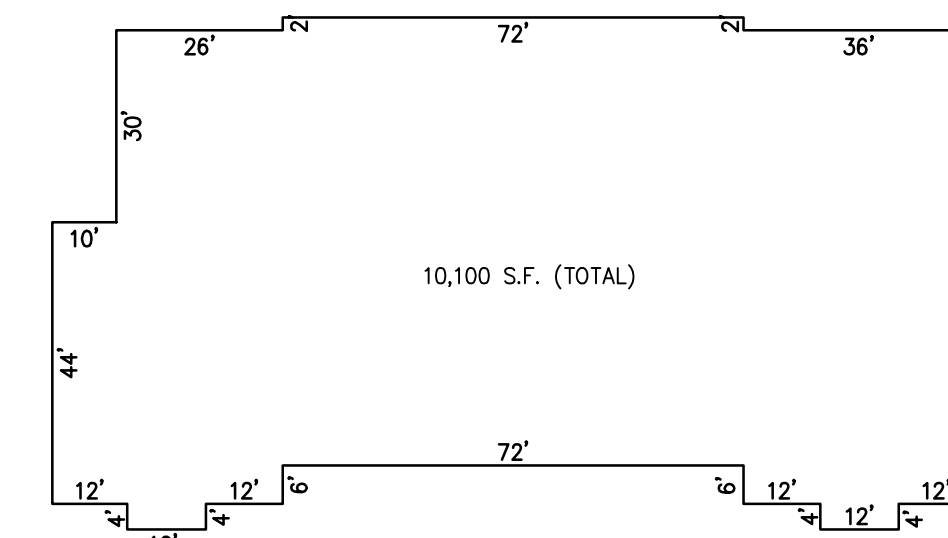
FIRST AND SECOND FLOOR
(36) SENIOR AFFORDABLE APARTMENTS
BUILDING "8"
C0008



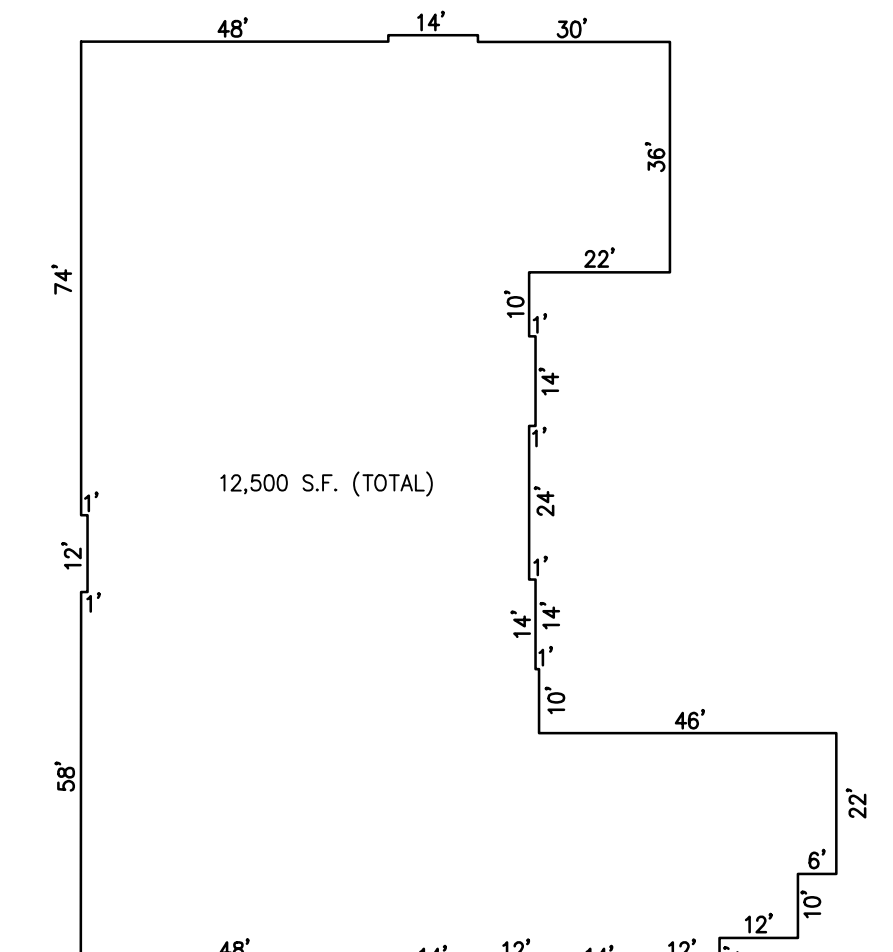
FIRST AND SECOND FLOOR
BUILDING "B"
C000B



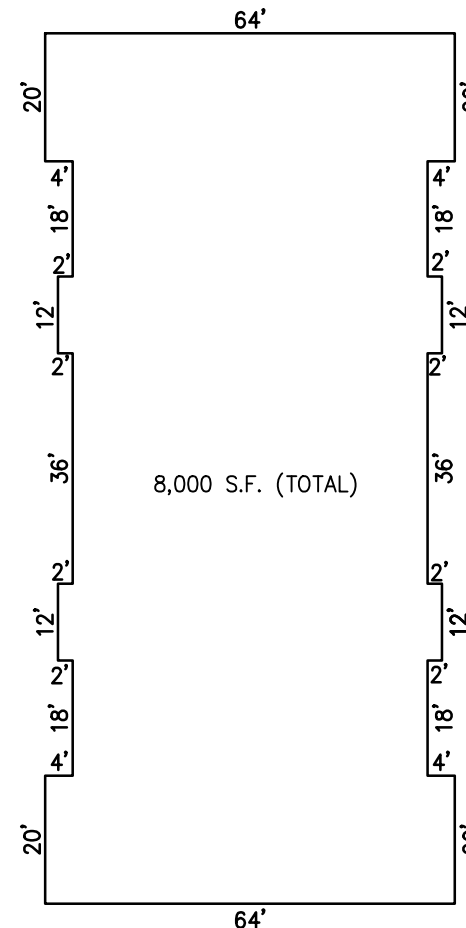
FIRST AND SECOND FLOOR
BUILDING "7"
C000H



FIRST AND SECOND FLOOR
(24) AFFORDABLE APARTMENTS
BUILDING "5"
C0005

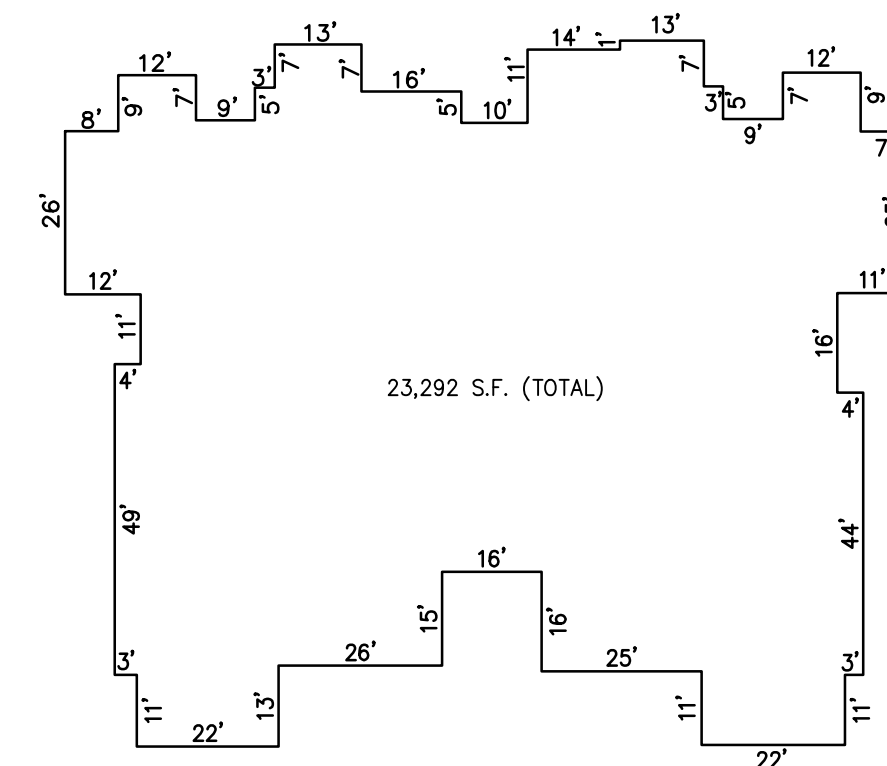


FIRST AND SECOND FLOOR
BUILDING "6"
C0006

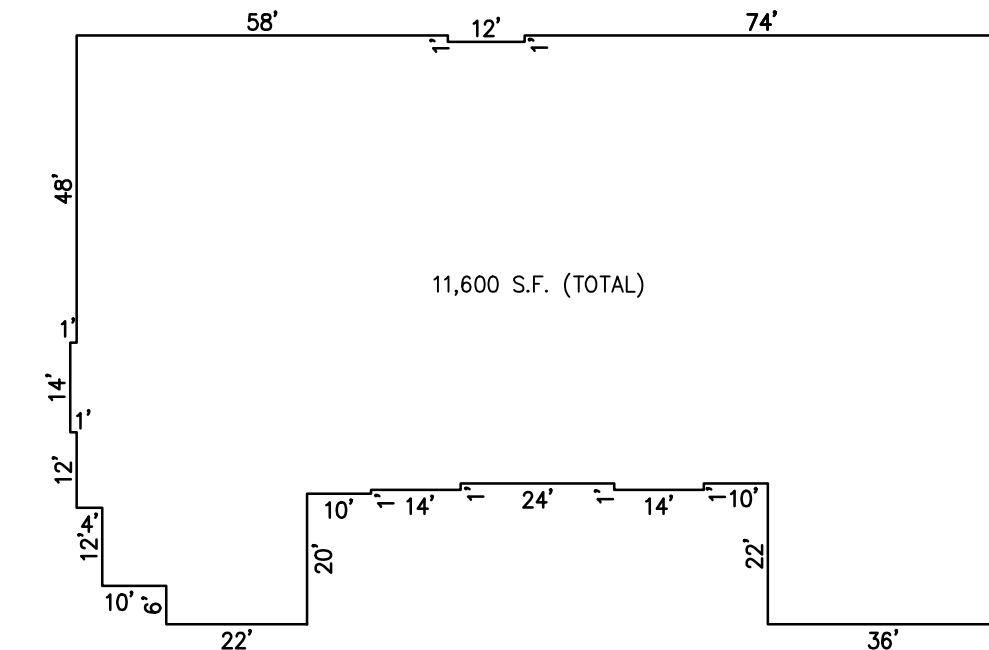


FIRST AND SECOND FLOOR

BUILDING "11" BUILDING "12" BUILDING "13" BUILDING "14" BUILDING "15"
C0011 C0011 C0013 C0014 C0015



FIRST AND SECOND FLOOR
BUILDING "1"
C0001



FIRST AND SECOND FLOOR
BUILDING "3" BUILDING "4" BUILDING "7" BUILDING "9"
C0003 C0004 C0007 C0009

NOTE: DIMENSIONS AND SQUARE FOOTAGE ARE TYPICAL FOR ALL SIMILAR UNITS

DETAILS
SCALE: 1"=30'

PLATE 3
BLOCK 9.02, LOT 3.02
MI PLACE AT ABSECON APARTMENTS

"THIS TAX MAP PLATE HAS BEEN DIGITALLY DRAWN USING COMPUTER-AIDED DRAFTING/DESIGN (CADD) & COORDINATE GEOMETRY (COGO). IT IS BASED ON THE ORIGINAL DIGITALLY DRAWN TAX MAP PLATE BEARING THE OFFICIAL NEW JERSEY DIVISION TAXATION APPROVAL STAMP WITH APPROVAL DATE 01-09-2009 SERIAL NUMBER 929 AND SIGNATURES OF SIGNERS' THOMAS J. REILLY, CHIEF, LOCAL PROPERTY, FIELD ASSISTANCE, SANTO C. DIDONATO, SUPERVISING FIELD REPRESENTATIVE. THIS TAX MAP PLATE HAS BEEN DIGITALLY UPDATED TO REFLECT CURRENT CONDITIONS. THE ORIGINAL DIGITALLY DRAWN TAX MAP PLATE WITH THE OFFICIAL APPROVAL STAMP IS ON FILE WITH REMINGTON & VERNICK ENGINEERS."



TAXMAP
CITY OF ABSECON

ATLANTIC COUNTY NEW JERSEY
SCALE: AS NOTED DATE: 6-25-2012

CRAIG F. REMINGTON LAND SURVEYOR LIC. NO. 23924

REMINGTON, VERNICK & WALBERG ENGINEERS
24 GA 28048700
845 N. MAIN STREET, PLEASANTVILLE, NJ 08232
(609) 645-7100, FAX (609) 645-7076
WEB SITE ADDRESS: WWW.RVW.COM

TO SHOW CONDITIONS AS OF 12-20-2016