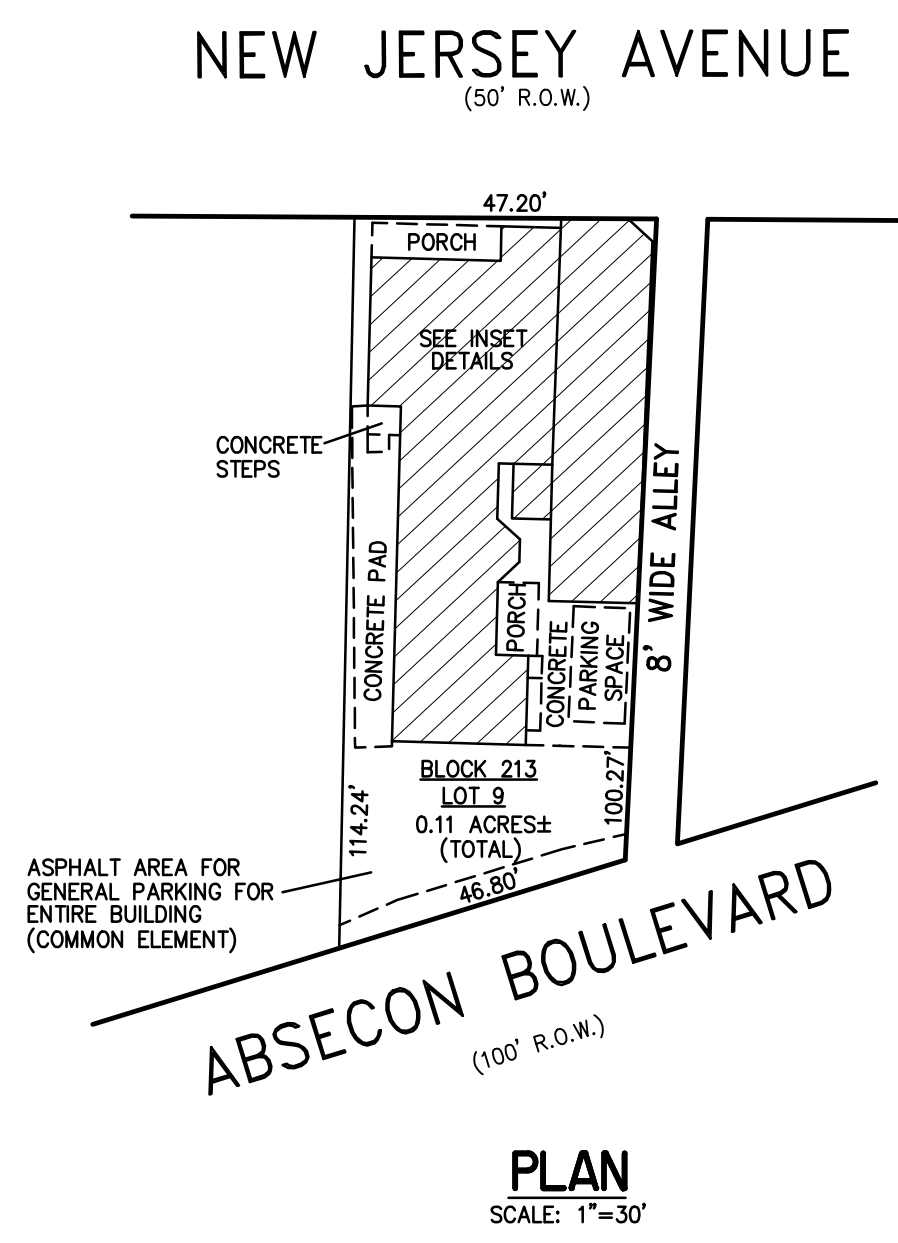
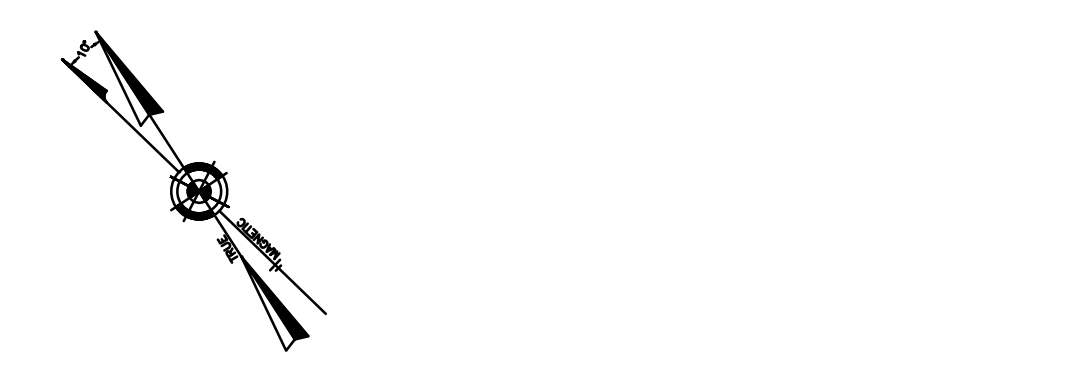
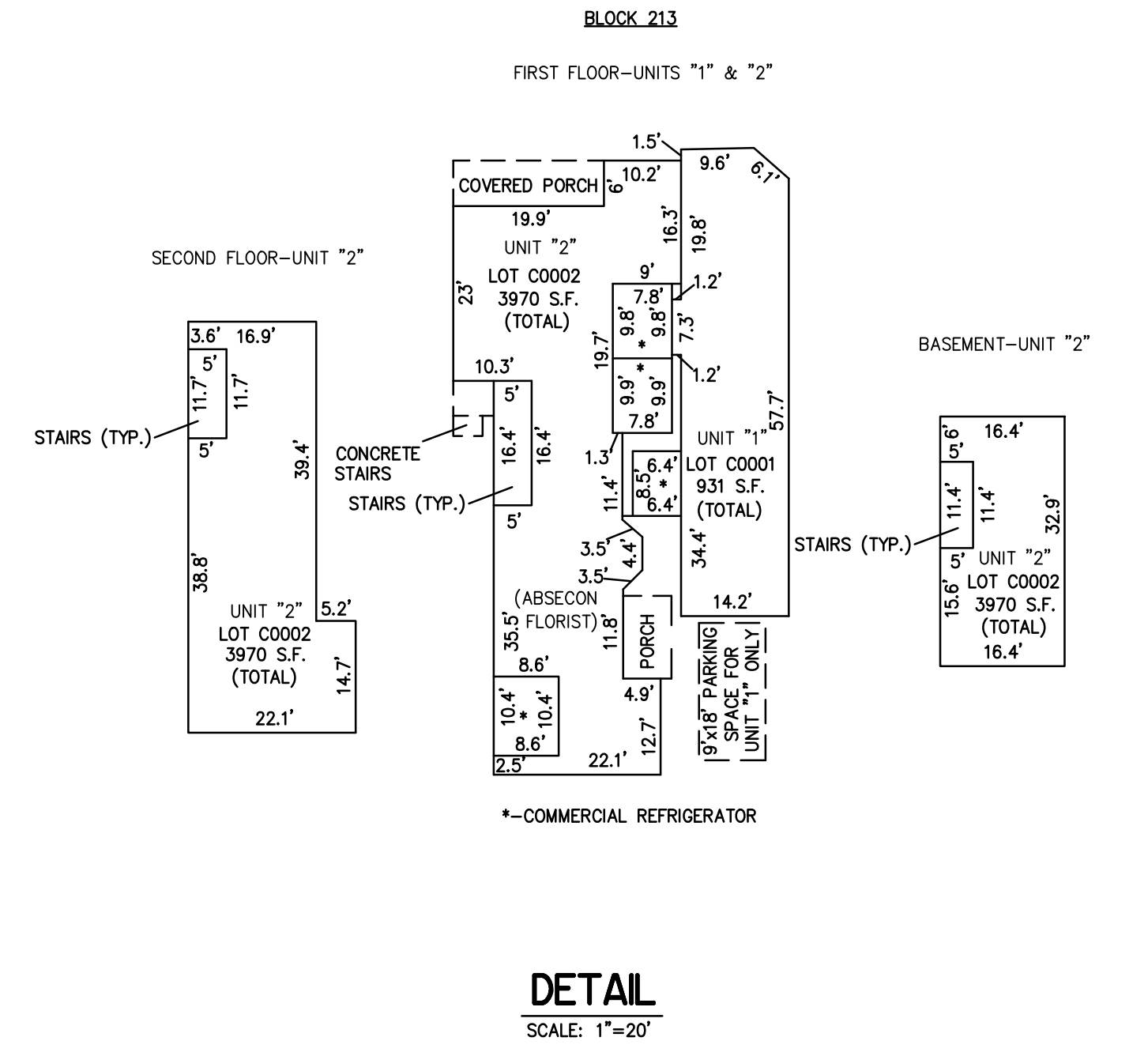


REVISIONS		
11-22-2013	CRAIG F. REMINGTON	23924

NOTE:
 THIS SHEET HAS BEEN REDRAWN USING COMPUTER AIDED DRAFTING/DESIGN (CAD/D) BASED ON THE MAP PREPARED BY RONALD J. PRICE, N.J. LICENSE NO. 13901, NORTHFIELD, NEW JERSEY.



UNIT	LOT	SQUARE FOOTAGE
1	C0001	931 S.F.
2	C0002	3970 S.F.




NOTE: 1. ALL CONDOMINIUM UNIT SQUARE FOOTAGE AREAS AND DIMENSIONS REFLECT FIELD MEASUREMENTS.
 2. DIMENSIONS AND SQUARE FOOTAGE ARE TYPICAL FOR ALL SIMILAR UNITS

BLOCK 213, LOT 9
129-131 NEW JERSEY AVENUE CONDOMINIUM
(ABSECON FLORIST)

PLATE 19
BLOCK 213, LOT 9
NEW JERSEY AVENUE CONDOMINIUM

"THIS TAX MAP PLATE HAS BEEN DIGITALLY DRAWN USING COMPUTER-AIDED DRAFTING/DESIGN (CAD/D) & COORDINATE GEOMETRY (COCO). IT IS BASED ON THE ORIGINAL DIGITALLY DRAWN TAX MAP PLATE BEARING THE OFFICIAL NEW JERSEY DIVISION TAXATION APPROVAL STAMP WITH APPROVAL DATE 01-09-2009 SERIAL NUMBER 929 AND SIGNATURES OF SIGNERS' THOMAS J. REILLY, CHIEF, LOCAL PROPERTY, FIELD ASSISTANCE, SANTO C. DIDONATO, SUPERVISING FIELD REPRESENTATIVE. THIS TAX MAP PLATE HAS BEEN DIGITALLY UPDATED TO REFLECT CURRENT CONDITIONS. THE ORIGINAL DIGITALLY DRAWN TAX MAP PLATE WITH THE OFFICIAL APPROVAL STAMP IS ON FILE WITH REMINGTON & VERNICK ENGINEERS."

TAXMAP
CITY OF ABSECON
 ATLANTIC COUNTY NEW JERSEY
 SCALE: AS NOTED DATE: 6-25-2012
CRAIG F. REMINGTON LAND SURVEYOR LIC. NO. 23924
 **REMINGTON, VERNICK & WALBERG ENGINEERS**
 845 N. MAIN STREET, PLEASANTVILLE, N.J. 08232
 (609) 645-7100, FAX (609) 645-7076
 WEB SITE ADDRESS: WWW.RVWE.COM
 TO SHOW CONDITIONS AS OF 12-20-2018