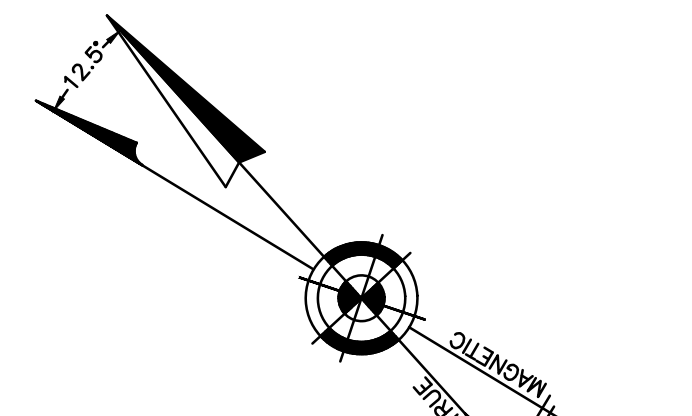
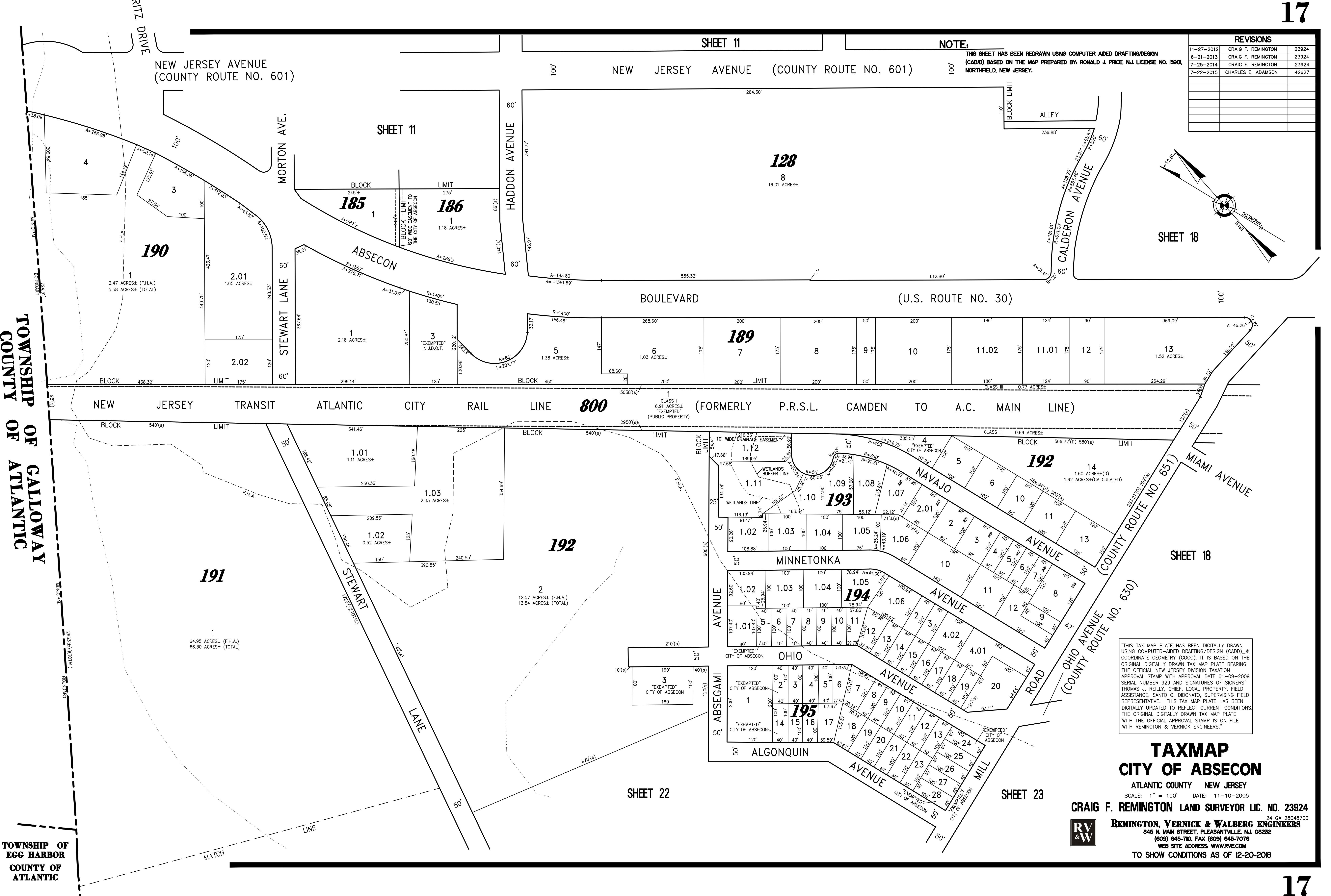


SHEET 11

NOTE:

THIS SHEET HAS BEEN REDRAWN USING COMPUTER AIDED DRAFTING/DESIGN (CADD) BASED ON THE MAP PREPARED BY: RONALD J. PRICE, N.J. LICENSE NO. 13901 NORTHFIELD, NEW JERSEY.

REVISIONS		
11-27-2012	CRAIG F. REMINGTON	23924
6-21-2013	CRAIG F. REMINGTON	23924
7-25-2014	CRAIG F. REMINGTON	23924
7-22-2015	CHARLES E. ADAMSON	42627



SHEET 18

SHEET 18

SHEET 22

SHEET 23

"THIS TAX MAP PLATE HAS BEEN DIGITALLY DRAWN USING COMPUTER-AIDED DRAFTING/DESIGN (CADD) & COORDINATE GEOMETRY (COGO). IT IS BASED ON THE ORIGINAL DIGITALLY DRAWN TAX MAP PLATE BEARING THE OFFICIAL NEW JERSEY DIVISION TAXATION APPROVAL STAMP WITH APPROVAL DATE 01-09-2009 SERIAL NUMBER 929 AND SIGNATURES OF SIGNERS THOMAS J. REILLY, CHIEF, LOCAL PROPERTY, FIELD ASSISTANCE, SANTO C. DIDONATO, SUPERVISING FIELD REPRESENTATIVE. THIS TAX MAP PLATE HAS BEEN DIGITALLY UPDATED TO REFLECT CURRENT CONDITIONS. THE ORIGINAL DIGITALLY DRAWN TAX MAP PLATE WITH THE OFFICIAL APPROVAL STAMP IS ON FILE WITH REMINGTON & VERNICK ENGINEERS."

TAXMAP CITY OF ABSECON

ATLANTIC COUNTY NEW JERSEY
SCALE: 1" = 100' DATE: 11-10-2005

CRAIG F. REMINGTON LAND SURVEYOR LIC. NO. 23924



REMINGTON, VERNICK & WALBERG ENGINEERS
24 GA 28048700
845 N. MAIN STREET, PLEASANTVILLE, N.J. 08232
(609) 645-710, FAX (609) 645-7076
WEB SITE ADDRESS: WWW.RVW.COM

TO SHOW CONDITIONS AS OF 12-20-2016

TOWNSHIP OF GALLOWAY
COUNTY OF ATLANTIC

TOWNSHIP OF EGG HARBOR
COUNTY OF ATLANTIC