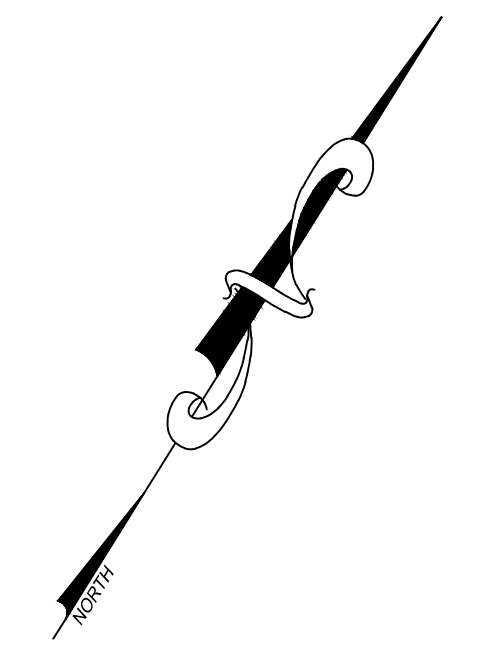
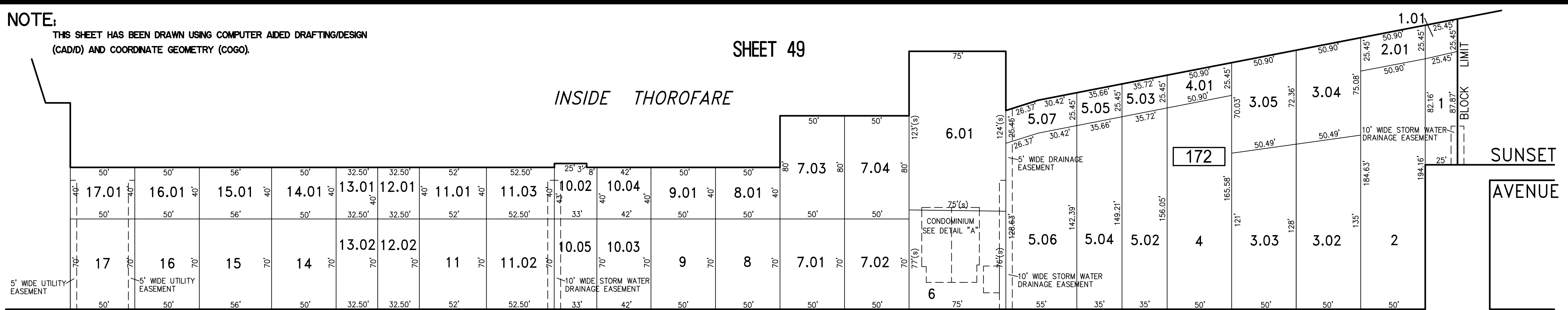


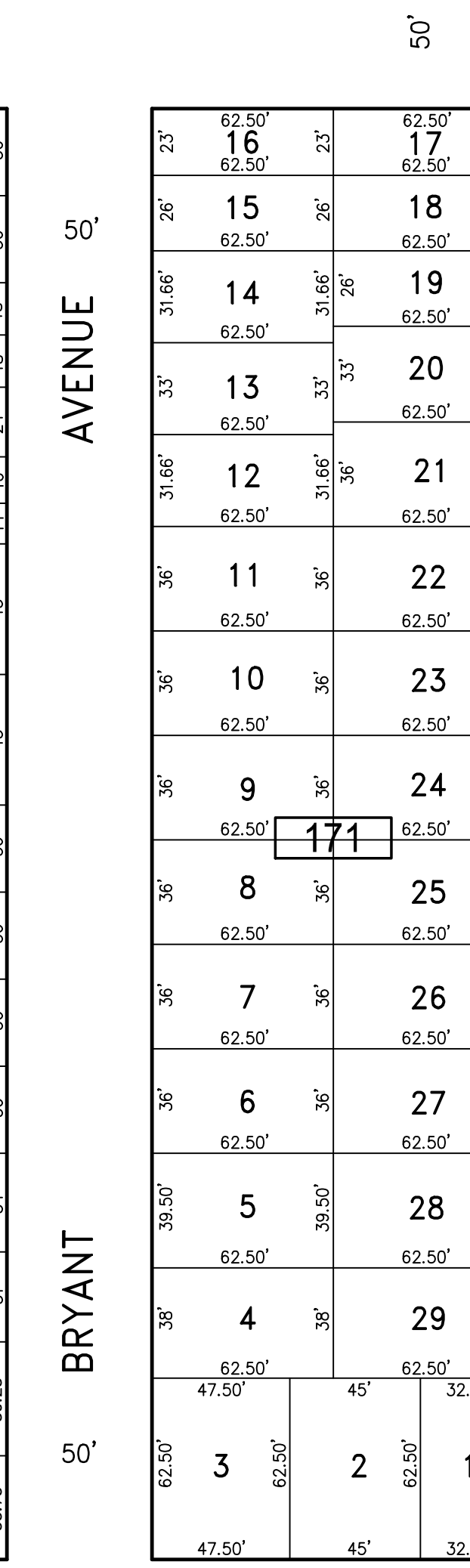
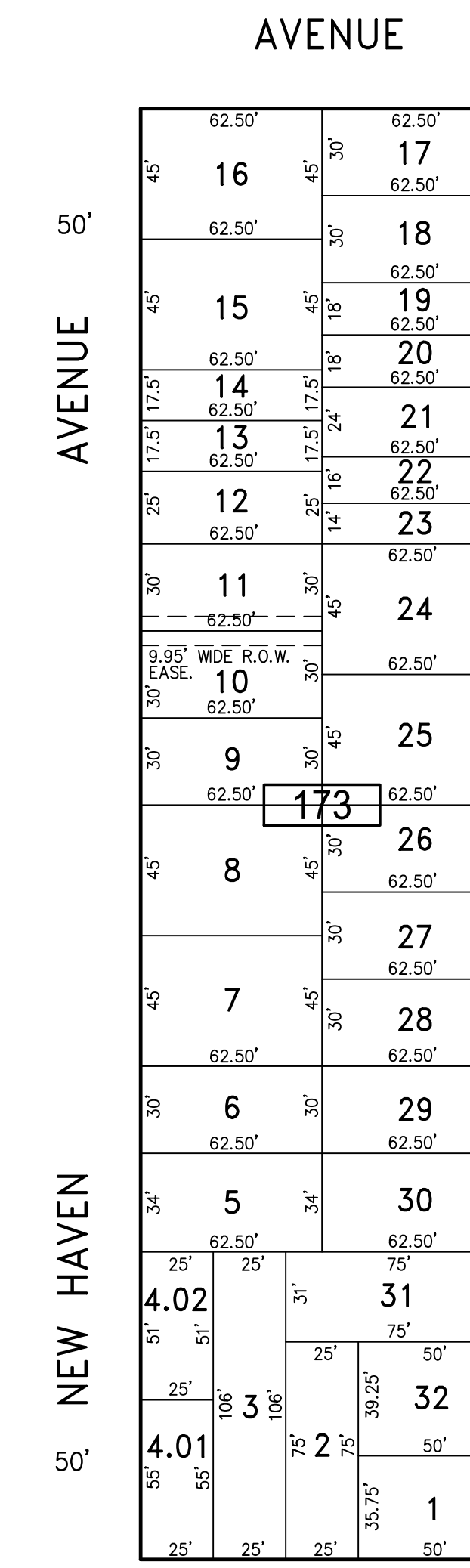
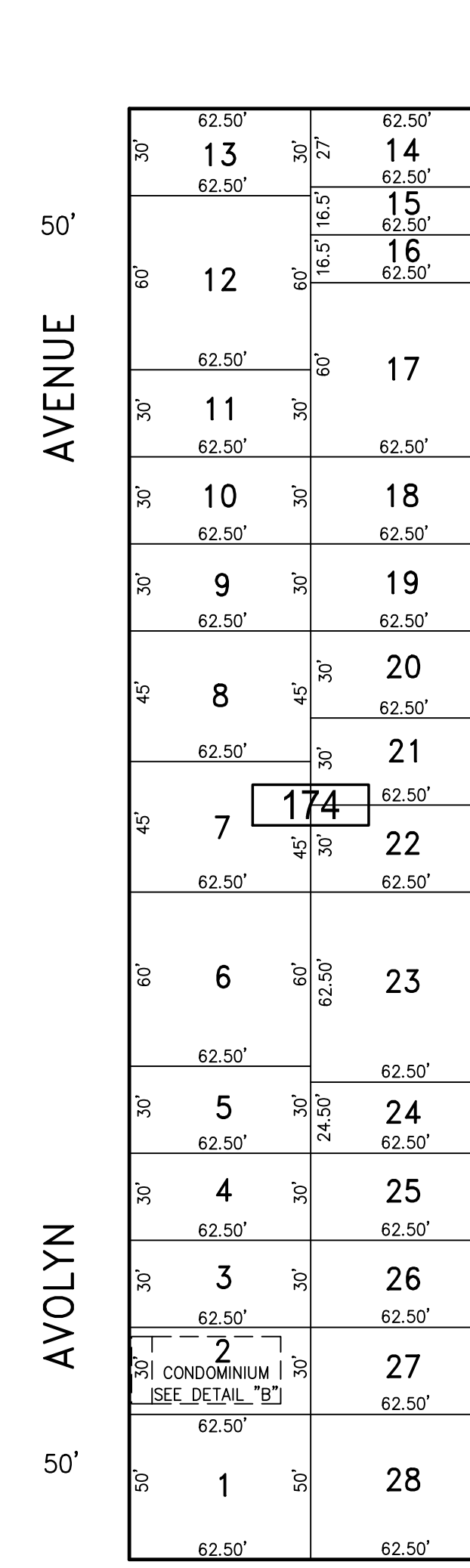
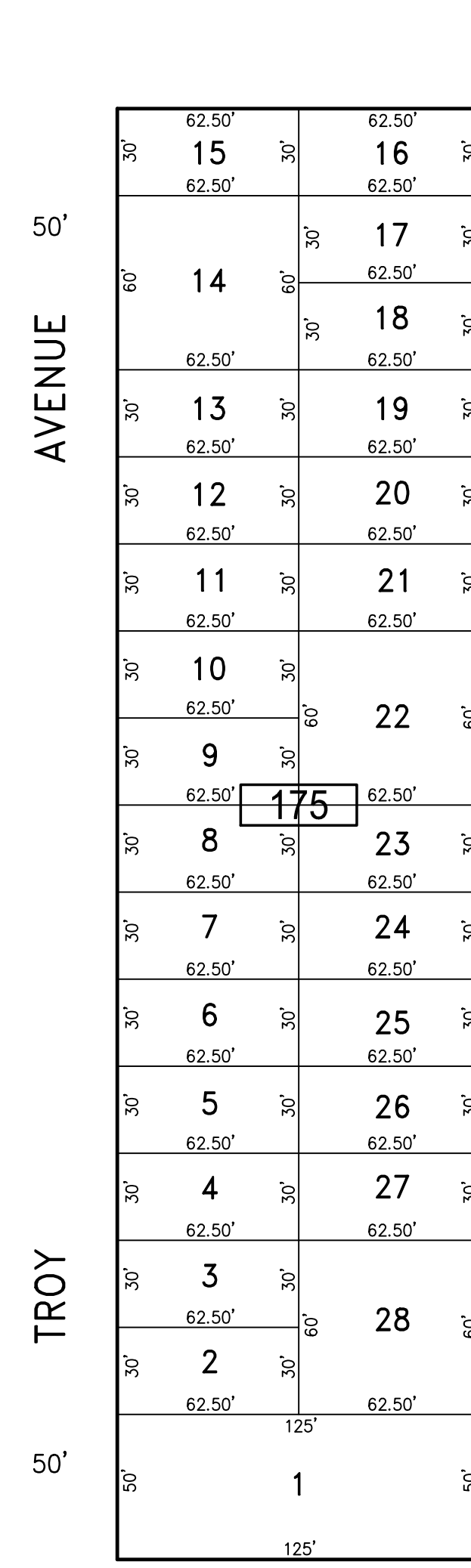
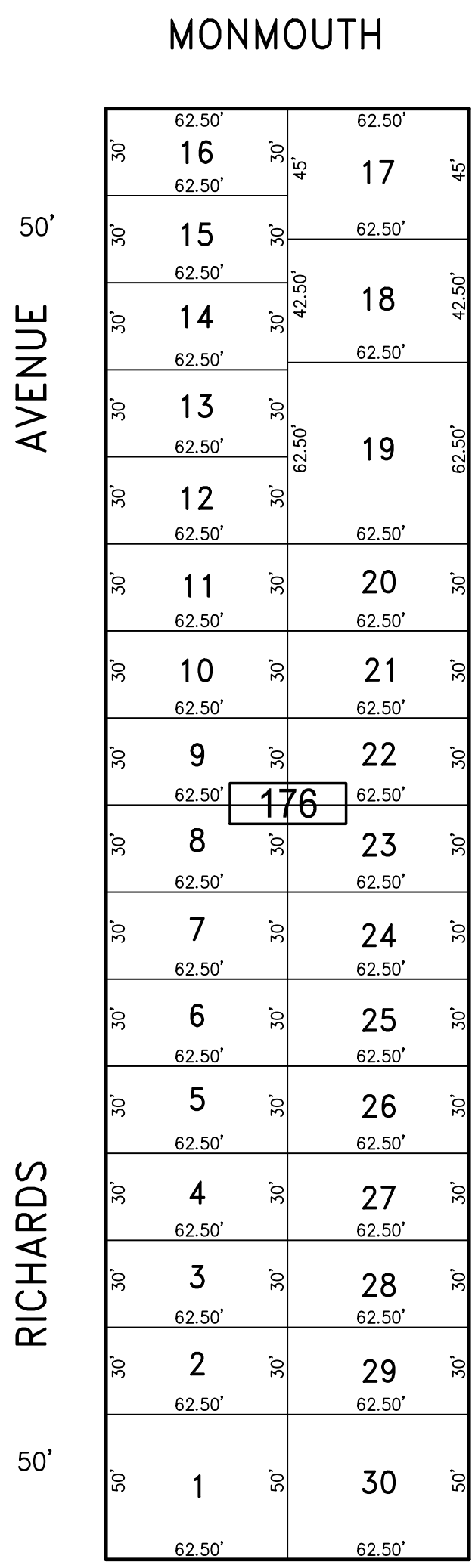
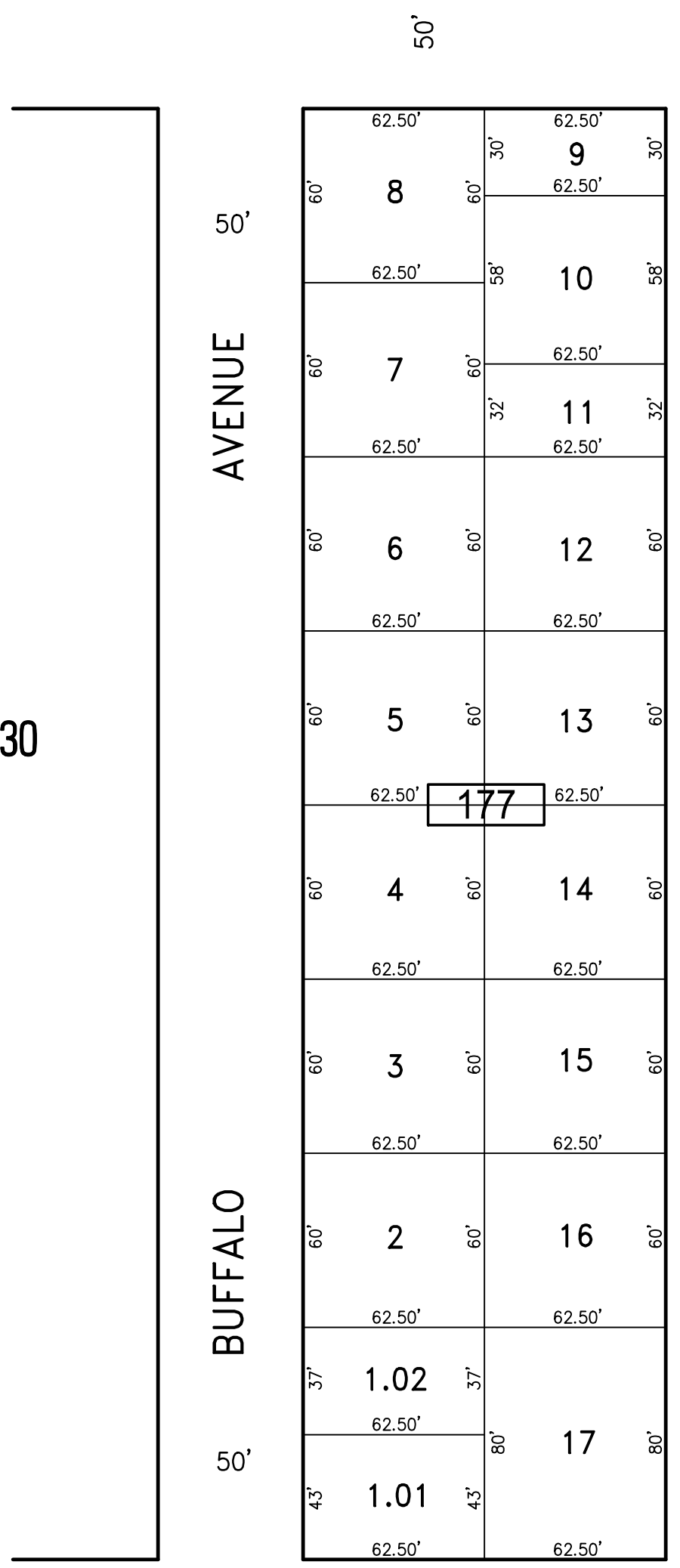
REVISIONS		
DATE	NAME	NO.
3-1-2017	CHARLES E. ADAMSON	42627
1-21-2019	CHARLES E. ADAMSON	42627
1-22-2020	CHARLES E. ADAMSON	42627

**NOTE:**  
THIS SHEET HAS BEEN DRAWN USING COMPUTER AIDED DRAFTING/DESIGN (CADD) AND COORDINATE GEOMETRY (COGO).

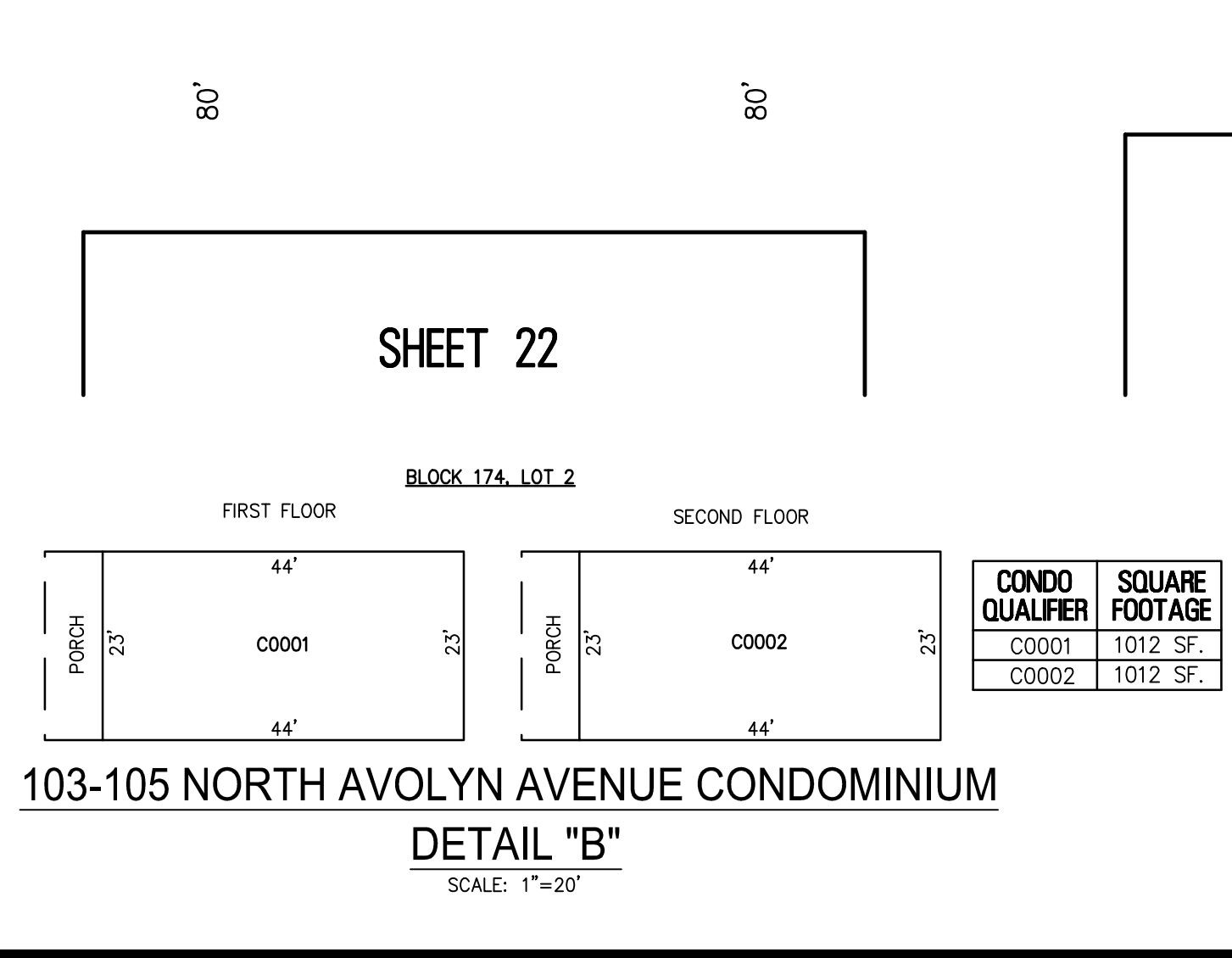
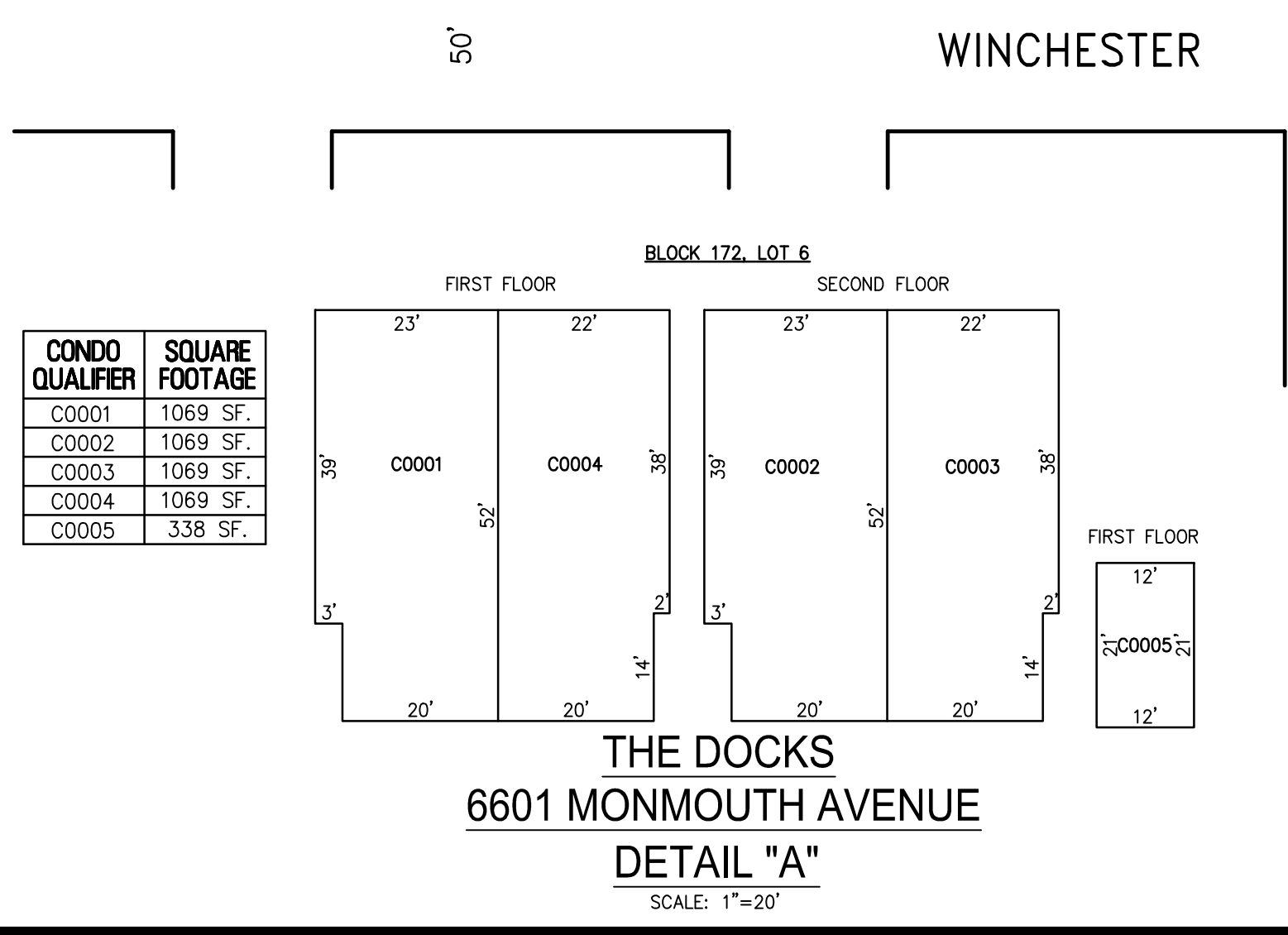
SHEET 49



SHEET 30



SHEET 28



"THIS TAX MAP SHEET HAS BEEN DIGITALLY REVISED USING COMPUTER-AIDED DRAFTING/DESIGN (CADD) & COORDINATE GEOMETRY (COGO). IT IS BASED ON THE ORIGINAL DIGITALLY DRAWN TAX MAP PLATE BEARING THE OFFICIAL NEW JERSEY DIVISION TAXATION APPROVAL STAMP WITH APPROVAL DATE JULY, 20, 2016. SERIAL NUMBER 1070 AND SIGNATURE OF JUDY P. MILLER, CTA, CHIEF PROPERTY ADMINISTRATION AND SHELLY REILLY, CTA, PRINCIPAL FIELD REPRESENTATIVE. THE ORIGINAL DIGITALLY DRAWN TAX MAP PLATE WITH THE OFFICIAL APPROVAL STAMP IS ON FILE WITH REMINGTON & VERNICK ENGINEERS."

**TAX MAP**  
**CITY OF VENTNOR**  
ATLANTIC COUNTY NEW JERSEY  
SCALE: 1" = 50' DATE: 2-19-2015

**CHARLES E. ADAMSON** NJ PROFESSIONAL LAND SURVEYOR LIC. NO. 42627  
24 GA 28048700

**REMINGTON, VERNICK & WALBERG ENGINEERS**  
845 N. MAIN STREET, PLEASANTVILLE, NJ 08232  
(609) 645-7700, FAX (609) 645-7076  
WEB SITE ADDRESS: WWW.RVE.COM  
TO SHOW CONDITIONS AS OF 2-10-2021