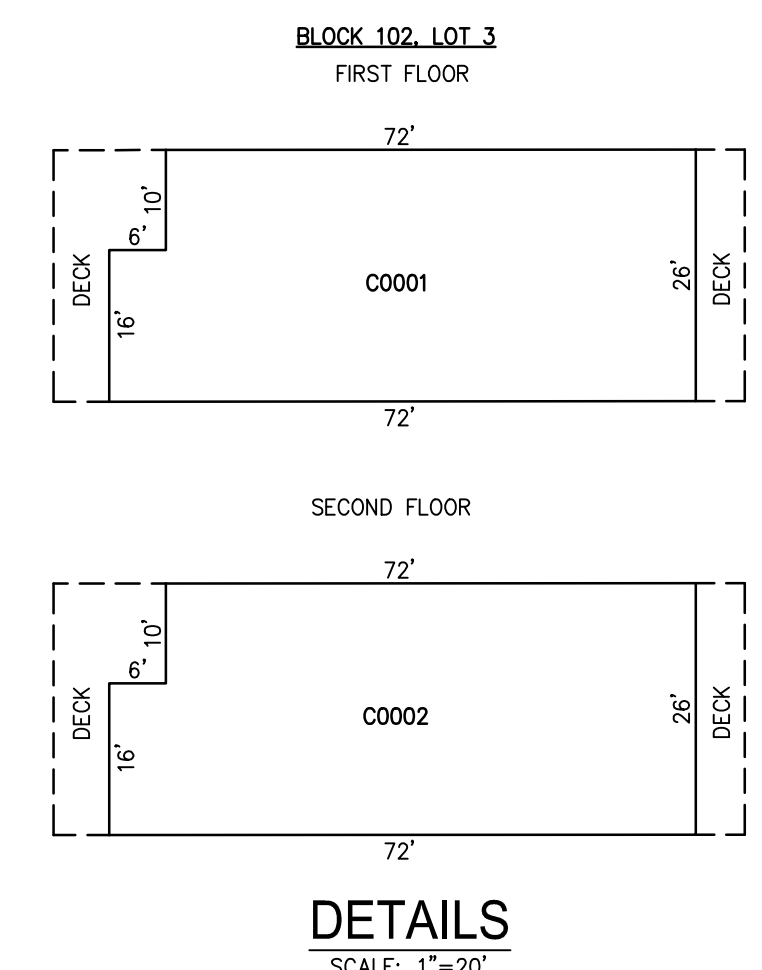
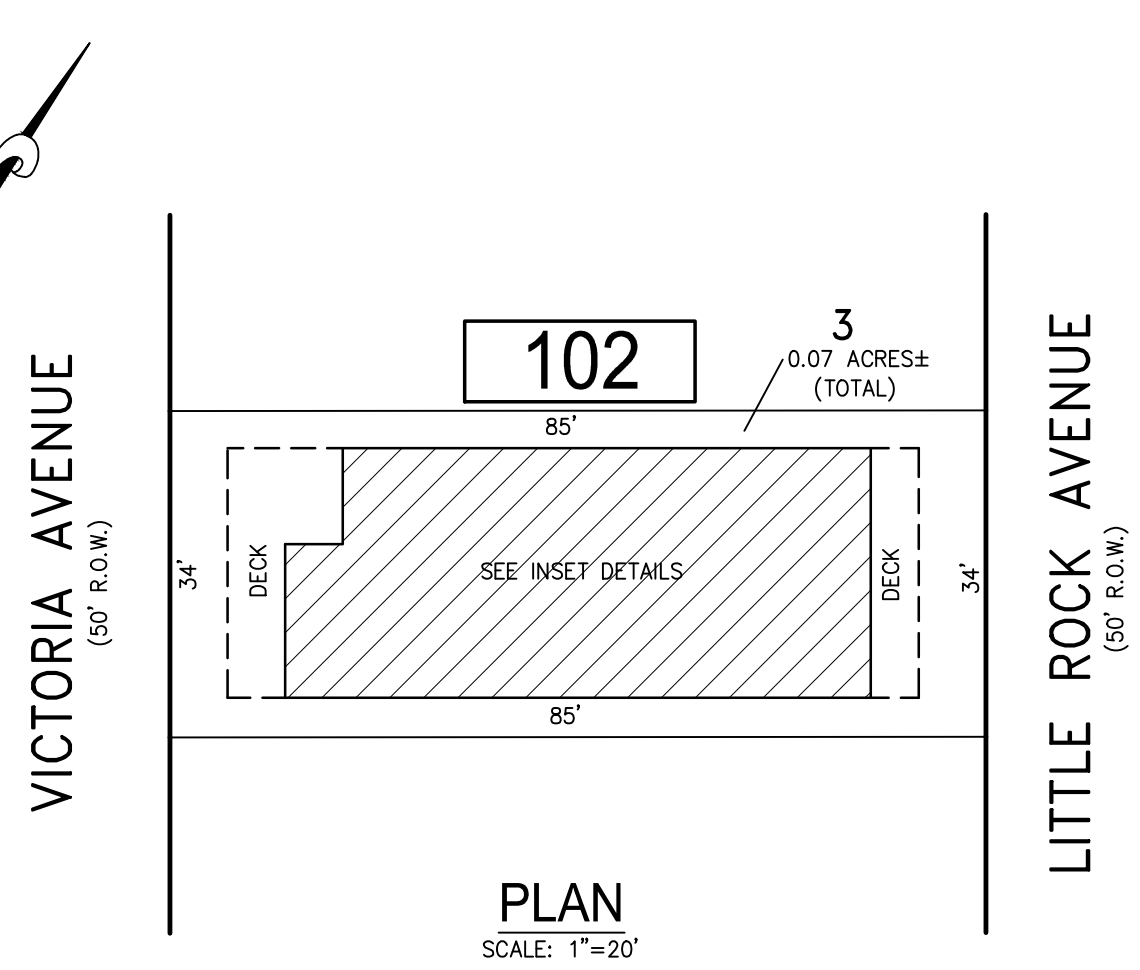
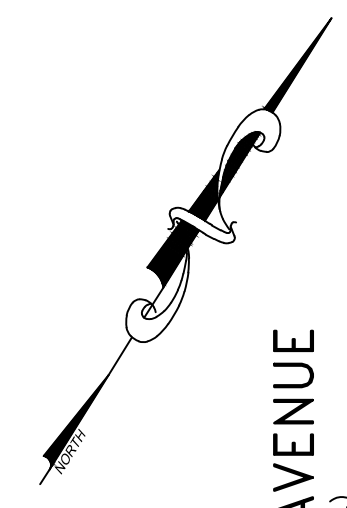


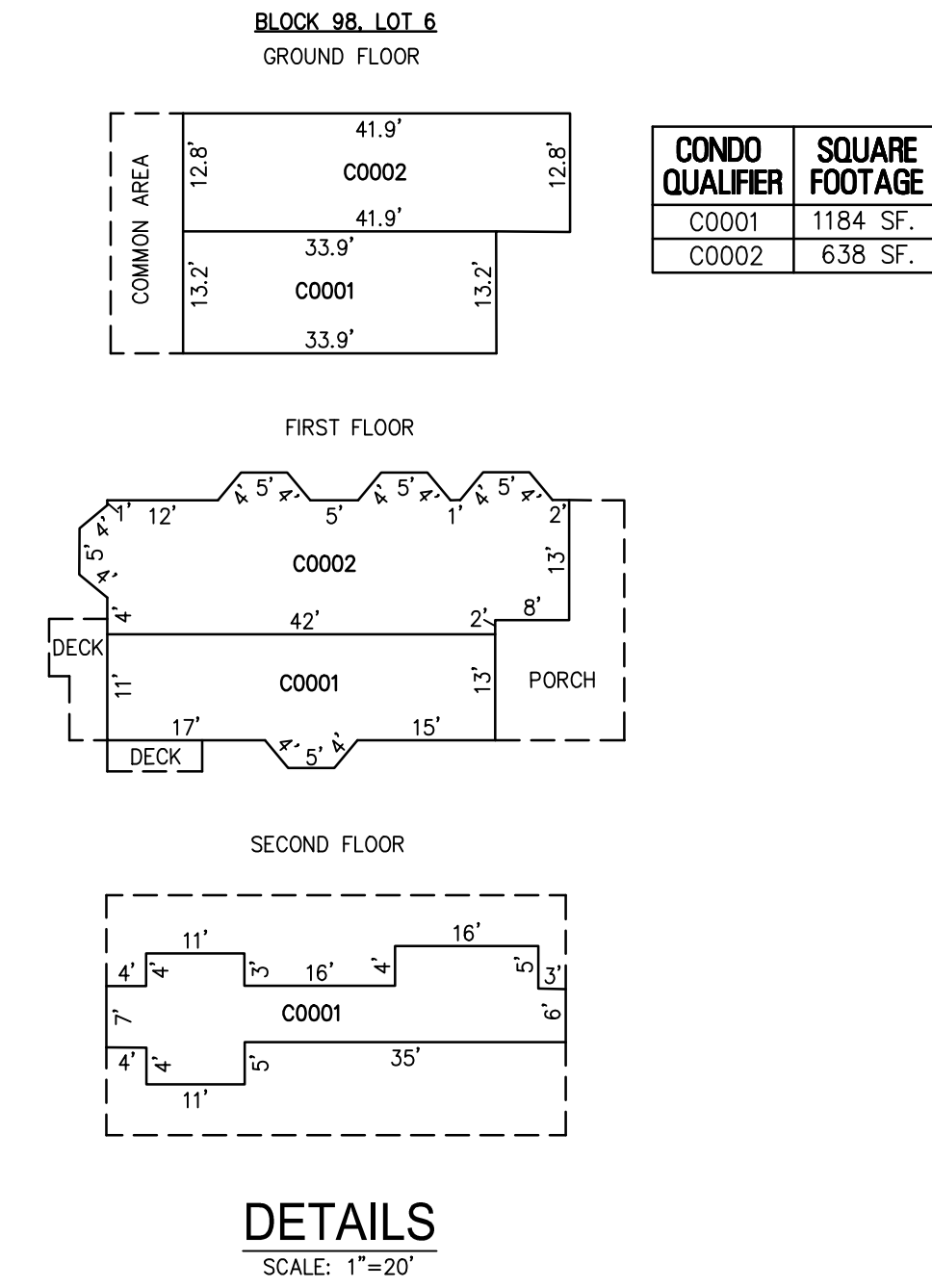
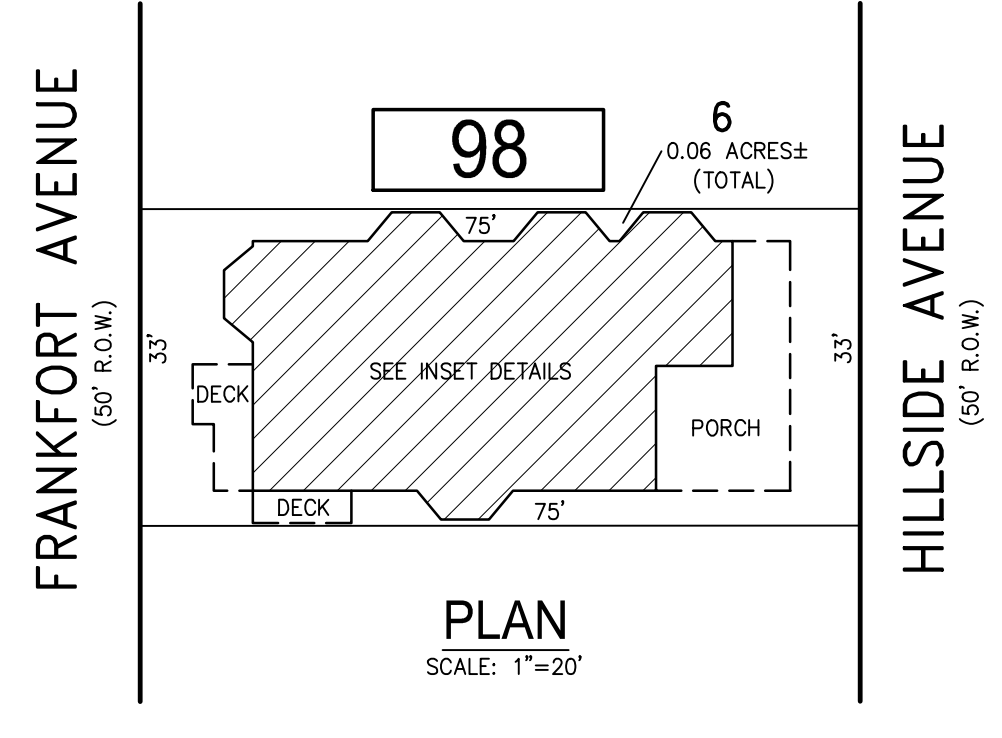
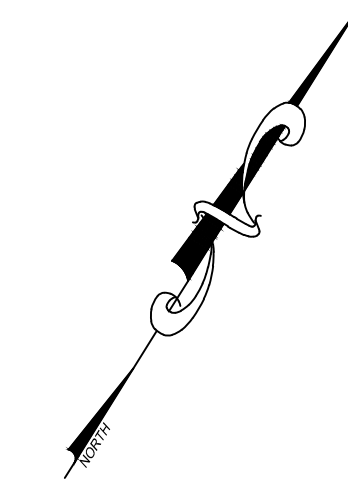
REVISIONS		
DATE	NAME	NO.

NOTE:
THIS SHEET HAS BEEN DRAWN USING COMPUTER AIDED DRAFTING/DESIGN (CAD/D) AND COORDINATE GEOMETRY (COGO).

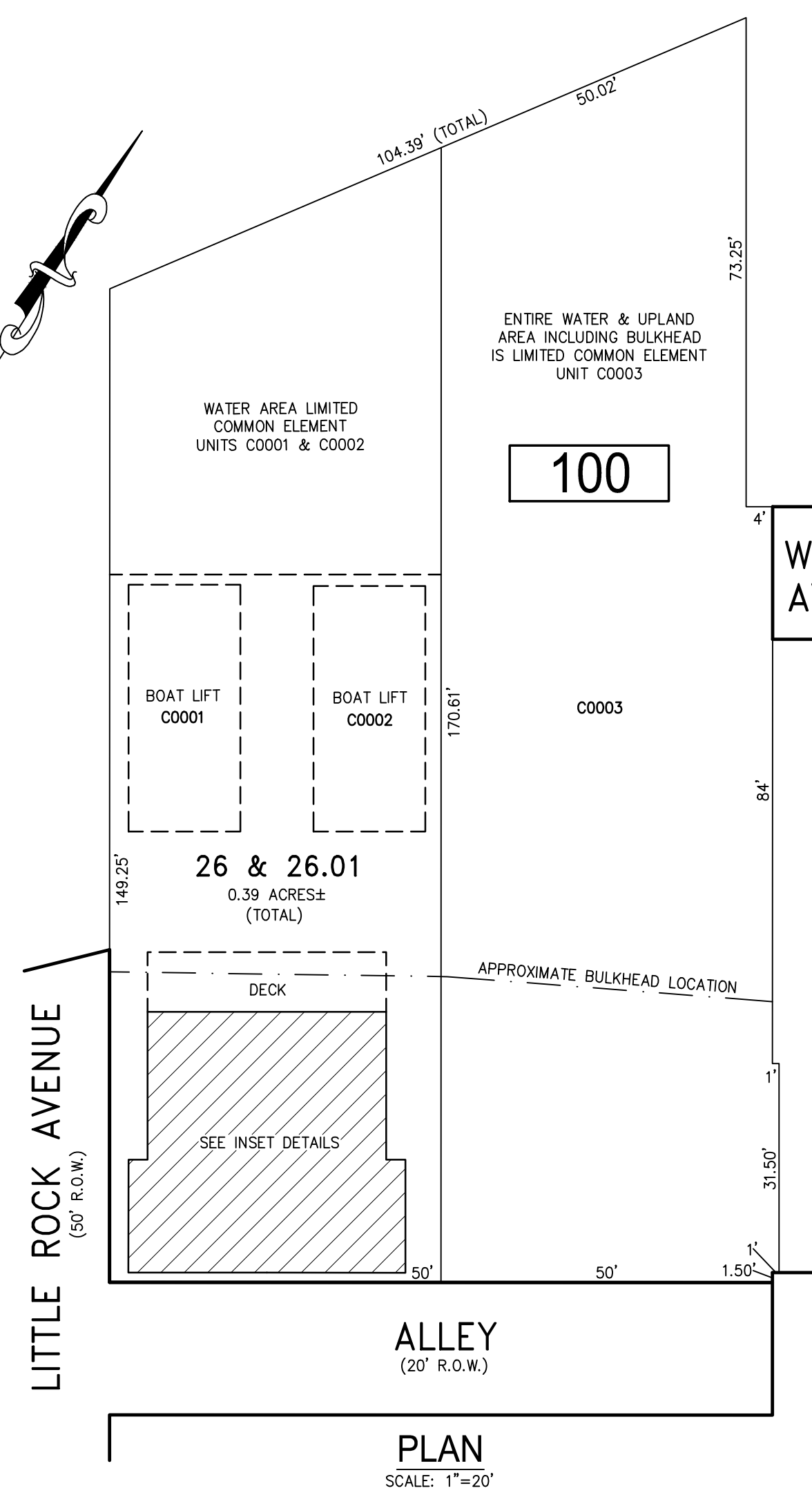
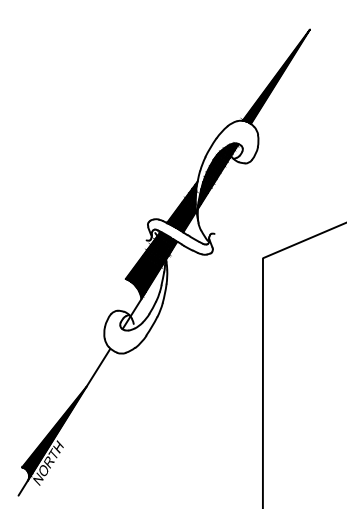


CONDO QUALIFIER	SQUARE FOOTAGE
C0001	1,364 SF.
C0002	1,364 SF.

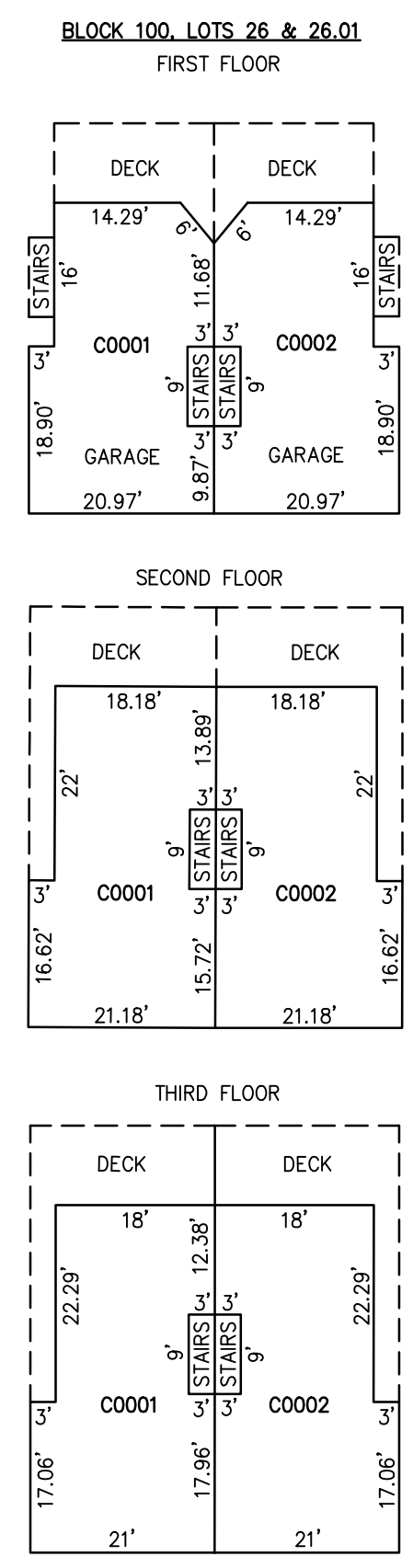
BLOCK 102, LOT 3
NORTH VICTORIA AVENUE CONDOMINIUM
1 NORTH VICTORIA AVENUE



BLOCK 98, LOT 6
NORTH HILLSIDE AVENUE CONDOMINIUM
8 NORTH HILLSIDE AVENUE



CONDO QUALIFIER	SQUARE FOOTAGE
C0001	2,120 SF.
C0002	2,120 SF.
C0003	8,799 SF.



BLOCK 100, LOT 26 & 26.01
NORTH LITTLE ROCK AVENUE CONDOMINIUM
105 NORTH LITTLE ROCK AVENUE

BLOCK 100, LOT 26 & 26.01
BLOCK 102, LOT 3
BLOCK 98, LOT 6
SEE SHEET 18

"THIS TAX MAP SHEET HAS BEEN DIGITALLY REVISED USING COMPUTER-AIDED DRAFTING/DESIGN (CADD) & COORDINATE GEOMETRY (COGO). IT IS BASED ON THE ORIGINAL DIGITALLY DRAWN TAX MAP PLATE BEARING THE OFFICIAL NEW JERSEY DIVISION TAXATION APPROVAL STAMP WITH APPROVAL DATE JULY, 20, 2016. SERIAL NUMBER 1070 AND SIGNATURE OF JUDY P. MILLER, C.T.A. CHIEF PROPERTY ADMINISTRATION AND SHELLY REILLY, C.T.A. PRINCIPAL FIELD REPRESENTATIVE. THE ORIGINAL DIGITALLY DRAWN TAX MAP PLATE WITH THE OFFICIAL APPROVAL STAMP IS ON FILE WITH REMINGTON & VERNICK ENGINEERS."

TAX MAP
CITY OF VENTNOR
ATLANTIC COUNTY NEW JERSEY
SCALE: NOTED DATE: 2-19-2015

CHARLES E. ADAMSON NJ PROFESSIONAL LAND SURVEYOR LIC. NO. 42627
24 GA 28048700

RV & W **REMINGTON, VERNICK & WALBERG ENGINEERS**
845 N. MAIN STREET, PLEASANTVILLE, NJ 08232
(609) 645-7100, FAX (609) 645-7076
WEB SITE ADDRESS: WWW.RVE.COM
TO SHOW CONDITIONS AS OF 2-10-2021