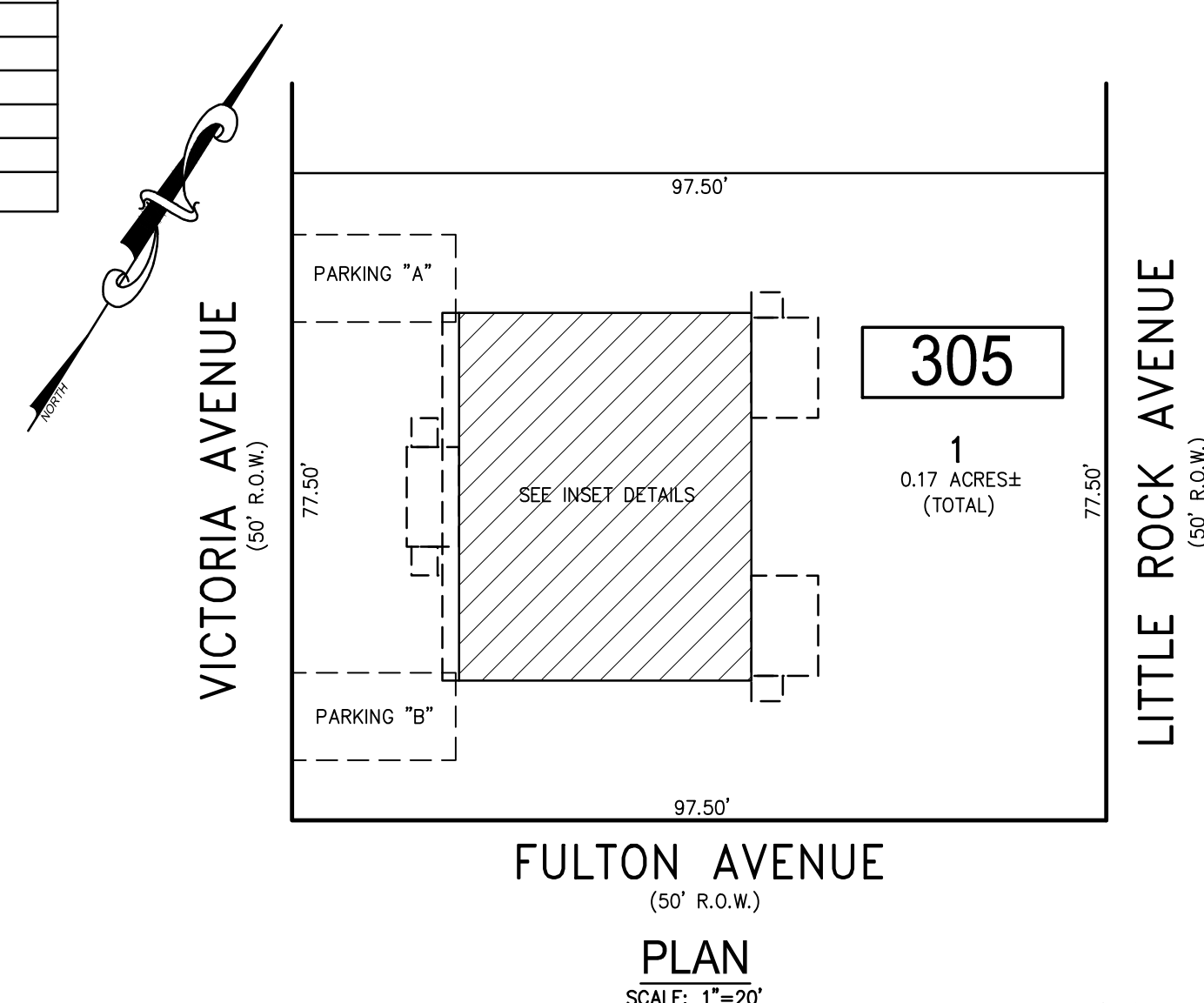
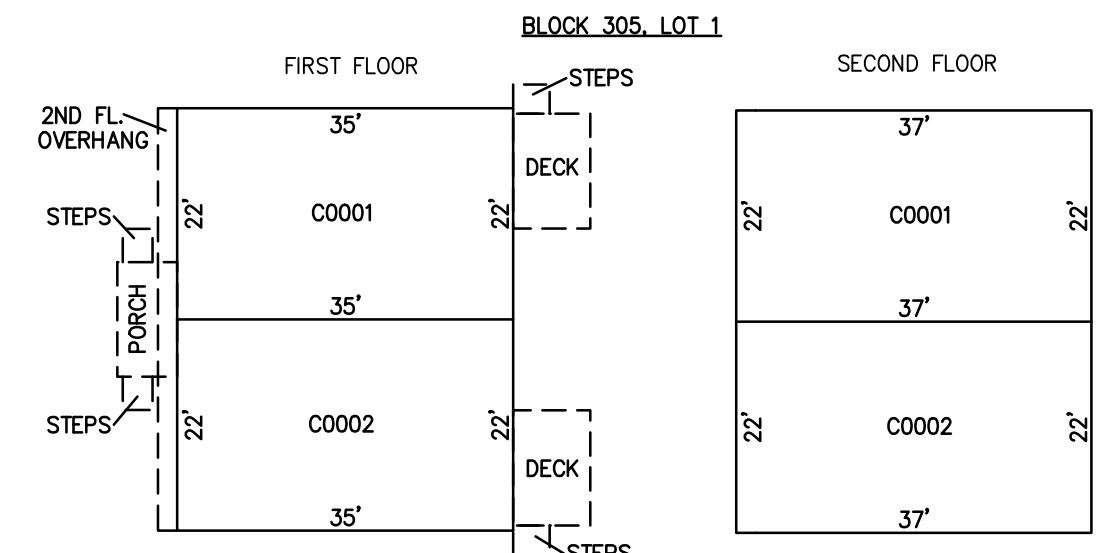


REVISIONS		
DATE	NAME	NO.

**NOTE:**  
THIS SHEET HAS BEEN DRAWN USING COMPUTER AIDED DRAFTING/DESIGN (CADD) AND COORDINATE GEOMETRY (COGO).



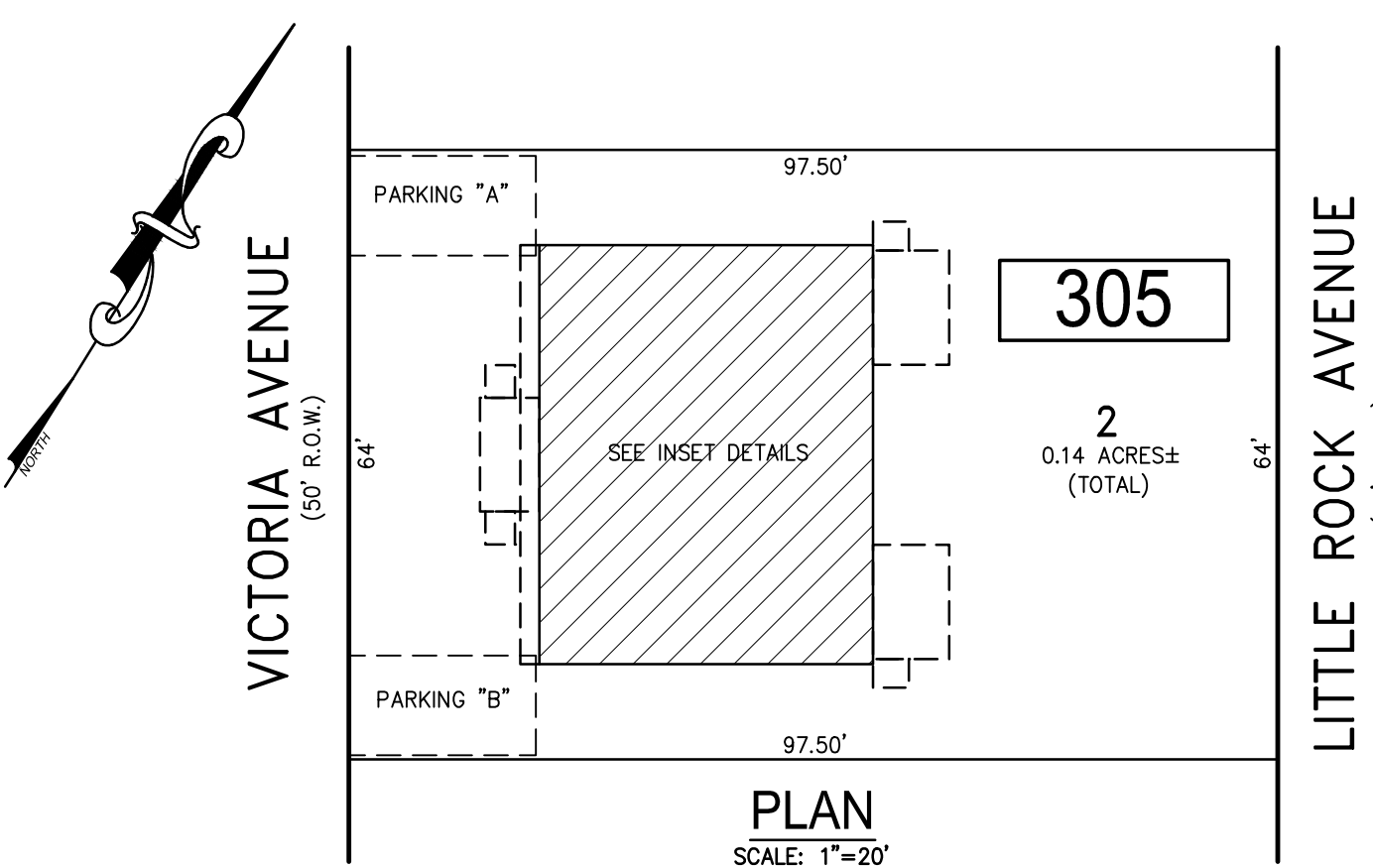
CONDO QUALIFIER	SQUARE FOOTAGE
C0001	1600 SF.
C0002	1600 SF.



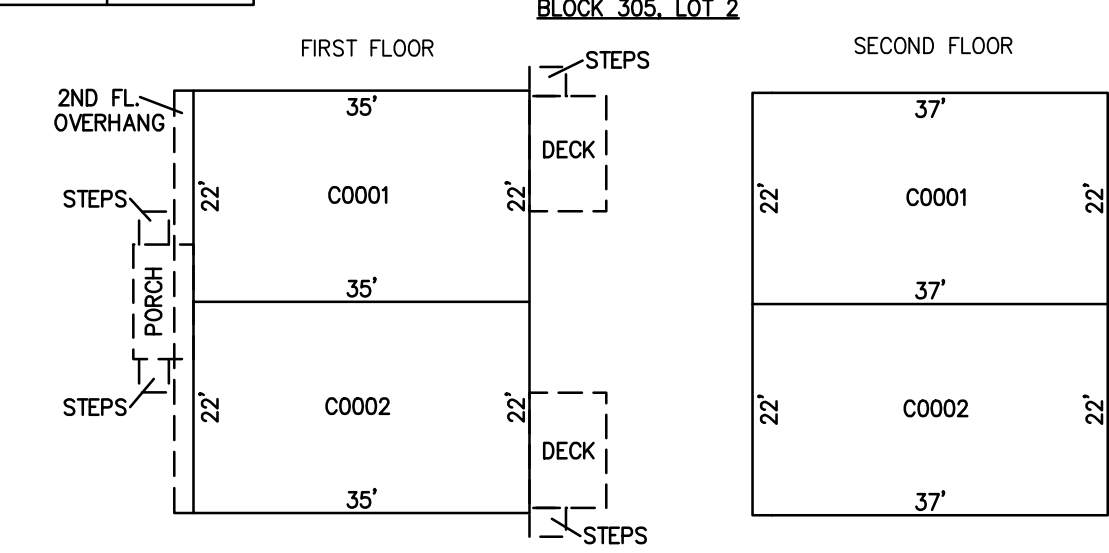
**DETAILS**  
SCALE: 1"=20'

**PLAN**  
SCALE: 1"=20'

**BLOCK 305, LOT 1**  
**THE VICTORIA XV CONDOMINIUM**  
601 N. VICTORIA AVENUE



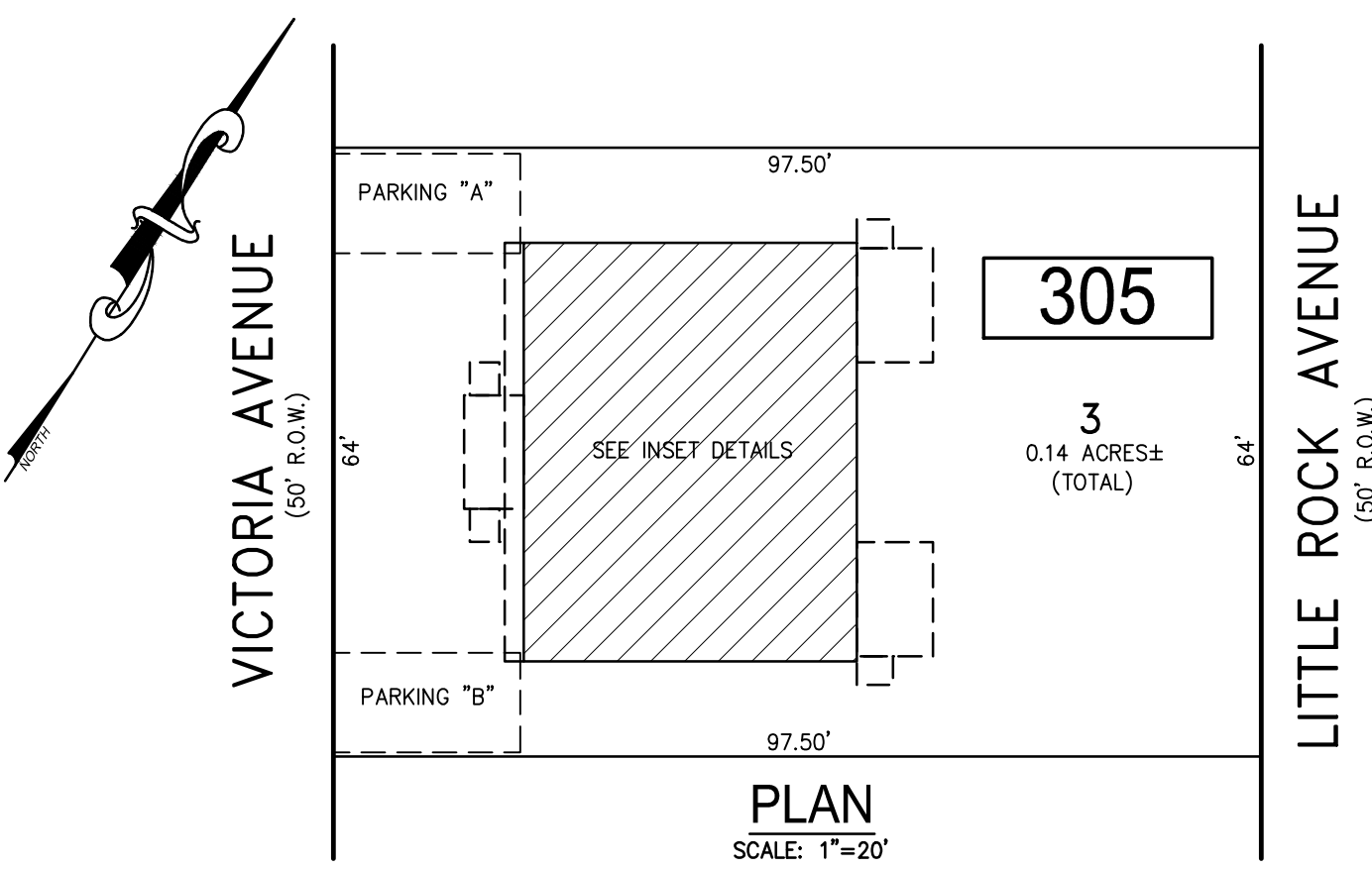
CONDO QUALIFIER	SQUARE FOOTAGE
C0001	1600 SF.
C0002	1600 SF.



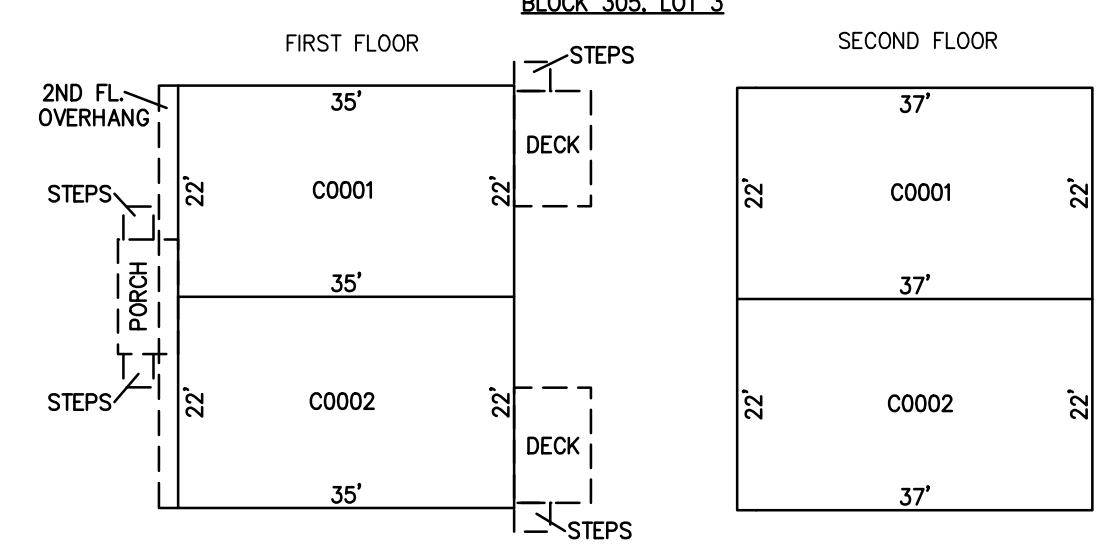
**DETAILS**  
SCALE: 1"=20'

**PLAN**  
SCALE: 1"=20'

**BLOCK 305, LOT 2**  
**THE VICTORIA XVI CONDOMINIUM**  
603 N. VICTORIA AVENUE



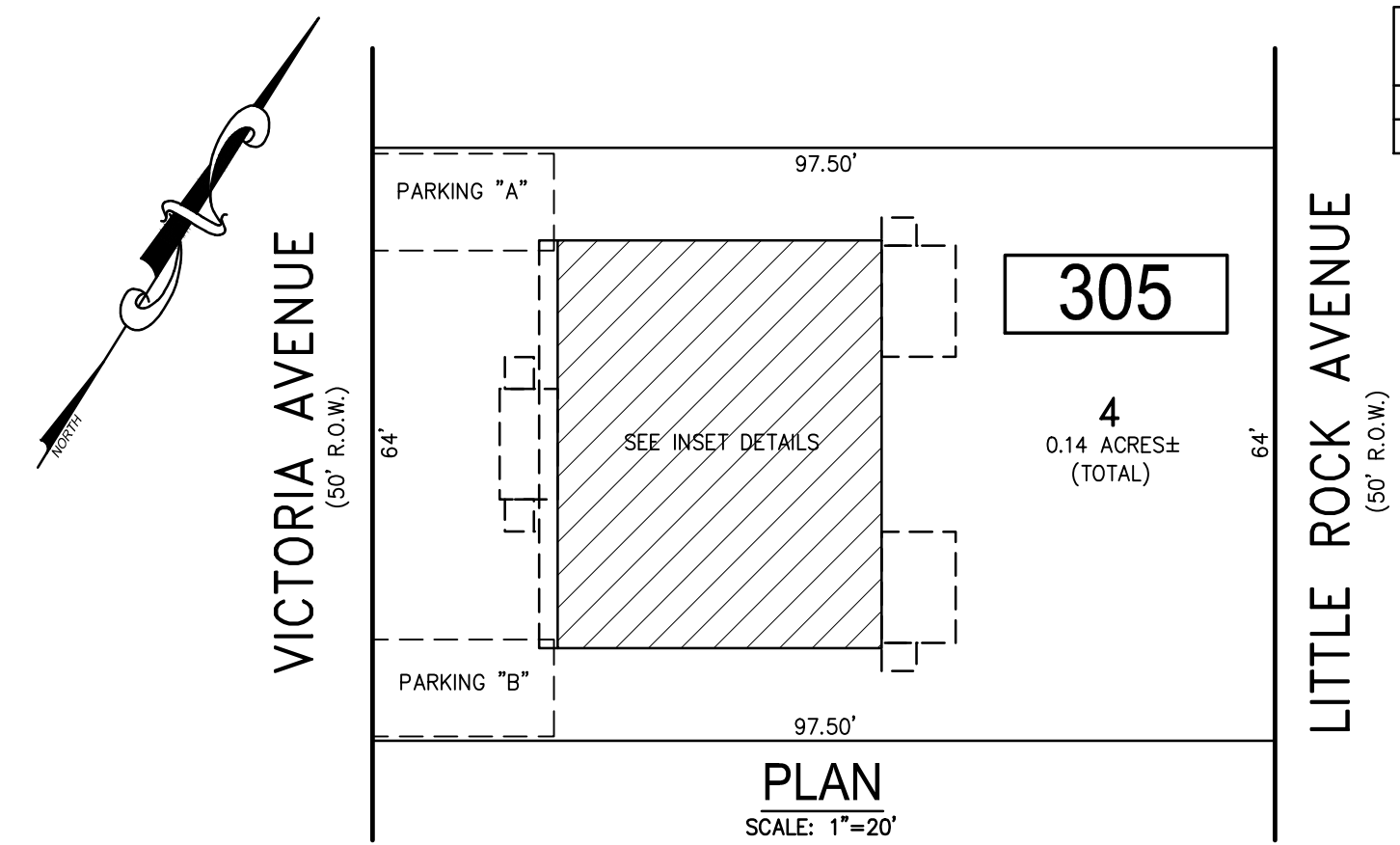
CONDO QUALIFIER	SQUARE FOOTAGE
C0001	1600 SF.
C0002	1600 SF.



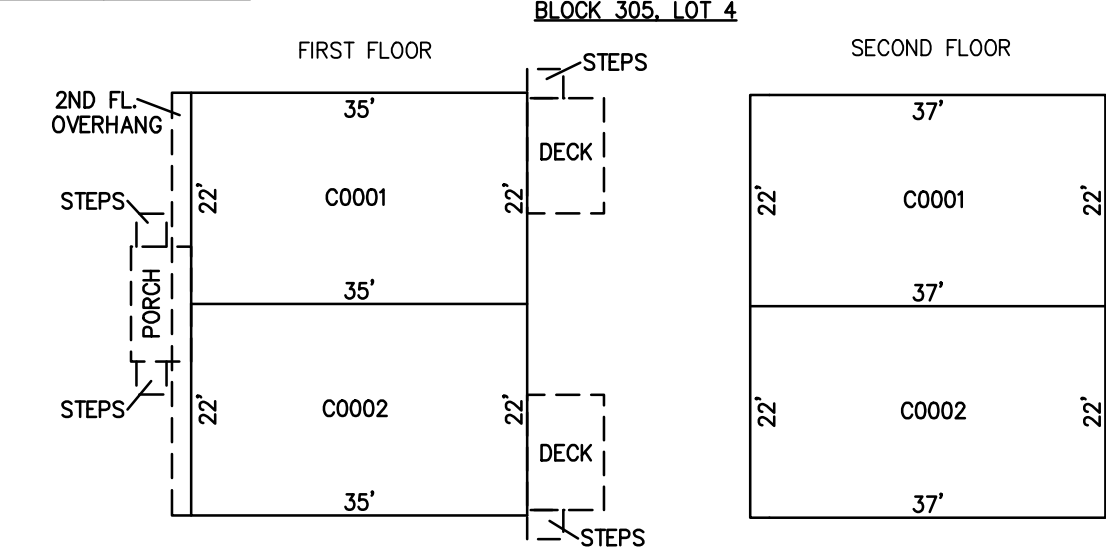
**DETAILS**  
SCALE: 1"=20'

**PLAN**  
SCALE: 1"=20'

**BLOCK 305, LOT 3**  
**THE VICTORIA XVII CONDOMINIUM**  
605 N. VICTORIA AVENUE



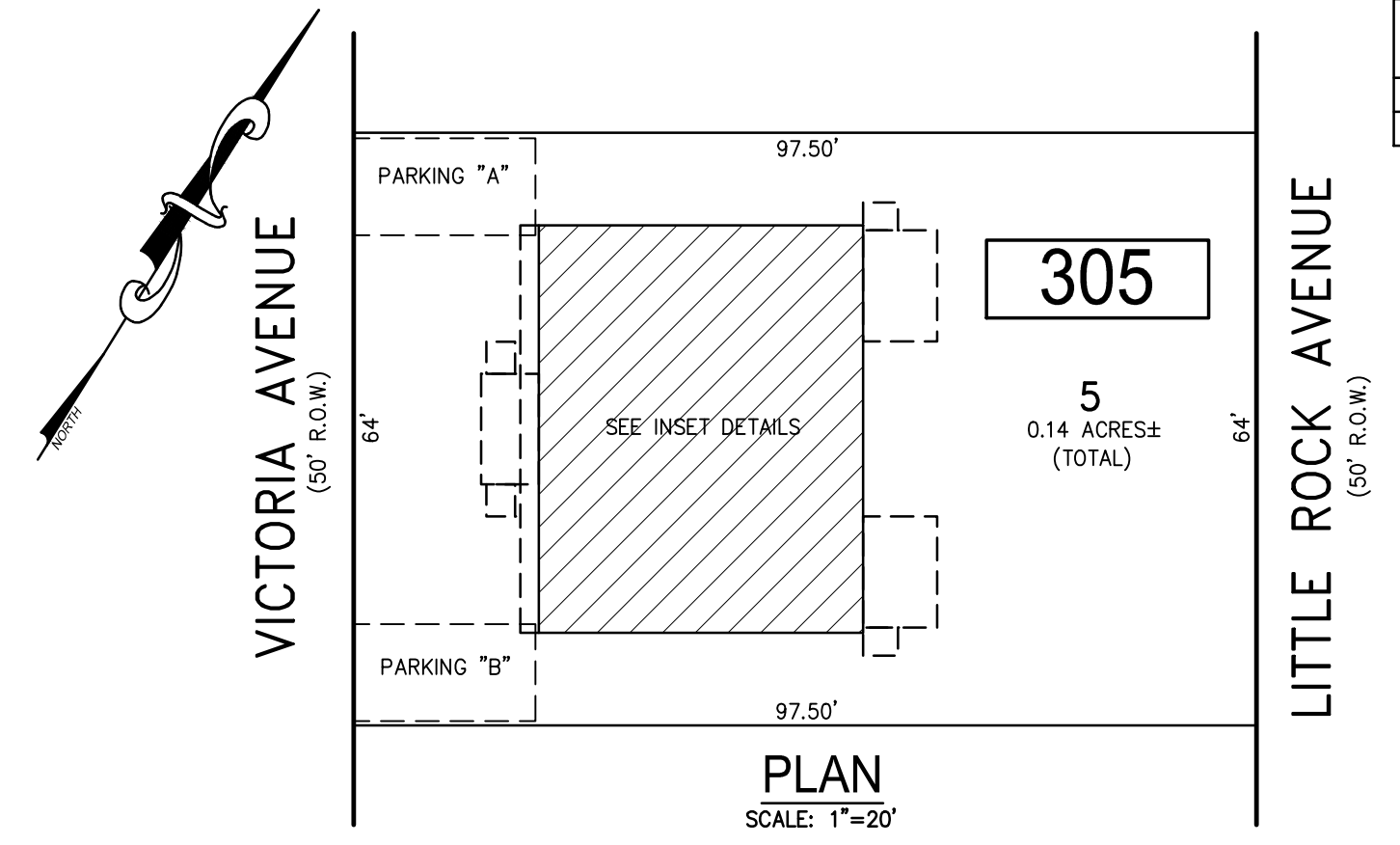
CONDO QUALIFIER	SQUARE FOOTAGE
C0001	1600 SF.
C0002	1600 SF.



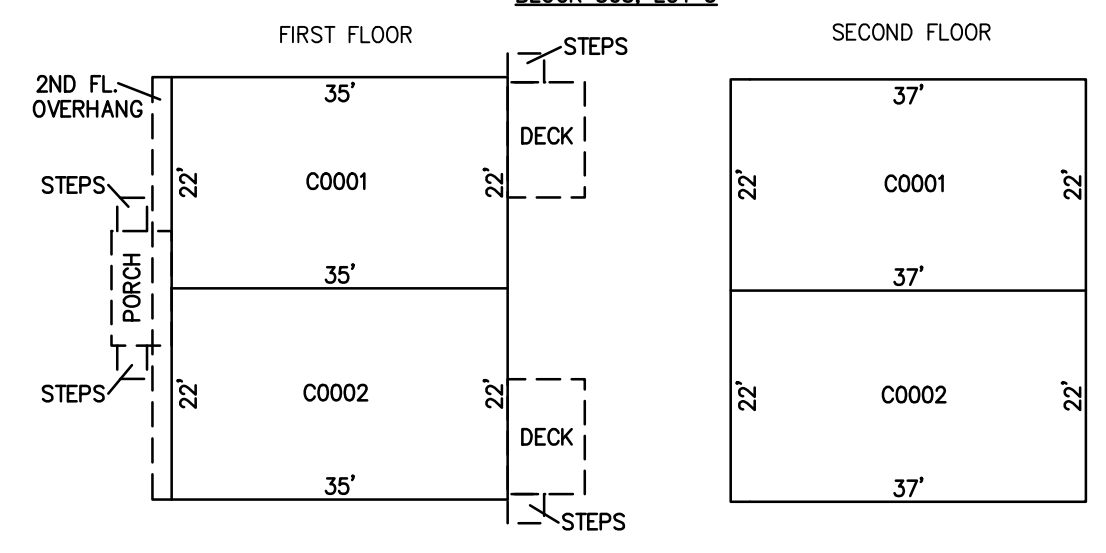
**DETAILS**  
SCALE: 1"=20'

**PLAN**  
SCALE: 1"=20'

**BLOCK 305, LOT 4**  
**THE VICTORIA XVIII CONDOMINIUM**  
607 N. VICTORIA AVENUE



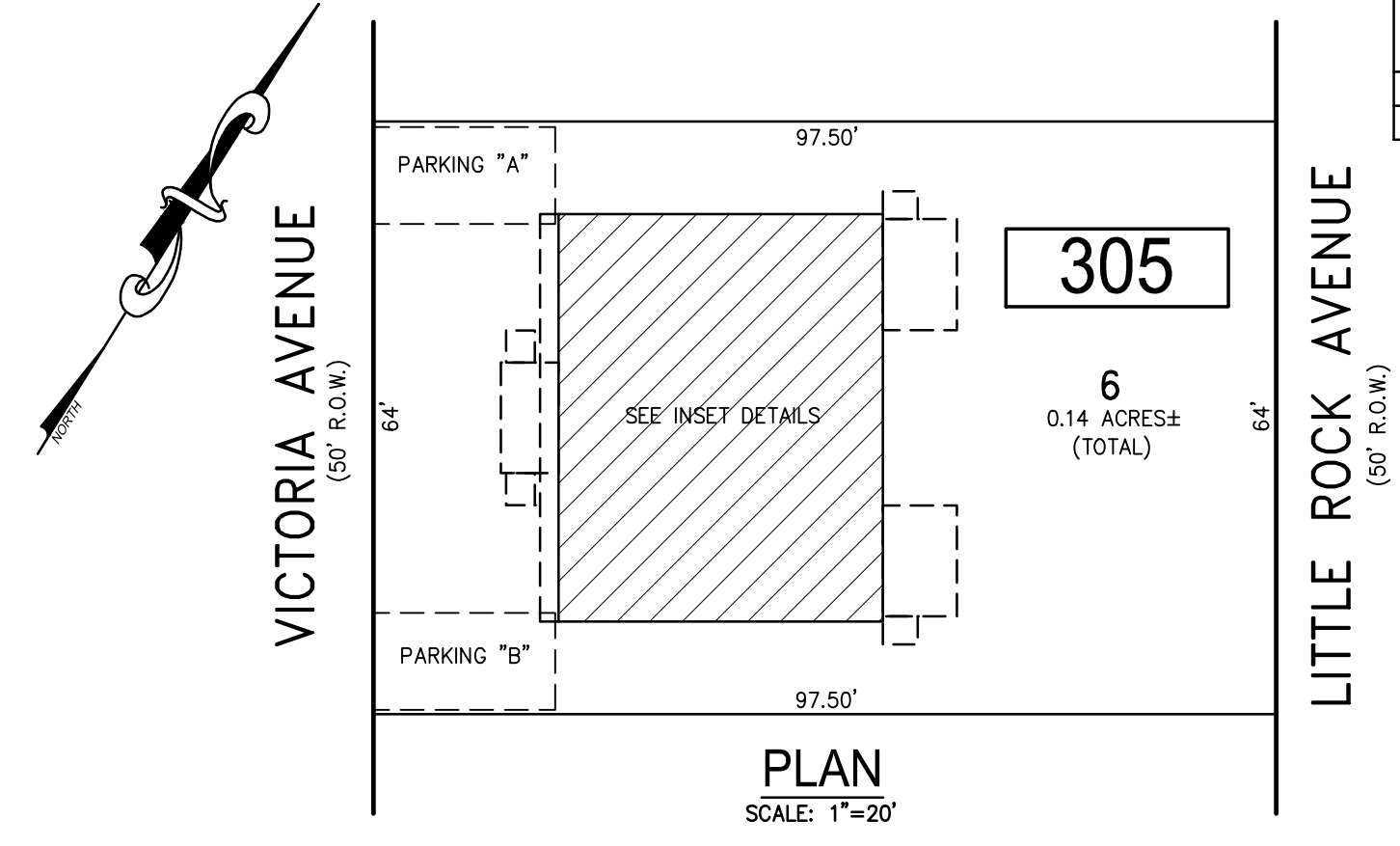
CONDO QUALIFIER	SQUARE FOOTAGE
C0001	1600 SF.
C0002	1600 SF.



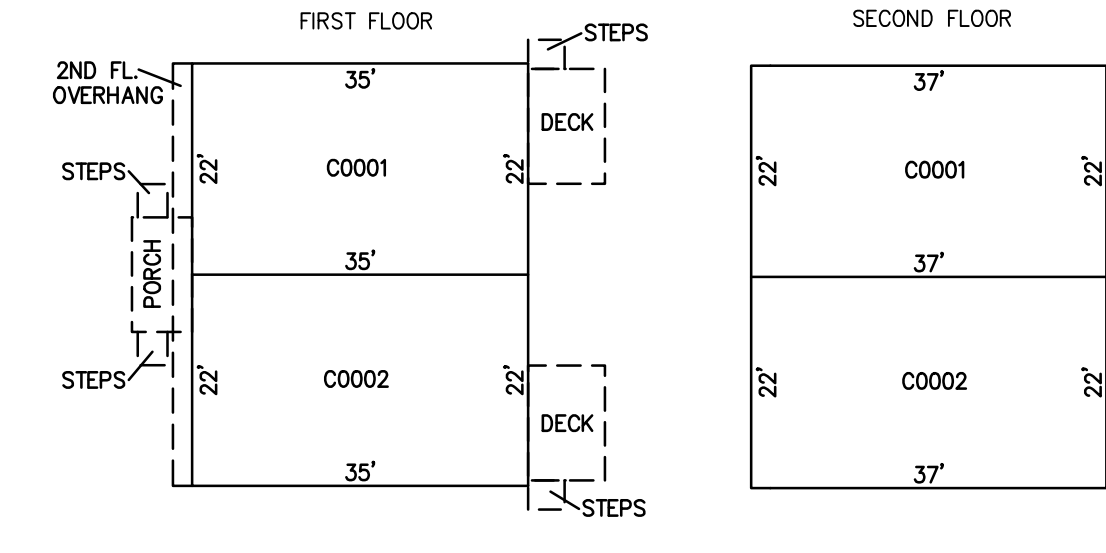
**DETAILS**  
SCALE: 1"=20'

**PLAN**  
SCALE: 1"=20'

**BLOCK 305, LOT 5**  
**THE VICTORIA XIX CONDOMINIUM**  
609 N. VICTORIA AVENUE



CONDO QUALIFIER	SQUARE FOOTAGE
C0001	1600 SF.
C0002	1600 SF.



**DETAILS**  
SCALE: 1"=20'

**PLAN**  
SCALE: 1"=20'

**BLOCK 305, LOT 6**  
**THE VICTORIA XX CONDOMINIUM**  
611 N. VICTORIA AVENUE

- BLOCK 305, LOT 1
- BLOCK 305, LOT 2
- BLOCK 305, LOT 3
- BLOCK 305, LOT 4
- BLOCK 305, LOT 5
- BLOCK 305, LOT 6
- SEE SHEET 50

"THIS TAX MAP SHEET HAS BEEN DIGITALLY REVISED USING COMPUTER-AIDED DRAFTING/DESIGN (CADD) & COORDINATE GEOMETRY (COGO). IT IS BASED ON THE ORIGINAL DIGITALLY DRAWN TAX MAP PLATE BEARING THE OFFICIAL NEW JERSEY DIVISION TAXATION APPROVAL STAMP WITH APPROVAL DATE JULY, 20, 2016. SERIAL NUMBER 1070 AND SIGNATURE OF JUDY P. MILLER, CTA, CHIEF PROPERTY ADMINISTRATION AND SHELLY REILLY, CTA, PRINCIPAL FIELD REPRESENTATIVE. THE ORIGINAL DIGITALLY DRAWN TAX MAP PLATE WITH THE OFFICIAL APPROVAL STAMP IS ON FILE WITH REMINGTON & VERNICK ENGINEERS."

**TAX MAP**  
**CITY OF VENTNOR**  
ATLANTIC COUNTY NEW JERSEY  
SCALE: NOTED DATE: 2-19-2015

**CHARLES E. ADAMSON** NJ PROFESSIONAL LAND SURVEYOR LIC. NO. 42627  
24 GA 28048700

**REMINGTON, VERNICK & WALBERG ENGINEERS**  
845 N. MAIN STREET, PLEASANTVILLE, NJ 08232  
(609) 645-700, FAX (609) 645-7076  
WEB SITE ADDRESS: WWW.RVW.COM  
TO SHOW CONDITIONS AS OF 2-19-2019