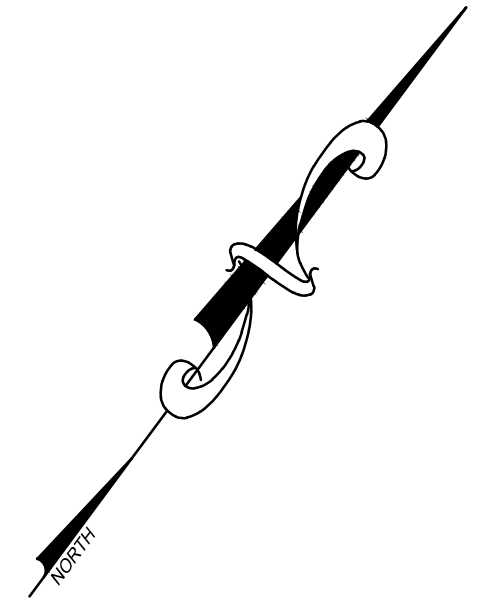
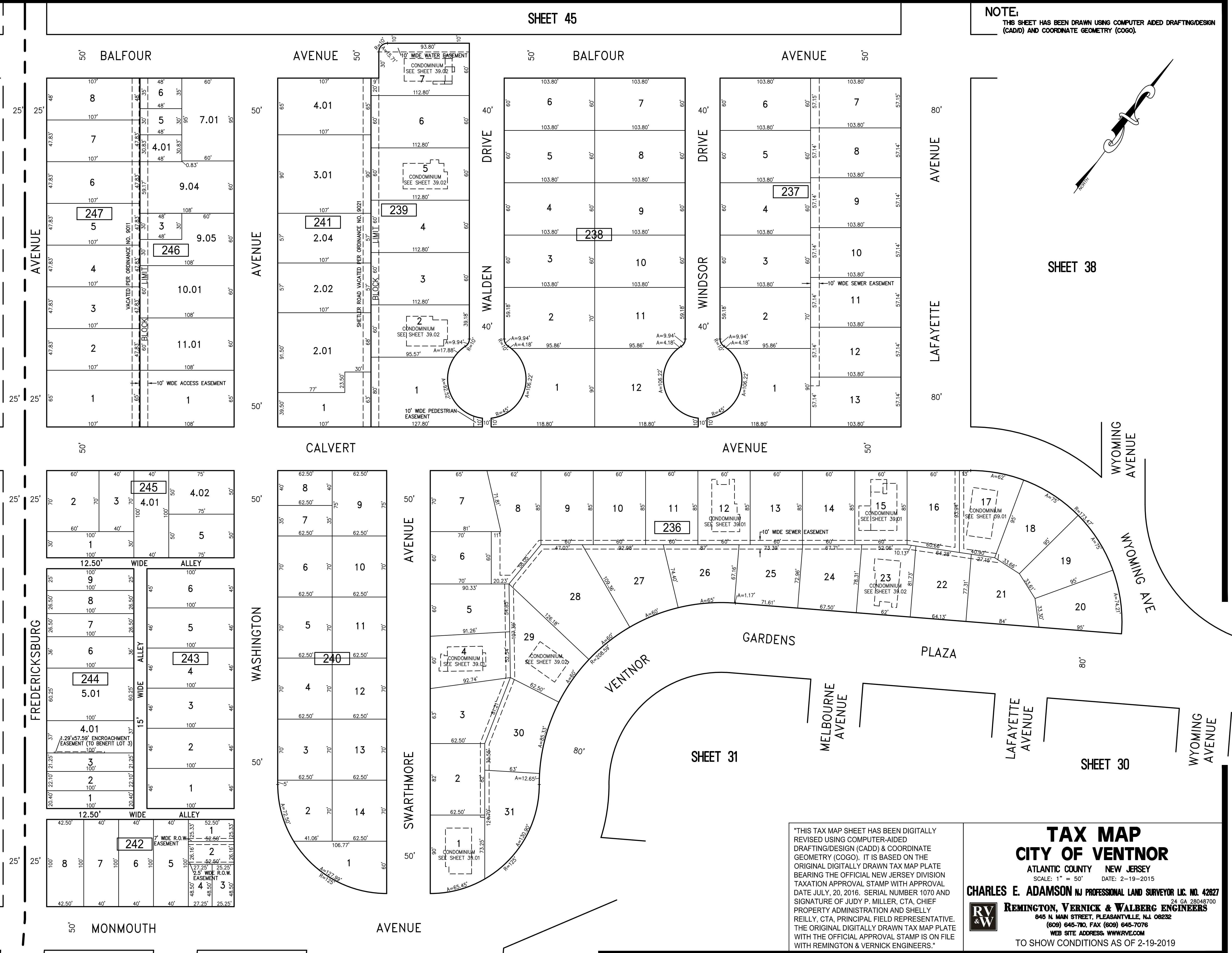


NOTE: THIS SHEET HAS BEEN DRAWN USING COMPUTER AIDED DRAFTING/DESIGN (CADD) AND COORDINATE GEOMETRY (COGO).

REVISIONS		
DATE	NAME	NO.
1-21-2019	CHARLES E. ADAMSON	42627

CITY OF MARGATE  
COUNTY OF ATLANTIC

SHEET 45



SHEET 38

WYOMING AVENUE


WYOMING AVE

SHEET 30

LAFAYETTE AVENUE

WYOMING AVENUE

"THIS TAX MAP SHEET HAS BEEN DIGITALLY REVISED USING COMPUTER-AIDED DRAFTING/DESIGN (CADD) & COORDINATE GEOMETRY (COGO). IT IS BASED ON THE ORIGINAL DIGITALLY DRAWN TAX MAP PLATE BEARING THE OFFICIAL NEW JERSEY DIVISION TAXATION APPROVAL STAMP WITH APPROVAL DATE JULY, 20, 2016, SERIAL NUMBER 1070 AND SIGNATURE OF JUDY P. MILLER, C.T.A. CHIEF PROPERTY ADMINISTRATION AND SHELLY REILLY, C.T.A. PRINCIPAL FIELD REPRESENTATIVE. THE ORIGINAL DIGITALLY DRAWN TAX MAP PLATE WITH THE OFFICIAL APPROVAL STAMP IS ON FILE WITH REMINGTON & VERNICK ENGINEERS."

**TAX MAP**  
**CITY OF VENTNOR**  
 ATLANTIC COUNTY NEW JERSEY  
 SCALE: 1" = 50' DATE: 2-19-2015  
**CHARLES E. ADAMSON** NJ PROFESSIONAL LAND SURVEYOR LIC. NO. 42627  
 **REMINGTON, VERNICK & WALBERG ENGINEERS**  
 845 N. MAIN STREET, PLEASANTVILLE, NJ 08232  
 (609) 645-7700, FAX (609) 645-7076  
 WEB SITE ADDRESS: WWW.RVW.COM  
 TO SHOW CONDITIONS AS OF 2-19-2015

MARTINDALE AVENUE

WASHINGTON AVENUE SHEET 31

SWARTHMORE AVENUE