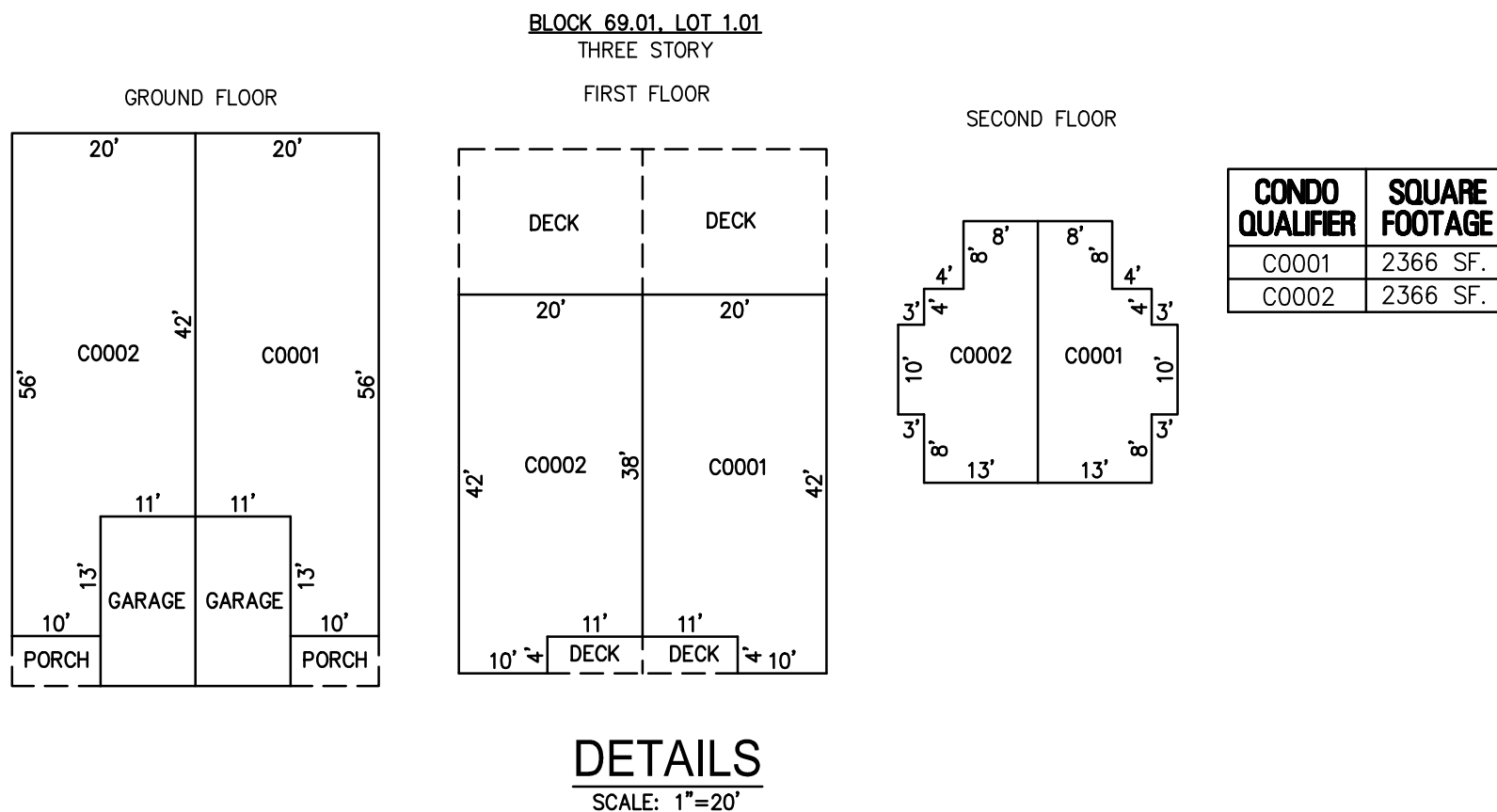
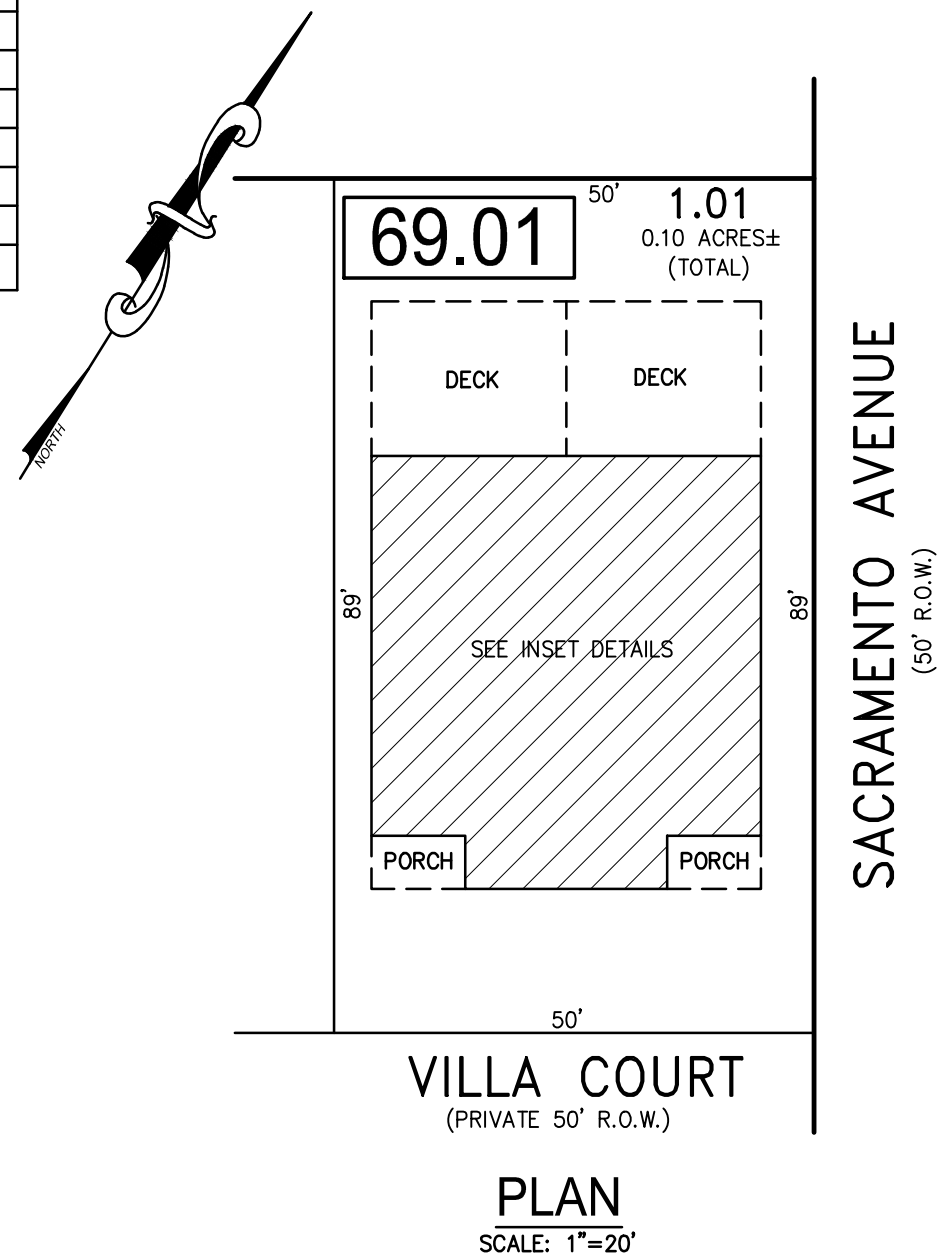
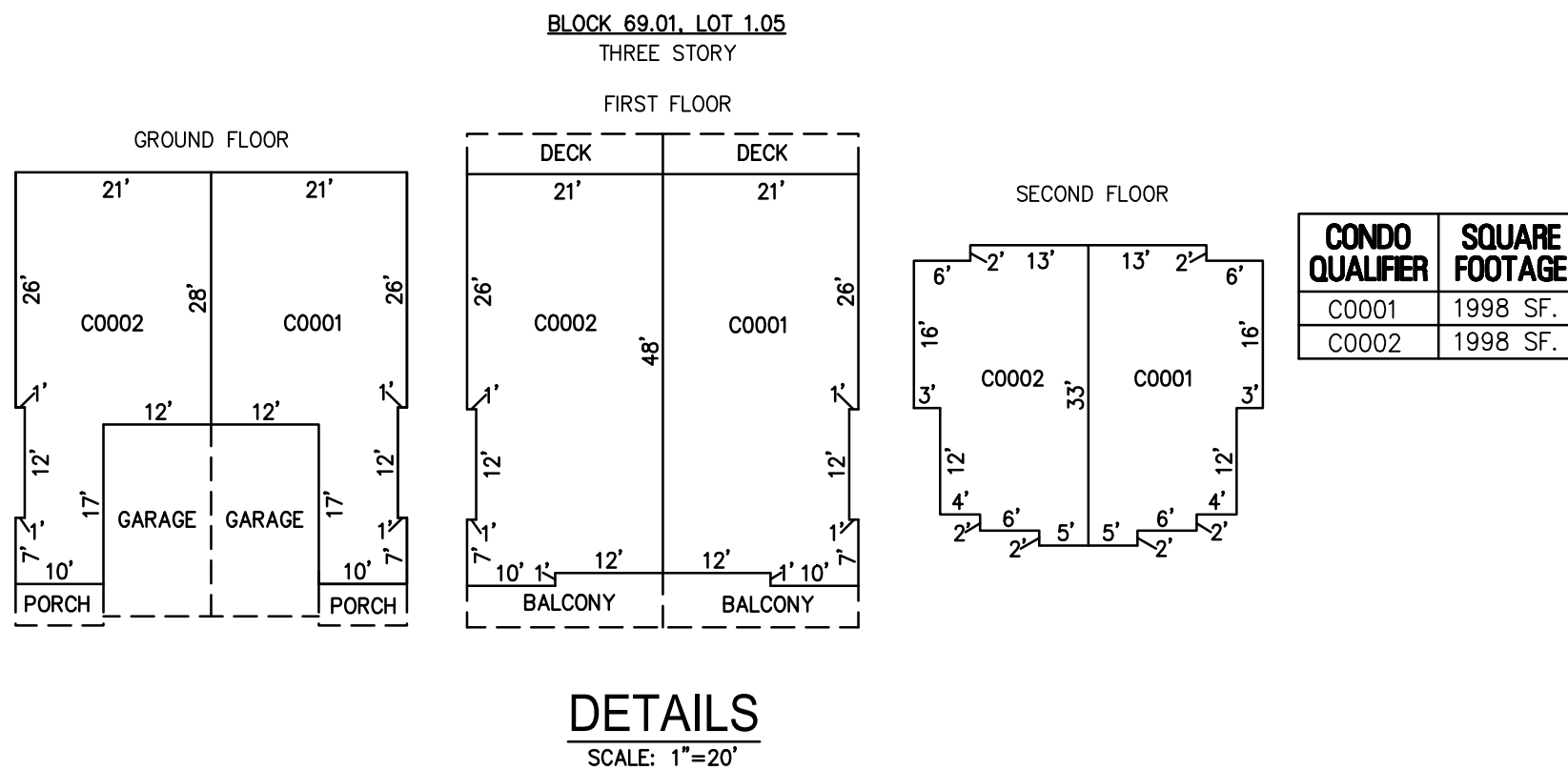
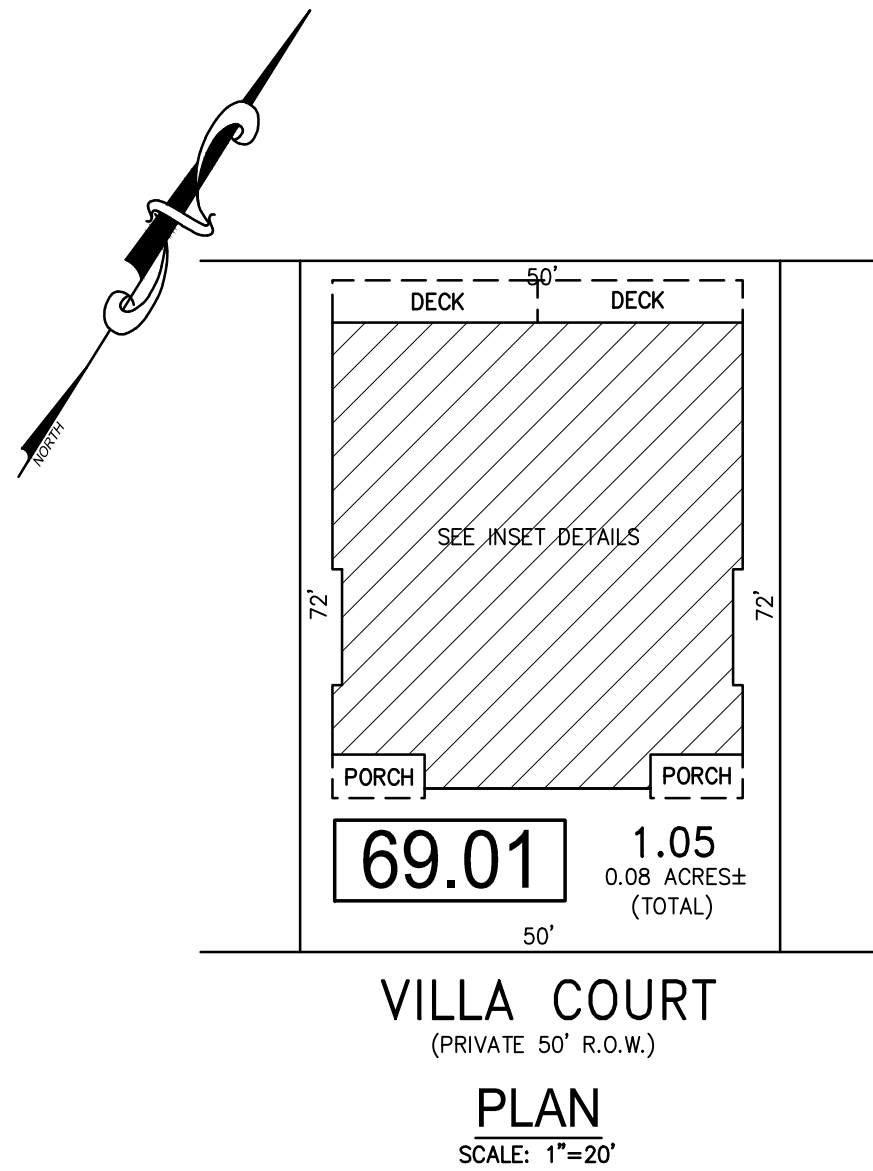


REVISIONS		
DATE	NAME	NO.

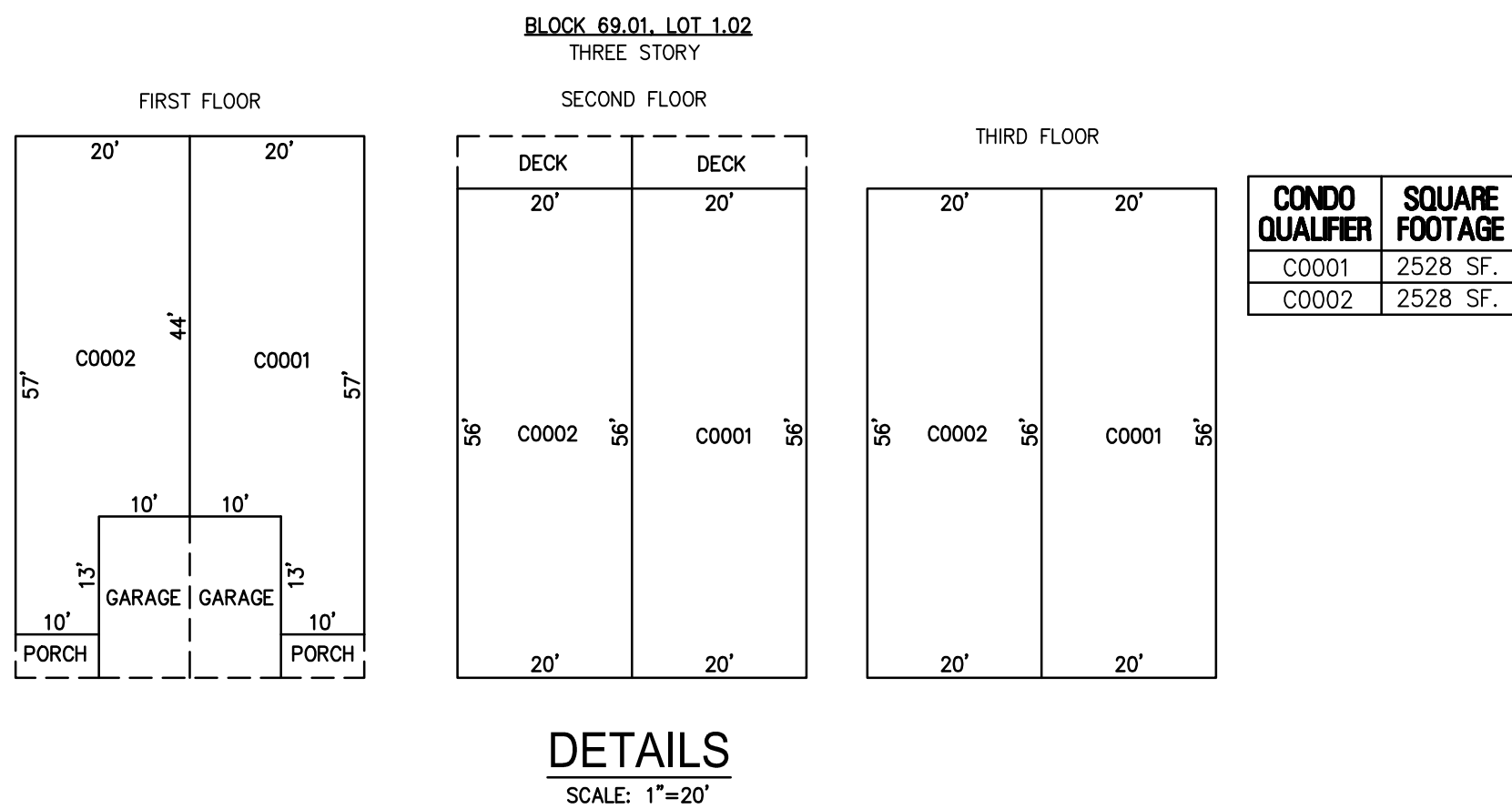
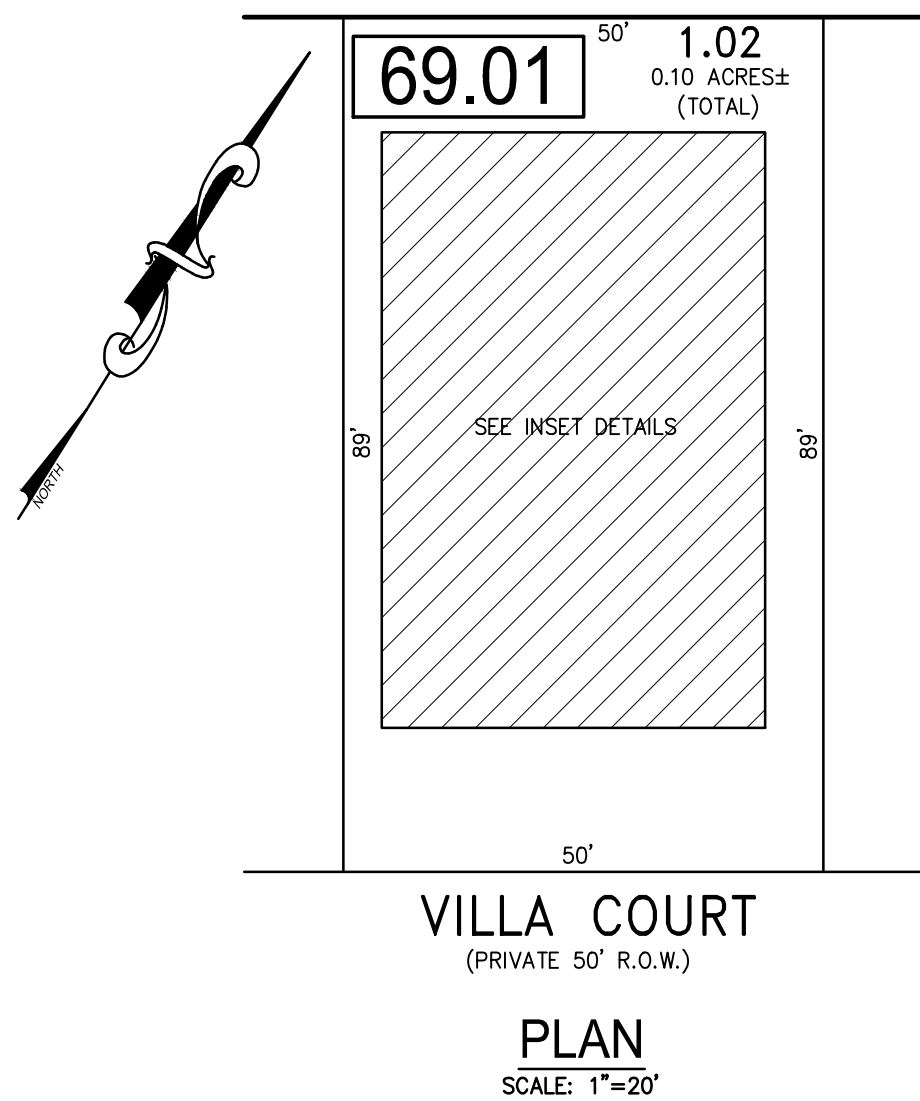
NOTE:
THIS SHEET HAS BEEN DRAWN USING COMPUTER AIDED DRAFTING/DESIGN (CAD/D) AND COORDINATE GEOMETRY (COGO).



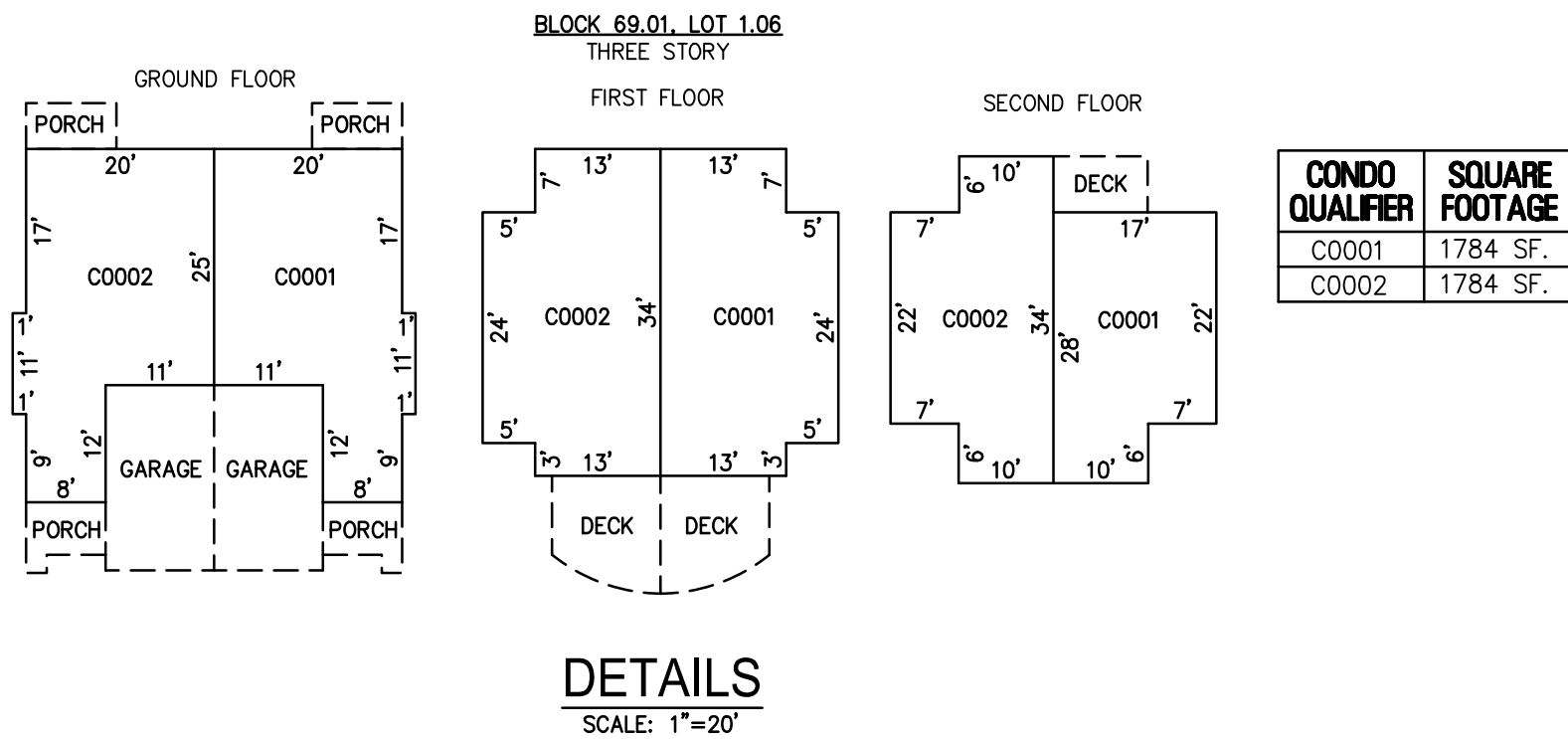
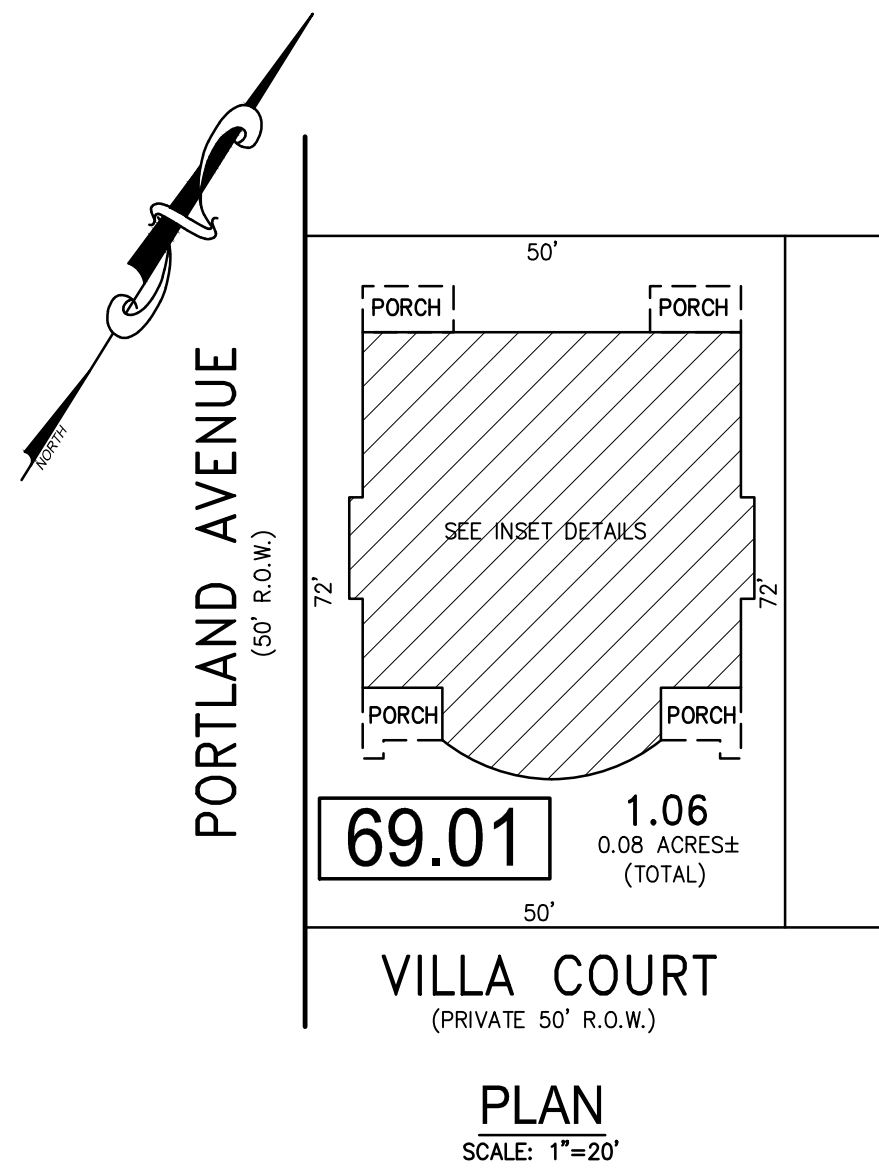
BLOCK 69.01, LOT 1.01
OCEAN VILLA 6301-6303 VILLA COURT CONDOMINIUM



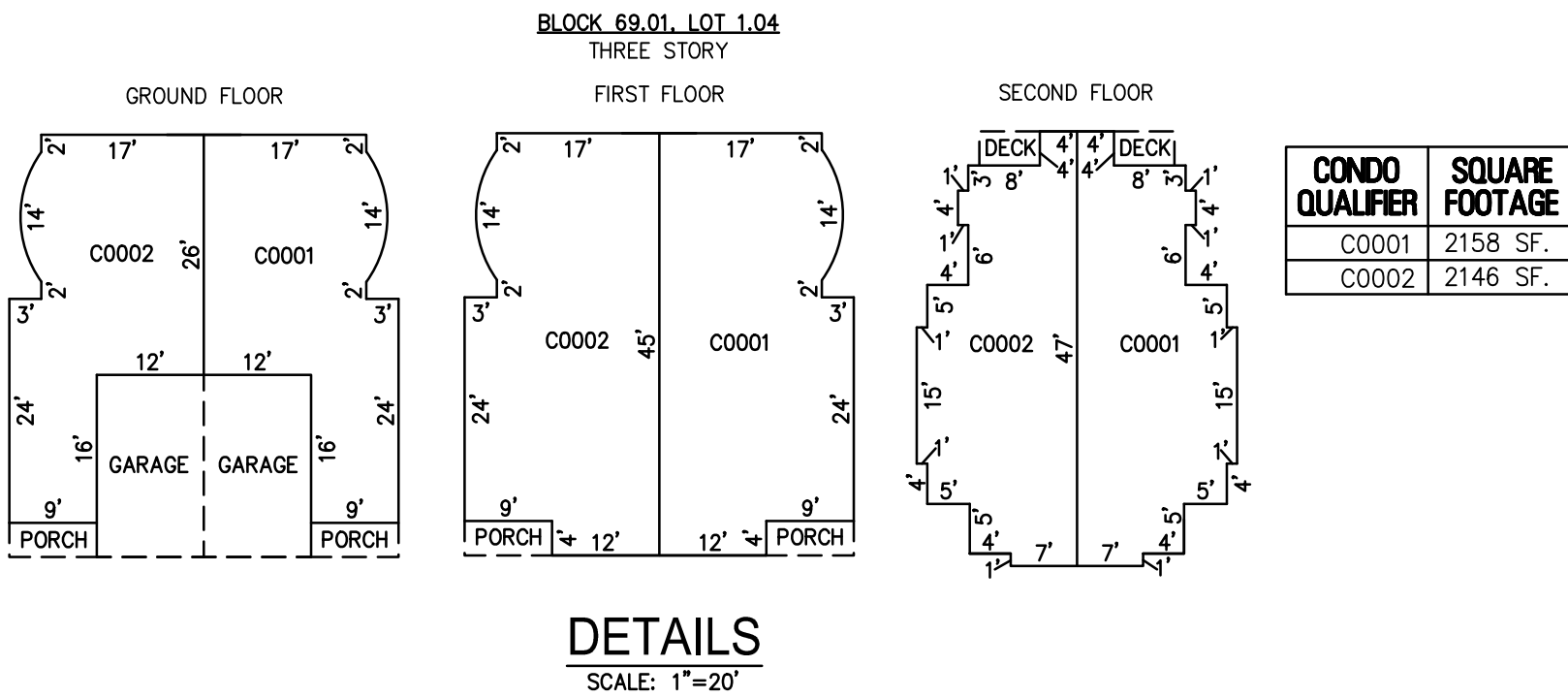
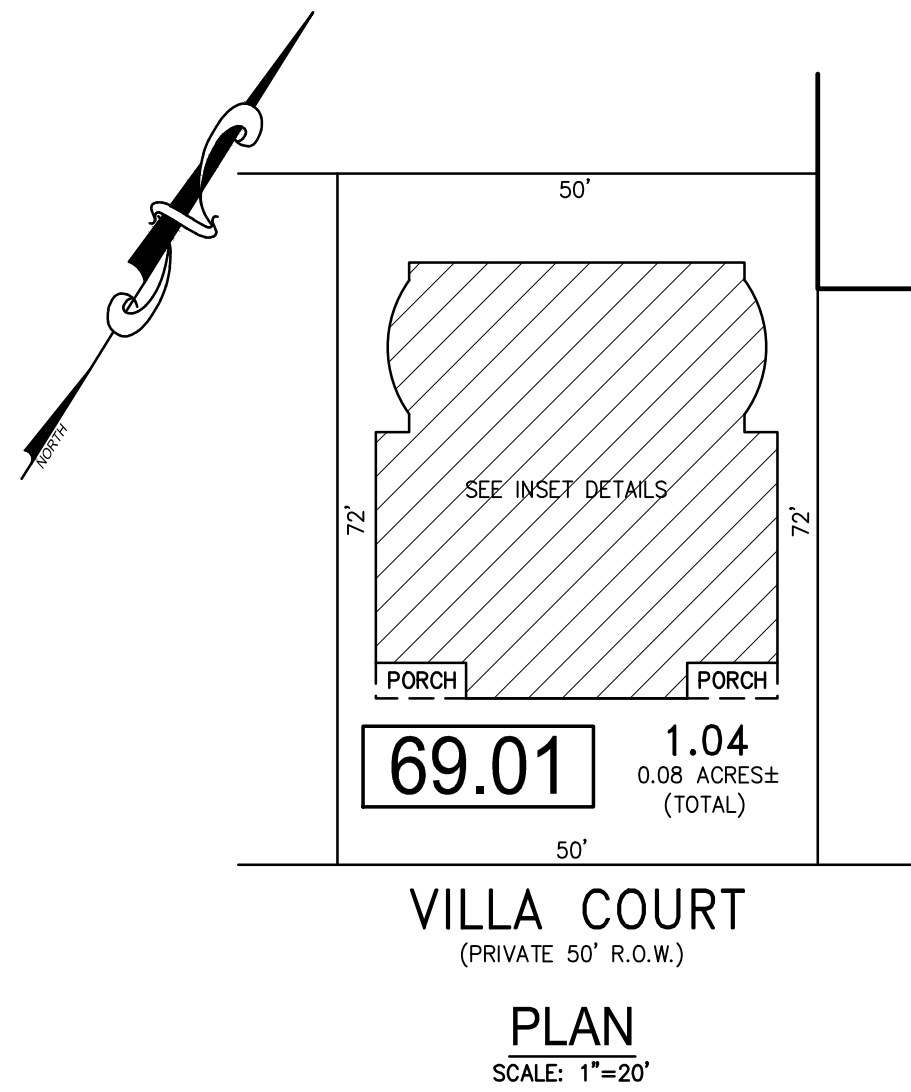
BLOCK 69.01, LOT 1.05
OCEAN VILLA 6313-6315 VILLA COURT CONDOMINIUM



BLOCK 69.01, LOT 1.02
OCEAN VILLA 6305-6307 VILLA COURT CONDOMINIUM



BLOCK 69.01, LOT 1.06
OCEAN VILLA 6317-6319 VILLA COURT CONDOMINIUM



BLOCK 69.01, LOT 1.04
OCEAN VILLA 6309-6311 VILLA COURT CONDOMINIUM

BLOCK 69.01, LOT 1.01
BLOCK 69.01, LOT 1.02
BLOCK 69.01, LOT 1.04
BLOCK 69.01, LOT 1.05
BLOCK 69.01, LOT 1.06
SEE SHEET 13

"THIS TAX MAP SHEET HAS BEEN DIGITALLY REVISED USING COMPUTER-AIDED DRAFTING/DESIGN (CADD) & COORDINATE GEOMETRY (COGO). IT IS BASED ON THE ORIGINAL DIGITALLY DRAWN TAX MAP PLATE BEARING THE OFFICIAL NEW JERSEY DIVISION TAXATION APPROVAL STAMP WITH APPROVAL DATE JULY, 20, 2016. SERIAL NUMBER 1070 AND SIGNATURE OF JUDY P. MILLER, CTA, CHIEF PROPERTY ADMINISTRATION AND SHELLY REILLY, CTA, PRINCIPAL FIELD REPRESENTATIVE. THE ORIGINAL DIGITALLY DRAWN TAX MAP PLATE WITH THE OFFICIAL APPROVAL STAMP IS ON FILE WITH REMINGTON & VERNICK ENGINEERS."

TAX MAP


CITY OF VENTNOR

ATLANTIC COUNTY NEW JERSEY

SCALE: NOTED DATE: 2-19-2015

CHARLES E. ADAMSON NJ PROFESSIONAL LAND SURVEYOR LIC. NO. 42627

24 GA 28048700

 REMINGTON, VERNICK & WALBERG ENGINEERS

845 N. MAIN STREET, PLEASANTVILLE, N.J. 08232

(609) 645-7700, FAX (609) 645-7076

WEB SITE ADDRESS: WWW.RVWE.COM

TO SHOW CONDITIONS AS OF 2-19-2019