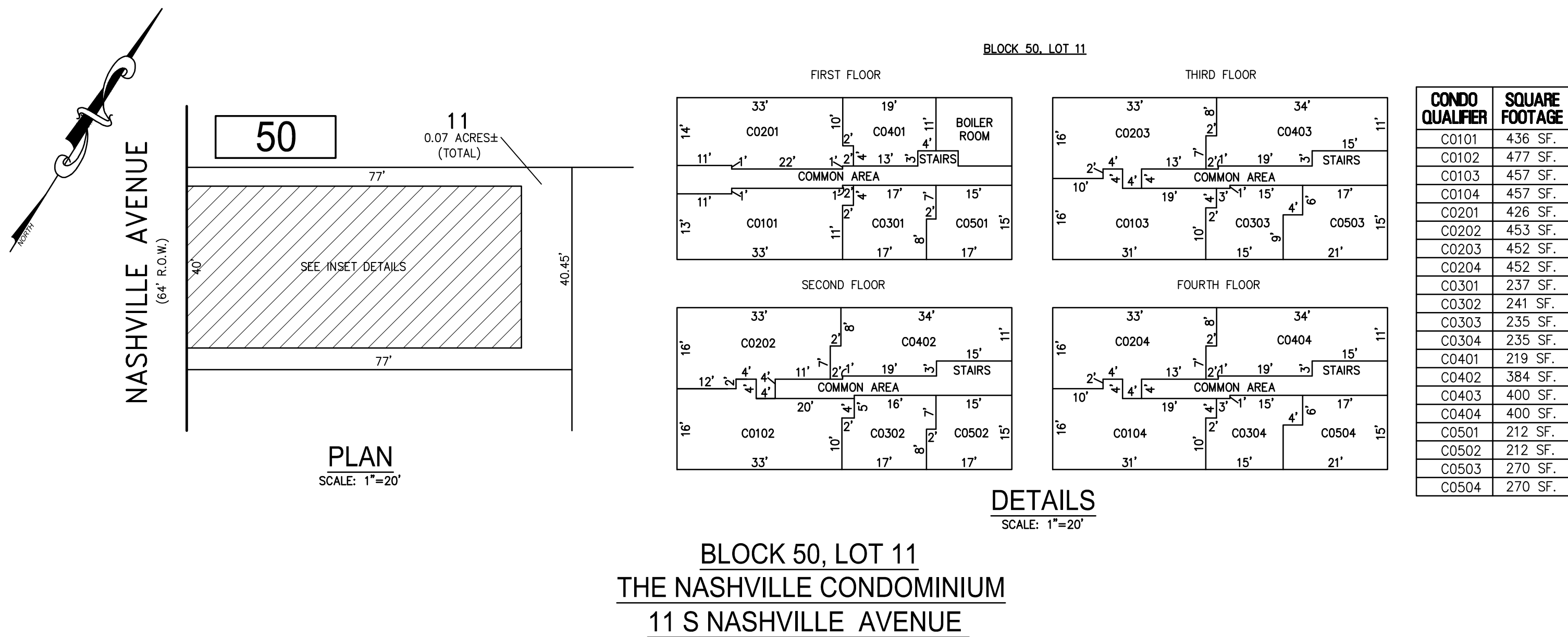
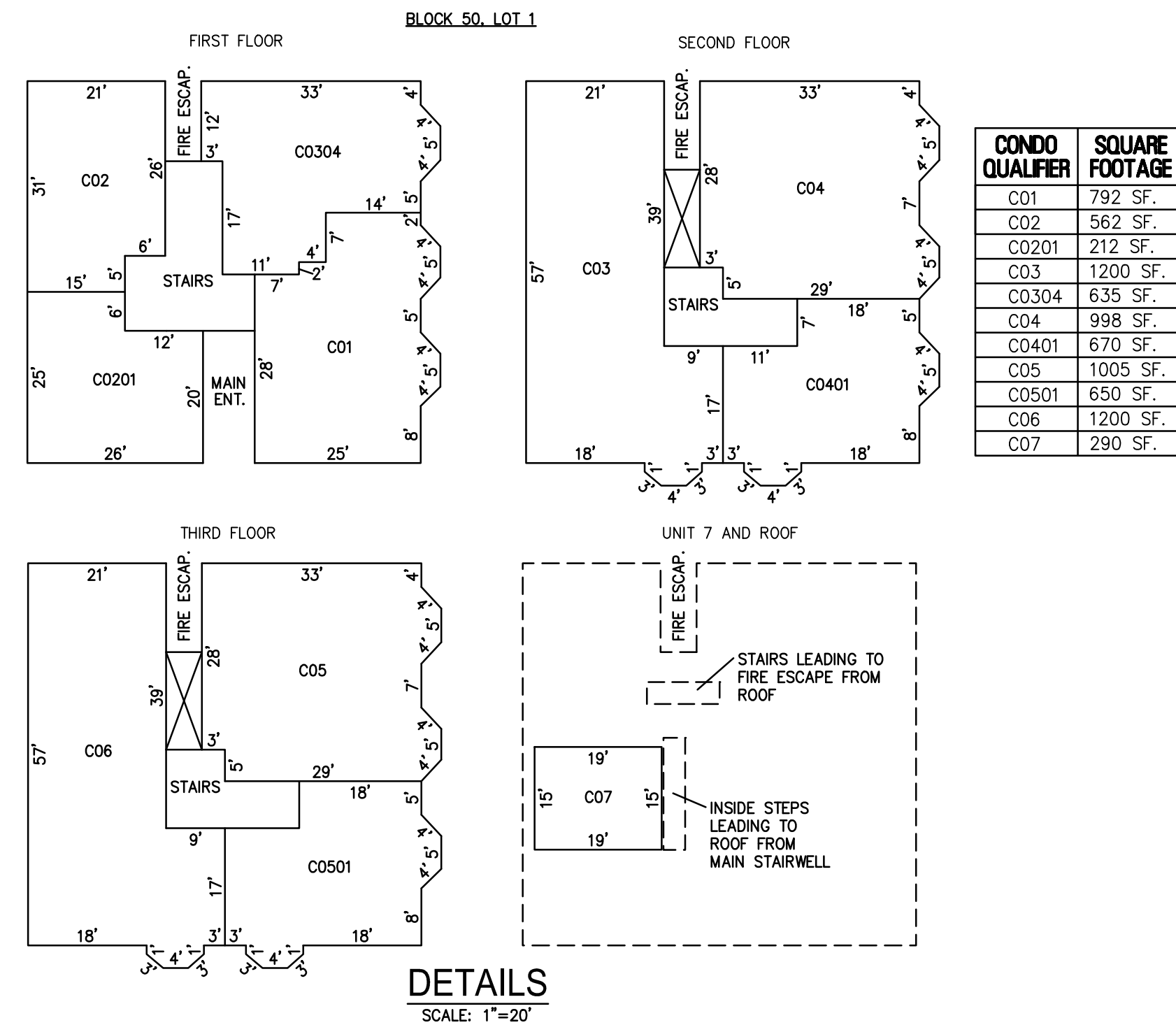
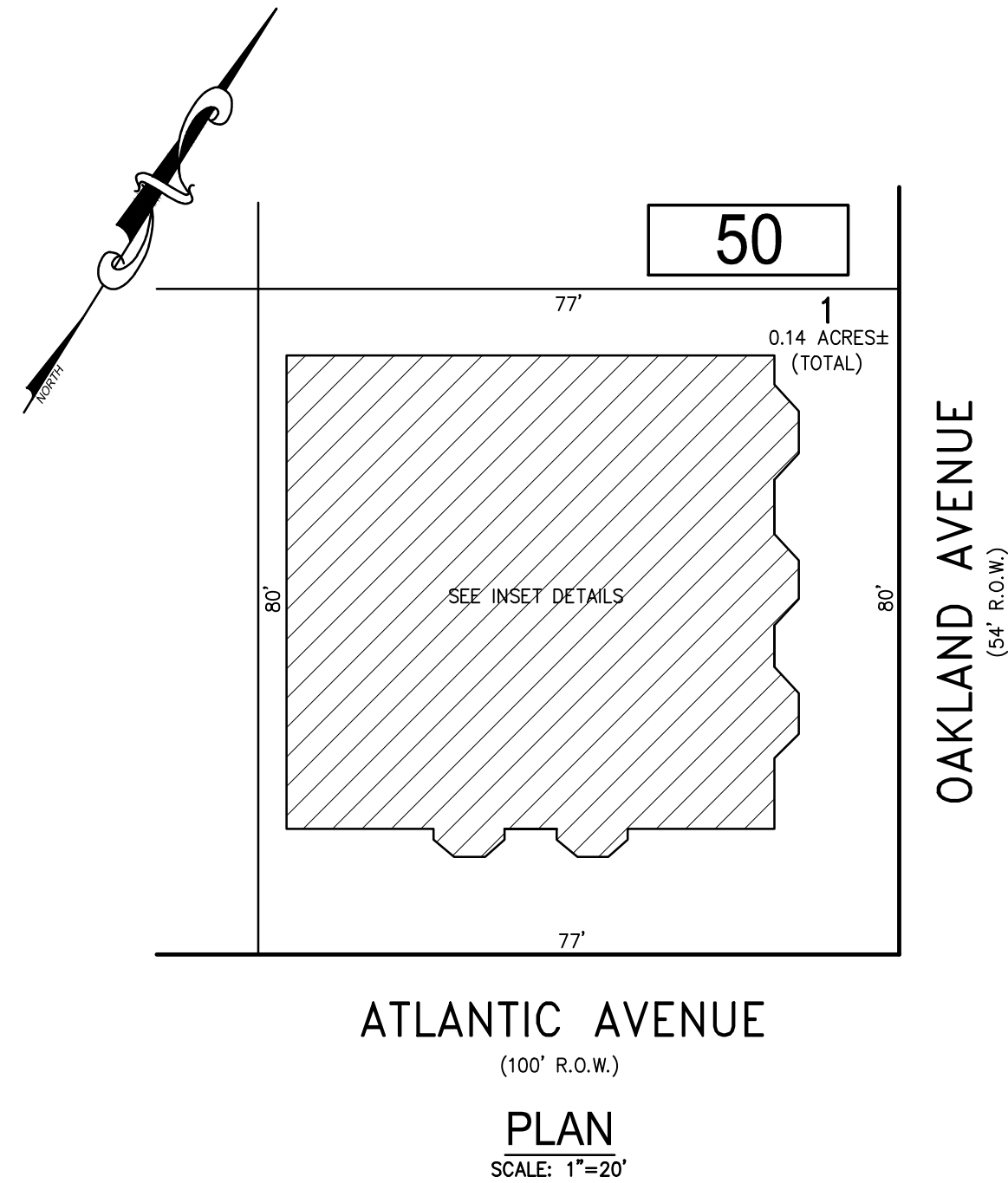
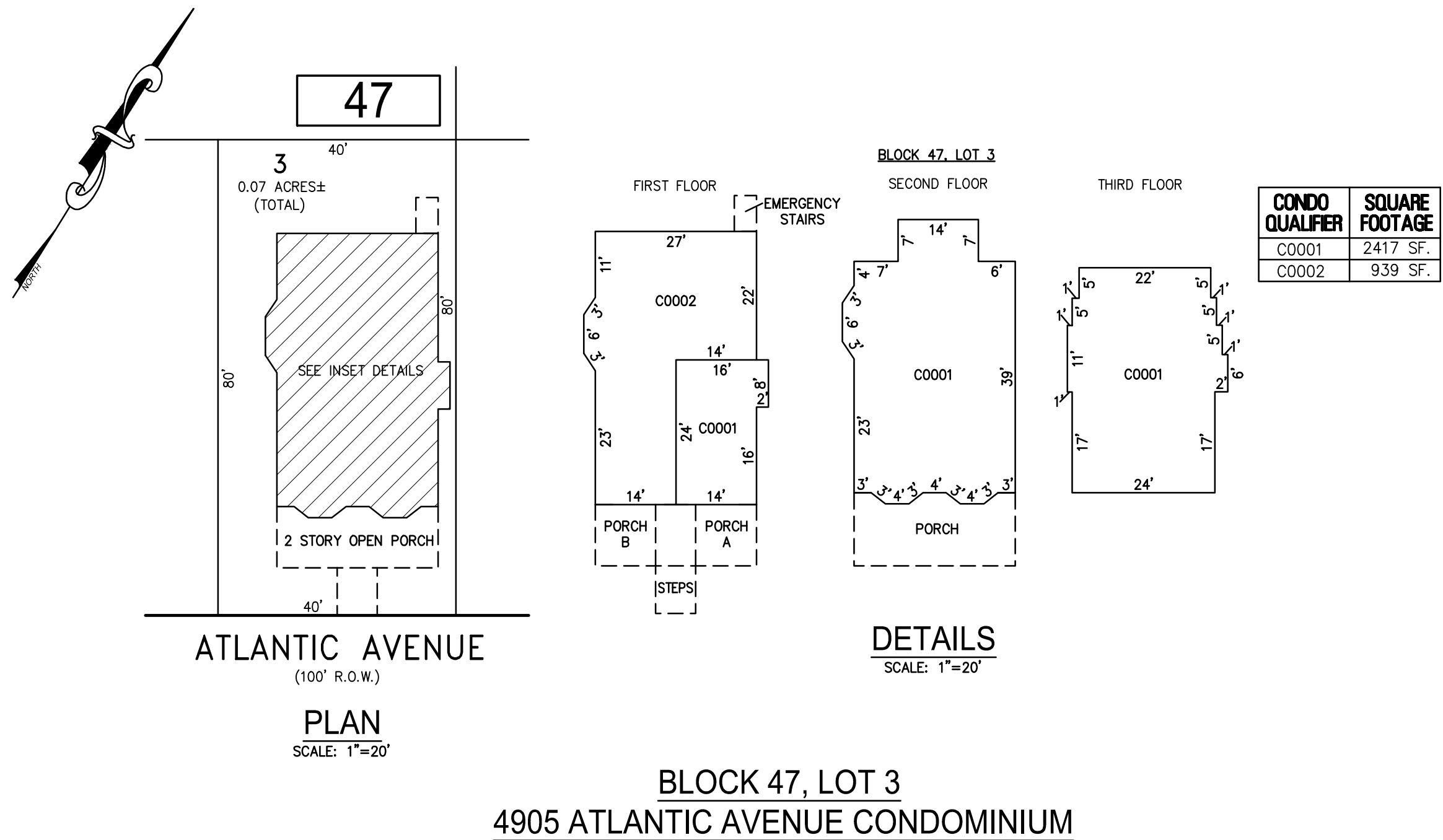
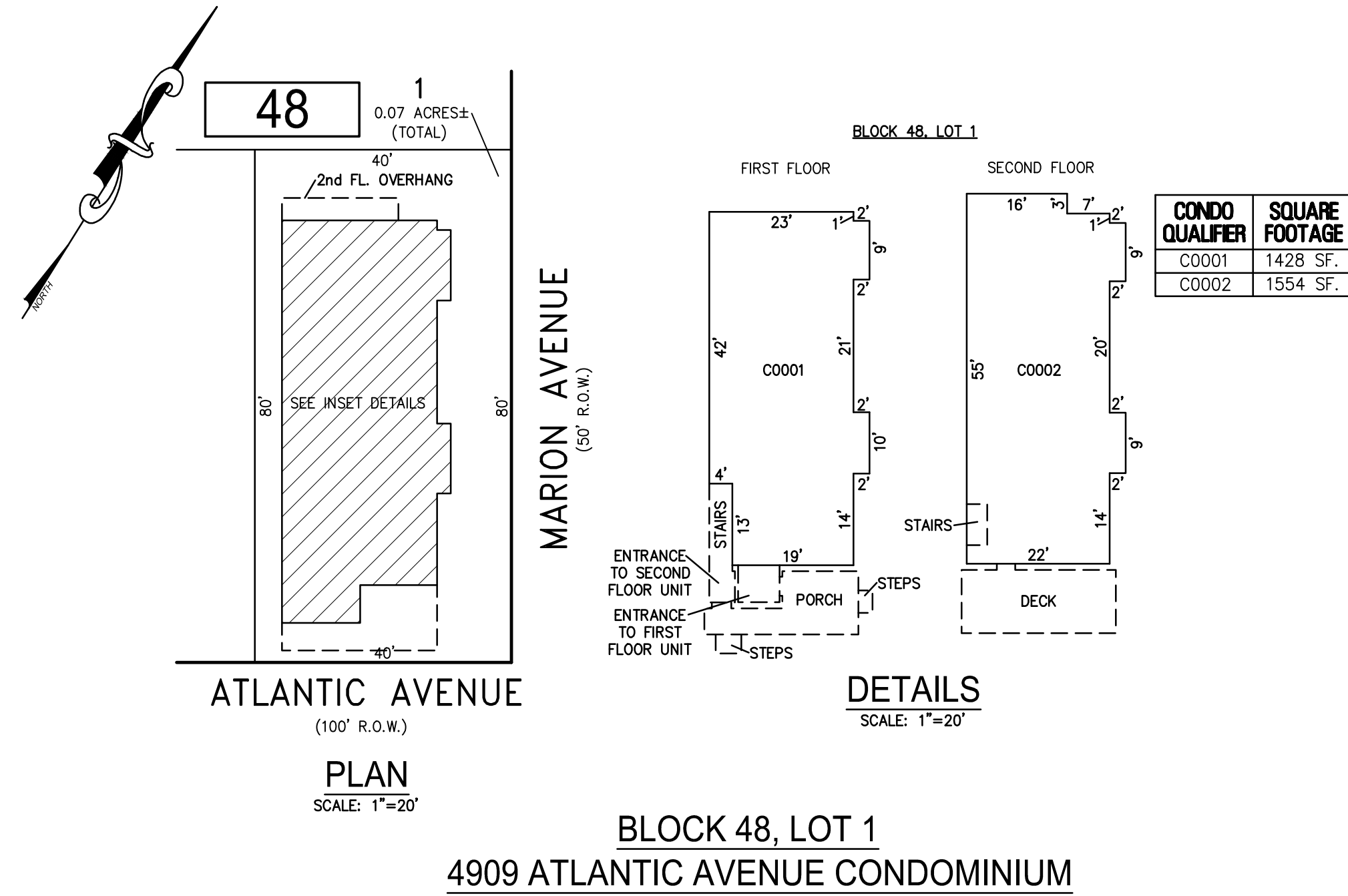
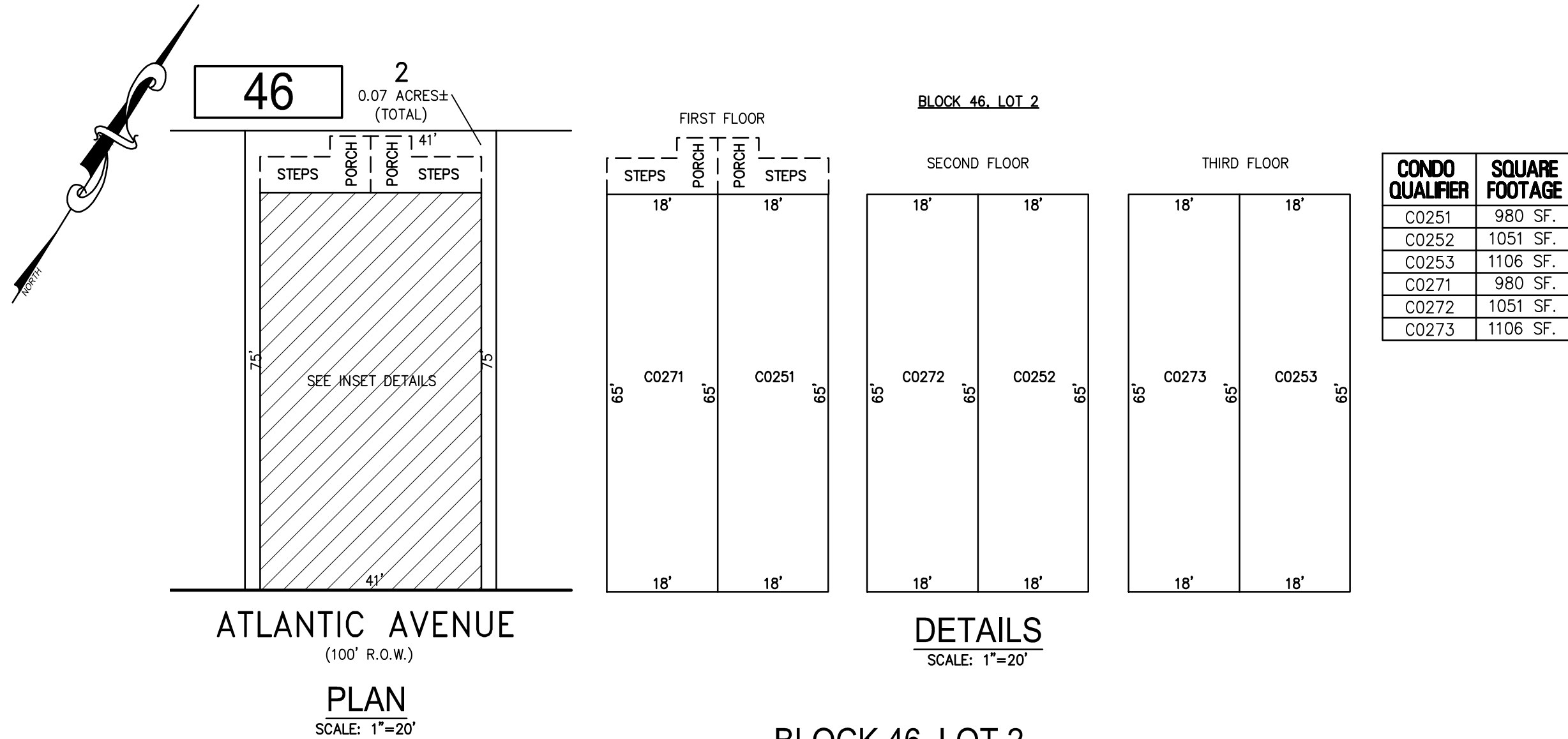


REVISIONS		
DATE	NAME	NO.

NOTE:
THIS SHEET HAS BEEN DRAWN USING COMPUTER AIDED DRAFTING/DESIGN
(CAD/D) AND COORDINATE GEOMETRY (COGO).



BLOCK 46, LOT 2
BLOCK 47, LOT 3
BLOCK 48, LOT 1
BLOCK 50, LOT 1
BLOCK 50, LOT 11
SEE SHEET 9

"THIS TAX MAP SHEET HAS BEEN DIGITALLY REVISED USING COMPUTER-AIDED DRAFTING/DESIGN (CADD) & COORDINATE GEOMETRY (COGO). IT IS BASED ON THE ORIGINAL DIGITALLY DRAWN TAX MAP PLATE BEARING THE OFFICIAL NEW JERSEY DIVISION TAXATION APPROVAL STAMP WITH APPROVAL DATE JULY, 20, 2016. SERIAL NUMBER 1070 AND SIGNATURE OF JUDY P. MILLER, CTA, CHIEF PROPERTY ADMINISTRATION AND SHELLY REILLY, CTA, PRINCIPAL FIELD REPRESENTATIVE. THE ORIGINAL DIGITALLY DRAWN TAX MAP PLATE WITH THE OFFICIAL APPROVAL STAMP IS ON FILE WITH REMINGTON & VERNICK ENGINEERS."

TAX MAP

CITY OF VENTNOR

ATLANTIC COUNTY NEW JERSEY

SCALE: NOTED DATE: 2-19-2015

CHARLES E. ADAMSON NJ PROFESSIONAL LAND SURVEYOR LIC. NO. 42627

24 GA 28048700

REMINGTON, VERNICK & WALBERG ENGINEERS

845 N. MAIN STREET, PLEASANTVILLE, NJ 08232

(609) 645-7700, FAX (609) 645-7076

WEB SITE ADDRESS: WWW.RVE.COM

TO SHOW CONDITIONS AS OF 2-19-2019