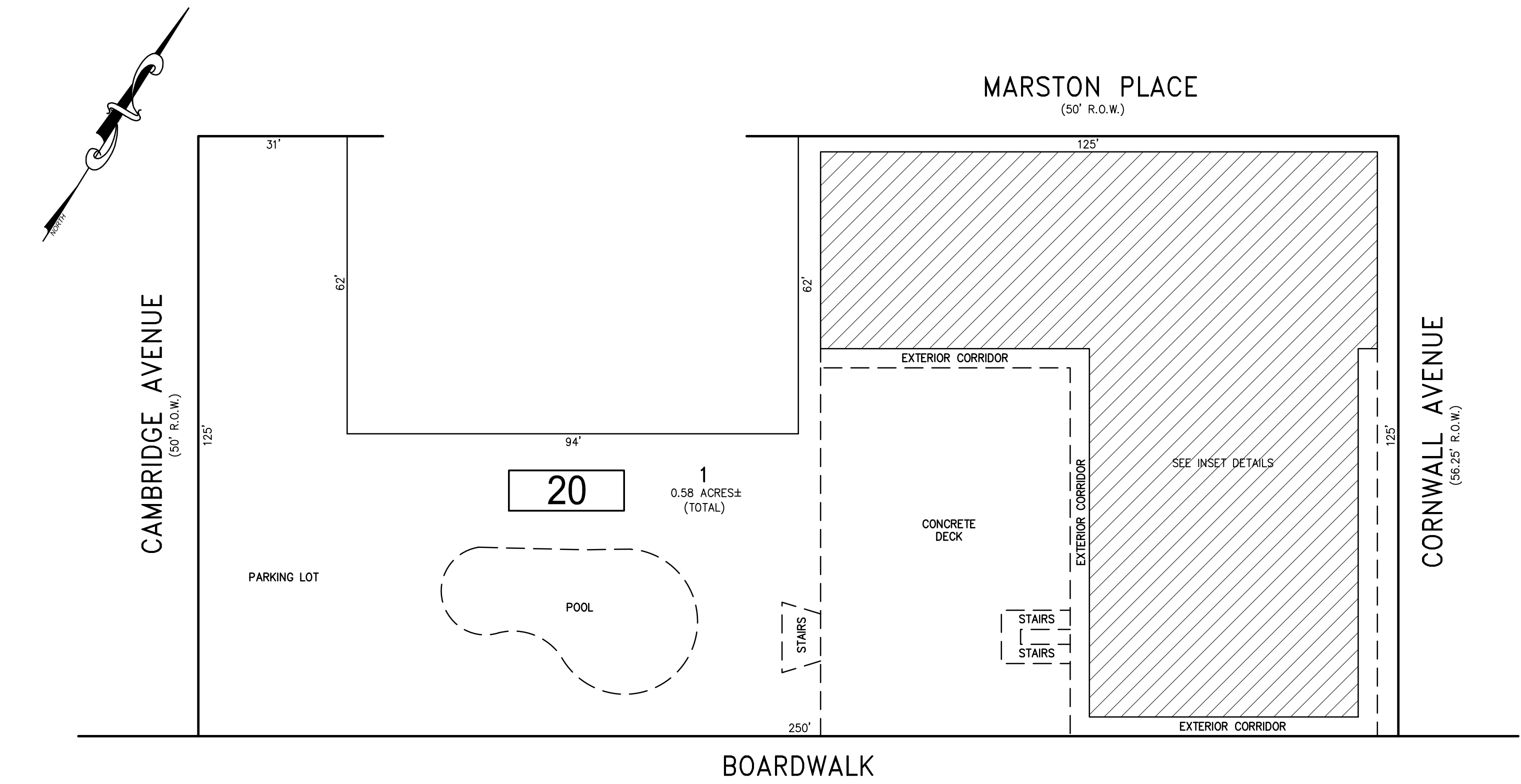


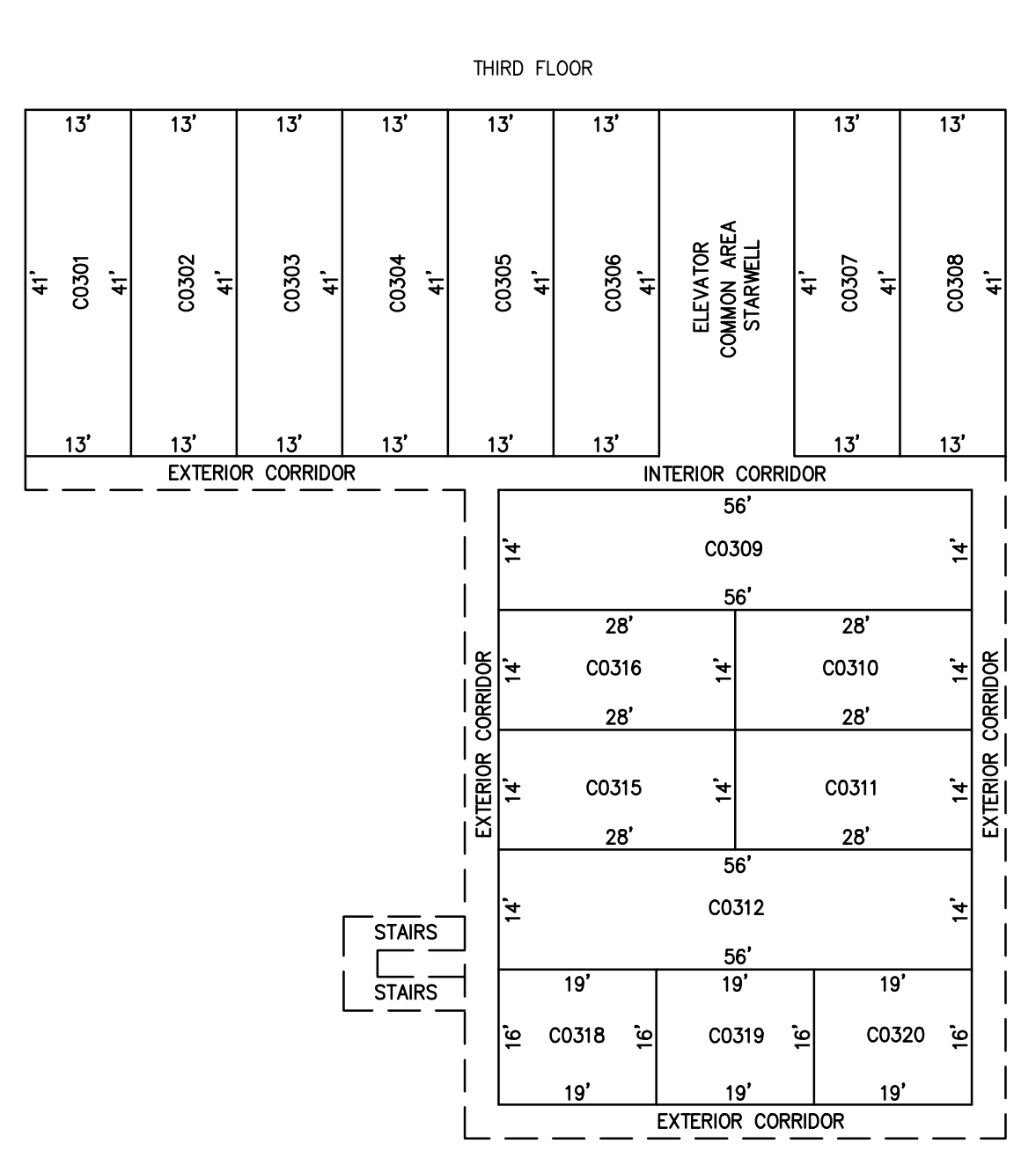
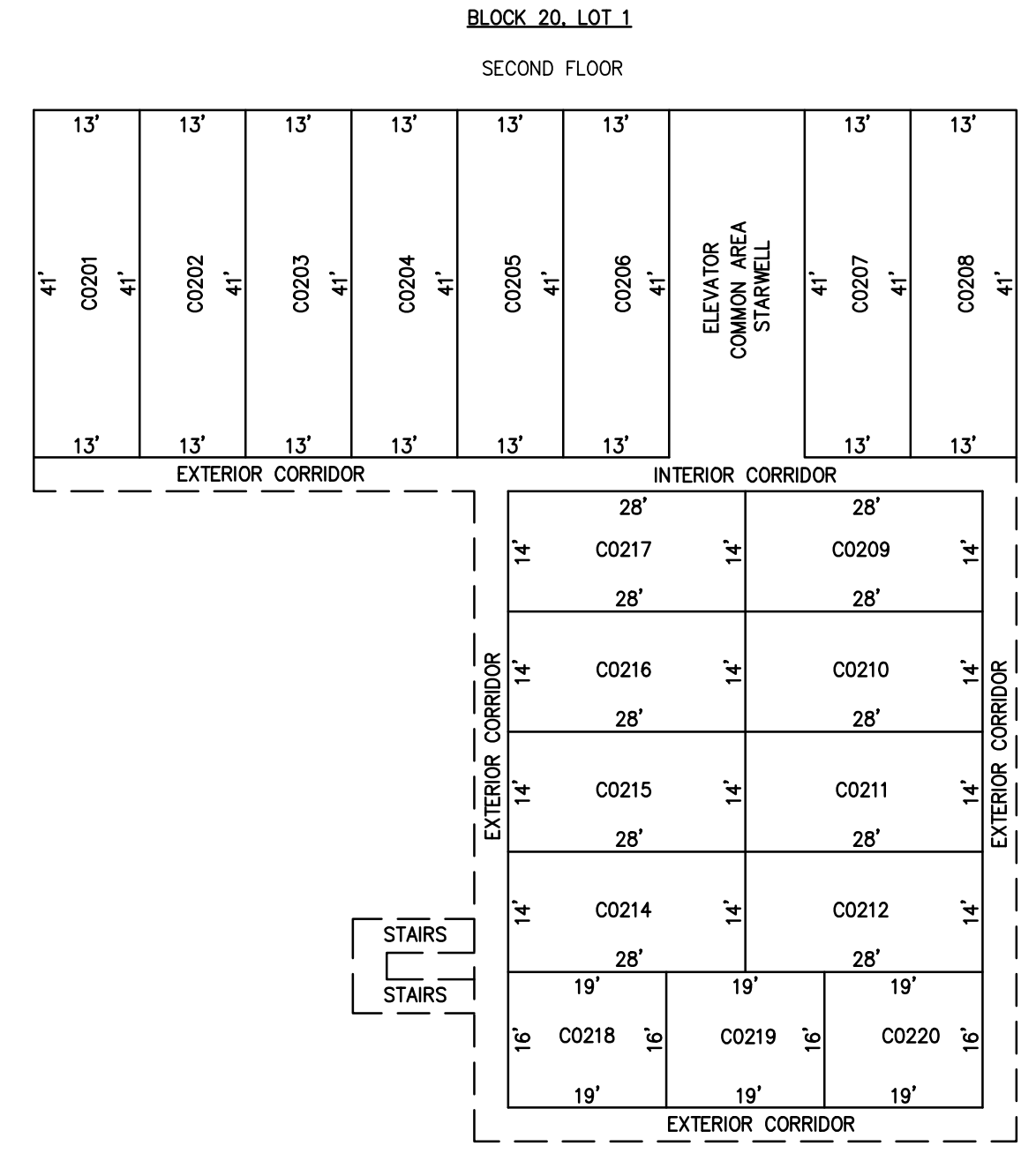
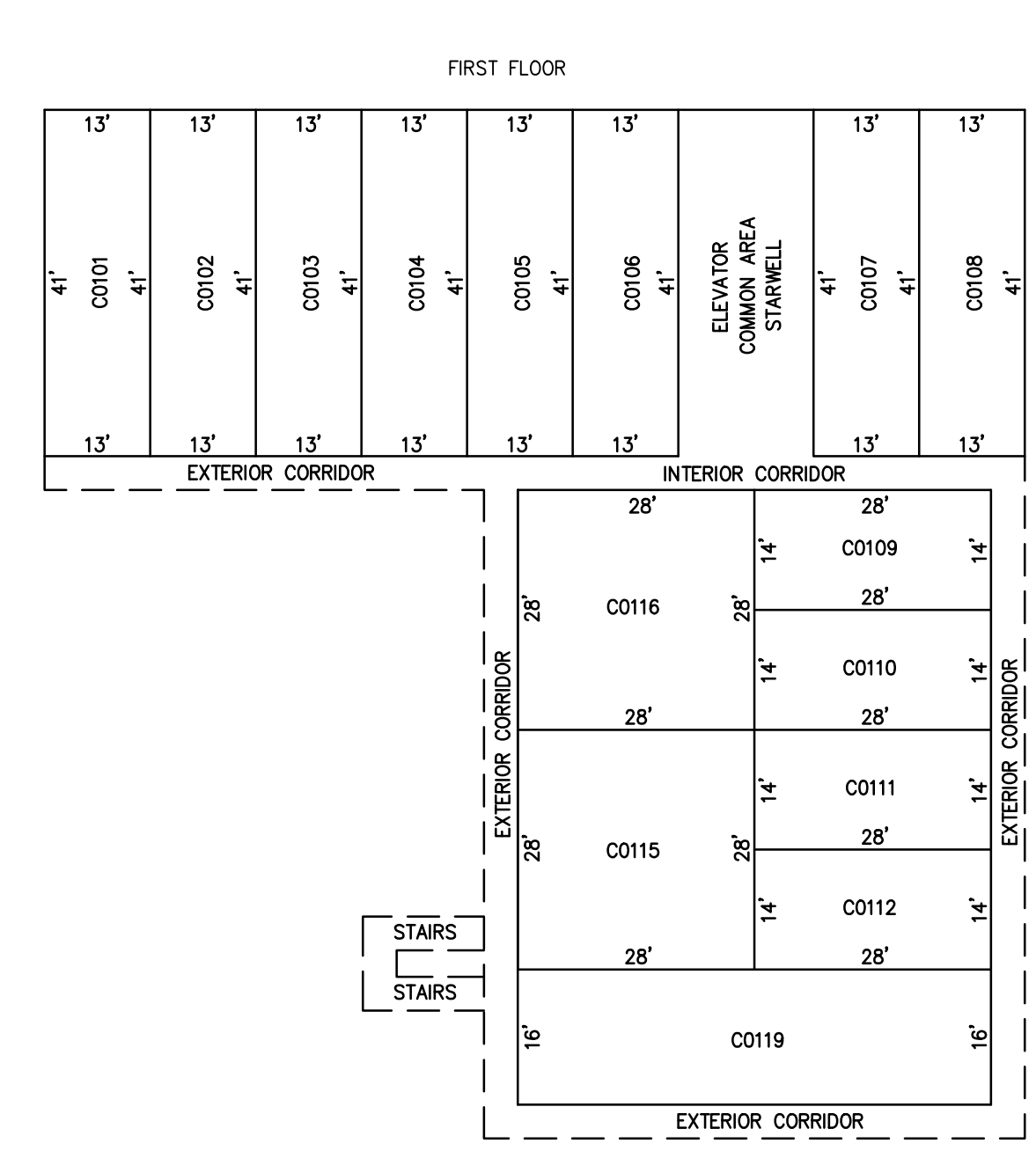
REVISIONS		
DATE	NAME	NO.

NOTE:
 THIS SHEET HAS BEEN DRAWN USING COMPUTER AIDED DRAFTING/DESIGN (CADD) AND COORDINATE GEOMETRY (COGO).



PLAN
 SCALE: 1"=20'

CONDO QUALIFIER	SQUARE FOOTAGE
C0101	460 SF.
C0102	460 SF.
C0103	460 SF.
C0104	460 SF.
C0105	460 SF.
C0106	460 SF.
C0107	460 SF.
C0108	460 SF.
C0109	280 SF.
C0110	280 SF.
C0111	280 SF.
C0112	280 SF.
C0115	560 SF.
C0116	560 SF.
C0119	660 SF.
C0201	460 SF.
C0202	460 SF.
C0203	460 SF.
C0204	460 SF.
C0205	460 SF.
C0206	460 SF.
C0207	460 SF.
C0208	460 SF.
C0209	280 SF.
C0210	280 SF.
C0211	280 SF.
C0212	280 SF.
C0214	280 SF.
C0215	280 SF.
C0216	280 SF.
C0217	280 SF.
C0218	220 SF.
C0219	220 SF.
C0220	220 SF.
C0301	460 SF.
C0302	460 SF.
C0303	460 SF.
C0304	460 SF.
C0305	460 SF.
C0306	460 SF.
C0307	460 SF.
C0308	460 SF.
C0309	560 SF.
C0310	280 SF.
C0311	280 SF.
C0312	560 SF.
C0315	280 SF.
C0316	280 SF.
C0318	220 SF.
C0319	220 SF.
C0320	220 SF.



DETAILS
 SCALE: 1"=20'
BLOCK 20, LOT 1
SANDS OF VENTNOR CONDOMINIUM
6100 BOARDWALK

BLOCK 20, LOT 1
 SEE SHEET 4

"THIS TAX MAP SHEET HAS BEEN DIGITALLY REVISED USING COMPUTER-AIDED DRAFTING/DESIGN (CADD) & COORDINATE GEOMETRY (COGO). IT IS BASED ON THE ORIGINAL DIGITALLY DRAWN TAX MAP PLATE BEARING THE OFFICIAL NEW JERSEY DIVISION TAXATION APPROVAL STAMP WITH APPROVAL DATE JULY, 20, 2016. SERIAL NUMBER 1070 AND SIGNATURE OF JUDY P. MILLER, C.T.A. CHIEF PROPERTY ADMINISTRATION AND SHELLY REILLY, C.T.A. PRINCIPAL FIELD REPRESENTATIVE. THE ORIGINAL DIGITALLY DRAWN TAX MAP PLATE WITH THE OFFICIAL APPROVAL STAMP IS ON FILE WITH REMINGTON & VERNICK ENGINEERS."

TAX MAP
CITY OF VENTNOR
 ATLANTIC COUNTY NEW JERSEY
 SCALE: NOTED DATE: 2-19-2015
CHARLES E. ADAMSON NJ PROFESSIONAL LAND SURVEYOR LIC. NO. 42627
REMINGTON, VERNICK & WALBERG ENGINEERS
 845 N. MAIN STREET, PLEASANTVILLE, N.J. 08232
 (609) 645-7000, FAX (609) 645-7076
 WEB SITE ADDRESS: WWW.RVW.COM
 TO SHOW CONDITIONS AS OF 2-19-2019