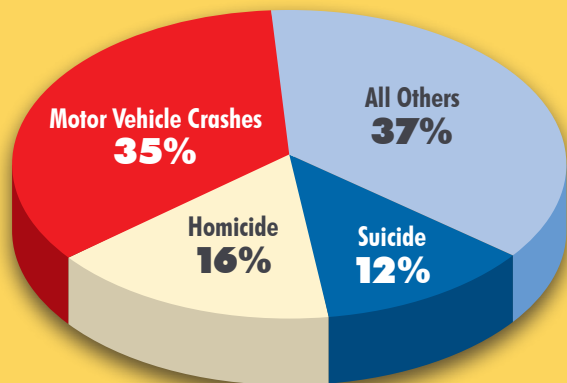


## Traffic Crashes are the Leading Cause of Fatalities for Teens\*



Source: National Highway Traffic Safety Administration (NHTSA)

\* Teen is defined as an individual from 15 to 20 years of age

Mile for mile, teenagers are involved in three times as many fatal crashes as all other drivers. Teens are at the highest risk of being involved in a car crash during their first 12 to 24 months of driving. The more guided experience a young driver has, the safer that driver is on the road.

(NHTSA)

Parents play a crucial role in teen driver safety. Teens who report having parents that set rules and monitor their activities in a helpful, supportive way are half as likely to be in a crash and 71 percent less likely to drive intoxicated as teens who describe less involved parents.

(The Children's Hospital of Philadelphia & State Farm Insurance Companies, *Driving Through the Eyes of Teens, A Closer Look, 2009*)

New Jersey  
**teendriving.com**  
The parent resource for teen driving safety

[www.njteendriving.com](http://www.njteendriving.com)

More than 40 percent of teen driver fatal crashes occur between the hours of 9 p.m. and 6 a.m.



**A teen driver is twice as likely to be killed in a crash while carrying just one passenger**

GDL restrictions reduce young driver exposure to crash risk and save lives. Scientific evidence tells us that there are two conditions that put a teen at the highest risk for being involved in a fatal crash: driving with other teens and driving at night.

(New Jersey Teen Driver Study Commission Report, 2007)

**For more information on teen driver safety:**



Division of Highway Traffic Safety  
NJ Office of the Attorney General  
800-422-3750  
[www.njsaferoads.com](http://www.njsaferoads.com)

**New Jersey  
Motor Vehicle Commission**  
609-292-6500 or  
(toll-free in NJ) 888-486-3339  
[www.njmvc.gov](http://www.njmvc.gov)

## Understanding New Jersey's Graduated Driver License Program



**SAFE PASSAGE**

*moving toward zero fatalities*

[WWW.NJSAFEROADS.COM](http://WWW.NJSAFEROADS.COM)

## THE GRADUATED DRIVER LICENSE PROGRAM FOR FIRST TIME DRIVERS

New Jersey residents who have never had a driver license must follow New Jersey's Graduated Driver License (GDL) program to get their first unrestricted basic driver license.

The GDL is designed to give new drivers increased, step-by-step instruction and driving experience on the road to obtaining a basic driver license. The GDL has been proven to save lives among new drivers and their passengers.



### GDL REQUIREMENTS AND RESTRICTIONS

The **Early-Bird Road** and the **Young Adult Road** have different steps and requirements, but they both lead to an unrestricted driver license.

#### RESTRICTIONS

##### Special Learners/Examination Permit and Probationary Drivers

###### (UNDER 21 YEARS OF AGE)

- No driving between 11:01 p.m. and 5:00 a.m.
- The driver may only transport **one passenger**, unless the driver is accompanied by a parent or guardian or the passengers are the driver's dependents (children).
- Drivers cannot use cell phones (hand-held or hands-free), hand-held video games or any other hand-held wireless electronic devices (i.e., ipods, GPS).
- All special learners and examination permit holders must be accompanied by an adult supervising driver in the front seat who must possess a valid New Jersey driver license, be at least 21 years of age and licensed to drive for at least three years.

###### (AT LEAST 21 YEARS OF AGE)

- There are no passenger or curfew restrictions.

**ALL DRIVERS AND PASSENGERS MUST WEAR SEAT BELTS. IT'S THE LAW!**

## THE EARLY-BIRD ROAD

### 1. TO OBTAIN A SPECIAL LEARNERS PERMIT YOU MUST:

- Be at least 16 years old
- Obtain the signed consent of a parent or guardian
- Enroll in an approved behind-the-wheel driver training course
- Pass MVC's knowledge and vision tests
- Pay the required fee

*Upon completing the driver-training course, MVC will VALIDATE the Special Learner's Permit. With a validated permit you can:*

### 2. PRACTICE SUPERVISED DRIVING. YOU MUST:

- Display the GDL decals on the vehicle you operate
- Be accompanied, in the passenger seat, by a licensed NJ driver who is at least 21 years of age and has been licensed for at least three years
- Observe the Special Learners Permit driving restrictions
- Practice for at least six months

*You are then eligible to apply for a Probationary Driver License.*

### 3. TO OBTAIN A PROBATIONARY DRIVER LICENSE YOU MUST:

- Be at least 17 years old
- Complete the supervised driving period without any suspensions or postponements
- Pass MVC's road test

*With a Probationary License you can:*

### 4. PRACTICE UNSUPERVISED DRIVING. YOU MUST:

- Display the GDL decals on the vehicle you operate
- Observe the Probationary Driver License restrictions
- Practice for at least 12 months

*After completing 12 months on your probationary license, you are then eligible to apply for a basic driver license. Please note that your Probationary License does not automatically become a basic license.*

### 5. TO OBTAIN A BASIC DRIVER LICENSE YOU MUST:

- Be at least 18 years old
- Complete the unsupervised driving period above without any suspensions or postponements
- Pay the required fee

## THE YOUNG ADULT ROAD

### 1. TO OBTAIN AN EXAMINATION PERMIT YOU MUST:

- Be at least 17 years old
- Obtain the signed consent of a parent or guardian
- Pass MVC's knowledge and vision tests
- Pay the required fee

*When you complete the above requirements, MVC will give you a validated Examination Permit. With a validated permit you can:*

### 2. PRACTICE SUPERVISED DRIVING. YOU MUST:

- Display the GDL decals on the vehicle you operate
- Be accompanied, in the passenger seat, by a licensed NJ driver who is at least 21 years of age and has been licensed for at least three years
- Observe the Special Learners Permit driving restrictions
- Practice for at least six months

*Then you can apply for a Probationary Driver License.*

### 3. TO OBTAIN A PROBATIONARY DRIVER LICENSE YOU MUST:

- Complete the supervised driving period above without any suspensions or postponements
- Pass MVC's road test

*With a Probationary License you can:*

### 4. PRACTICE UNSUPERVISED DRIVING. YOU MUST:

- Display the GDL decals on the vehicle you operate
- Observe the Probationary Driver License restrictions
- Practice for at least one year

*Then you can:*

### 5. GET A BASIC DRIVER LICENSE. YOU MUST:

- Complete the unsupervised driving period above without any suspensions or postponements
- Pay the required fee

