

# ATLANTIC COUNTY'S HISTORIC AERIAL LIBRARY

-THE ATLANTIC COUNTY OFFICE OF GIS (ACOGIS) HAS A LIBRARY OF HISTORIC ORTHOPHOTOGRAPHY AVAILABLE TO THE GENERAL PUBLIC FOR REVIEW AND PRINTING.

-THE YEARS AVAILABLE FOR VIEWING ARE: 1930'S, 1963, 1968, 1977, 1983, 1995, 2000, 2002, 2004/2005 AND 2007.

-THE COLLECTION WAS OBTAINED AND DEVELOPED THROUGH VARIOUS SOURCES, AS WELL AS, SCANNED BY ACOGIS FROM FILM OR PHOTOGRAPH AND GEOREFERENCED IN HOUSE.

-THE DIGITAL COLLECTIONS COVER THE ENTIRE COUNTY OF ATLANTIC AND CAN BE INCORPORATED WITH OTHER GIS LAYERS FOR FURTHER ANALYSIS.

-CURRENTLY THE HISTORIC AERIAL LIBRARY MAY BE VIEWED VIA APPOINTMENT ONLY, BY SCHEDULING @ [HTTP://WWW.ACLINK.ORG/PLANNING/MAINPAGES/ARCIMS.ASP](http://www.aclink.org/planning/mainpages/arcims.asp)

OUR GOAL IS TO MAKE THE HISTORIC AERIAL LIBRARY AVAILABLE TO THE PUBLIC VIA THE ATLANTIC COUNTY SITE INVESTIGATOR AND INTERNET MAPPING SERVICE WEBSITE.

#### CONTRIBUTING SOURCES:



#### COMING SOON TO THE:



#### PRESENTED BY:



SOURCE: N.J.D.E.P.  
DEVELOPED BY N.J.D.E.P.



SOURCE: RICHARD STOCKTON COLLEGE OF NEW JERSEY PHOTOS  
SCANNED & GEOREFERENCED BY ATLANTIC COUNTY OFFICE OF GIS



SOURCE: ATLANTIC COUNTY FILM  
SCANNED & GEOREFERENCED BY ATLANTIC COUNTY OFFICE OF GIS



SOURCE: ATLANTIC COUNTY FILM  
SCANNED & GEOREFERENCED BY ATLANTIC COUNTY OFFICE OF GIS



SOURCE: ATLANTIC COUNTY FILM  
SCANNED & GEOREFERENCED BY ATLANTIC COUNTY OFFICE OF GIS



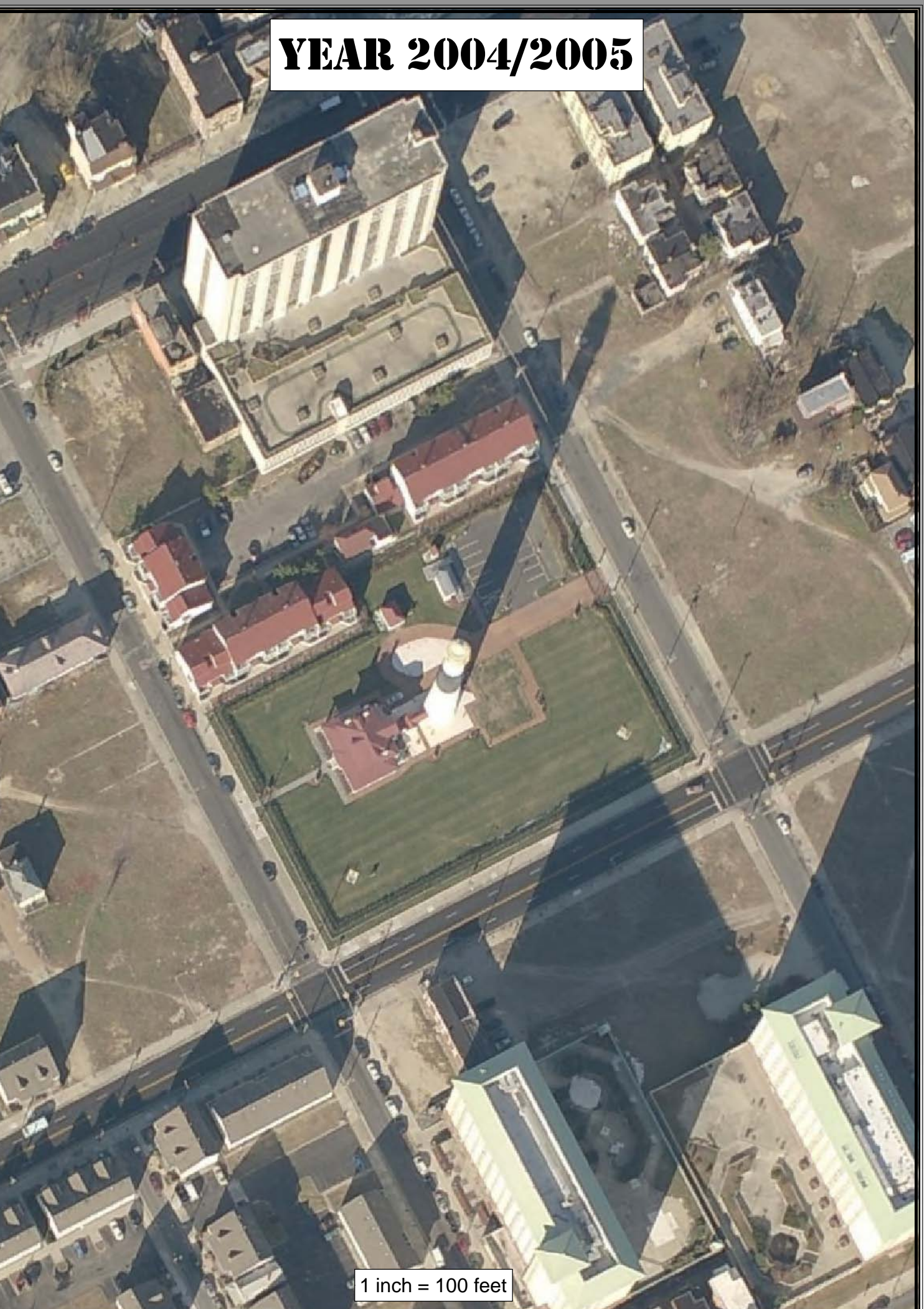
SOURCE: U.S. GEOLOGIC SURVEY  
DEVELOPED BY U.S. GEOLOGIC SURVEY



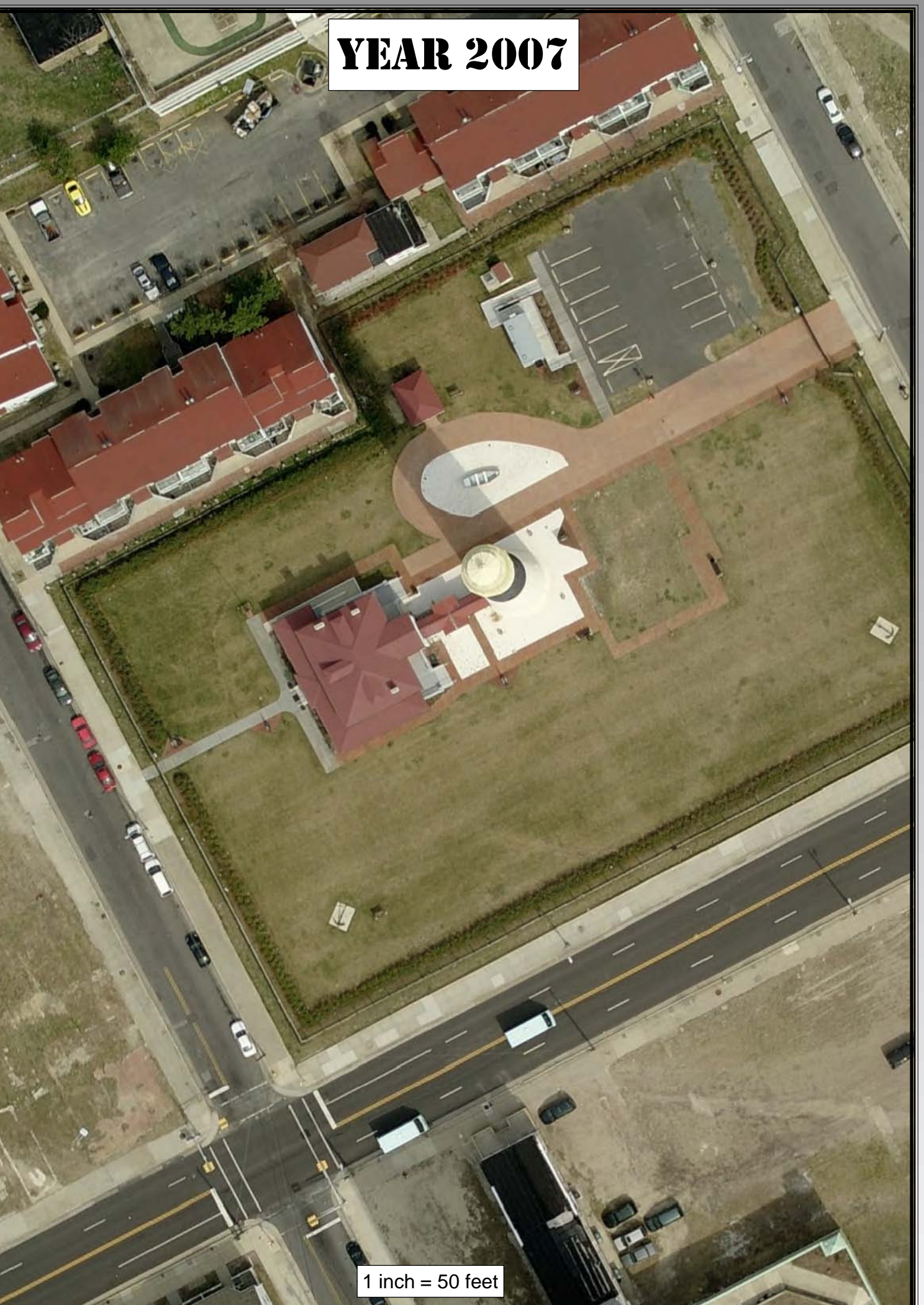
SOURCE: S.J.T.P.O.  
DEVELOPED BY S.J.T.P.O.



SOURCE: N.J. OFFICE OF INFORMATION TECHNOLOGY  
DEVELOPED BY N.J. OFFICE OF INFORMATION TECHNOLOGY



SOURCE: PICTOMETRY  
EXTRACTED BY ATLANTIC COUNTY OFFICE OF GIS



SOURCE: PICTOMETRY  
EXTRACTED BY ATLANTIC COUNTY OFFICE OF GIS