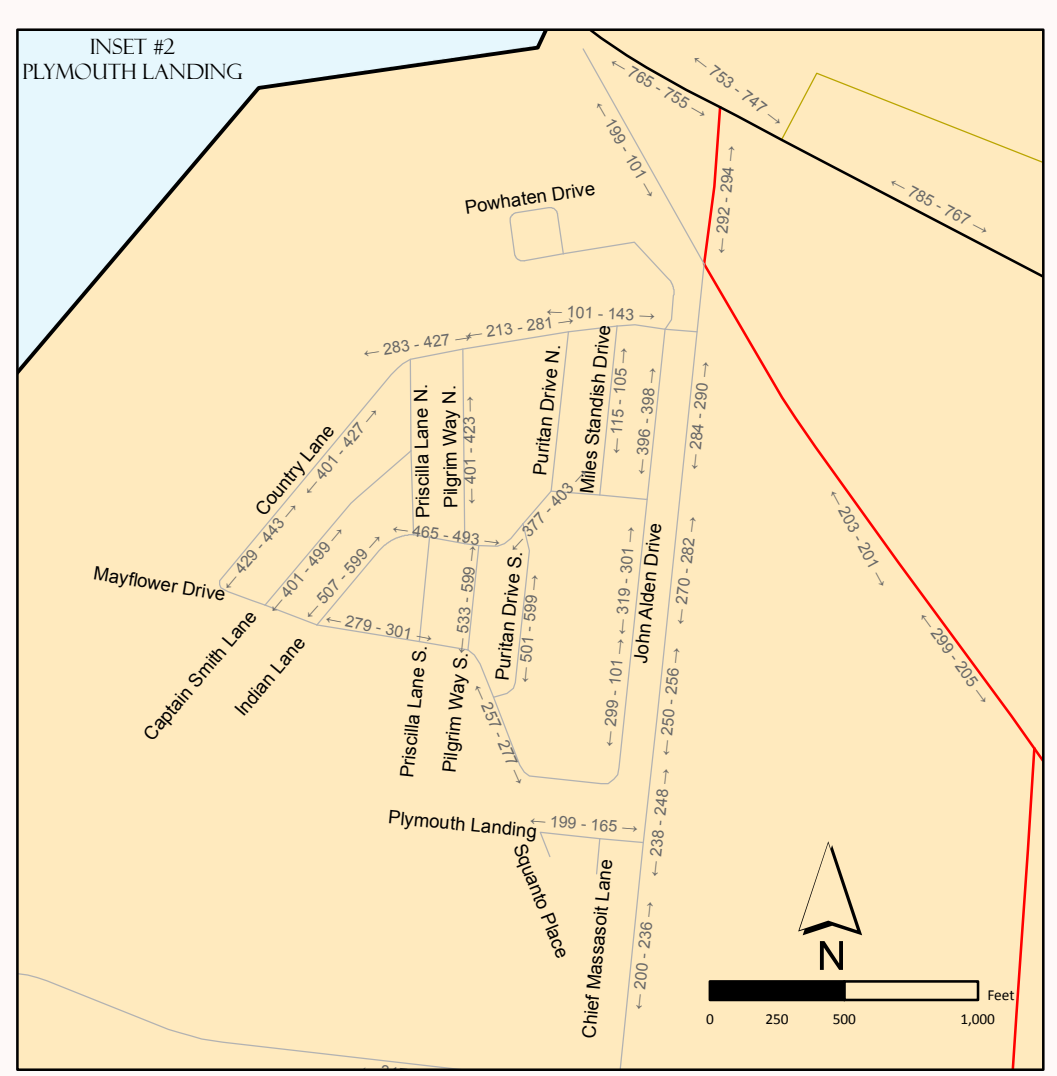
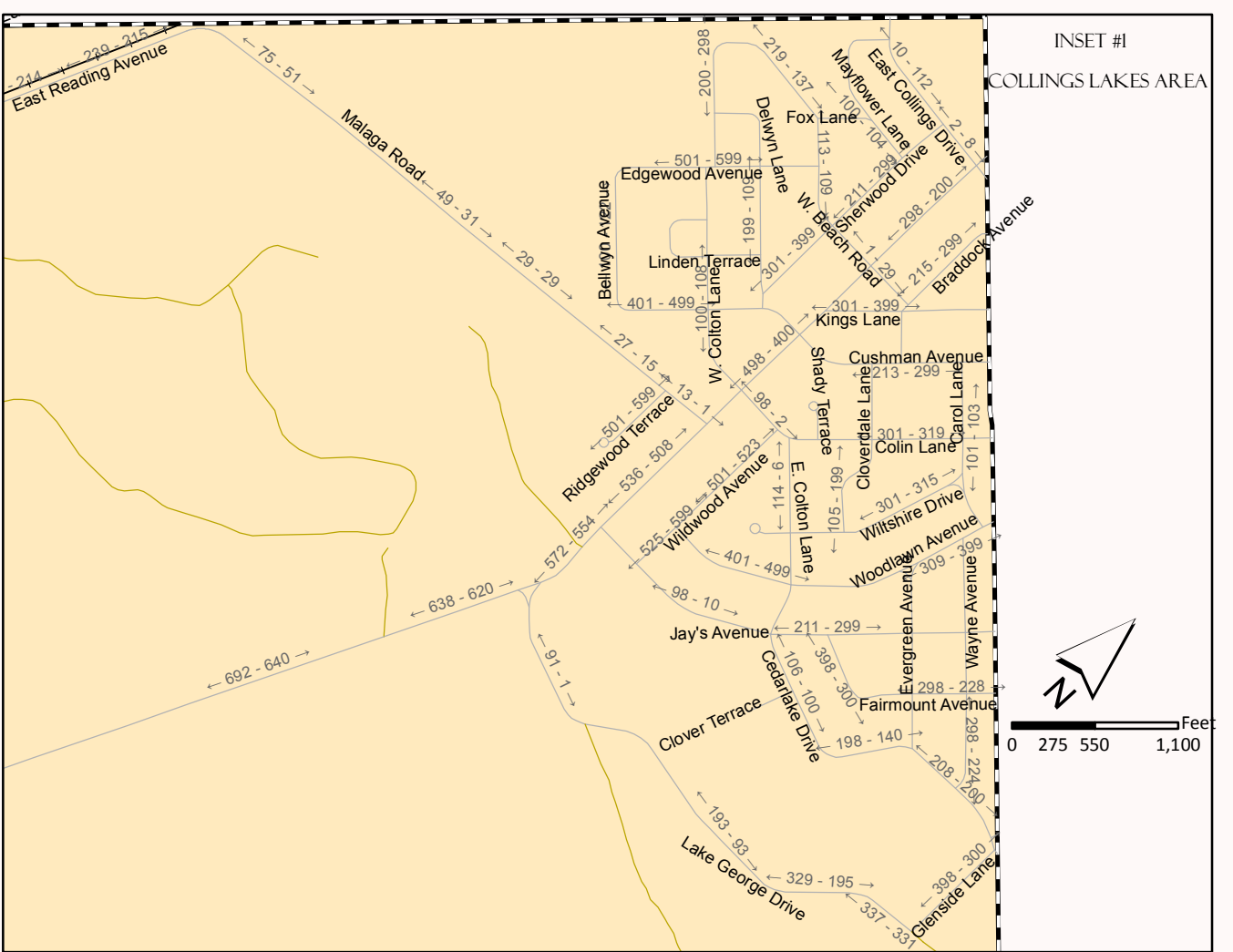
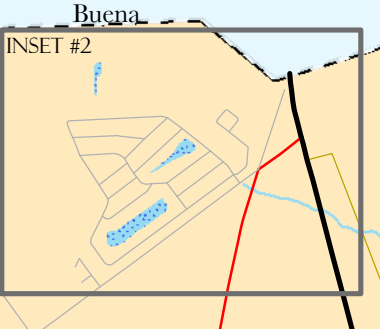
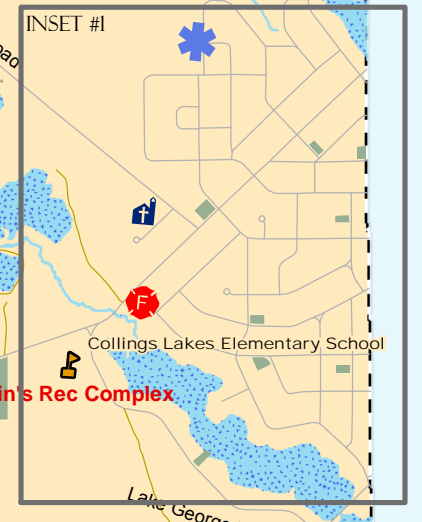
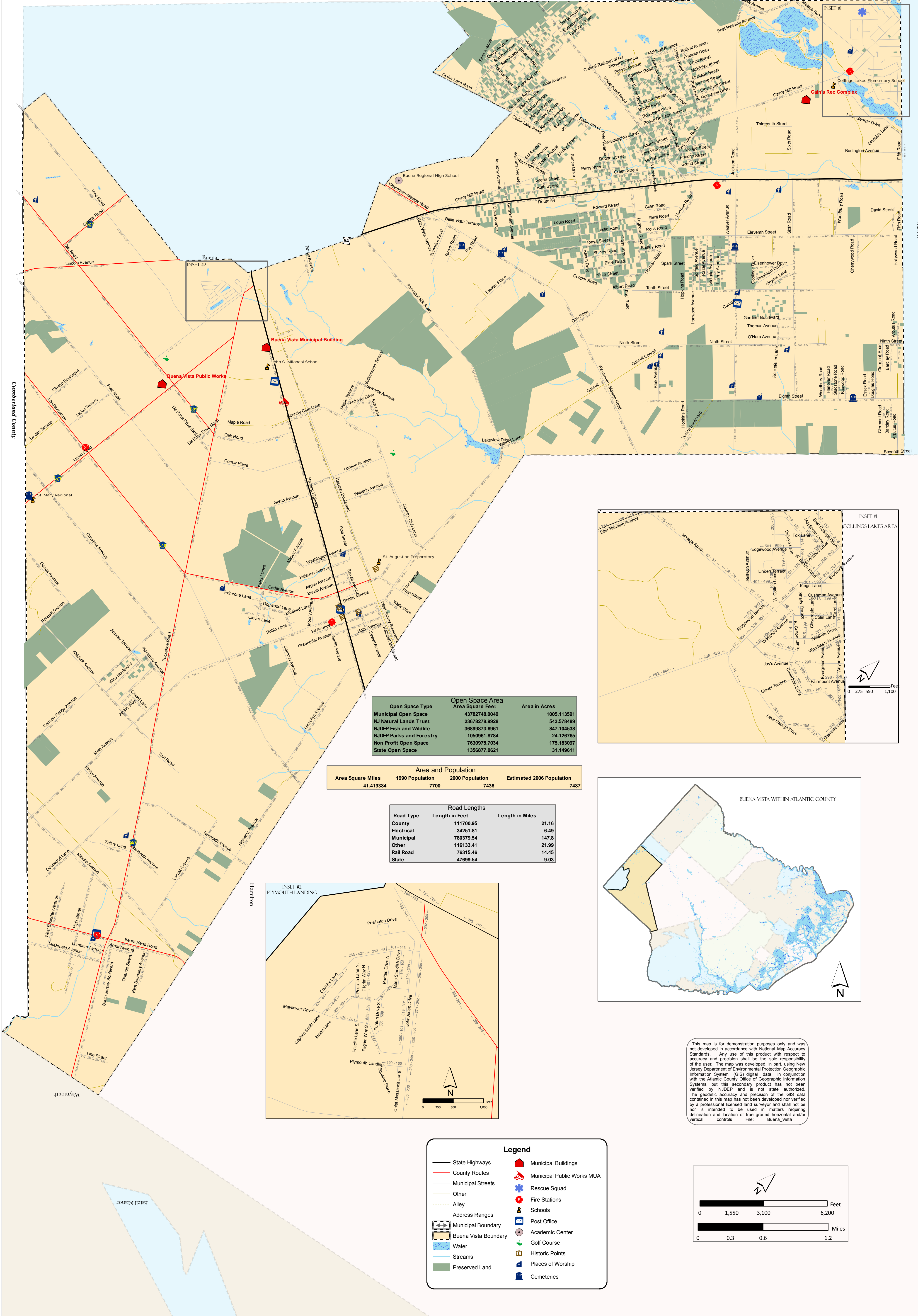




BUENA VISTA ATLANTIC COUNTY, NEW JERSEY

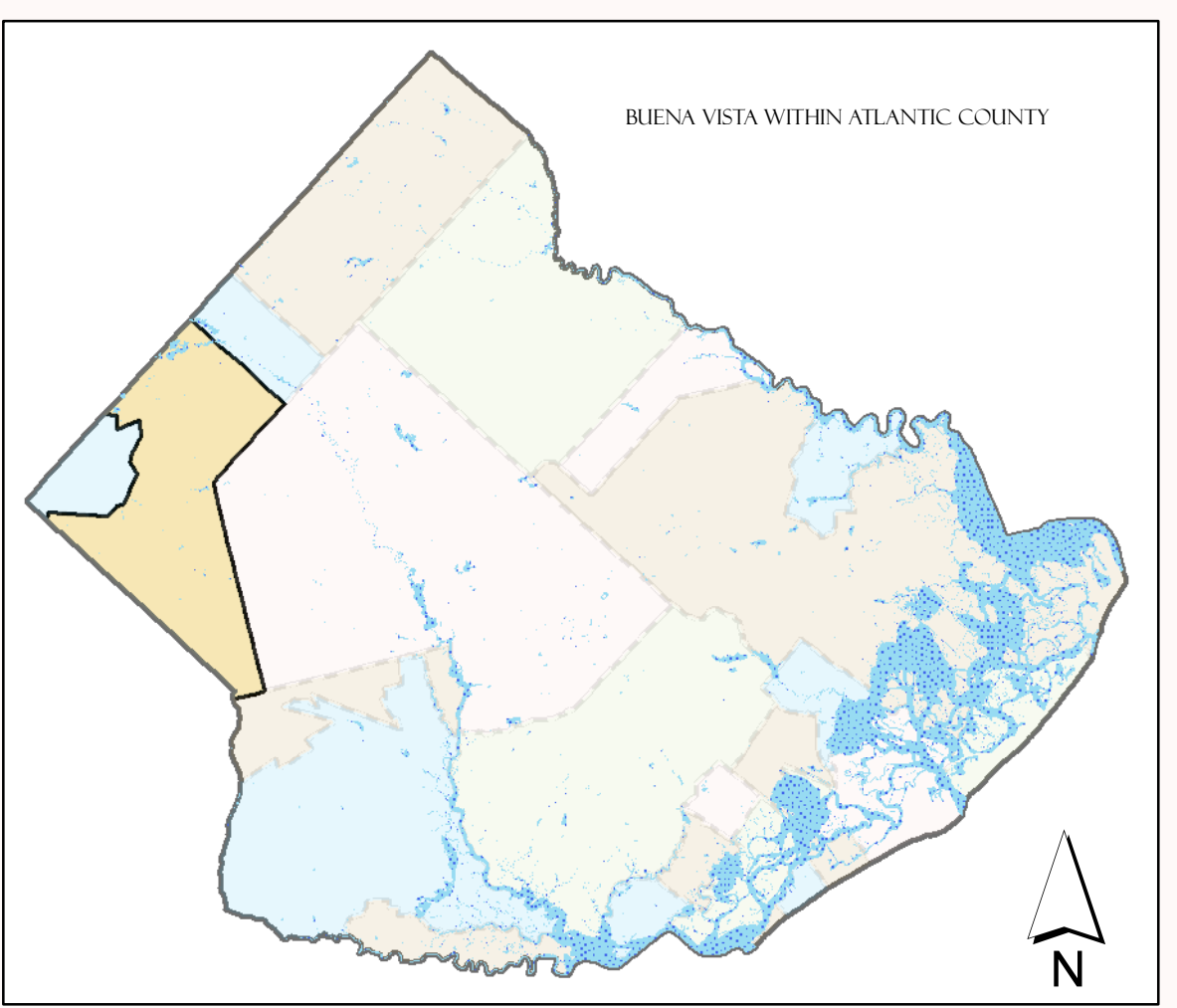
Gloucester County



Open Space Type	Open Space Area Area Square Feet	Area in Acres
Municipal Open Space	4378278.0049	1005.113591
NJ Natural Lands Trust	23678278.9928	543.578489
NJDEP Fish and Wildlife	36899873.6961	847.104538
NJDEP Parks and Forestry	1050961.8784	24.126765
Non Profit Open Space	7630975.7034	175.183097
State Open Space	1356877.0621	31.149611

Area and Population			
Area Square Miles	1990 Population	2000 Population	Estimated 2006 Population
41.419384	7700	7436	7487

Road Lengths		
Road Type	Length in Feet	Length in Miles
County	11700.95	21.16
Electrical	34251.81	6.49
Municipal	780379.54	147.8
Other	116133.41	21.99
Rail Road	76315.46	14.45
State	47699.54	9.03



This map is for demonstration purposes only and was not developed in accordance with National Map Accuracy Standards. Any use of this product with respect to accuracy and precision shall be the sole responsibility of the user. The map was developed, in part, using New Jersey Department of Environmental Protection Geographic Information System (GIS) digital data, in conjunction with the Atlantic County Office of Geographic Information Systems, but this secondary product has not been verified by NJDEP and is not state authorized. The geodetic accuracy and precision of the GIS data contained in this map has not been developed nor verified by a professional licensed land surveyor and shall not be used in matters requiring delineation and location of true ground horizontal and vertical controls. File: Buena_Vista

Legend

- State Highways
- County Routes
- Municipal Streets
- Other
- Alley
- Address Ranges
- Municipal Boundary
- Buena Vista Boundary
- Water
- Streams
- Preserved Land
- Municipal Buildings
- Municipal Public Works MUA
- Rescue Squad
- Fire Stations
- Schools
- Post Office
- Academic Center
- Golf Course
- Historic Points
- Places of Worship
- Cemeteries

