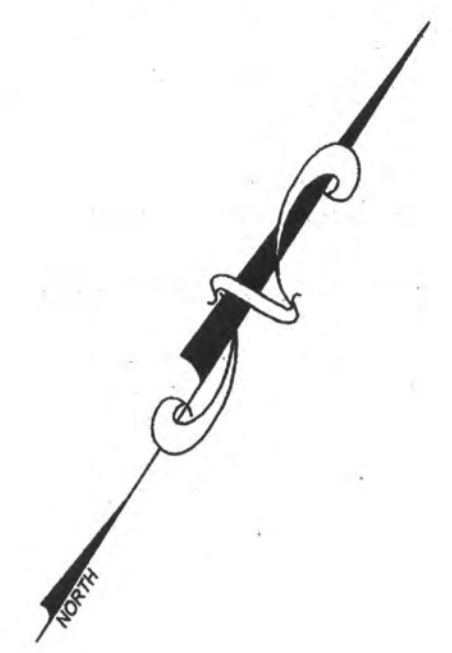


REVISIONS		
DATE	NAME	NO.

NOTE:
THIS SHEET HAS BEEN DRAWN USING COMPUTER AIDED DRAFTING/DESIGN
(CAD/D) AND COORDINATE GEOMETRY (COGO).

NEW JERSEY DEPARTMENT OF THE TREASURY
DIVISION OF TAXATION
APPROVED AS A TAX MAP PURSUANT TO THE AUTHORITY OF
N.J.S.A. 54:1-16 AND N.J.S.A. 54:1-17
FOR THE DIRECTOR, DIVISION OF TAXATION
Cheryl Miller, CTA
JULY 20, 2016
DATE: JUL 20 2016 SERIAL NO. 1070

TAX MAP
CITY OF VENTNOR
ATLANTIC COUNTY NEW JERSEY
SCALE: 1" = 50' DATE: 2-19-2015
CHARLES E. ADAMSON NJ PROFESSIONAL LAND SURVEYOR LIC. NO. 42827
24 GA 28048700
REMINGTON, VERNICK & WALBERG ENGINEERS
845 N. MAIN STREET, PLEASANTVILLE, NJ 08232
(609) 645-7100, FAX (609) 645-7076
WEB SITE ADDRESS: WWW.RVW.COM
TO SHOW CONDITIONS AS OF 7-20-2016

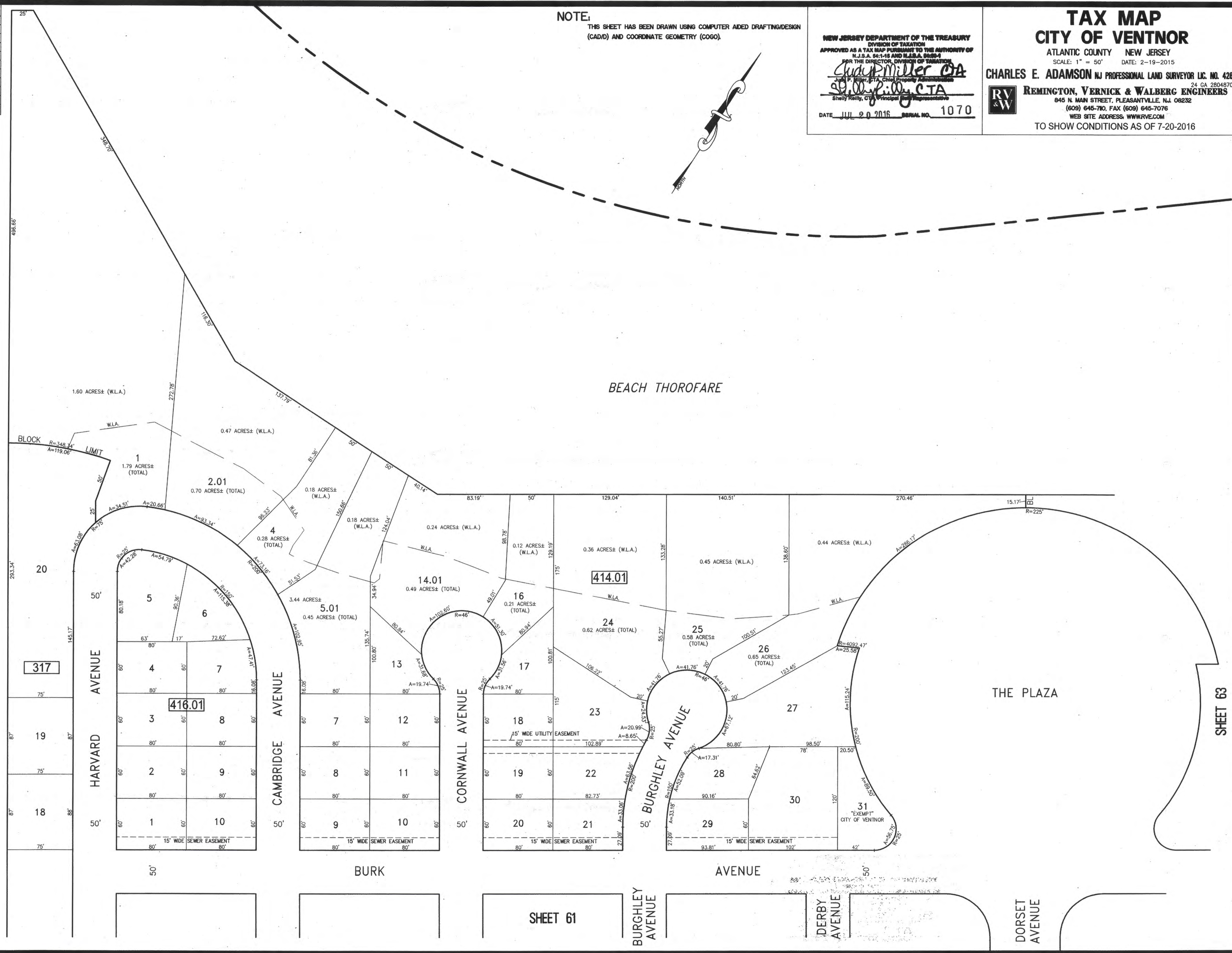


SHEET 49

WEST CANAL

BEACH THOROFARE

THE PLAZA



SHEET 61

SHEET 63