

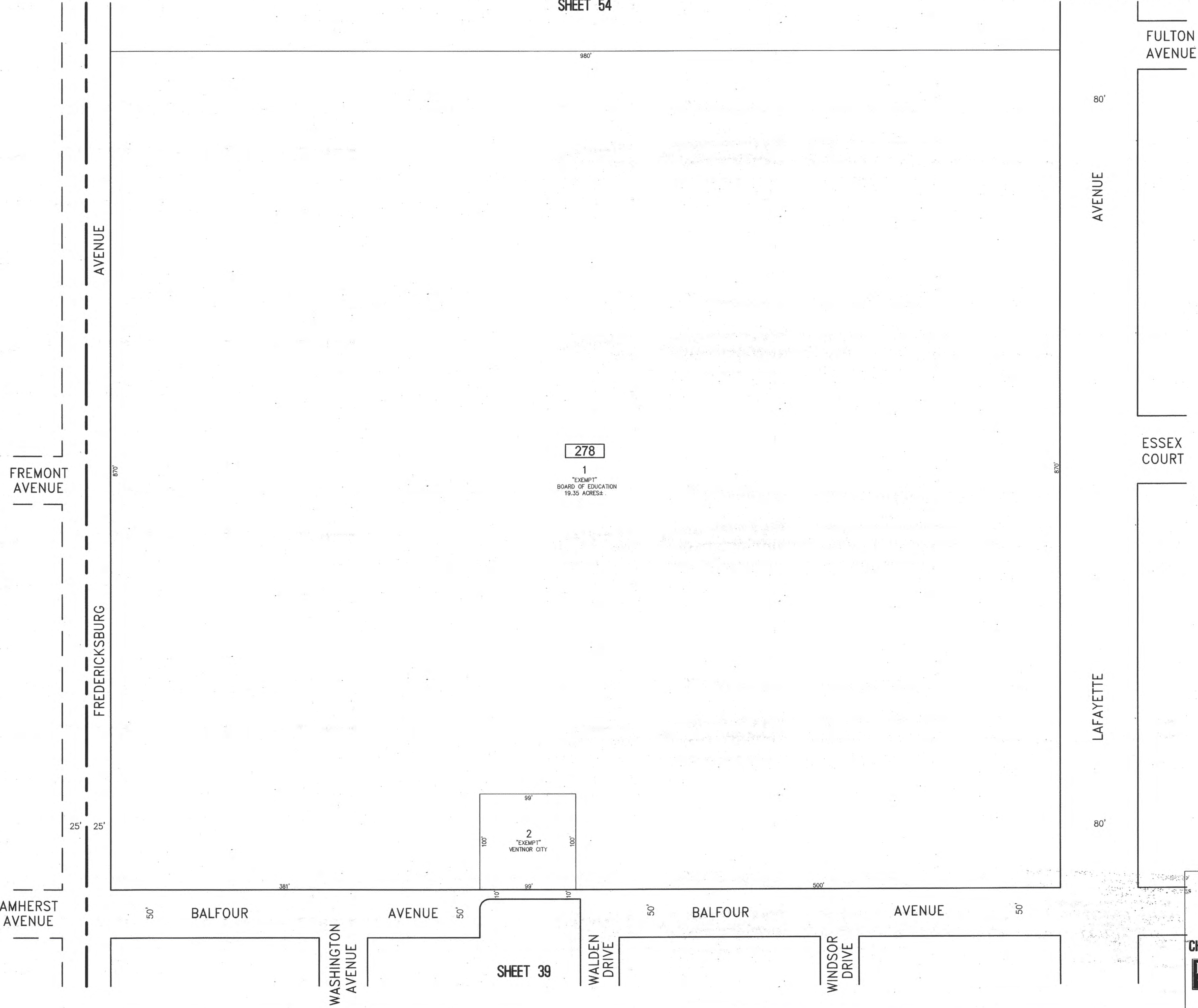
CITY OF MARGATE
COUNTY OF ATLANTIC

SHEET 54

NOTE:

THIS SHEET HAS BEEN DRAWN USING COMPUTER AIDED DRAFTING/DESIGN (CAD/D) AND COORDINATE GEOMETRY (COGO).

REVISIONS		
DATE	NAME	NO.



SHEET 44

NEW JERSEY DEPARTMENT OF THE TREASURY
DIVISION OF TAXATION
APPROVED AS A TAX MAP PURSUANT TO THE AUTHORITY OF
N.J.S.A. 54-1-16 AND N.J.S.A. 54-20-4
FOR THE DIRECTOR, DIVISION OF TAXATION
Charles Miller CTA
John P. Miller, P.E., Chief Property Administration
Shelly Kelly, CTA
Shelly Kelly, CTA, Principal Field Representative
DATE: JUL 20 2016 SERIAL NO. 1070

TAX MAP
CITY OF VENTNOR

ATLANTIC COUNTY NEW JERSEY
SCALE: 1" = 50' DATE: 2-19-2015

CHARLES E. ADAMSON NJ PROFESSIONAL LAND SURVEYOR LIC. NO. 42827
24 GA. 28048700
REMINGTON, VERNICK & WALBERG ENGINEERS
845 N. MAIN STREET, PLEASANTVILLE, N.J. 08232
(609) 645-780, FAX (609) 645-7076
WEB SITE ADDRESS: WWW.RVE.COM
TO SHOW CONDITIONS AS OF 7-20-2016