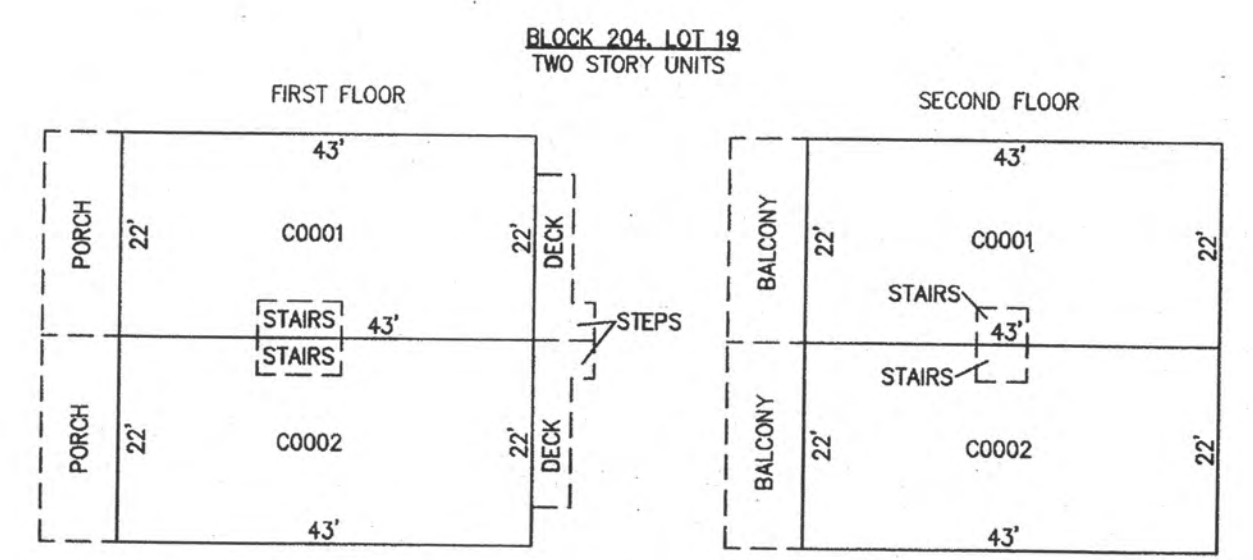
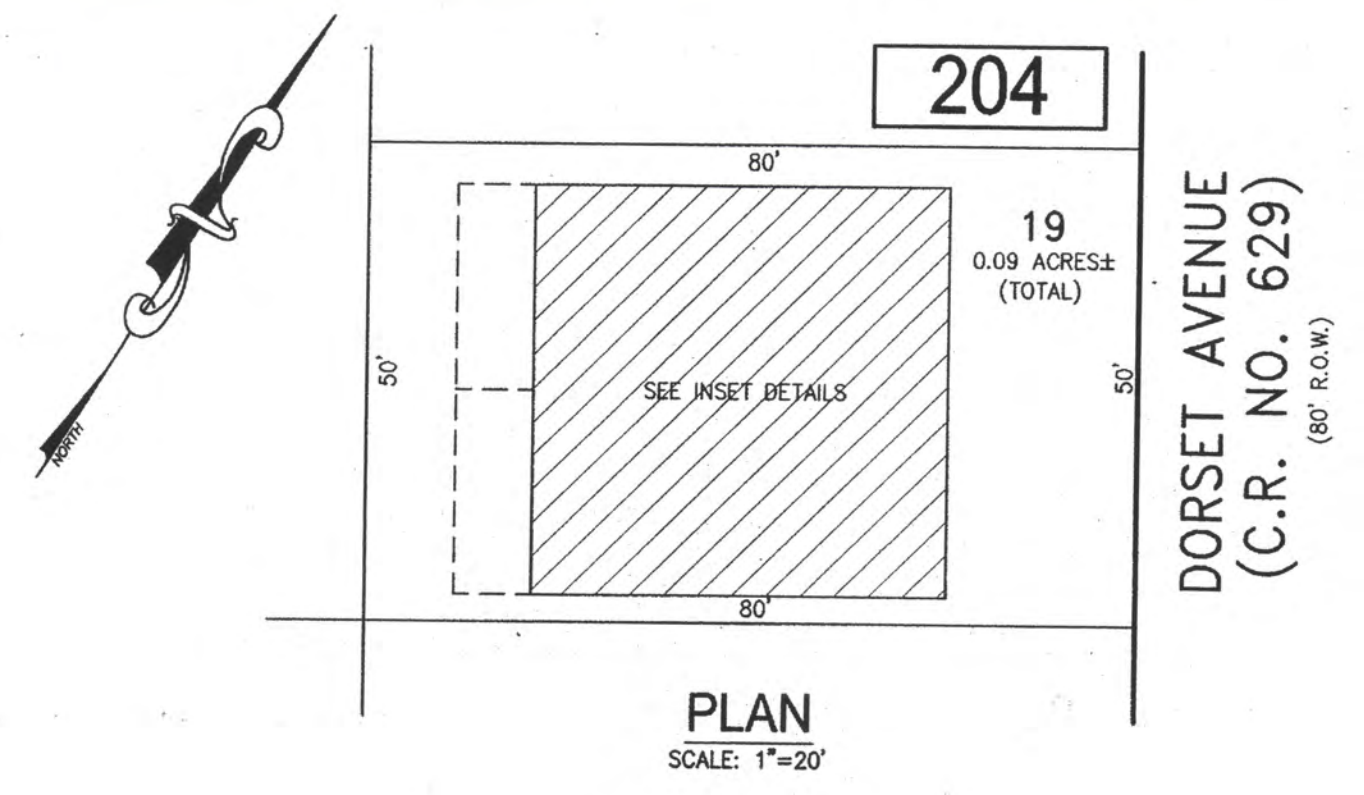


REVISIONS		
DATE	NAME	NO.

NOTE:
THIS SHEET HAS BEEN DRAWN USING COMPUTER AIDED DRAFTING/DESIGN (CADD) AND COORDINATE GEOMETRY (COGO).



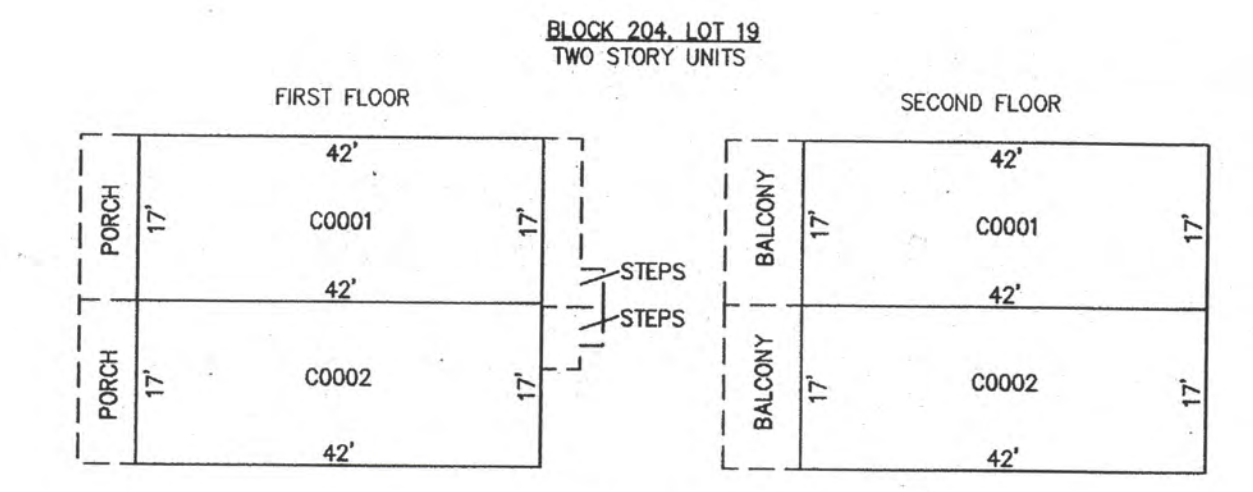
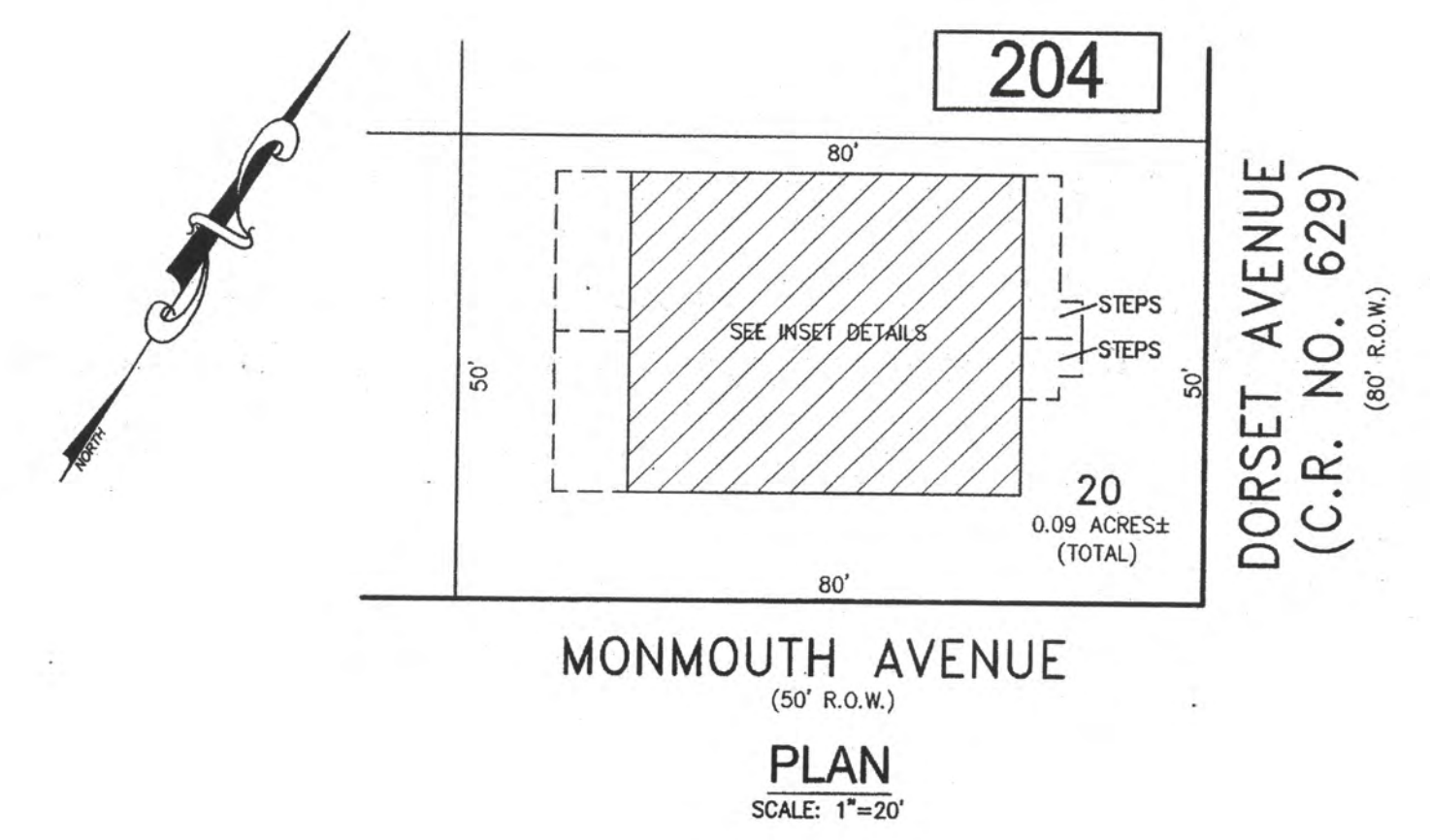
CONDO QUALIFIER	SQUARE FOOTAGE
C0001	1740 SF.
C0002	1740 SF.

PLAN
SCALE: 1"=20'

BLOCK 204, LOT 19
TWO STORY UNITS

DETAILS
SCALE: 1"=20'

BLOCK 204, LOT 19
202 N. DORSET AVENUE CONDOMINIUM



CONDO QUALIFIER	SQUARE FOOTAGE
C0001	1358 SF.
C0002	1358 SF.

PLAN
SCALE: 1"=20'

BLOCK 204, LOT 20
TWO STORY UNITS

DETAILS
SCALE: 1"=20'

BLOCK 204, LOT 20
200 N. DORSET AVENUE CONDOMINIUM

BLOCK 204, LOT 19
BLOCK 204, LOT 20
SEE SHEET 33

NEW JERSEY DEPARTMENT OF THE TREASURY
DIVISION OF TAXATION
APPROVED AS A TAX MAP PURSUANT TO THE AUTHORITY OF
N.J.S.A. 54:1-15 AND N.J.S.A. 54:56-1
SUPERVISOR, DIVISION OF TAXATION

Charles Miller CTA
Shelly Miller, City Principal and Representative

DATE: JUL 20 2016 SERIAL NO. 1070

TAX MAP
CITY OF VENTNOR
ATLANTIC COUNTY NEW JERSEY
SCALE: NOTED DATE: 2-19-2015

CHARLES E. ADAMSON NJ PROFESSIONAL LAND SURVEYOR LIC. NO. 42827
24 GA 28048700

REMINGTON, VERNICK & WALBERG ENGINEERS
845 N. MAIN STREET, PLEASANTVILLE, N.J. 08232
(609) 645-700, FAX (609) 645-7076
WEB SITE ADDRESS: WWW.RVE.COM

TO SHOW CONDITIONS AS OF 7-20-2016