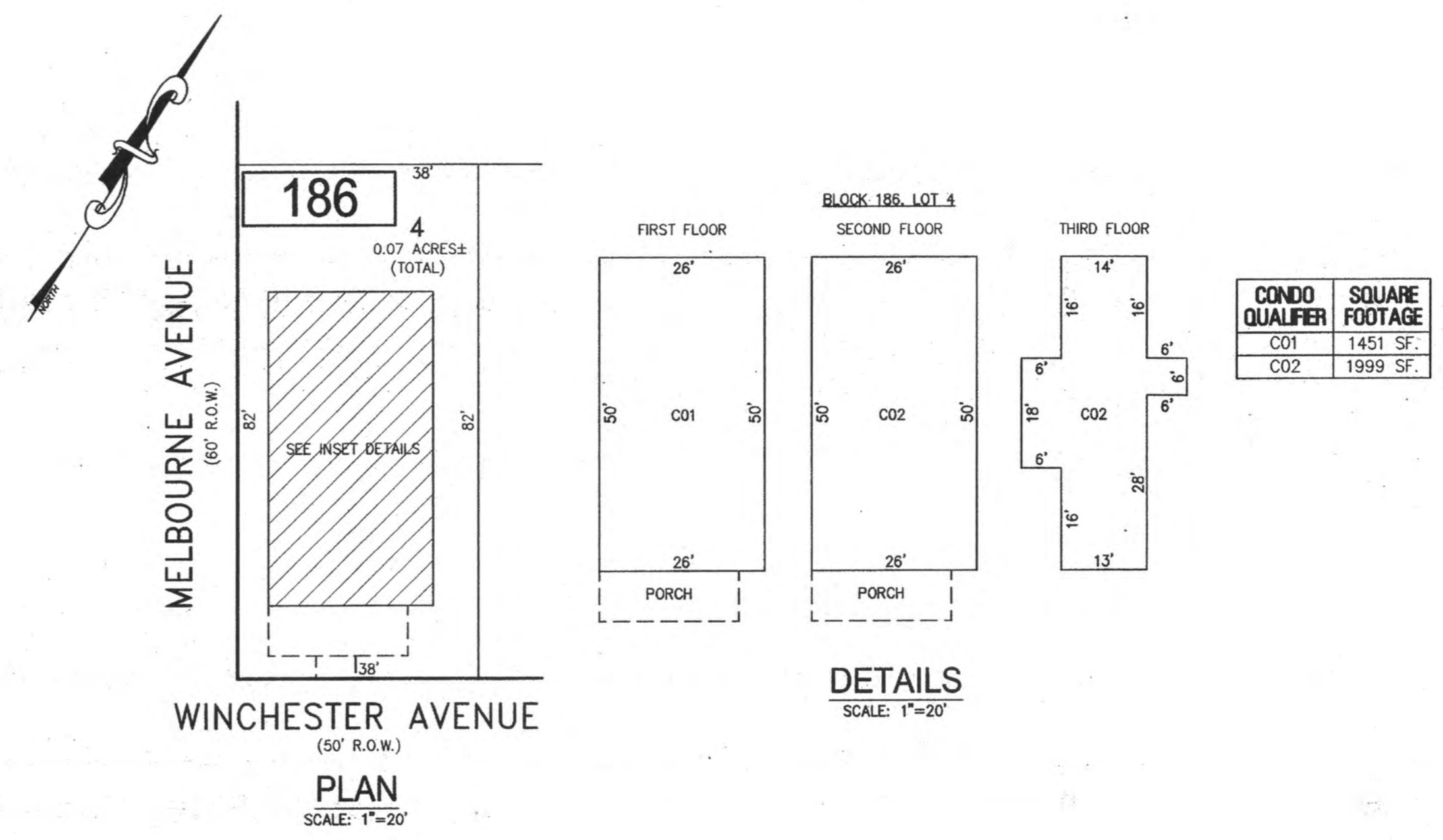
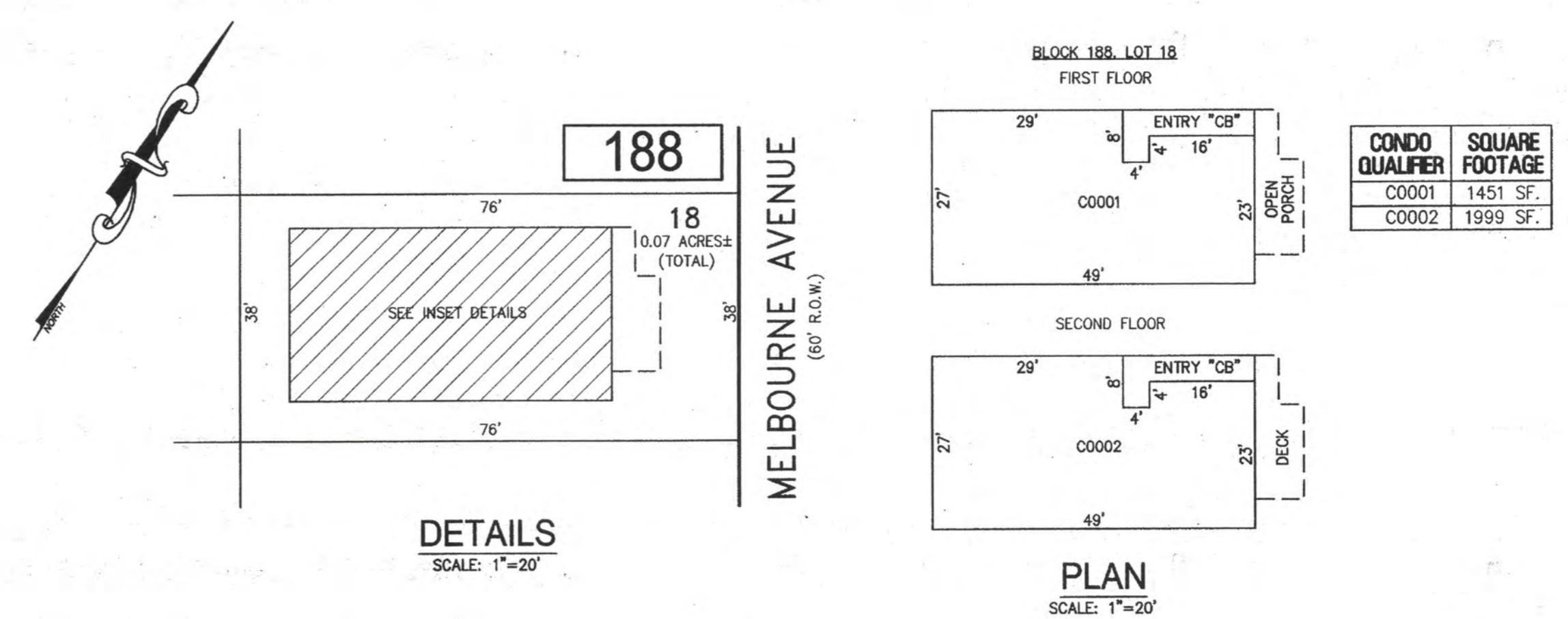


REVISIONS		
DATE	NAME	NO.

**NOTE:**  
THIS SHEET HAS BEEN DRAWN USING COMPUTER AIDED DRAFTING/DESIGN (CAD/D) AND COORDINATE GEOMETRY (COGO).



**BLOCK 186, LOT 4**  
**7107 WINCHESTER AVENUE CONDOMINIUM**



**BLOCK 188, LOT 18**  
**118 N. MELBOURNE AVENUE CONDOMINIUM**

BLOCK 186, LOT 4  
BLOCK 188, LOT 18  
SEE SHEET 31

NEW JERSEY DEPARTMENT OF THE TREASURY  
DIVISION OF TAXATION  
APPROVED AS A TAX MAP PURSUANT TO THE AUTHORITY OF  
R.J.S.A. 9:15-43 AND R.J.S.A. 9:15-44  
FOR THE DIRECTOR, DIVISION OF TAXATION  
*Judy Miller CTA*  
*Shelly Kelly, CTA*  
DATE **JUL 20 2016** SERIAL NO. **1070**

**TAX MAP**  
**CITY OF VENTNOR**  
ATLANTIC COUNTY NEW JERSEY  
SCALE: NOTED DATE: 2-19-2015  
**CHARLES E. ADAMSON** NJ PROFESSIONAL LAND SURVEYOR LIC. NO. 42627  
**REMINGTON, VERNICK & WALBERG ENGINEERS**  
845 N. MAIN STREET, PLEASANTVILLE, N.J. 08232  
(609) 645-7100, FAX (609) 645-7076  
WEB SITE ADDRESS: WWW.RVW.COM  
TO SHOW CONDITIONS AS OF 7-20-2016