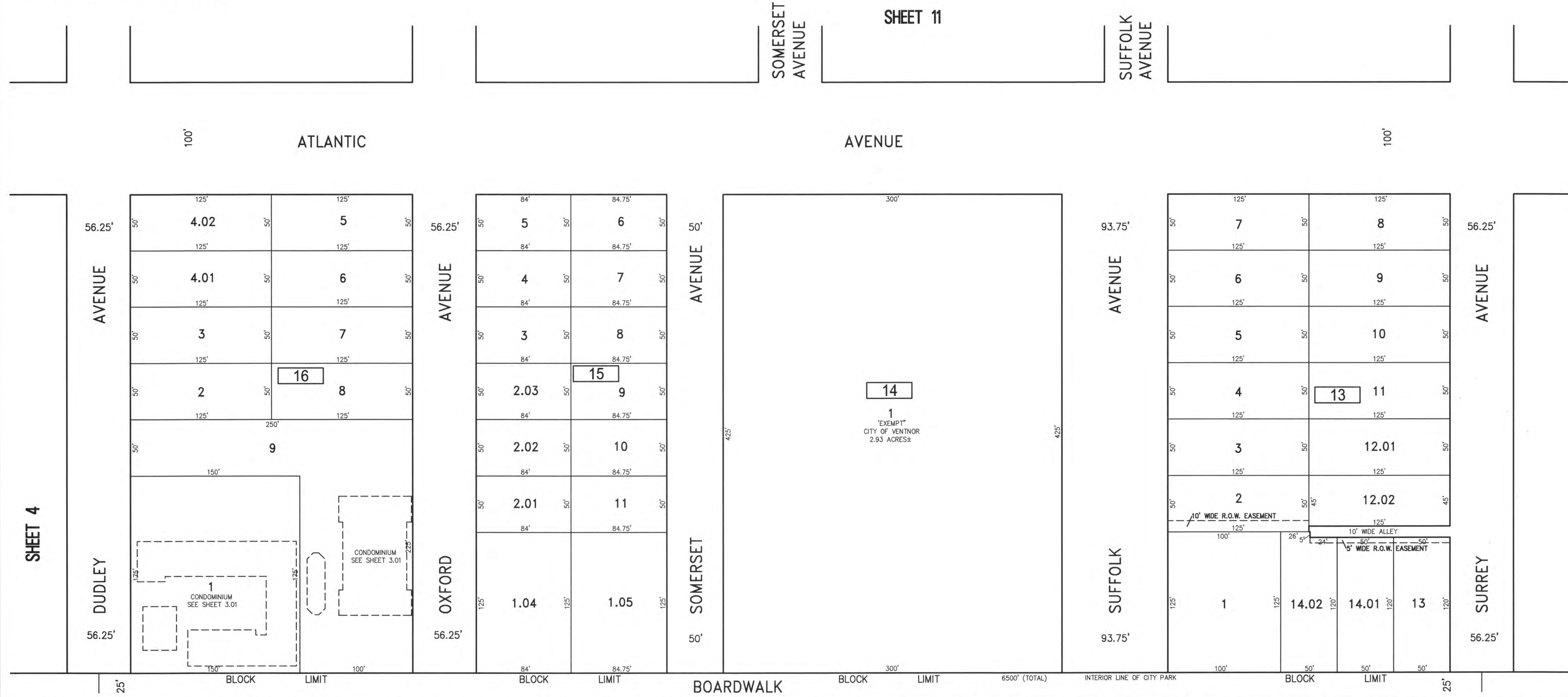


NOTE:

THIS SHEET HAS BEEN DRAWN USING COMPUTER AIDED DRAFTING/DESIGN (CADD) AND COORDINATE GEOMETRY (COGO).

| REVISIONS | | |
|-----------|--------------------|-------|
| DATE | NAME | NO. |
| 3-1-2017 | CHARLES E. ADAMSON | 42627 |
| | | |
| | | |
| | | |
| | | |
| | | |
| | | |
| | | |



SHEET 4

SHEET 2

LINE
MATCH

LINE
MATCH

500
1
"EXEMPT"
CITY OF VENTNOR
40.86 ACRES± (TOTAL)

1.01
"EXEMPT"
CITY OF VENTNOR
269.66 ACRES± (TOTAL)

"THIS TAX MAP SHEET HAS BEEN DIGITALLY REVISED USING COMPUTER-AIDED DRAFTING/DESIGN (CADD) & COORDINATE GEOMETRY (COGO). IT IS BASED ON THE ORIGINAL DIGITALLY DRAWN TAX MAP PLATE BEARING THE OFFICIAL NEW JERSEY DIVISION TAXATION APPROVAL STAMP WITH APPROVAL DATE JULY, 20, 2016. SERIAL NUMBER 1070 AND SIGNATURE OF JUDY P. MILLER, CTA, CHIEF PROPERTY ADMINISTRATION AND SHELLY REILLY, CTA, PRINCIPAL FIELD REPRESENTATIVE. THE ORIGINAL DIGITALLY DRAWN TAX MAP PLATE WITH THE OFFICIAL APPROVAL STAMP IS ON FILE WITH REMINGTON & VERNICK ENGINEERS."

TAX MAP
CITY OF VENTNOR
ATLANTIC COUNTY NEW JERSEY
SCALE: 1" = 50' DATE: 2-19-2015

CHARLES E. ADAMSON NJ PROFESSIONAL LAND SURVEYOR LIC. NO. 42627
24 GA. 28048700

REMINGTON, VERNICK & WALBERG ENGINEERS
845 N. MAIN STREET, PLEASANTVILLE, N.J. 08232
(609) 645-7100, FAX (609) 645-7076
WEB SITE ADDRESS: WWW.RVE.COM
TO SHOW CONDITIONS AS OF 3-1-2017

EXTERIOR LINE AS ESTABLISHED BY RIPARIAN COMMISSION (2000 FEET SOUTHEAST OF THE SOUTHEAST LINE OF ATLANTIC AVENUE)