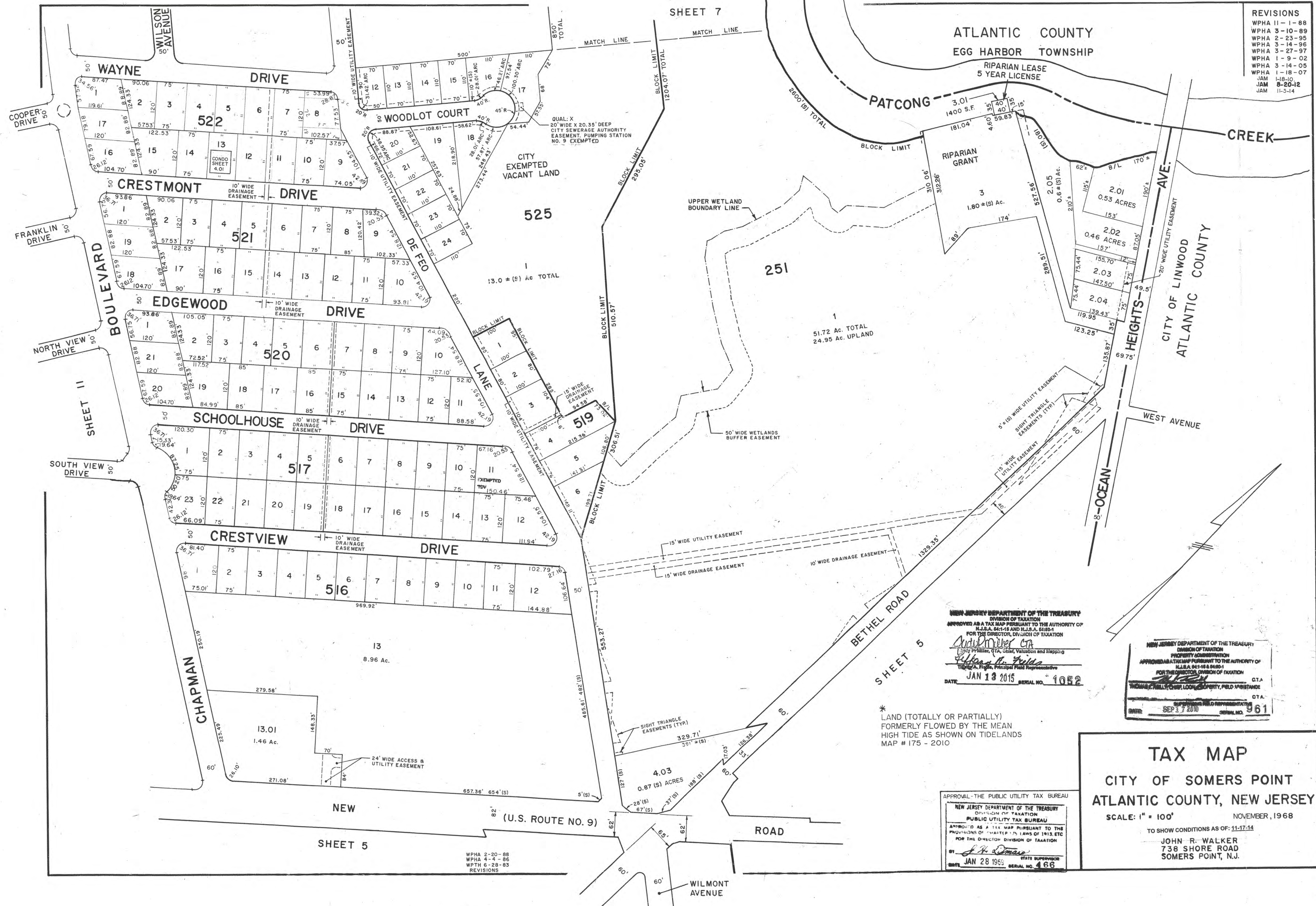


REVISIONS

WPHA 11-1-88
WPHA 3-10-89
WPHA 2-23-95
WPHA 3-14-96
WPHA 3-27-97
WPHA 1-9-02
WPHA 3-14-05
WPHA 1-18-07
JAM 1-18-10
JAM 8-20-12
JAM 11-5-14



NEW JERSEY DEPARTMENT OF THE TREASURY
 DIVISION OF TAXATION
 APPROVED AS A TAX MAP PURSUANT TO THE AUTHORITY OF
 N.J.S.A. 54:1-15 AND N.J.S.A. 54:1-16
 FOR THE DIRECTOR, DIVISION OF TAXATION
[Signature]
 DATE: JAN 13 2015 SERIAL NO. 1052

NEW JERSEY DEPARTMENT OF THE TREASURY
 DIVISION OF TAXATION
 PROPERTY APPRAISAL
 APPROVED AS A TAX MAP PURSUANT TO THE AUTHORITY OF
 N.J.S.A. 54:1-15 AND N.J.S.A. 54:1-16
 FOR THE DIRECTOR, DIVISION OF TAXATION
[Signature]
 DATE: SEP 17 2010 SERIAL NO. 961

* LAND (TOTALLY OR PARTIALLY)
 FORMERLY FLOWED BY THE MEAN
 HIGH TIDE AS SHOWN ON TIDELANDS
 MAP # 175 - 2010

APPROVAL - THE PUBLIC UTILITY TAX BUREAU
 NEW JERSEY DEPARTMENT OF THE TREASURY
 DIVISION OF TAXATION
 PUBLIC UTILITY TAX BUREAU
 APPROVED AS A TAX MAP PURSUANT TO THE
 PROVISIONS OF CHAPTER 175 LAWS OF 1913, ETC.
 FOR THE DIRECTOR, DIVISION OF TAXATION
[Signature]
 DATE: JAN 28 1965 SERIAL NO. 466

TAX MAP
 CITY OF SOMERS POINT
 ATLANTIC COUNTY, NEW JERSEY
 SCALE: 1" = 100'
 NOVEMBER, 1968
 TO SHOW CONDITIONS AS OF: 11-17-14
 JOHN R. WALKER
 738 SHORE ROAD
 SOMERS POINT, N.J.