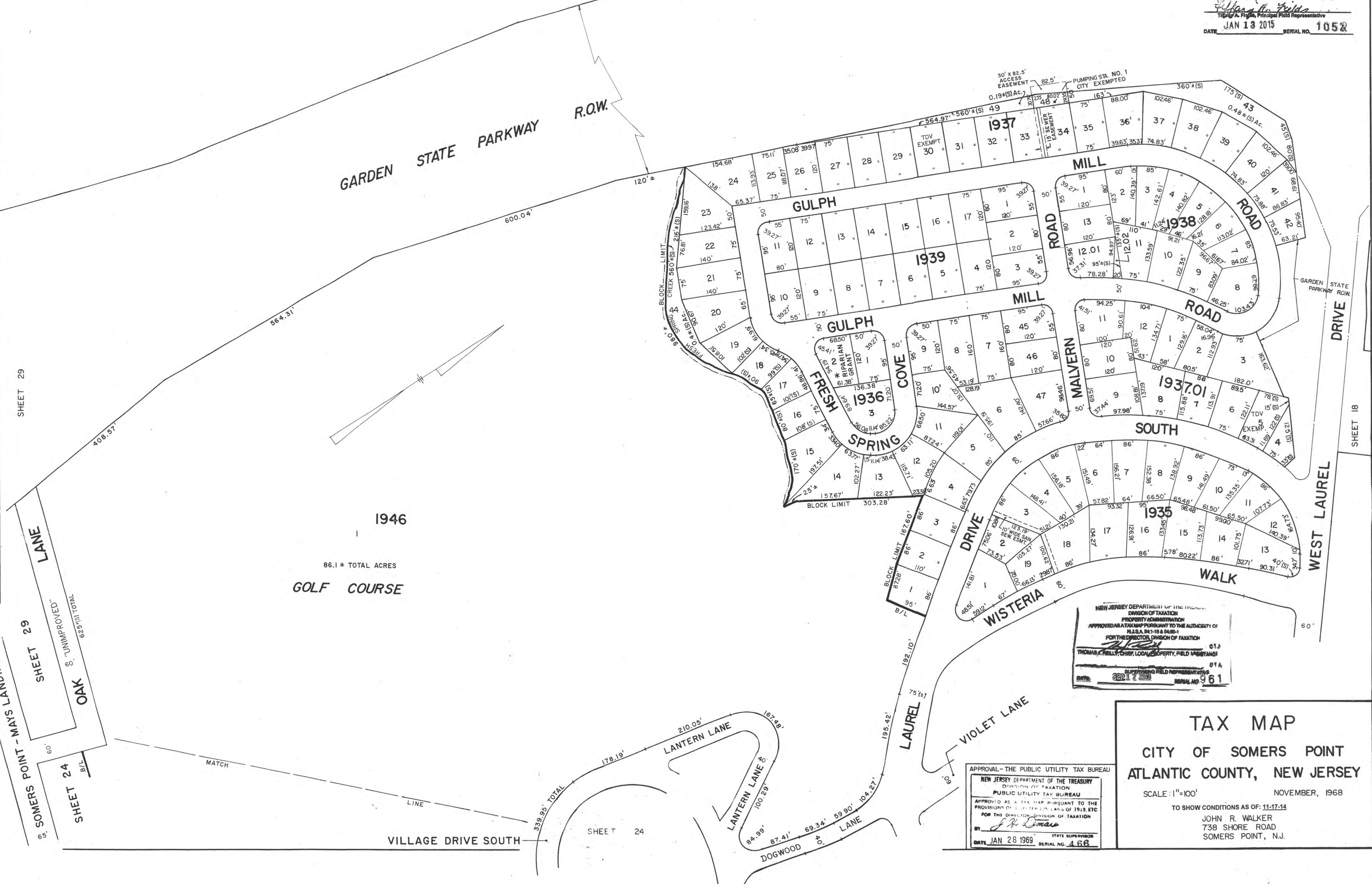


REVISIONS
 WPHA 3-2-86
 WPHA 4-8-93
 WPHA 12-7-99
 WPHA 5-24-00
 WPHA 6-27-00
 WPHA 3-14-05
 JAM 4-30-09
 JAM 1-18-10

* LAND (TOTALLY OR PARTIALLY)
 FORMERLY FLOWED BY THE MEAN
 HIGH TIDE AS SHOWN ON TIDELANDS
 MAP #175-2010

SHEET 26

NEW JERSEY DEPARTMENT OF THE TREASURY
 DIVISION OF TAXATION
 APPROVED AS A TAX MAP PURSUANT TO THE AUTHORITY OF
 N.J.S.A. 54:1-15 AND N.J.S.A. 54:1-16
 FOR THE DIRECTOR, DIVISION OF TAXATION
 Thomas R. Walker
 T.R. Walker, Principal Field Representative
 DATE JAN 13 2015 SERIAL NO. 1052



NEW JERSEY DEPARTMENT OF THE TREASURY
 DIVISION OF TAXATION
 PROPERTY REPRESENTATION
 APPROVED AS A TAX MAP PURSUANT TO THE AUTHORITY OF
 N.J.S.A. 54:1-15 & 54:1-16
 FOR THE DIRECTOR, DIVISION OF TAXATION
 Thomas R. Walker
 T.R. Walker, Chief Local Property Field Representative
 DATE: 5/21/00 SERIAL NO. 961

APPROVAL - THE PUBLIC UTILITY TAX BUREAU
 NEW JERSEY DEPARTMENT OF THE TREASURY
 DIVISION OF TAXATION
 PUBLIC UTILITY TAX BUREAU
 APPROVED AS A TAX MAP PURSUANT TO THE
 PROVISIONS OF THE TAX MAP ACT OF 1913, ETC.
 FOR THE DIRECTOR, DIVISION OF TAXATION
 J.R. Lomas
 STATE SUPERVISOR
 DATE: JAN 28 1969 SERIAL NO. 466

TAX MAP
 CITY OF SOMERS POINT
 ATLANTIC COUNTY, NEW JERSEY
 SCALE: 1"=100' NOVEMBER, 1968
 TO SHOW CONDITIONS AS OF: 11-17-14
 JOHN R. WALKER
 738 SHORE ROAD
 SOMERS POINT, N.J.