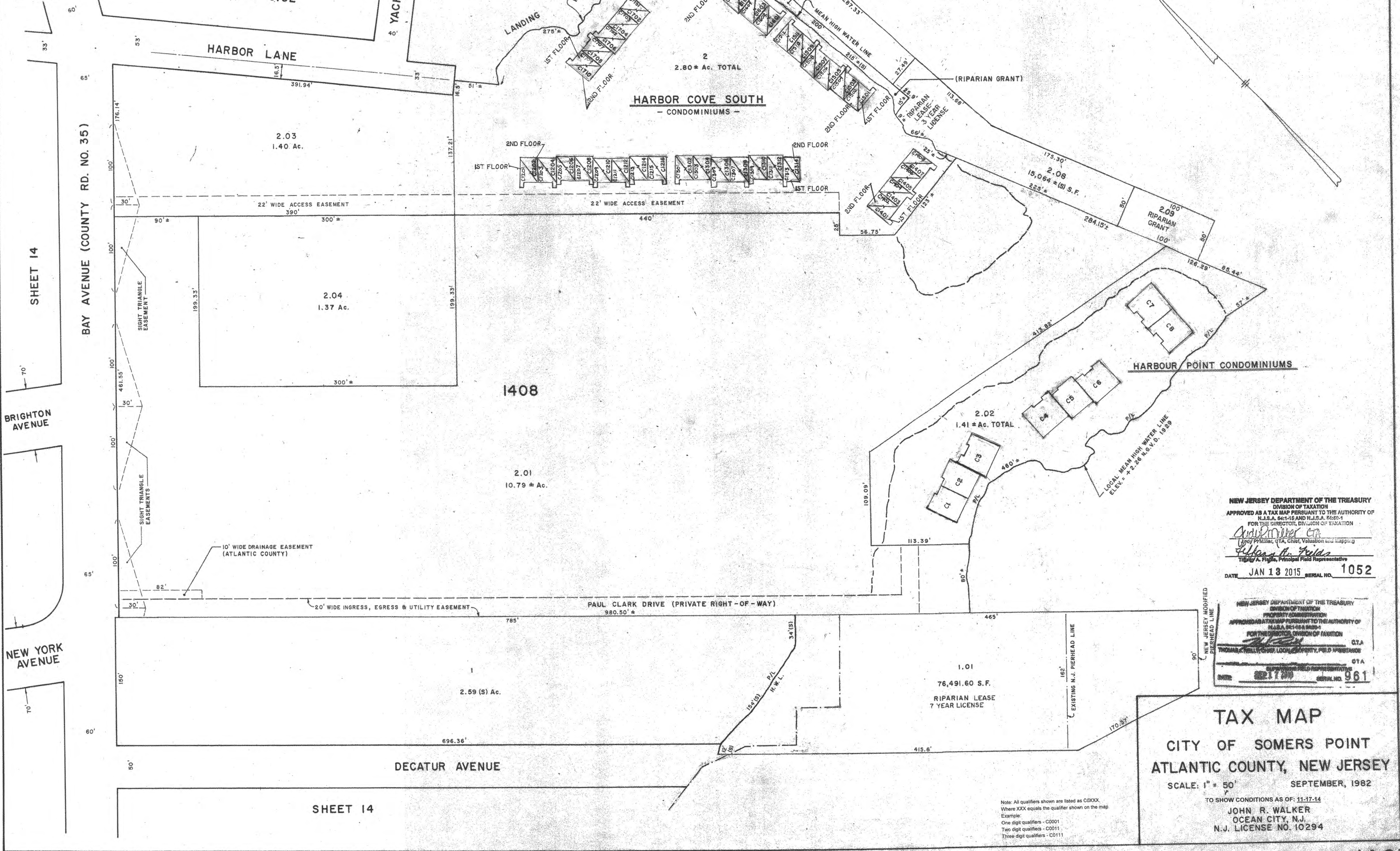


- REVISIONS**
- WPHA 6-6-86
  - WPHA 9-22-87
  - WPHA 1-14-88
  - WPHA 8-29-89
  - WPHA 7-10-90
  - WPHA 3-15-96
  - WPHA 12-31-98
  - WPHA 1-10-02
  - WPHA 3-14-05
  - JAM 4-28-09
  - JAM 9-10-10
  - JAM 10-17-12



NEW JERSEY DEPARTMENT OF THE TREASURY  
 DIVISION OF TAXATION  
 APPROVED AS A TAX MAP PURSUANT TO THE AUTHORITY OF  
 N.J.S.A. 84:1-16 AND N.J.S.A. 84:20-1  
 FOR THE DIRECTOR, DIVISION OF TAXATION  
*John Miller, CTA*  
 Chief, Valuation and Mapping  
*William H. Fields*  
 Tilden A. Fields, Principal Field Representative  
 DATE JAN 13 2015 SERIAL NO. 1052

NEW JERSEY DEPARTMENT OF THE TREASURY  
 DIVISION OF TAXATION  
 PROPERTY ADMINISTRATION  
 APPROVED AS A TAX MAP PURSUANT TO THE AUTHORITY OF  
 N.J.S.A. 84:1-16 AND N.J.S.A. 84:20-1  
 FOR THE DIRECTOR, DIVISION OF TAXATION  
*John Miller, CTA*  
 Chief, Valuation and Mapping  
*William H. Fields*  
 Tilden A. Fields, Principal Field Representative  
 DATE 02/17/10 SERIAL NO. 961

**TAX MAP**  
 CITY OF SOMERS POINT  
 ATLANTIC COUNTY, NEW JERSEY  
 SCALE: 1" = 50'  
 SEPTEMBER, 1982  
 TO SHOW CONDITIONS AS OF: 11-17-14  
 JOHN R. WALKER  
 OCEAN CITY, N.J.  
 N.J. LICENSE NO. 10294

Note: All qualifiers shown are listed as C0000.  
 Where XXX equals the qualifier shown on the map.  
 Example:  
 One digit qualifiers - C0001  
 Two digit qualifiers - C0011  
 Three digit qualifiers - C0111