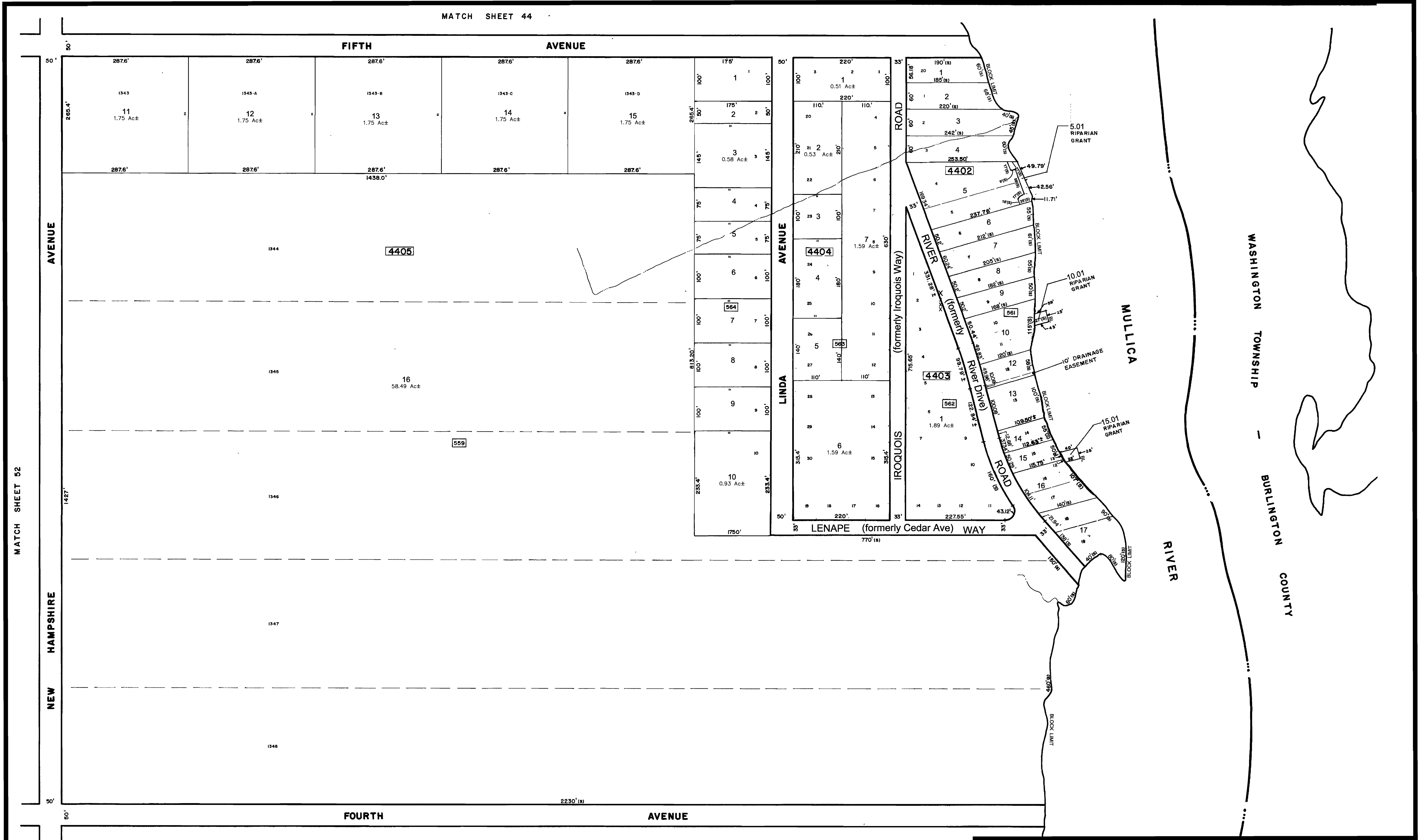
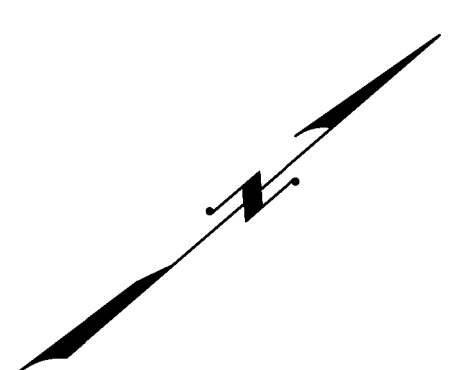


MATCH SHEET 44



MATCH SHEET 52

REVISIONS				
DATE	BY	LIC.NO	BLOCK	LOT
1/1992	R.V.			
9/2008	DORAN ENG.			
02/2017	ED CLAY	34842	Asst. Road	Names Changes



MATCH SHEET 44

THIS MAP WAS FORMALLY CERTIFIED BY THE DIVISION OF TAXATION ON MARCH 14, 1984, SIGNED BY IVAN HAFTKOWITZ AND ASSIGNED SERIAL NUMBER 630

TAX MAP
TOWNSHIP OF MULLICA
 ATLANTIC COUNTY
 SCALE: 1" = 100'
 NEW JERSEY
 DATE: NOVEMBER 1983
CHRIS R. REHMANN
 PROFESSIONAL ENGINEER LAND SURVEYOR
 NEW JERSEY LICENSE NO. 17119
 850 SO. WHITE HORSE PIKE
 HAMMONTON, NEW JERSEY 08037
 CO#P 24GA27973300
 TO SHOW CONDITIONS AS OF FEBRUARY 1, 2017

THIS M-P IS A SCANNED COPY OF THE ORIGINAL MAP PREPARED BY CHRIS R. REHMANN DATED 1983. THE ORIGINAL APPROVED MAP IS ON FILE IN THE ENGINEERS OFFICE.