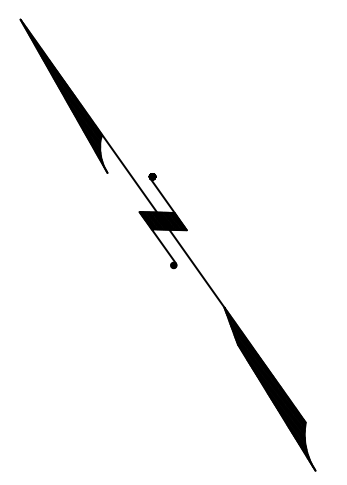
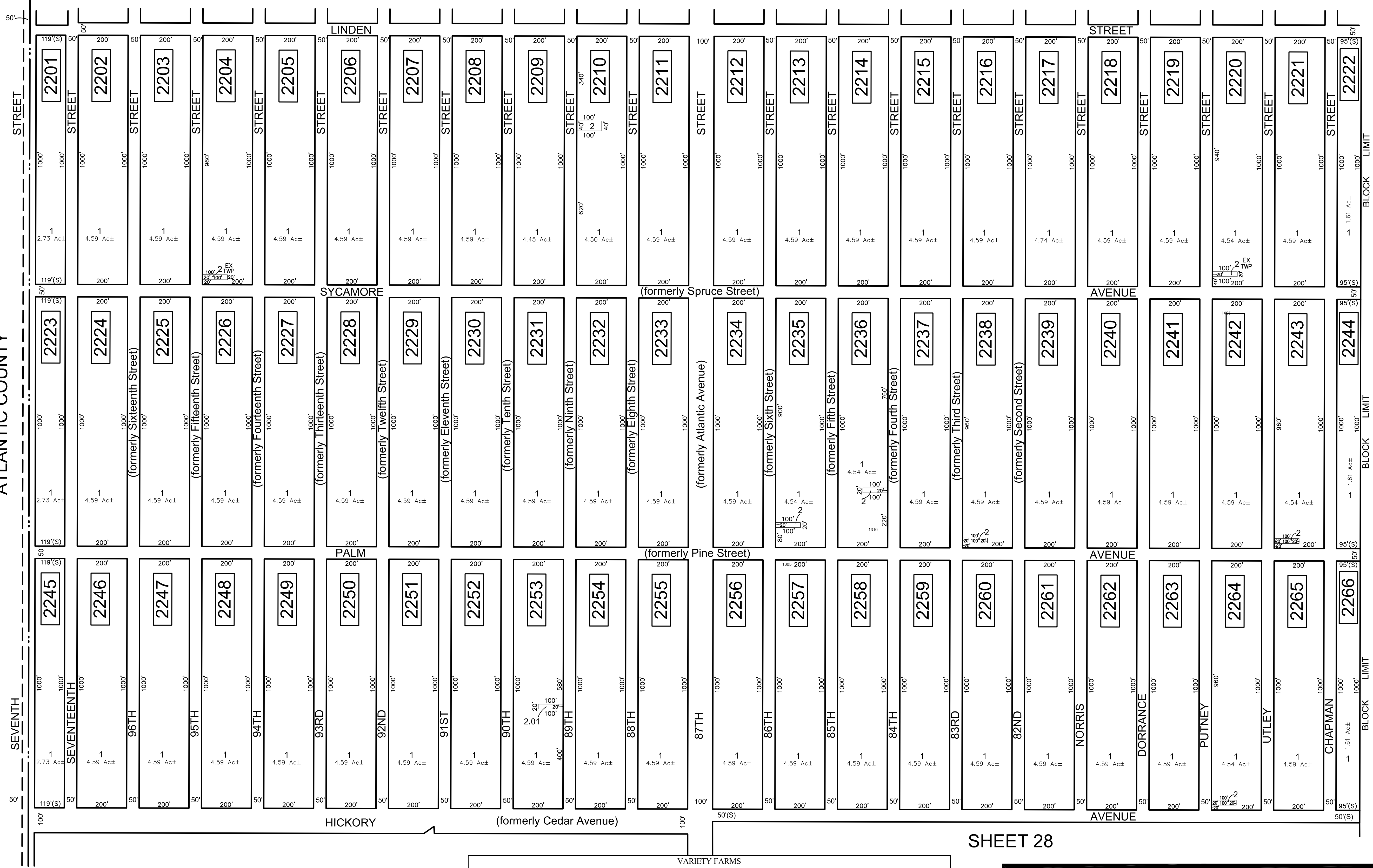


SHEET 21



TOWN OF HAMMONTON  
ATLANTIC COUNTY



SHEET 23

SHEET 28

SHEET 27

\* THIS SHEET HAS BEEN DRAWN USING COMPUTER AIDED DRAFTING/  
DESIGN (CAD/D) AND COORDINATE GEOMETRY (COGO).

REVISIONS				
DATE	BY	LIC. NO.	BLOCK	LOT
02/2017	ED CLAY	34842	Asst. Road	Names Changes

VARIETY FARMS Block 2003 Lot 1 with additional lots:											
Block #	Lot #	Block #	Lot #	Block #	Lot #	Block #	Lot #	Block #	Lot #	Block #	Lot #
2201	1	2212	1	2223	1	2234	1	2246	1	2257	1
2202	1	2213	1	2224	1	2236	1	2247	1	2258	1
2203	1	2214	1	2225	1	2237	1	2248	1	2259	1
2204	1	2215	1	2226	1	2238	1	2249	1	2260	1
2205	1	2216	1	2227	1	2239	1	2250	1	2261	1
2206	1	2217	1	2228	1	2240	1	2251	1	2262	1
2207	1	2218	1	2229	1	2241	1	2252	1	2263	1
2208	1	2219	1	2230	1	2242	1	2253	1	2264	1.2
2209	1	2220	1	2231	1	2243	1	2254	1	2265	1
2210	1.2	2221	1	2232	1	2244	1	2255	1	2266	1
2211	1	2222	1	2233	1	2245	1	2256	1		

THIS MAP HAS BEEN GIVEN A  
FORMAL CERTIFICATION BY THE  
DIVISION OF TAXATION ON  
JUNE 8, 2017, SIGNED BY  
JUDITH MILLER, CTA AND SHELLY  
REILLY, CTA ASSIGNED SERIAL  
NUMBER 630

**TAX MAP  
TOWNSHIP OF MULLICA**

ATLANTIC COUNTY  
SCALE: 1" = 200'

NEW JERSEY  
DATE: JANUARY 2017

**ED CLAY**  
PROFESSIONAL LAND SURVEYOR  
NEW JERSEY LICENSE NO. 34842  
850 SO. WHITE HORSE PIKE  
HAMMONTON, NEW JERSEY 08037  
COA# 246A2797300

TO SHOW CONDITIONS AS OF FEBRUARY 1, 2017