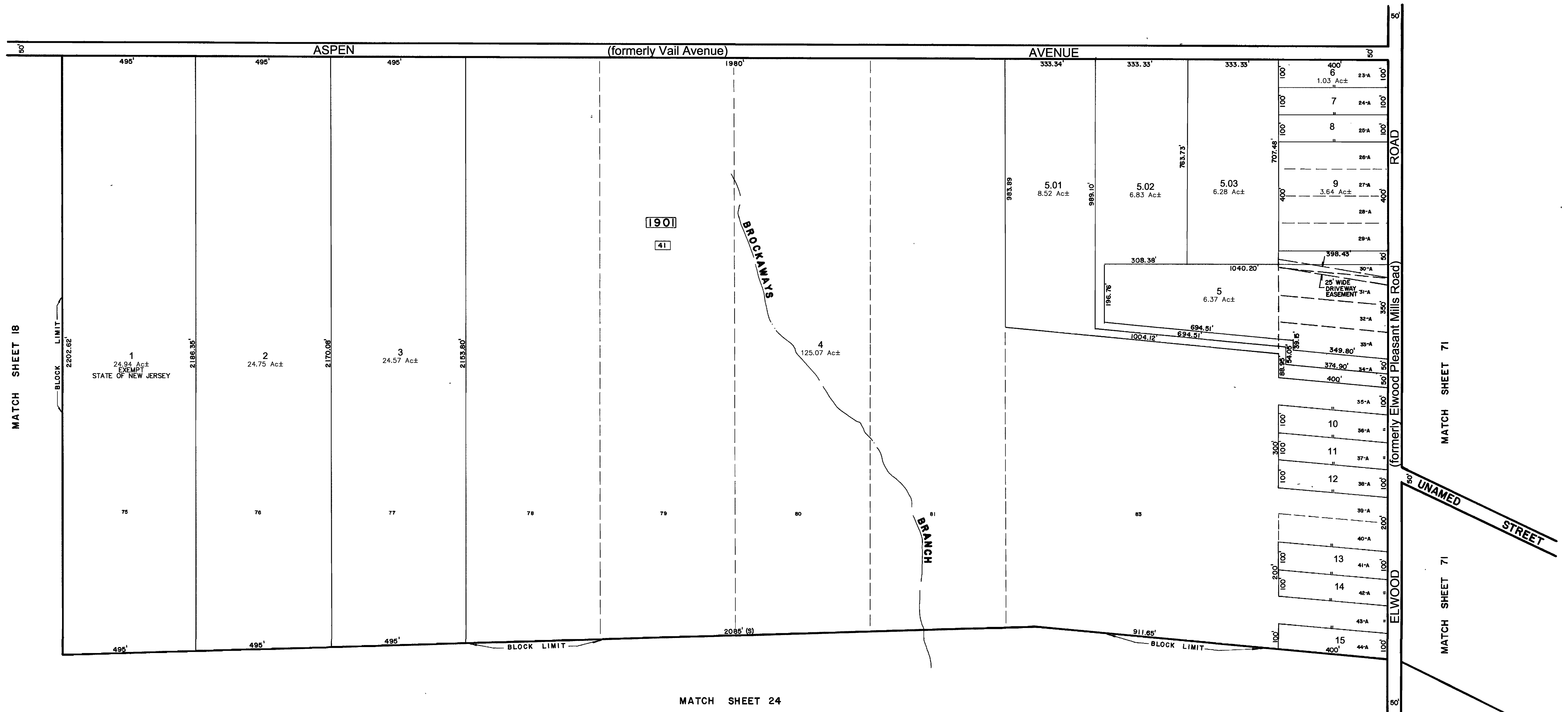
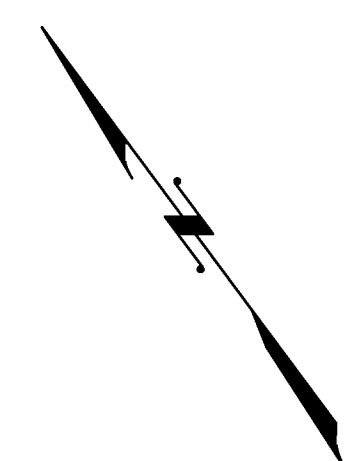


MATCH SHEET 14



MATCH SHEET 18

MATCH SHEET 71

MATCH SHEET 71

MATCH SHEET 24

* THIS MAP IS A SCANNED COPY OF THE ORIGINAL MAP PREPARED BY CHRIS R. REHMANN DATED 1983. THE ORIGINAL APPROVED MAP IS ON FILE IN THE ENGINEERS' OFFICE.

REVISIONS				
DATE	BY	LIC. NO.	BLOCK	LOT
1/1998	AQUA TERRA	1901		5
02/2017	ED CLAY	34842	Asst. Road	Names Changes

THIS MAP WAS FORMALLY
 CERTIFIED BY THE
 DIVISION OF TAXATION ON
 MARCH 14, 1984, SIGNED
 BY IVAN HAFTKOWITZ AND
 ASSIGNED SERIAL NUMBER 630

**TAX MAP
 TOWNSHIP OF MULLICA**

ATLANTIC COUNTY
 SCALE: 1" = 200'

NEW JERSEY
 DATE: NOVEMBER 1983

CHRIS R. REHMANN

PROFESSIONAL ENGINEER LAND SURVEYOR
 NEW JERSEY LICENSE NO. 17119
 850 SO. WHITE HORSE PIKE
 HAMMONTON, NEW JERSEY 08037
 CO.# 24GA27973300

TO SHOW CONDITIONS AS OF FEBRUARY 1, 2017