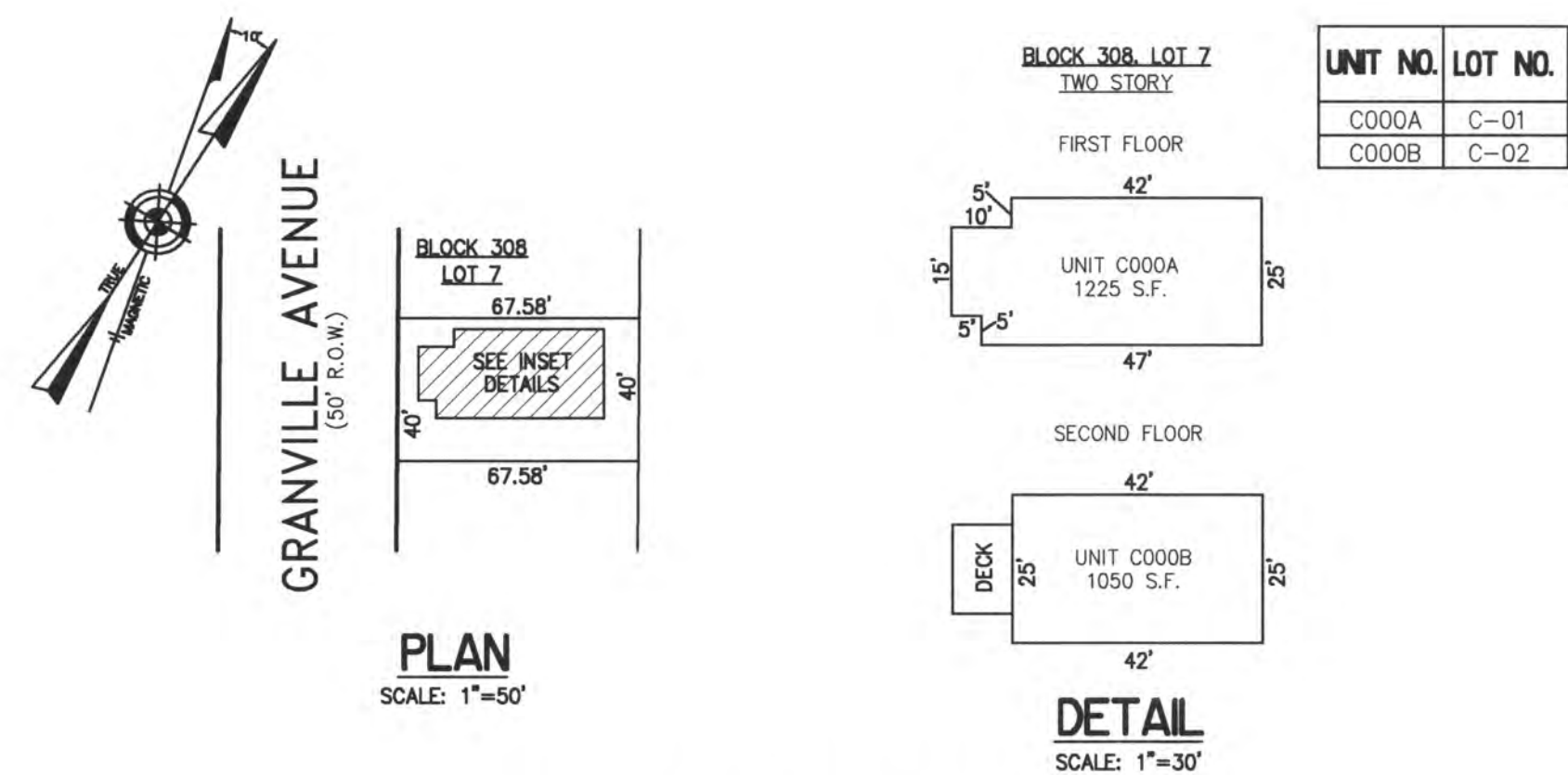
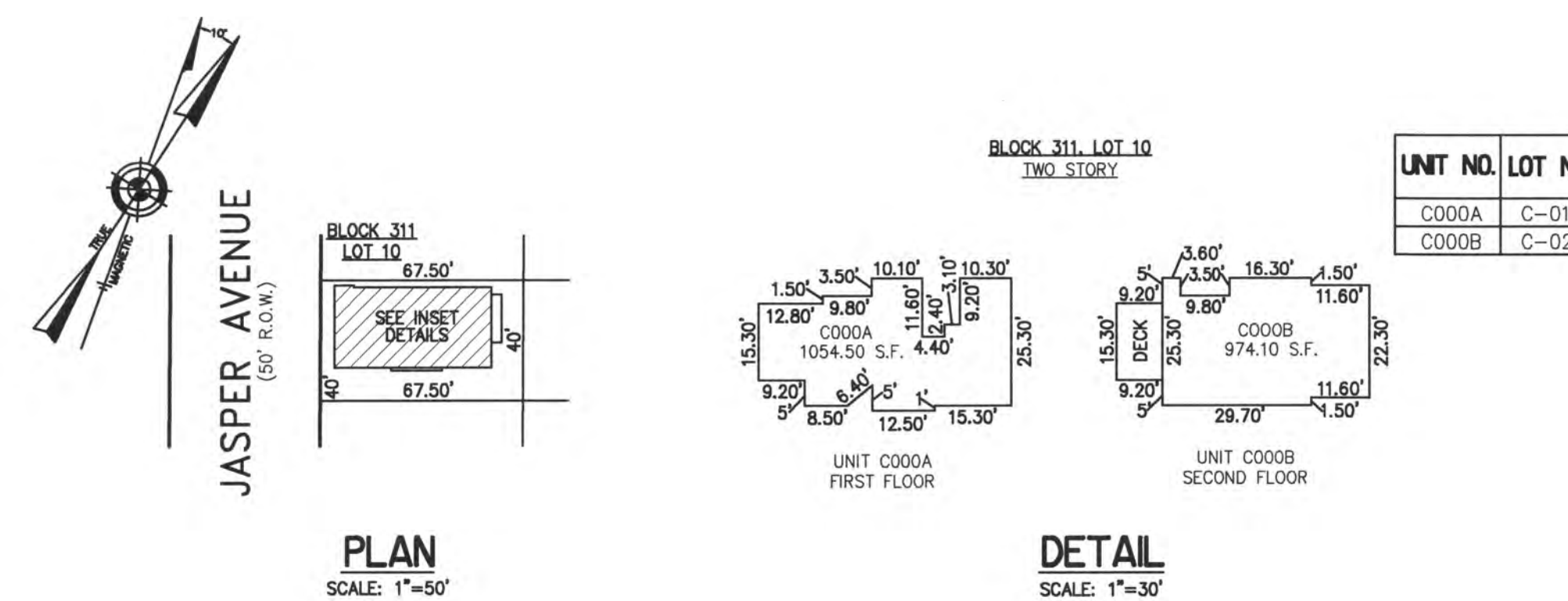


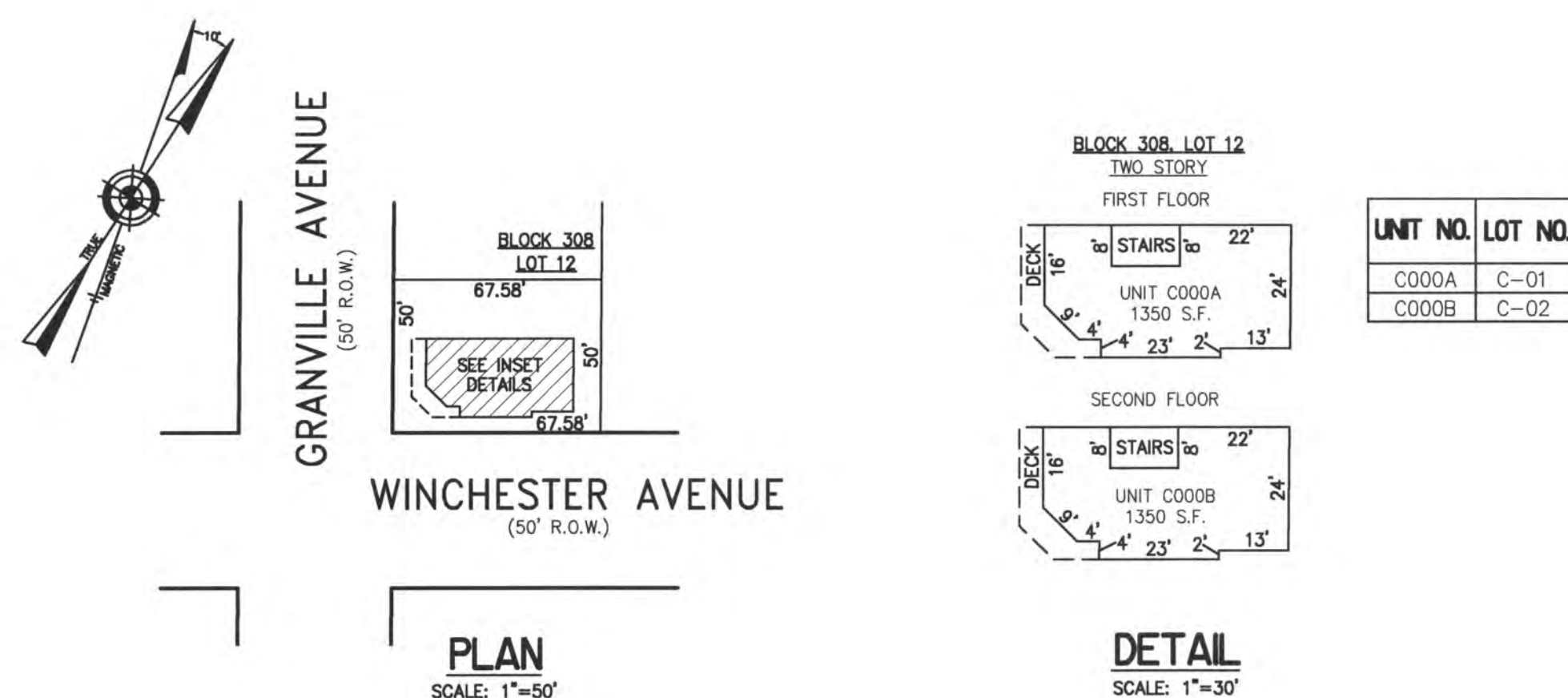
REVISIONS		
4-13-2007	CRAIG F. REMINGTON	23924
8-31-2008	CRAIG F. REMINGTON	23924
1-30-2017	CHARLES E. ADAMSON	42827



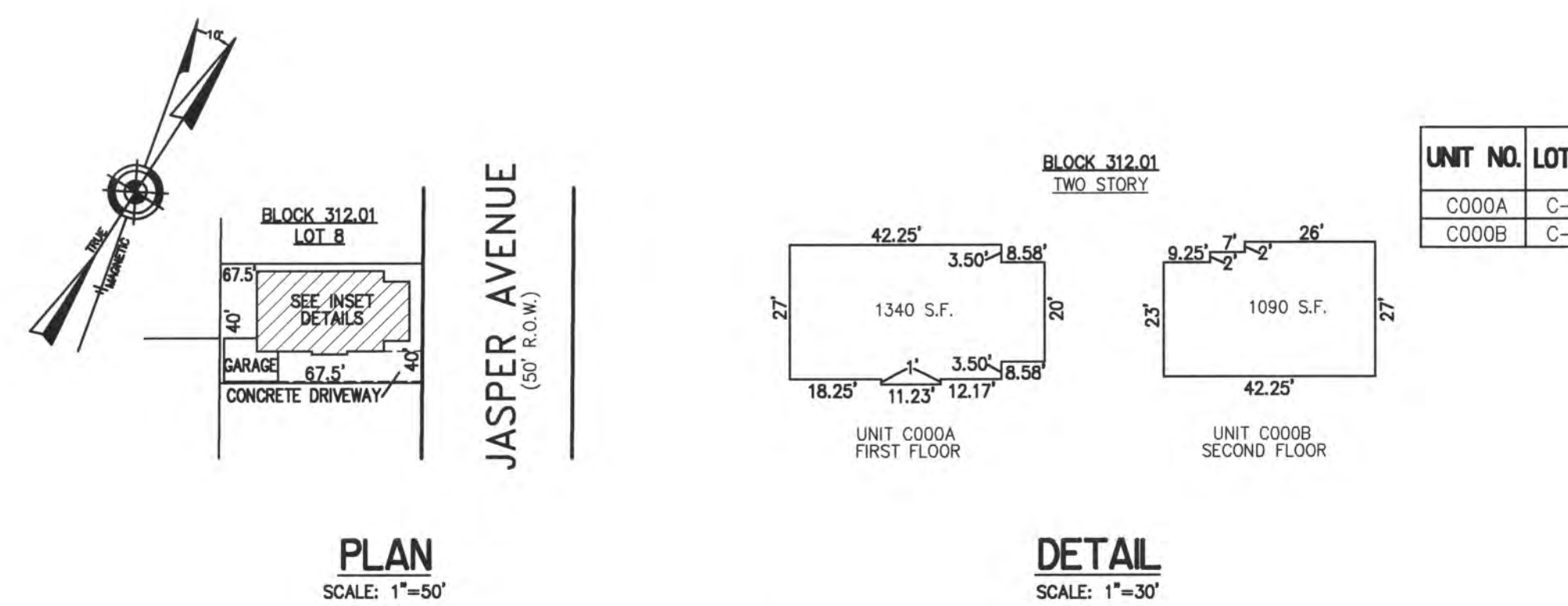
**BLOCK 308, LOT 7**  
 111 NORTH GRANVILLE CONDOMINIUM  
 111 NORTH GRANVILLE AVENUE  
 INSET "A"



**BLOCK 311, LOT 10**  
 105 NORTH JASPER CONDOMINIUM  
 105 NORTH JASPER AVENUE  
 INSET "C"



**BLOCK 308, LOT 12**  
 8015-17 WINCHESTER AVENUE CONDOMINIUM  
 8015-17 WINCHESTER AVENUE  
 INSET "B"



**BLOCK 312.01, LOT 8**  
 108 NORTH JASPER CONDOMINIUM  
 108 NORTH JASPER AVENUE  
 INSET "D"

CONDOMINIUM DETAILS AND DIMENSIONS  
 BLOCK 308, LOT 7  
 BLOCK 308, LOT 12  
 BLOCK 311, LOT 10  
 BLOCK 312.01, LOT 8  
 SEE PLATE 7

"THIS TAX MAP PLATE HAS BEEN DIGITALLY DRAWN USING COMPUTER-AIDED DRAFTING/DESIGN (CADD) & COORDINATE GEOMETRY (COGO). IT IS BASED ON THE ORIGINAL DIGITALLY DRAWN TAX MAP PLATE BEARING THE OFFICIAL NEW JERSEY DIVISION TAXATION APPROVAL STAMP WITH APPROVAL DATE 6-3-2005 SERIAL NUMBER 846 AND SIGNATURES OF SIGNERS' THOMAS J. REILLY, CHIEF, LOCAL PROPERTY, FIELD ASSISTANCE. SANTO C. DIDONATO, SUPERVISING FIELD REPRESENTATIVE. THE ORIGINAL DIGITALLY DRAWN TAX MAP PLATE WITH THE OFFICIAL APPROVAL STAMP IS ON FILE WITH REMINGTON, VERNICK & WALBERG ENGINEERS."

**TAX MAP**  
**CITY OF MARGATE**

ATLANTIC COUNTY NEW JERSEY  
 SCALE: 1" = 100' DATE: 11-01-2003

CRAIG F. REMINGTON LAND SURVEYOR LIC. NO. 23924



24 GA 28048700  
**REMINGTON, VERNICK & WALBERG ENGINEERS**  
 846 N. MAIN STREET, PLEASANTVILLE, N.J. 08232  
 (609) 645-7100, FAX (609) 645-7076  
 WEB SITE ADDRESS: WWW.RVW.COM